



Toshiba Satellite Radius P55W-B5220 RAM Replacement

This guide will explain how to replace the RAM on the Toshiba Satellite Radius P55W-B5220.

Written By: Devin Boski



INTRODUCTION

RAM (Random Access Memory) is hardware that temporarily stores data that allows the computer to access data faster. This guide will instruct you on how to replace your RAM.




TOOLS:

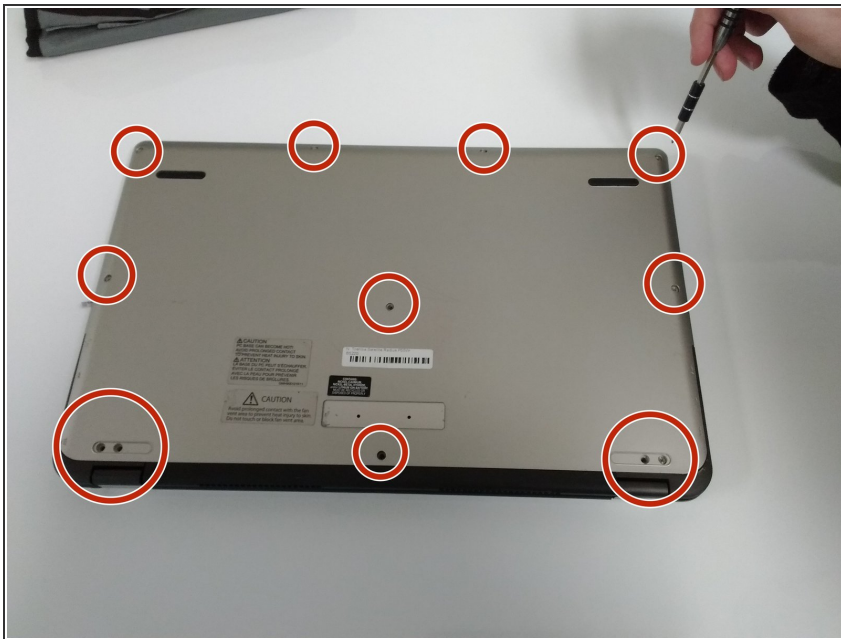
- [iFixit Opening Tools](#) (1)
 - [Phillips #0 Screwdriver](#) (1)
-

Step 1 — Back Cover



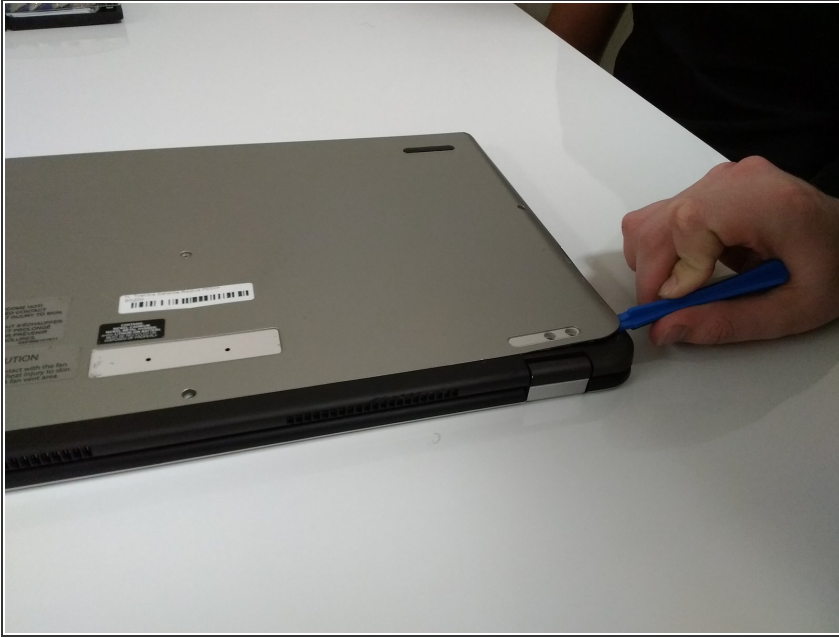
-  Turn off the laptop before starting.
- Remove the two rubber feet closest to the hinge with a plastic opening tool.

Step 2



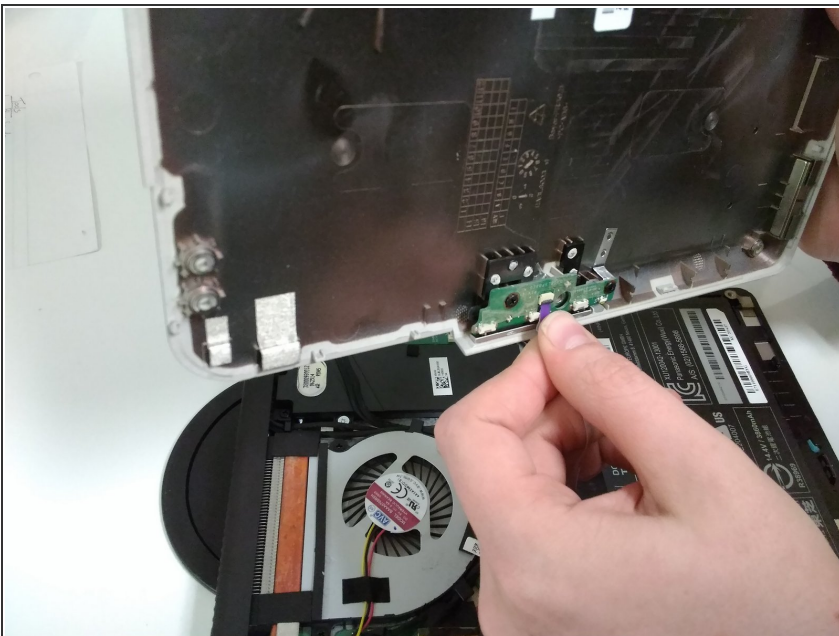
- Remove the twelve M2x4mm PH0 Philips head screws.

Step 3



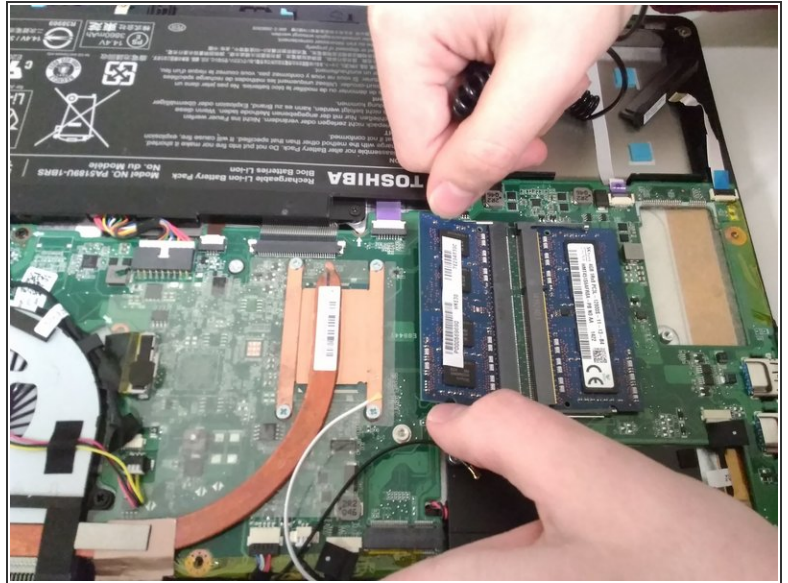
- Loosen the back cover with a plastic opening tool.
- ⓘ The least damaging way to pry the cover is to start from a corner and run the spudger along the edge.
- ⚠ Do not crack or bend the cover.

Step 4



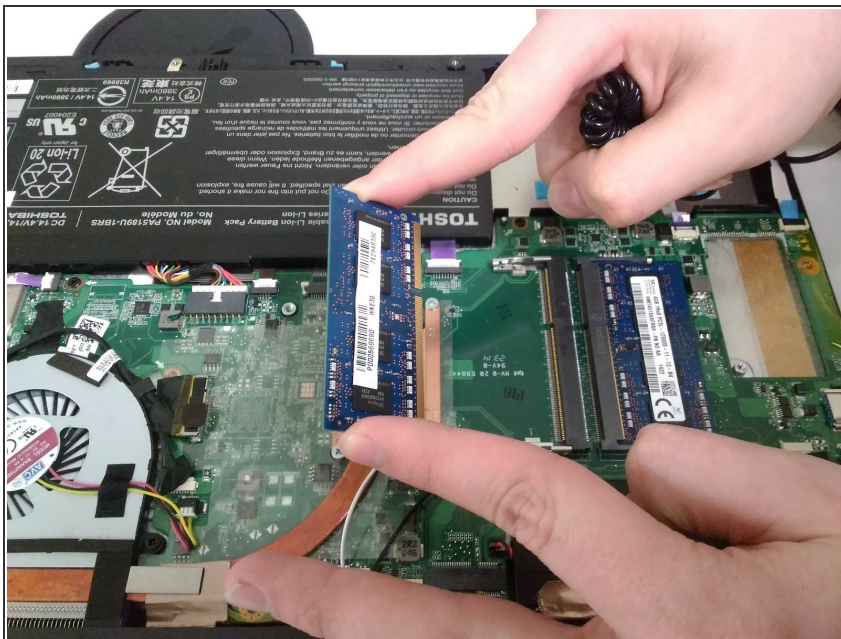
- Carefully lift open the cover.
- Remove the attached purple ribbon cable underneath the cover.
- ⚠ Do not rip the ribbon cable.

Step 5 — RAM



- Push outward on the clamps holding the RAM in place.

Step 6



- Remove the RAM chips.

To reassemble your device, follow these instructions in reverse order.