



# Toshiba Satellite L15W-B1320 Hard Drive Replacement

This guide will show you how to replace the hard drive in a Toshiba Satellite L15W-B1320.

Written By: Elizabeth Zapata



---

## INTRODUCTION

The hard drive may need replacement due to a variety of reasons such as malfunction, overuse, etc. This guide will demonstrate how to find, and remove the laptop's hard drive in order for replacement.

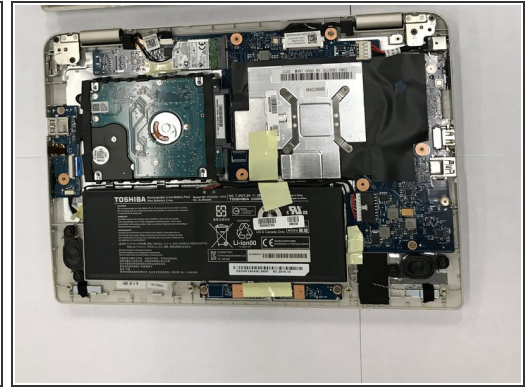
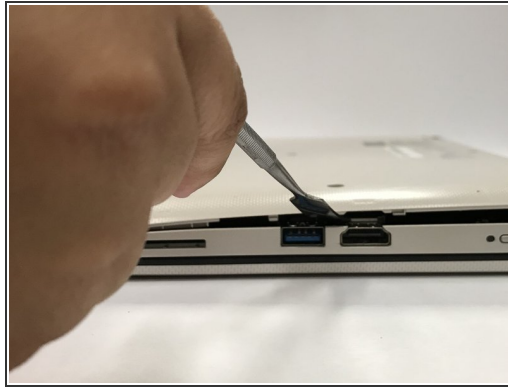
---



### TOOLS:

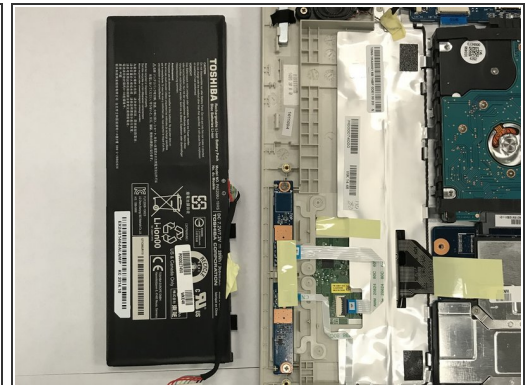
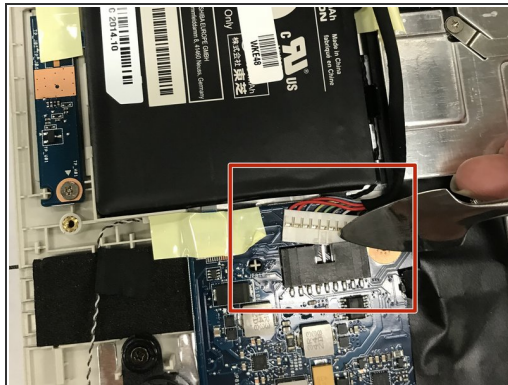
- [JIS #0 Screwdriver](#) (1)
  - [iFixit Opening Tools](#) (1)
-

## Step 1 — Battery



- Close the laptop and flip it over so that the base is facing upward.
- Using the JIS #0 screwdriver tip unscrew all 10, M2X4 size screws holding down the lid.
- Using a spudger pry the bottom lid of the laptop from the rest of the laptop.

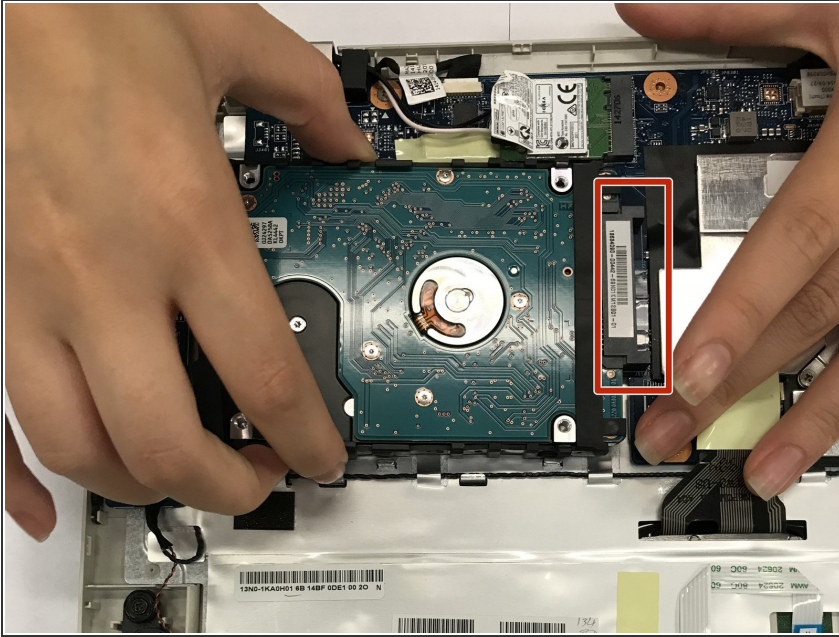
## Step 2



- Remove the yellow tape that connects the battery to the rest of the laptop by simply pulling it off.
- Disconnect the indicated cable from the cable connector by gently pulling on it.
- Lift up the battery carefully.

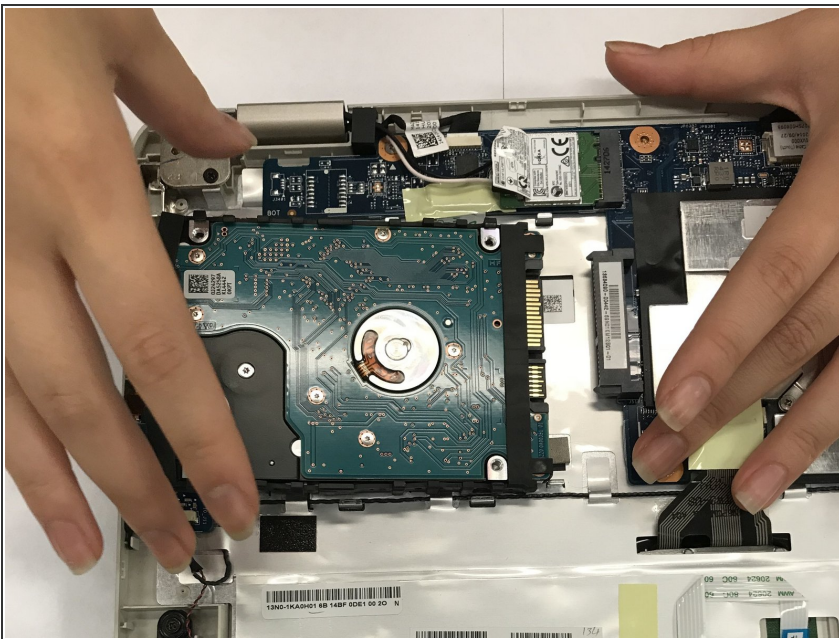


## Step 3 — Hard Drive



- The hard drive is connected at the end of the white barcode.
- To remove, first pull up on the end of the hard drive opposite of the barcode.

## Step 4



- After pulling up on the hard drive, pull in the opposite of the direction of the white barcode.

To reassemble your device, follow these instructions in reverse order.