



# Retro-Bit Retro Duo Cartridge Doors Replacement

Retro-Bit Retro Duo Game Console Cartridge Door Replacement.

Written By: Truong Vo



---

## INTRODUCTION

How to replace the console's cartridge doors. These cover the cartridge slots and hold games in place.



### TOOLS:

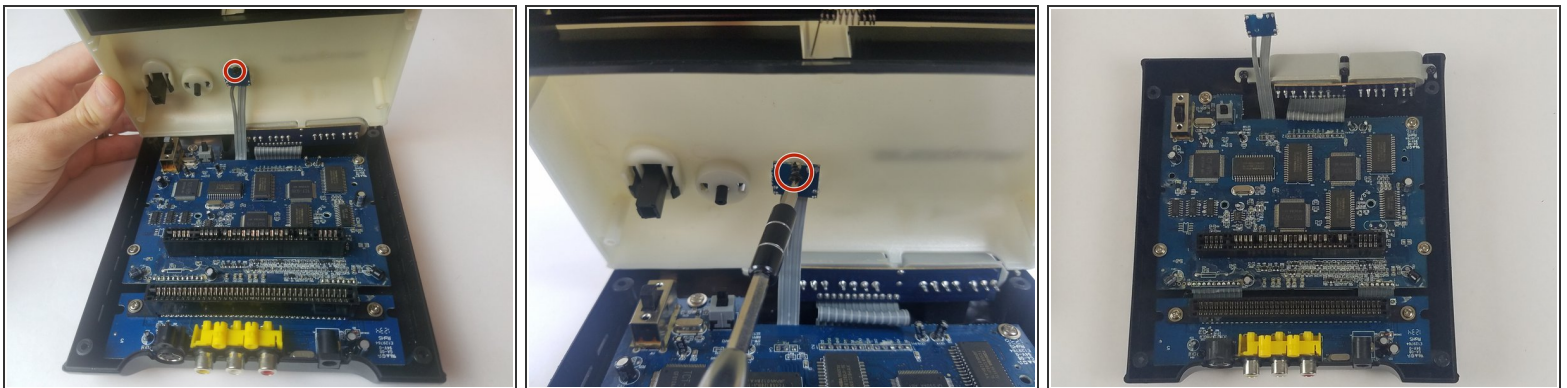
- [Phillips #0 Screwdriver](#) (1)
  - [Phillips #2 Screwdriver](#) (1)
  - [Phillips #00 Screwdriver](#) (1)
-

## Step 1 — Cartridge Doors



- With the console on its top. Remove the four 12 mm Phillips #2 screws.
  - ⓘ There may be a sticker covering one or more of the screws. Remove it before the screws.
- Flip the console on its feet, pinch near the AV/S ports, and carefully lift the top casing.
- ⚠ Do not completely remove the top casing. There is a small LED circuit board connected to the main circuit board.

## Step 2



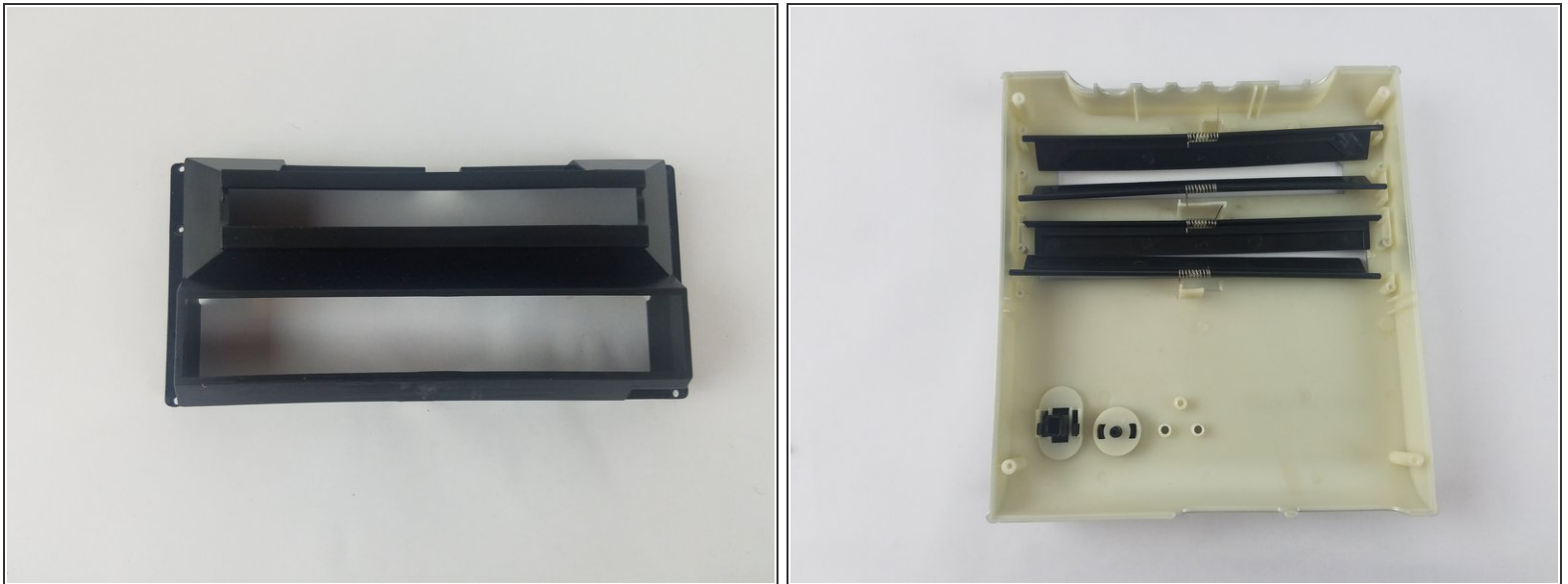
- Remove the one 6 mm Phillips #0 screw.
- Lift the top case and set aside.

### Step 3



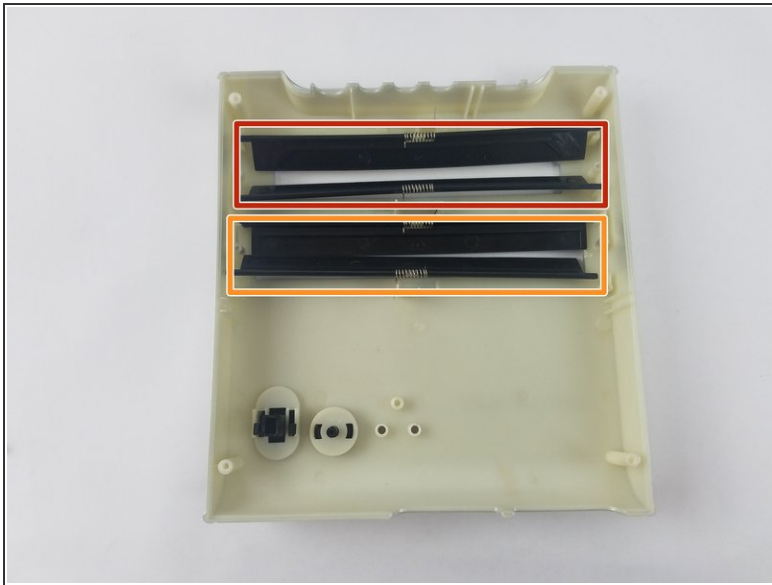
- Remove the eight 10 mm Phillips #0 screws.
- ⓘ The cartridge doors are spring-loaded and may pop up.

### Step 4



- Carefully lift the cartridge door case and set aside.

## Step 5



- Take the cartridge doors out of the top casing.
- ☑ Keep the correct cartridge doors together. Note the door numbers and position.
  - Doors numbered two and four are for NES cartridges.
  - Doors numbered three are for SNES cartridges.

To reassemble your device, follow these instructions in reverse order.