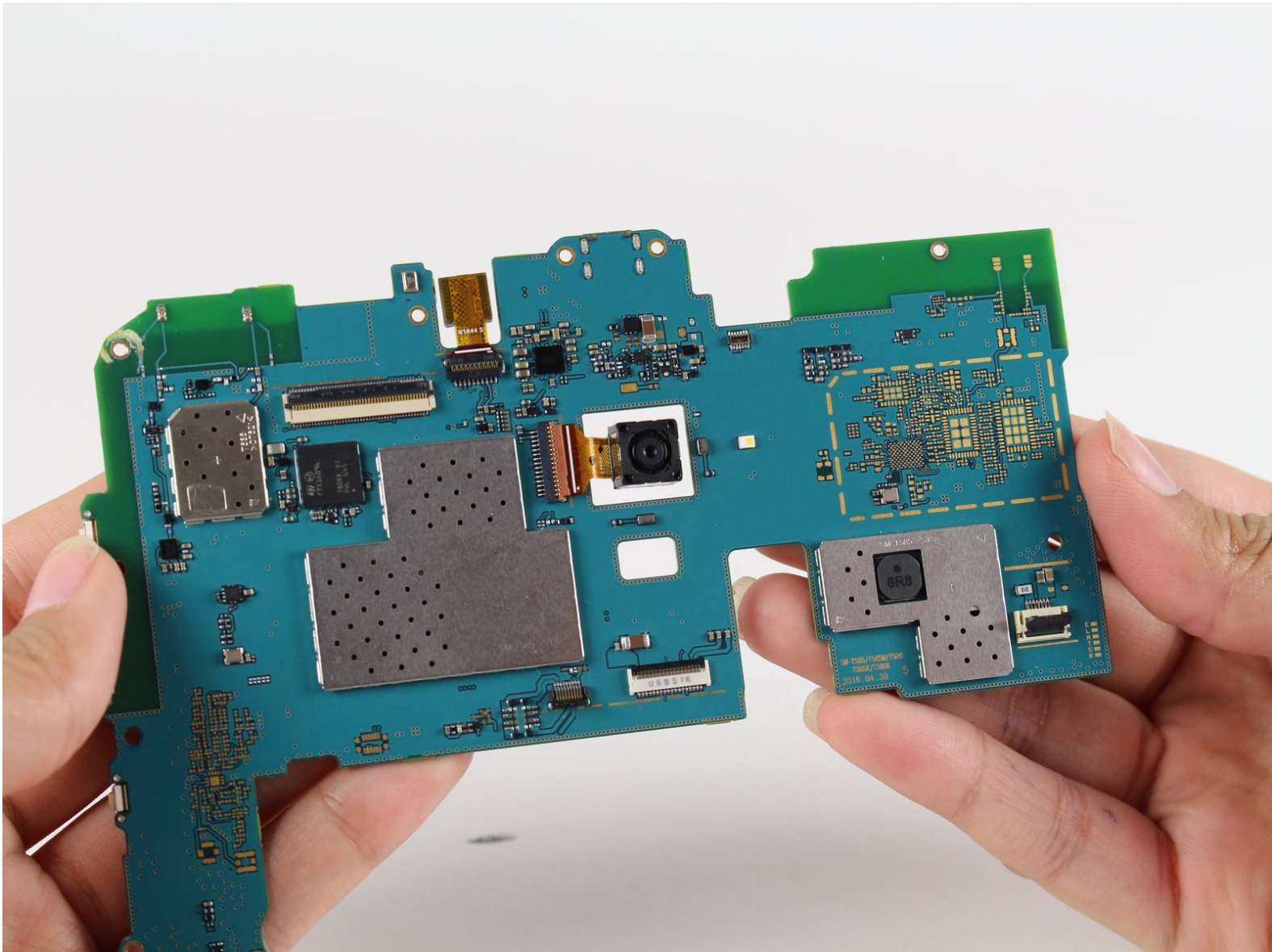




Samsung Galaxy Tab A 10.1 Motherboard Replacement

How to replace a motherboard in the Samsung Galaxy Tab A 10.1. sm-p585 with s-pen

Written By: Isabella Li



INTRODUCTION

If you have a damaged, broken, or corrupted motherboard, this guide will help you replace it.



TOOLS:

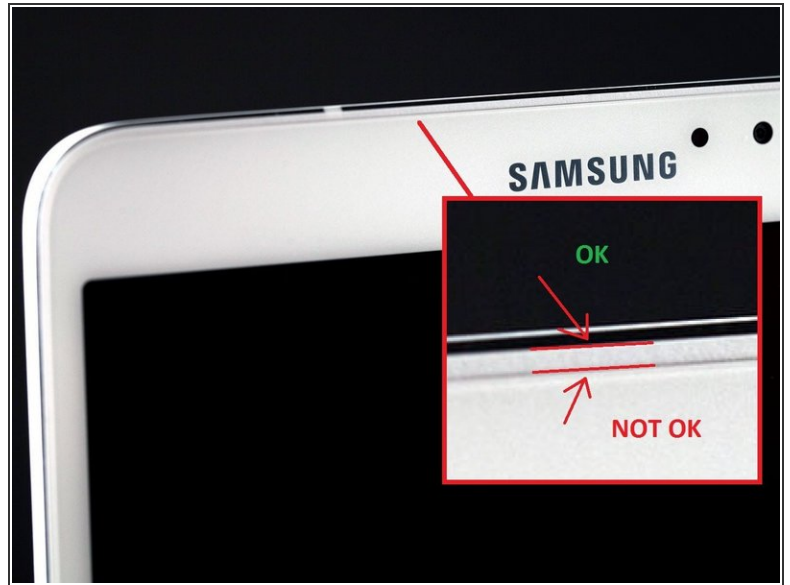
- [Heat Gun](#) (1)
- [iFixit Opening Tools](#) (1)
- [Phillips #000 Screwdriver](#) (1)



PARTS:

- [Galaxy Tab A 10.1 \(Wi-Fi\) Motherboard](#) (1)

Step 1 — Back Panel



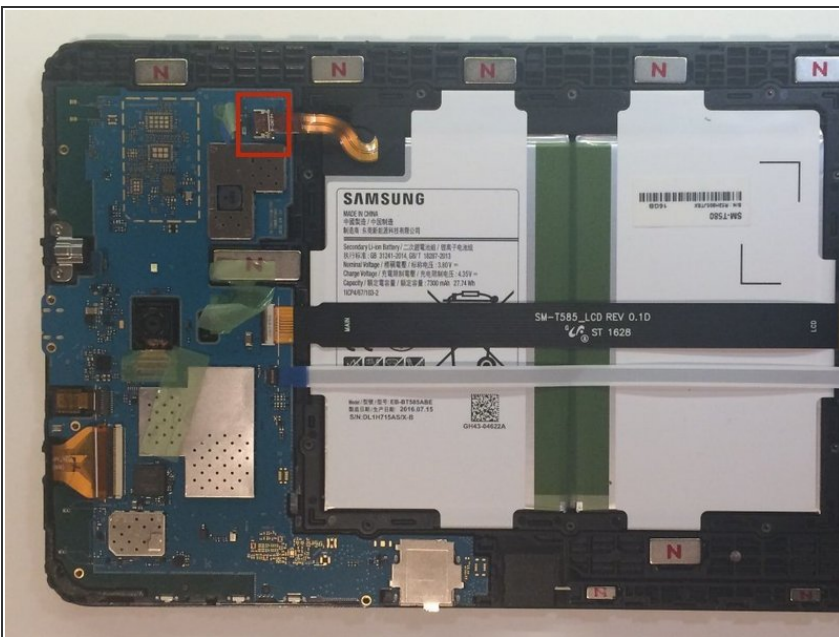
- Have the front of the device facing you.
 - Begin near one of the curved edges of the device (see photo two for visual example).
 - Place a plastic opening tool between the front and back panels.
- ⚠ If a plastic opening tool doesn't work, using a metal spudger may work, but it may damage the plastic on the device.
- ⚠ Remember to remove the micro SD card (if present) before you begin.

Step 2



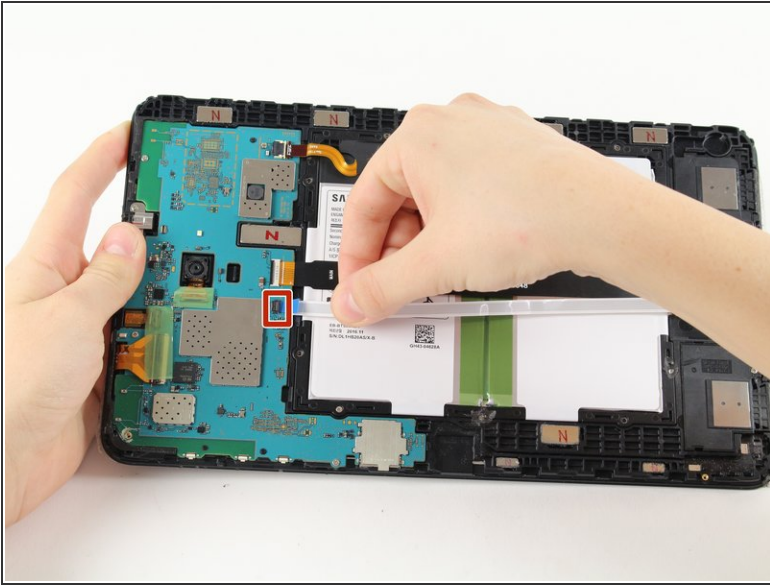
- Once the plastic opening tool is fully inserted, wedge it around the device's edges to separate the panels.
- Lift the back panel off of the device.
- ⓘ The back panel will make a clicking noise while being lifted off of the device.

Step 3 — Disconnecting the battery



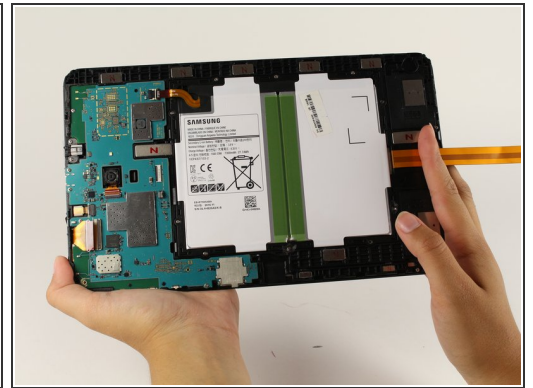
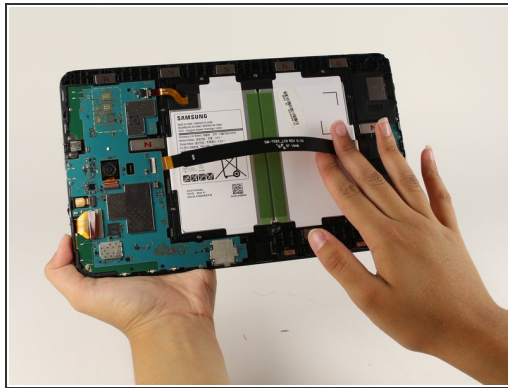
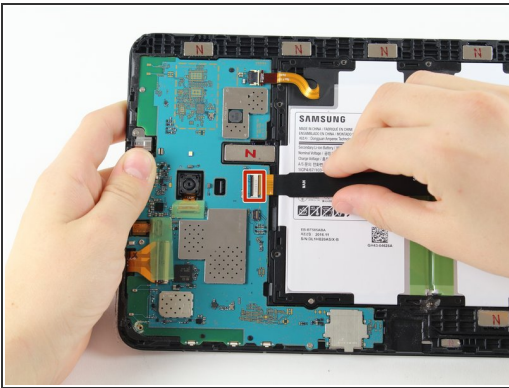
- Remove the adhesive film and flip up the retaining flap on the ZIF battery connector.
- Slide the orange battery ribbon cable out of the ZIF connector.

Step 4



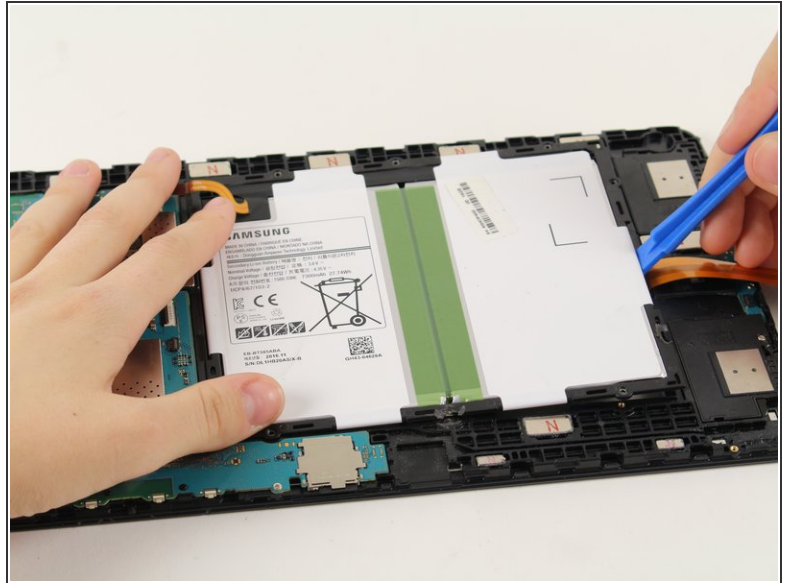
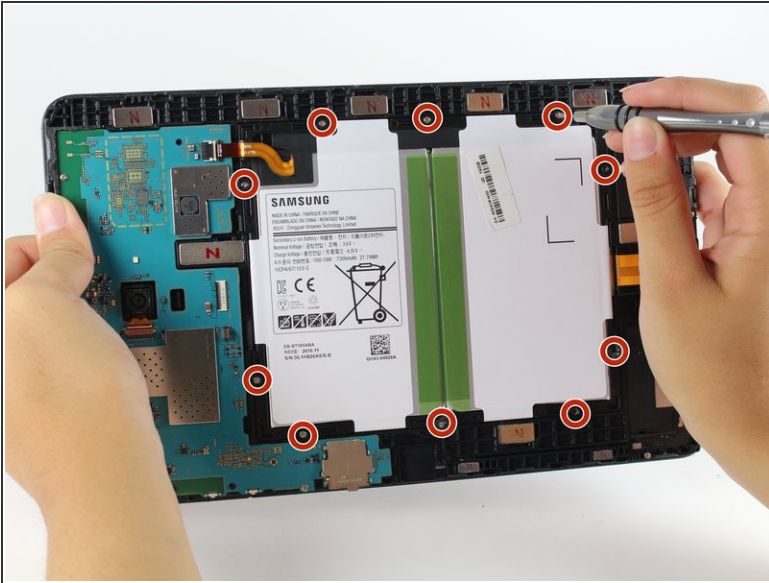
- Remove the adhesive film, lift the retaining tab and withdraw the white speaker ribbon.

Step 5



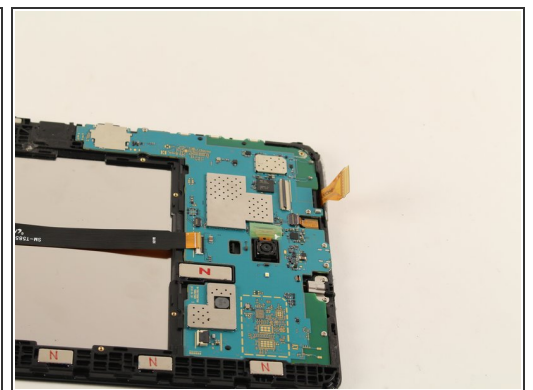
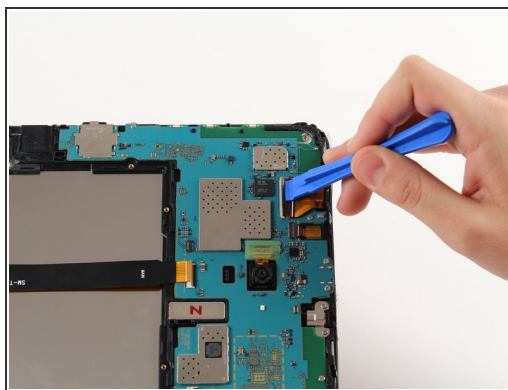
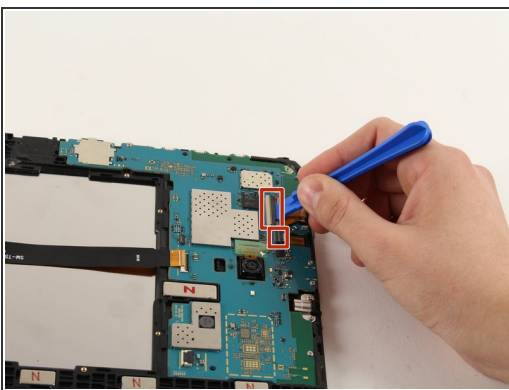
- Lift the retaining tab and withdraw the black LCD ribbon.

Step 6 — Battery removal



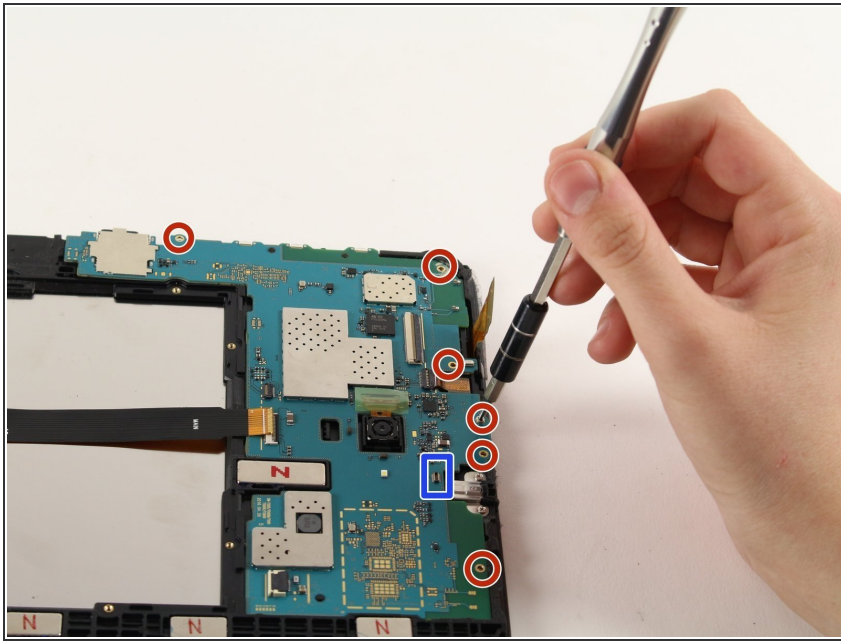
- Using a Phillips #000 screwdriver, remove the ten 4 mm screws around the battery.
 - Slide a plastic opening tool under the bottom of the battery close to the speakers and lift up.
- ⚠ The large rectangular white and black piece is the entire battery. Be careful not to puncture it.

Step 7 — Motherboard



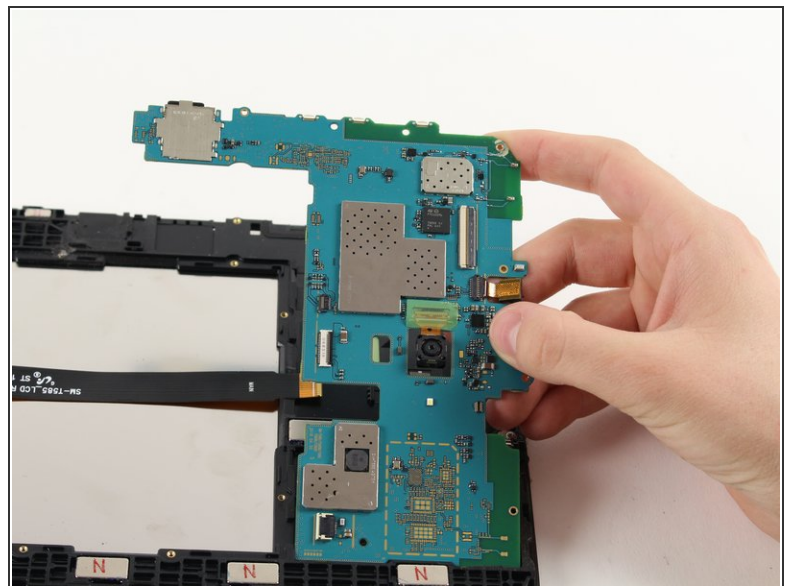
- Flip up the two ZIF connectors on the motherboard using the plastic opening tool.
- Slide the orange ribbon cables out of the ZIF connectors.
- Remove the front-facing camera.

Step 8



- Disconnect the headphone jack from the motherboard.
- Use a Phillips # 000 to remove six 4mm screws.

Step 9



- Lodge the plastic opening tool under and lift the motherboard out of the tablet.
- ⚠ Be careful not to snag any connectors.
- Remove the metal bracket that was underneath the charging port and set aside.

To reassemble your device, follow these instructions in reverse order.