



Logitech Harmony 950 Keypad Replacement

If the buttons on the keypad are not...

Written By: Blake Sanborn



INTRODUCTION

If the buttons on the keypad are not responsive, use this guide to replace the keypad.

TOOLS:

[iFixit Opening Tool](#) (1)


[Phillips #0 Screwdriver](#) (1)

[Tweezers](#) (1)

[ESD Safe Blunt Nose Tweezers](#) (1)

Step 1 — Battery



 Make sure the remote control is powered off before starting.

- Use the Opening Tool to open the port cover at the bottom of the remote control.
- Bend the cover back to gain easy access to the screws.

Step 2



- Use the Phillips #0 Screwdriver to remove the (2) two 6mm screws.
- Pull the bottom cover off of the remote control.

Step 3



- Use the Phillips #1 Screwdriver to remove the (2) two 6mm screws.
- There should be a gap on each side to fit the Opening Tool. Use the Opening Tool to open the back cover (Soft Touch cover) using the gap.

Step 4



- Use the Opening Tool to lift the battery out of the case.
- Gently pull the cable out of the socket to unplug the battery.

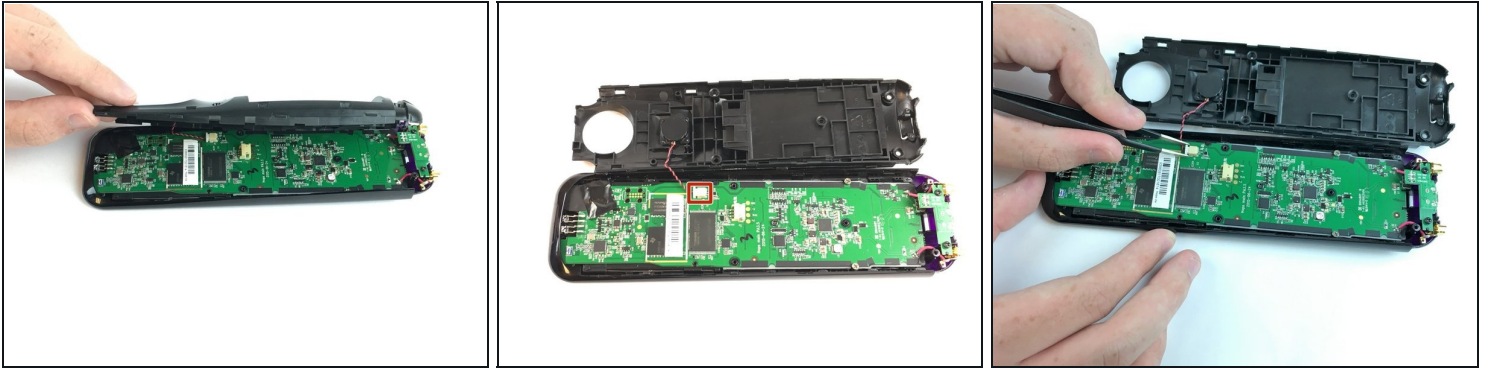
⚠ Be careful not to damage any part of the remote when pulling the cable out.

Step 5 — Keypad



- Use the J0 Philips Head Screwdriver to remove the three 6mm screws.
 - Push the opening tool into the gap along the side of the remote, then slide it across until you hear clicking sounds.
- ① You need to repeat this process for both sides of the remote.

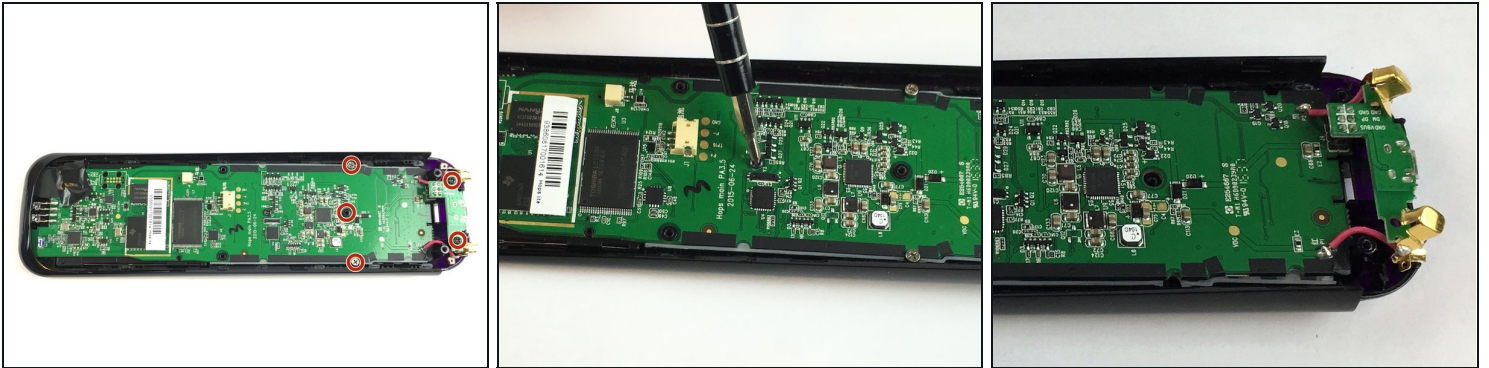
Step 6



⚠ Carefully remove the back cover and place it next to the remote. Be careful not to detach the wire during this process.

- Use the angled [tweezers](#) to carefully pull the white cable end off of the remote and disconnect it.

Step 7



- Use the J0 Philips Head Screwdriver to remove the 5 6mm screws.

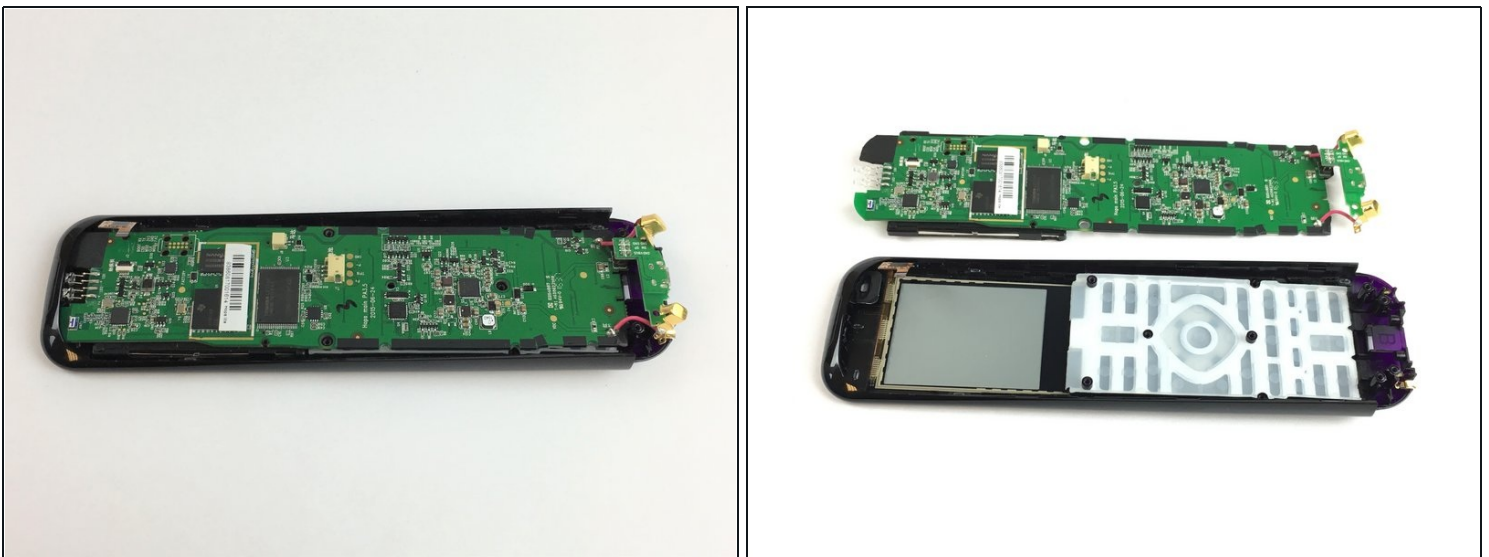
⚠ Be careful not to detach the pink wires when removing the gold charging conductors.

Step 8



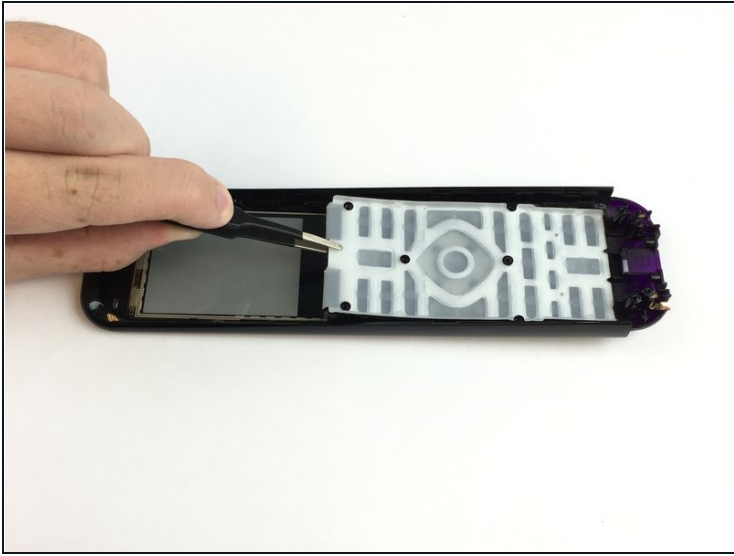
- Remove the black tape to access the cable underneath.
- Use the angled tweezers to flip the black lock up 90° and release the cable.
- Slide the yellow cable to disconnect it from the circuit board.

Step 9



- Pull the circuit board off of the remote from the bottom, and lift up to detach it from the cover.
 - ① It can be difficult to detach the circuit board without damaging the connectors. If you just need access to the keypad, lift the board up starting with the bottom, until you can hinge the top end off. Use a tool or pick to hold the board up until you replace it.

Step 10



- Use the Blunt Tweezers to carefully remove the keypad from the cover of the remote.

To reassemble your device, follow these instructions in reverse order.