



Archived

HTC Vive Lens Replacement

The HTC Vive's lenses can become scratched,...

Written By: Caleb Watts



INTRODUCTION

The HTC Vive's lenses can become scratched, cracked, or dirty with use. This guide will show you how to replace one or both of the HTC Vive lenses.

TOOLS:

[T6 Torx Screwdriver](#) (1)

[Prying and Opening Tool Assortment](#) (1)

[Phillips #00 Screwdriver](#) (1)

[Tweezers](#) (1)

Step 1 — Release the upper head strap



 Be sure to power down and disconnect your Vive before beginning.

- Pull the hook-and-loop (Velcro) closure at the top of the head strap apart to release the top of the head strap.

Step 2 — Remove the upper head strap



- Slide the top part of the head strap through its metal loop on the headset to remove it.

Step 3 — Remove the right side of the head strap



- Pull the hook-and-loop closure at the right side of the head strap apart to release the right side of the head strap.
- Slide the right side of the head strap through its metal loop to remove it.

Step 4 — Remove the left side of the head strap



- Pull the hook-and-loop closure at the left side of the head strap apart to release the left side of the head strap.
- Slide the left side of the head strap through its metal loop to remove it.

Step 5 — Remove the head strap



- Slide the head strap along the cable, away from the Vive.
- When the head strap comes to the end of the cable, gently slide it over the plugs and remove it.

Step 6 — Unscrew the head strap mounts



⚠ Be sure to power down and disconnect your Vive before beginning.

- Use a T5 Torx driver to remove the two 12 mm-long screws securing the head strap mounts on either side of the headset.
 - ① For some devices, a T6 Torx driver may work better.
- ① The mounts may fall off when the screws are removed, so be careful not to lose any parts.

Step 7 — Remove the head strap mounts



- Remove both head strap mounts.

Step 8 — Remove the facerest



- Slide the facerest straight away from the headset to remove it.

Step 9 — Unscrew the outer shell



- Use tweezers to remove the small stickers over the four screws securing the outer shell.
- Use a T5 Torx driver to remove the four 3.4 mm-long screws securing the outer shell.

Step 10 — Remove the outer shell



- Use the flat end of a spudger to pry up the top edge of the right half of the outer shell, behind the component cover and near the seam in the center, until it is unclipped from the headset.

Step 11



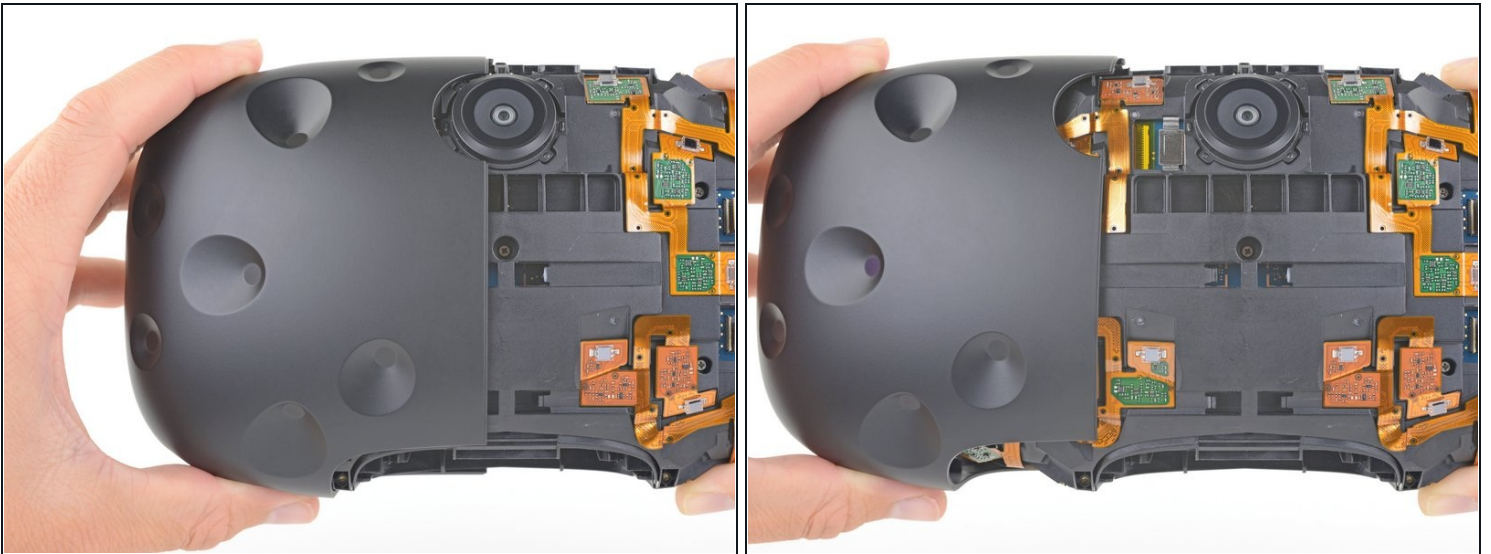
- Grasp the right half the outer shell and pull it to the right and toward the front of the headset until you feel the clips on the front of the cover release.
- If the shell is difficult to remove, try prying along the seam with the flat end of a spudger to release the clips.

Step 12



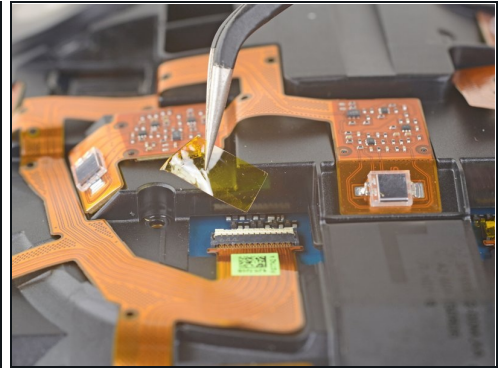
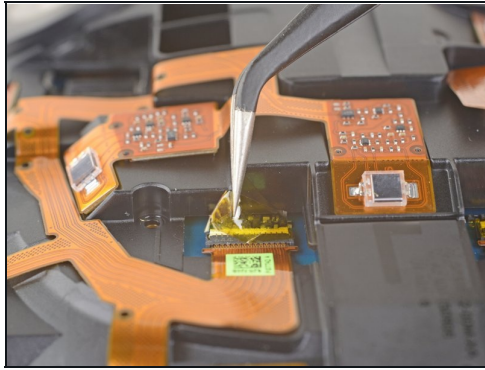
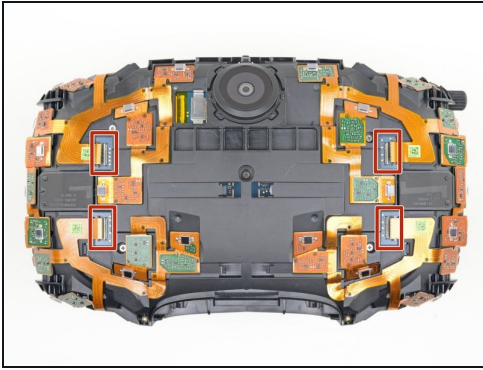
- Slide the right side of the outer shell to the right and off of the headset.

Step 13



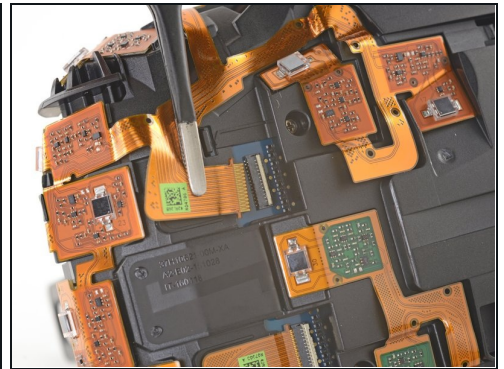
- Repeat the last three steps for the left side of the outer shell and remove it.

Step 14 — Disconnect the sensor array cables



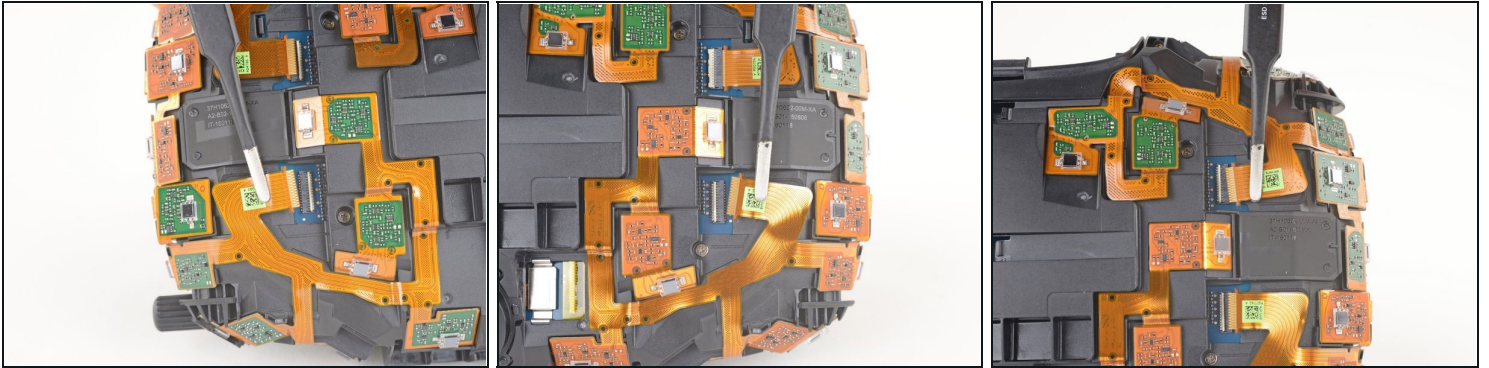
- Use tweezers to remove the clear tape over all four of the sensor array cable connectors.

Step 15



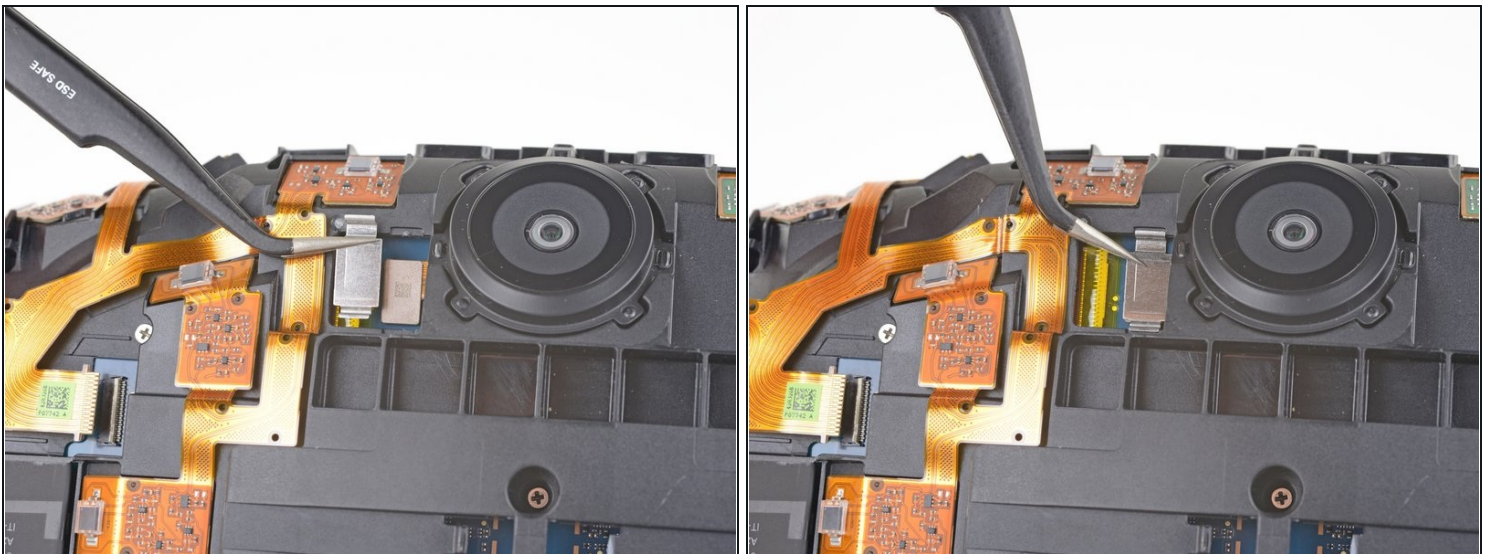
- Use the pointed end of a spudger to flip up the small locking flap on one of the sensor array [ZIF connectors](#).
- Slide the cable straight out of its socket on the motherboard.

Step 16



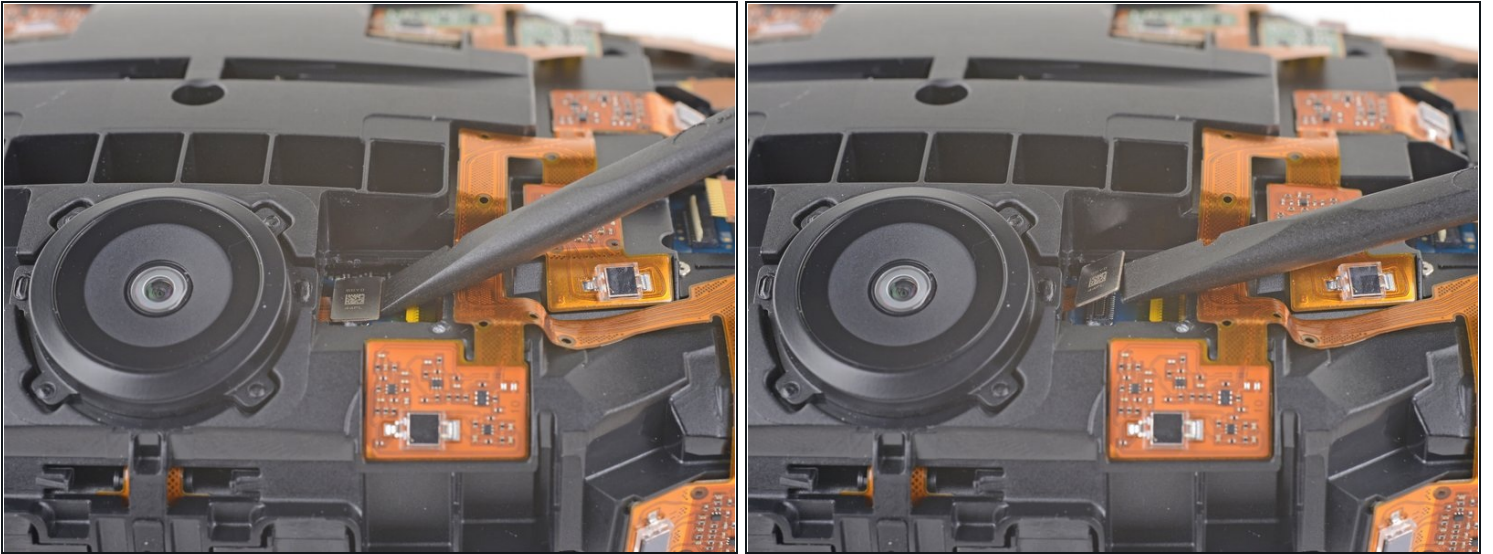
- Repeat the previous step for the remaining three sensor array cables to disconnect the remaining cables.

Step 17



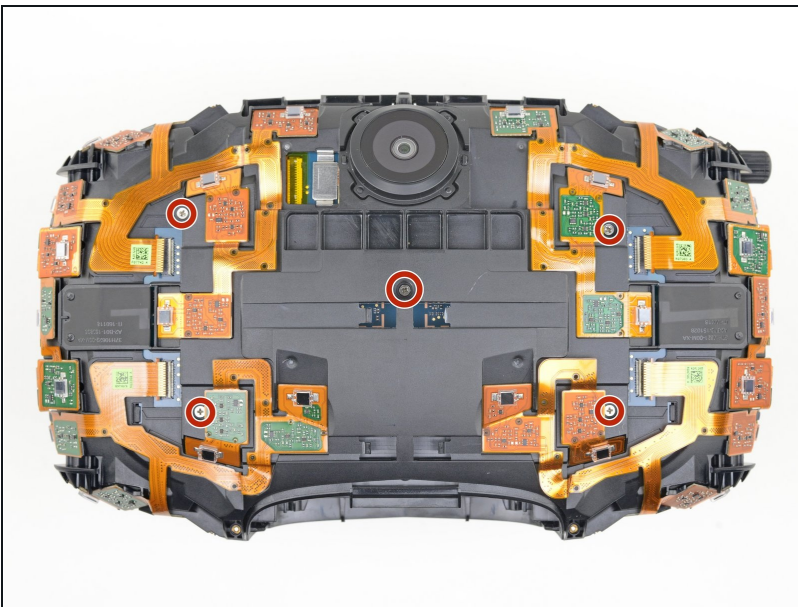
- Use tweezers or a spudger to pry up the camera cable cover and remove it.

Step 18



- Use the flat end of a spudger to pry the camera cable connector straight up from its socket on the motherboard.

Step 19 — Unscrew the sensor array



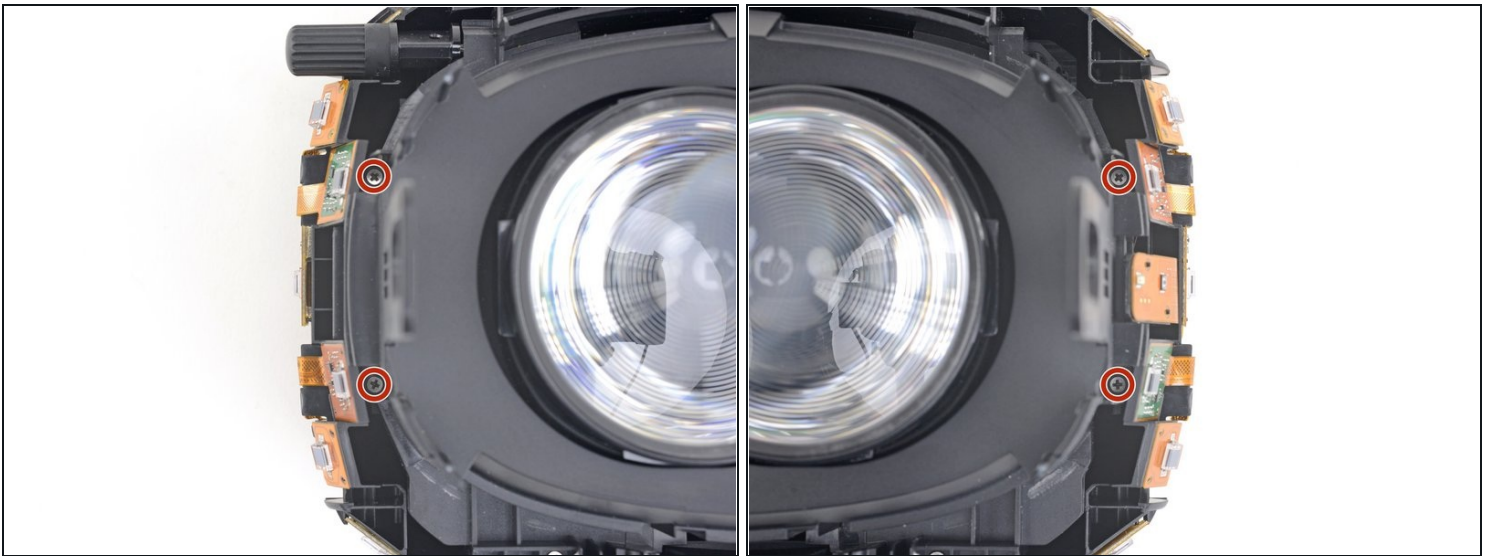
- Use a PH000 driver to remove the five 3.9 mm screws securing the sensor array.

Step 20



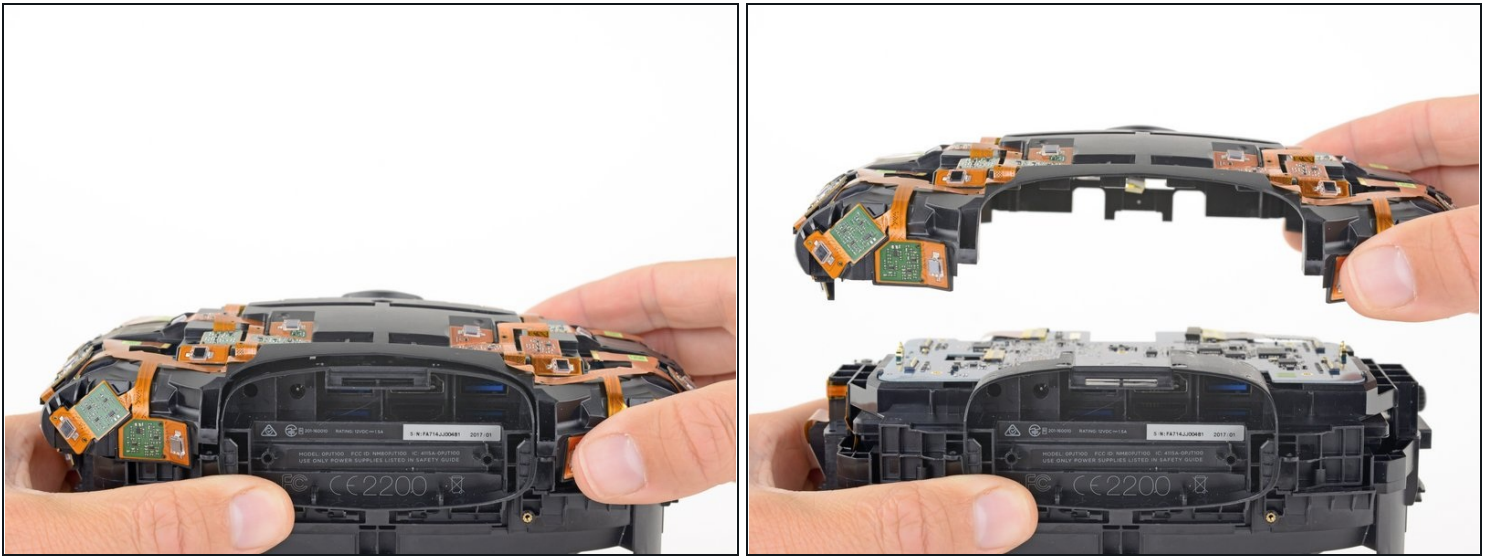
- Use a PH000 driver to remove the four 3.9 mm screws securing the sensor array.

Step 21



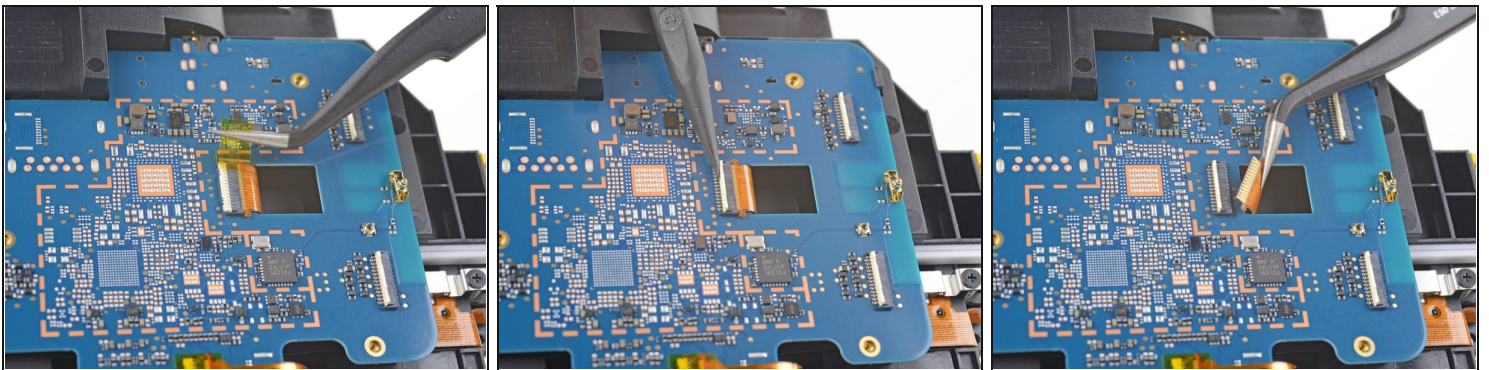
- Use a PH000 driver to remove the four 3.9 mm screws securing the sensor array.
 - ⓘ You'll need a [narrow, long-shaft driver](#) to reach these screws.

Step 22 — Remove the sensor array



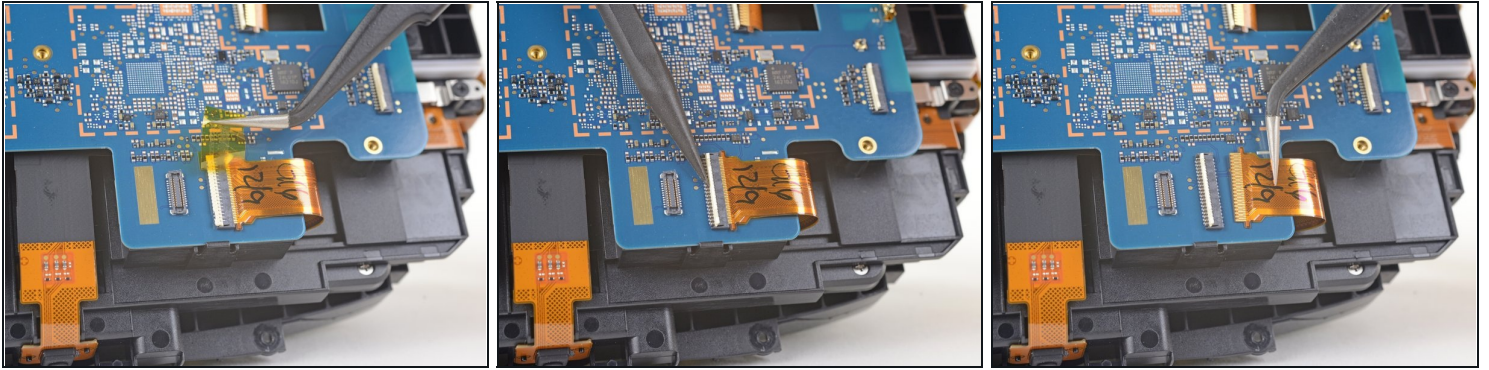
- Lift the sensor array away from the headset to remove it.

Step 23 — Disconnect the motherboard



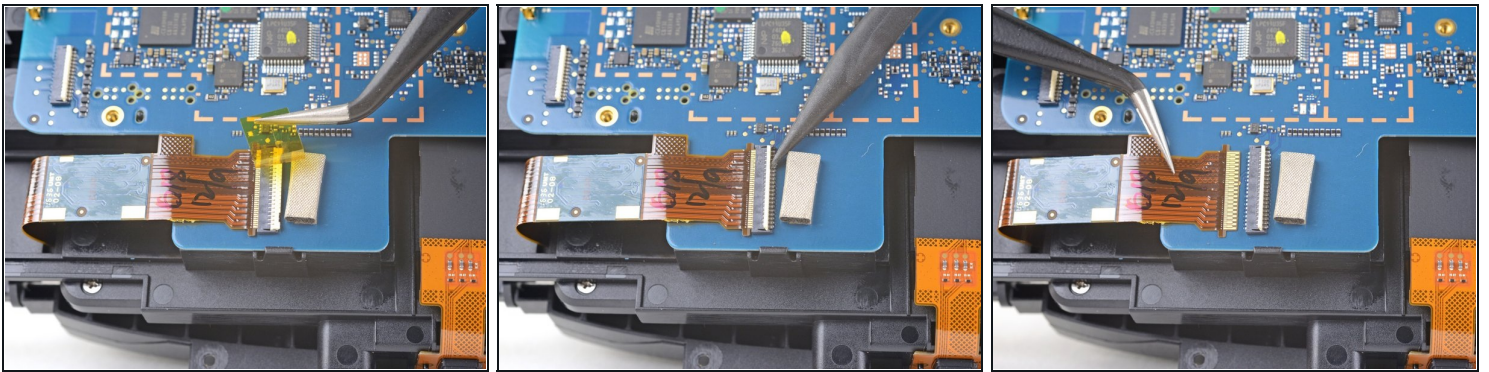
- Remove the tape covering the interconnect cable socket.
- Use the point of a spudger to flip up the small locking flap on the cable socket.
- Slide the interconnect cable straight out of its socket on the motherboard.

Step 24



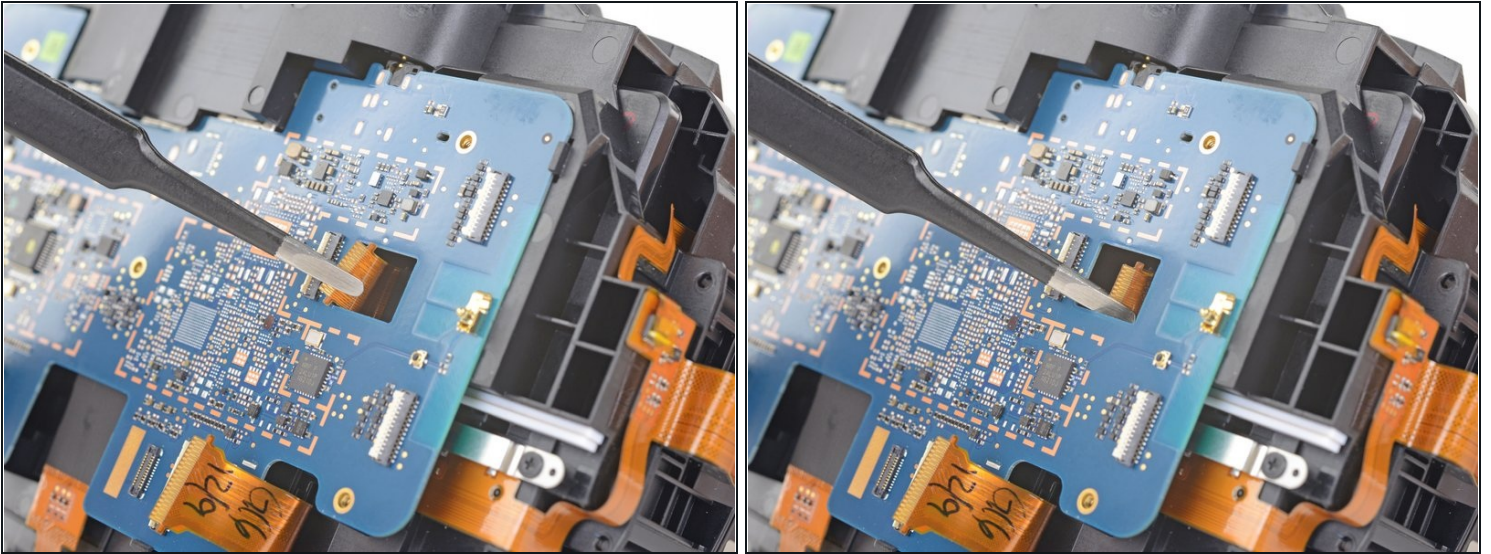
- Remove the tape covering the left OLED cable socket.
- Use the point of a spudger to flip up the small locking flap on the cable socket.
- Slide the left OLED cable straight out of its socket on the motherboard.

Step 25



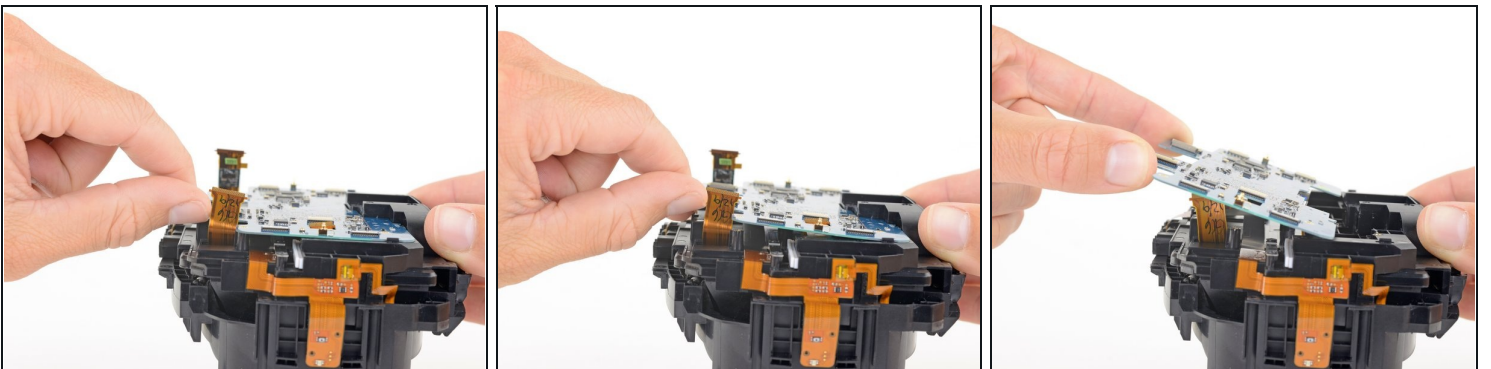
- Remove the tape covering the right OLED cable socket.
- Use the point of a spudger to flip up the small locking flap on the cable socket.
- Slide the right OLED cable straight out of its socket on the motherboard.

Step 26



- Use a pair tweezers to slightly twist the interconnect cable and press it down until the tabs on either side of the cable clear the hole in the motherboard.
- ☑ During reassembly, make sure to thread the interconnect cable through its slot in the motherboard.

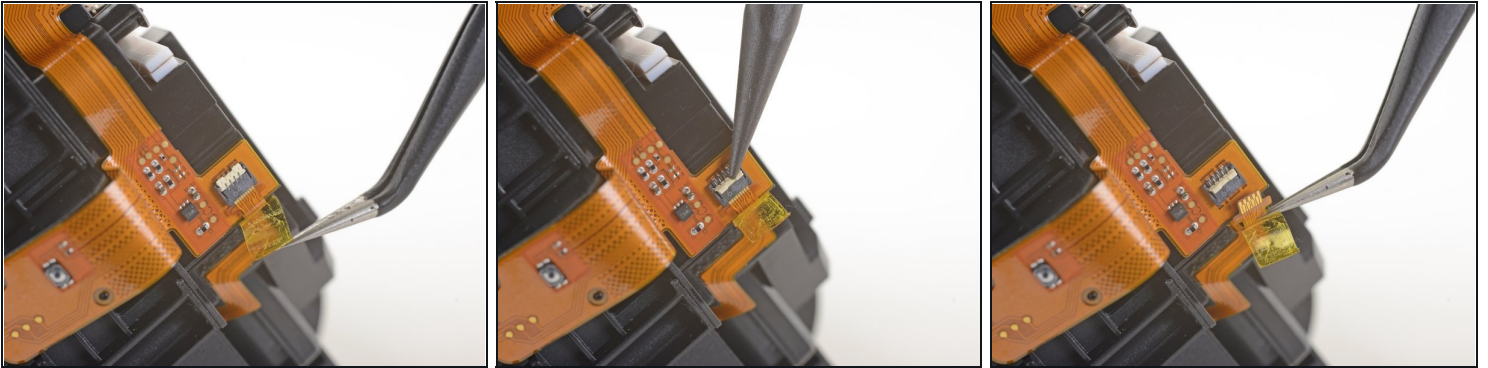
Step 27 — Remove the motherboard



- Press the non-port-end of the motherboard toward the top of headset while hinging it away from the midframe to free it from the clips securing that end.
- Slide the motherboard toward the bottom of the headset, over the clips, to remove it.

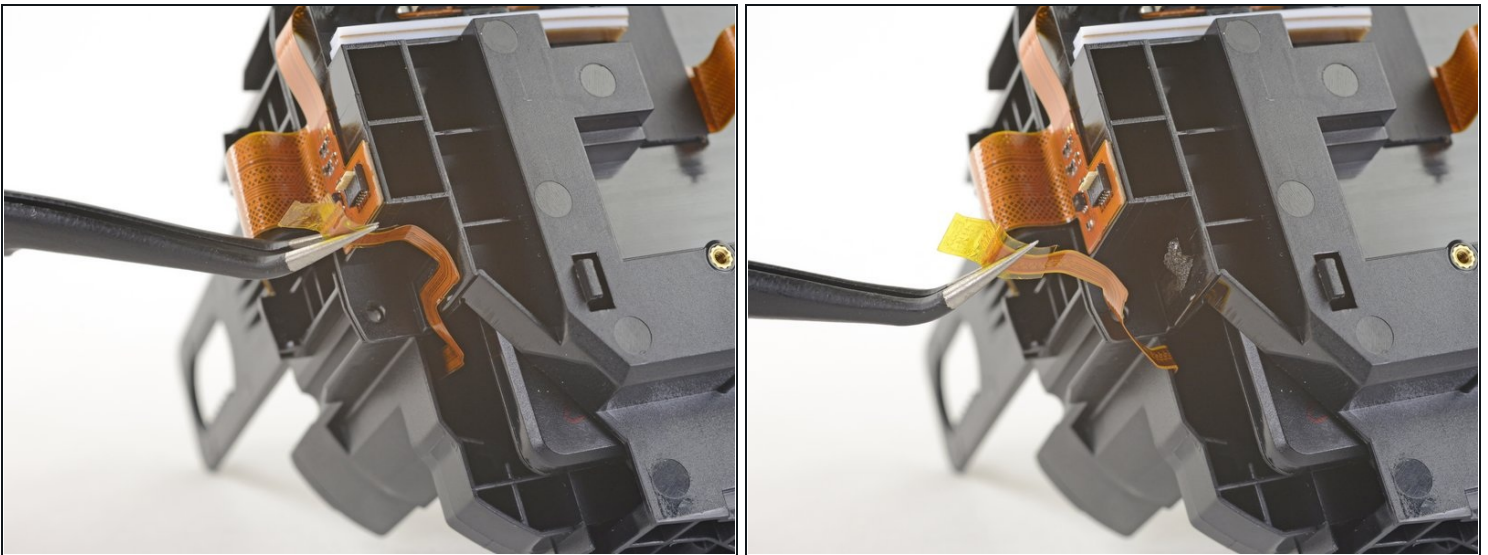
⚠ Take care not to snag any cables during removal.

Step 28 — Disconnect the facerest midframe



- Use a pair of tweezers to peel back the plastic covering the eyepiece midframe cable socket.
- Use the pointed end of a spudger to flip up the plastic locking flap on the socket.
- Slide the cable straight out of its socket to remove it.

Step 29



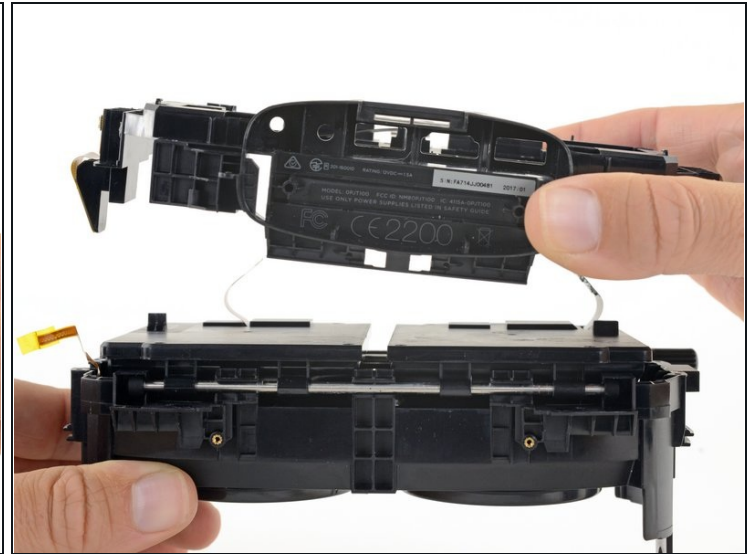
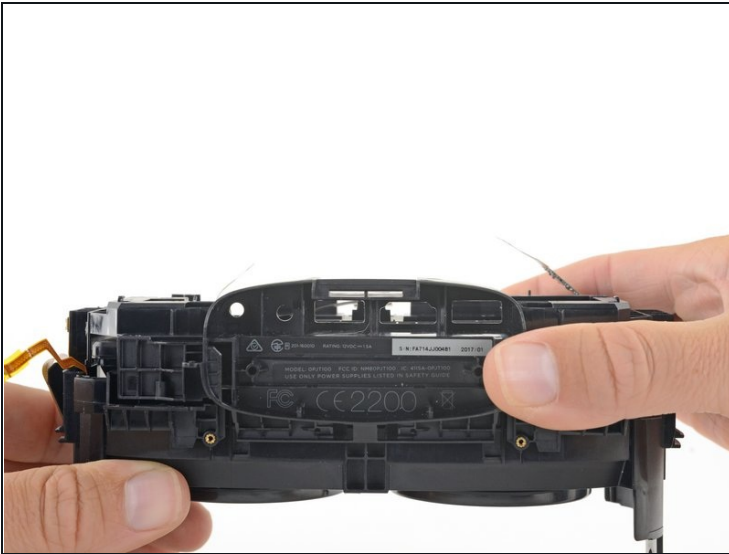
- Gently peel the eyepiece midframe cable off of the facerest midframe.

Step 30 — Unscrew the facerest midframe



- Use a PH000 driver to remove the four 3.9 mm screws securing the facerest midframe.

Step 31 — Remove the facerest midframe



- Lift the facerest midframe off of the eyepiece midframe.

⚠ Take care not to snag any cables during removal.

Step 32 — Remove the eyepiece gasket



- Gently lift the eyepiece gasket off of the lens and OLED frames to remove it.

Step 33 — Remove the support rod



- Pull the rubber bumpers off of either end of the support rod.

Step 34



- Slide the support rod out of its brackets on the lens and OLED frames.

Step 35 — Remove the focus rod



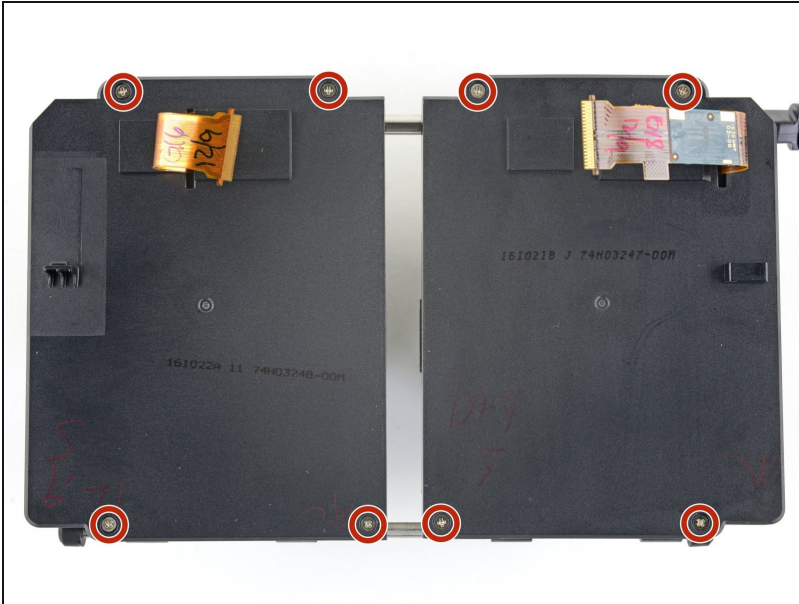
- Use a PH000 driver to remove the eight 3.1 mm screws securing the focus rod brackets.

Step 36



- Remove the focus rod and its brackets.

Step 37 — Unscrew the OLED covers



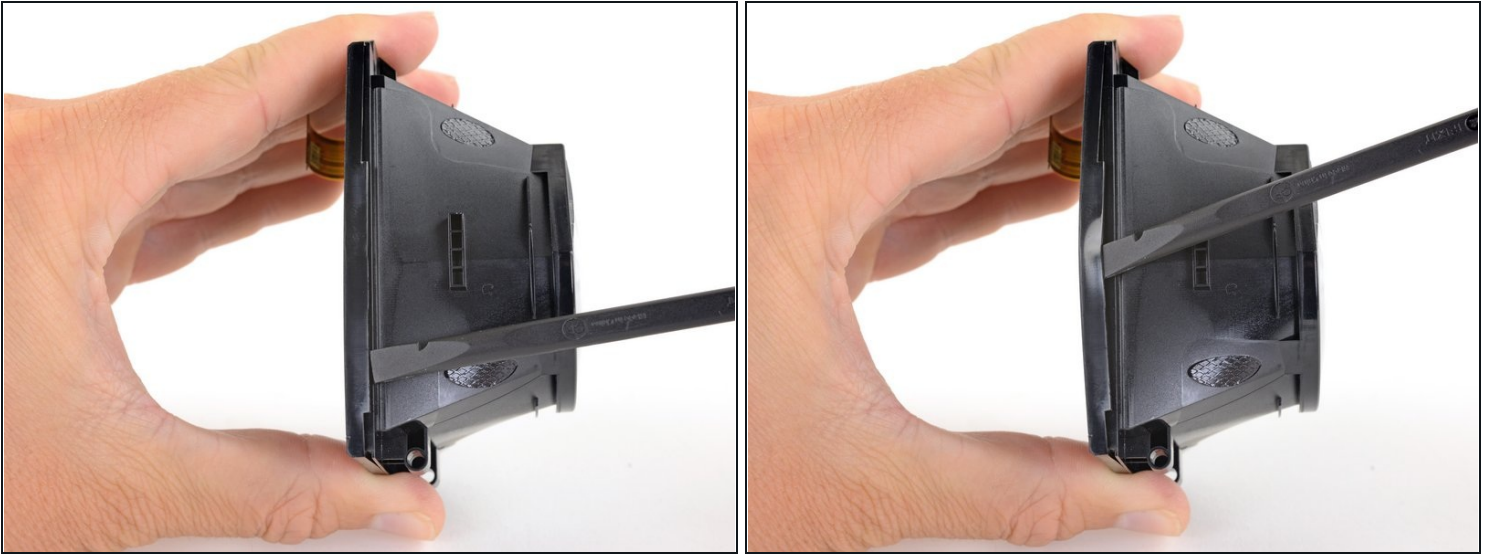
- Use a PH000 driver to remove the eight 2.4 mm screws securing the OLED covers.

Step 38 — Remove the OLED covers



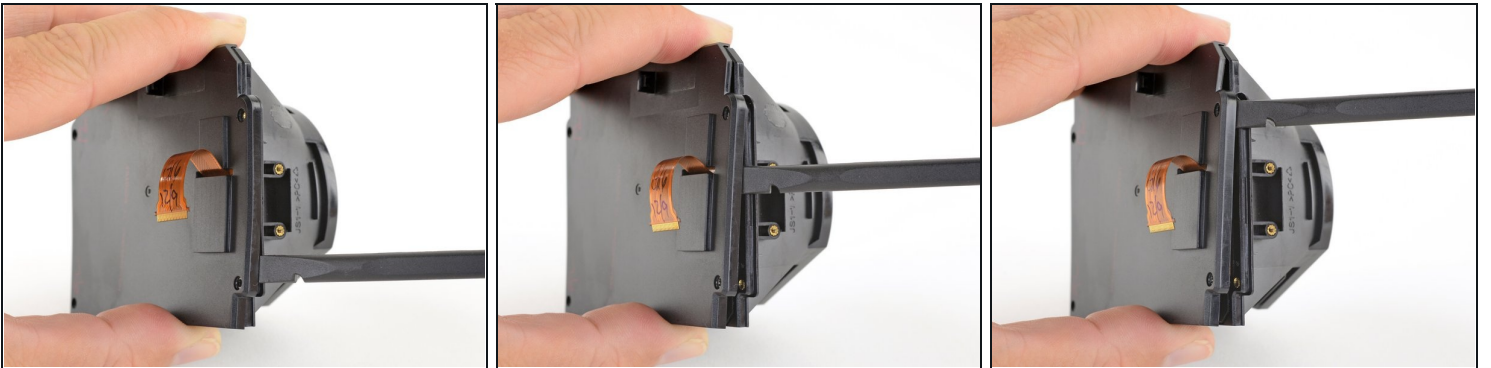
- Use the flat end of a spudger push up one edge of the OLED cover and start unclipping that edge.

Step 39



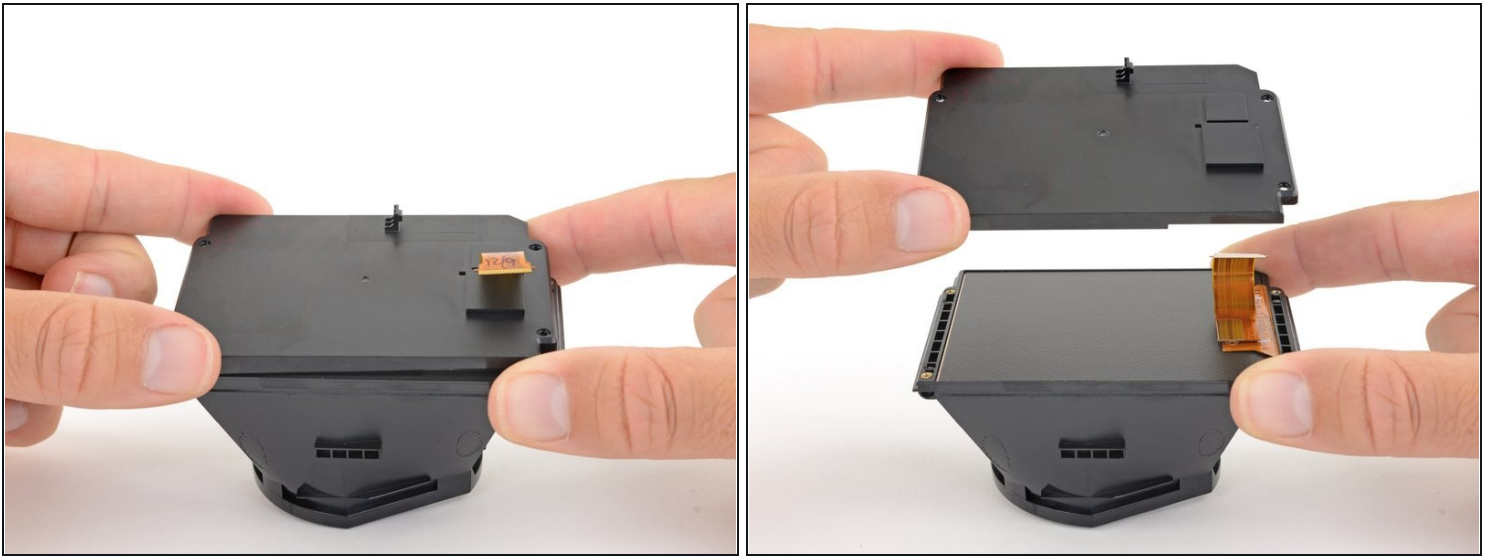
- Slide the spudger under the clip along that edge to free the rest of the edge.

Step 40



- Slide the spudger around the remaining edges of the OLED cover to unclip those edges.

Step 41



- Remove the OLED cover.
 - Repeat the last three steps to remove the other OLED cover.
- ☒ During reassembly, remember to thread the OLED cables through their slots in the OLED cover.

Step 42 — Remove the OLED displays



- Very carefully lift the OLED display by its edges out of its frame.
- ⚠ If you are reusing the OLED displays, be very careful to avoid touching the front of the displays or bending or cracking the displays.**
- Repeat this process for the other OLED display.

Step 43 — Remove the lenses



- Apply an [iOpener](#) to the lens to soften the adhesive securing it to the frame.

Step 44



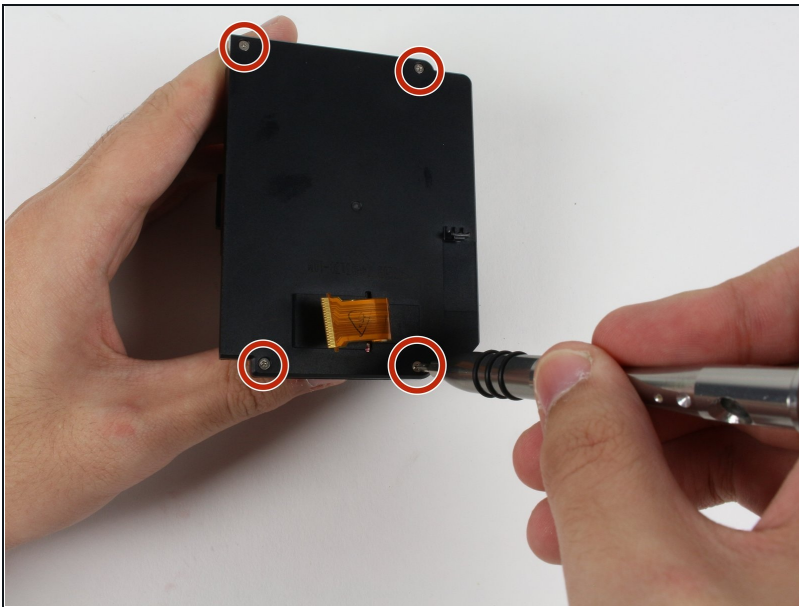
- Use an opening tool to pry up the flat edge of the lens.
- If it's difficult to pry up, apply the iOpener for another 30 seconds to further soften the adhesive.

Step 45 — Remove the lens



- Remove the lens.
- Repeat the last two steps to remove the other lens.
- Only the lens and OLED frames remain.
- ★ During reassembly, make sure the convex side of the lens is facing away from the frame.

Step 46 — OLED Screen



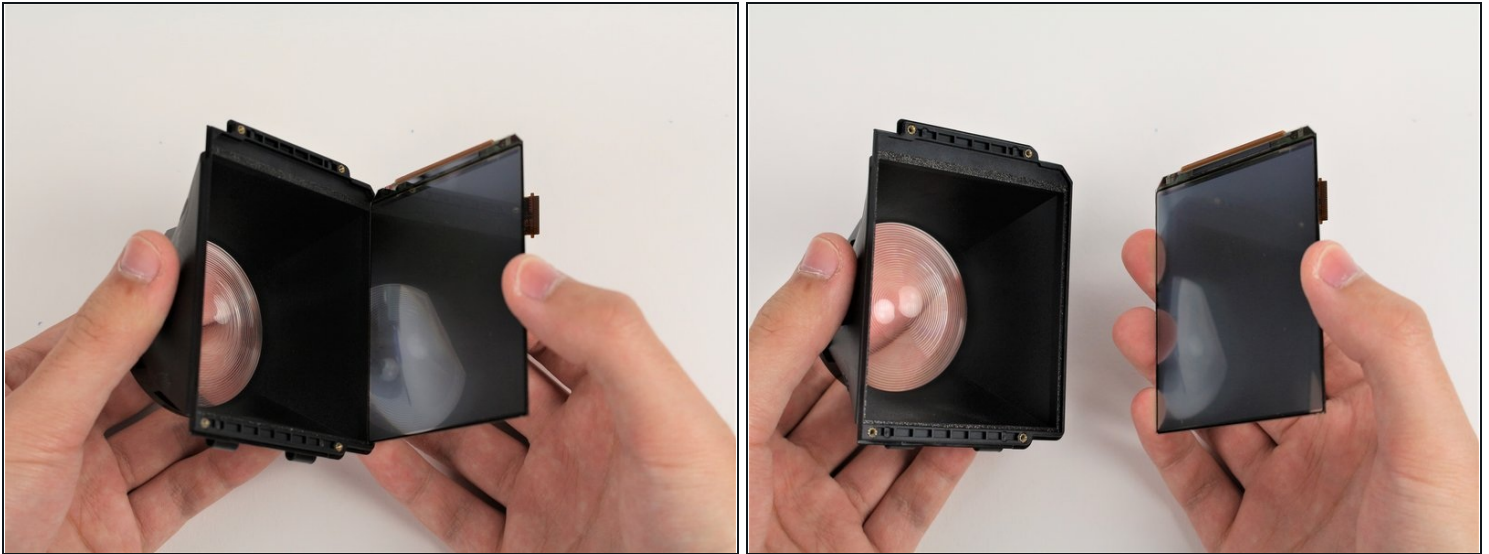
- ⚠ The screws are very close to the screen. Applying too much pressure to the screws can stress or crack the screen. Be careful when unscrewing and screwing around the screen.
- Remove the four 2mm #00 Philips head screws holding the screen in place from the eyepiece assembly.

Step 47



- Use a plastic opening tool to gently pry around the seam between the eyepiece housing and the screen.
- Gently pull the screen cover away from the eyepiece housing, threading the ribbon cable through the hole.

Step 48



- Remove the screen from the eyepiece housing by pulling the two pieces away from each other.

Step 49 — Lens



- Hold your hand in front of the lens and be ready to catch the lens during its removal.
- From the inside of the black plastic housing, push gently around the edges of the lens to remove it.
 - ① Glue holds the lens in place; pushing around the edges will gradually loosen and break the bond. After breaking the bond, the lens will fall forward.

To reassemble your device, follow these instructions in reverse order.