



JBL Xtreme battery replacement

This will show how to change the battery .

Written By: Bert



INTRODUCTION

This will show how to change the battery .



TOOLS:

Heißklebepistole (1)
Phillips #000 Screwdriver (1)
Lötkolben (1)



PARTS:

Akku Pack 8,4 Volt (1)
DC Hohlbuchse 5.5 x 2.1 mit Kabel (1)

Step 1 — Battery



- 8.4 V battery pack for the JBL Extreme.

Step 2



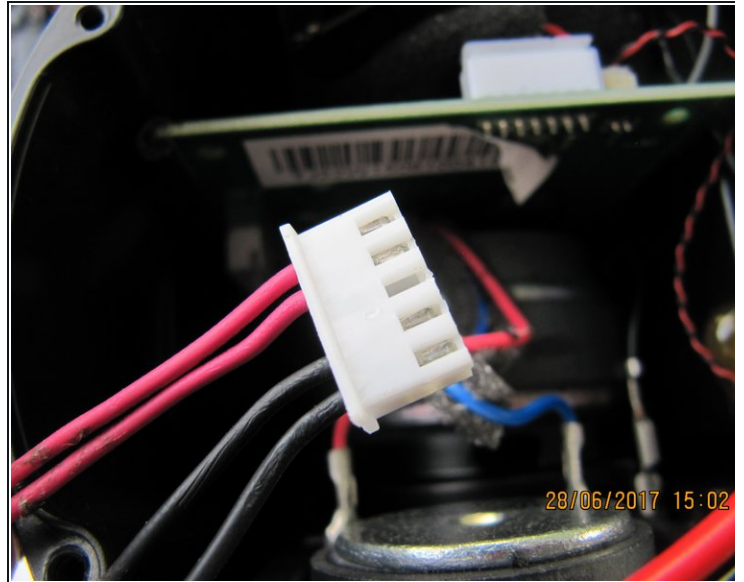
- Unscrew the screws and remove the shell.

Step 3



- Remove the battery pack by unscrewing the 8 screws. Unplug the battery pack. Drill a hole. Seal holes with hot glue for air-tightness.

Step 4



- Solder the positive wires together, and solder the negative wires together. Use a 5.5 x 2.1 hollow DC connector for the power supply. Insulate the cable ends (Heat shrink wrap, electrical tape, etc.)

Step 5



- Battery, 8.4 Volt. 13200mAh 8.4V Rechargeable Battery Pack Charger for Bicycle Light-XML-T6

Step 6



- Solarstorm 2S2P 18650 Battery Case.
- 4xPanasonic NCR18650B 3,7V 3400mAh=14400 mAh
- + 5V USB ON/OFF Button

To reassemble your device, follow these instructions in reverse order.