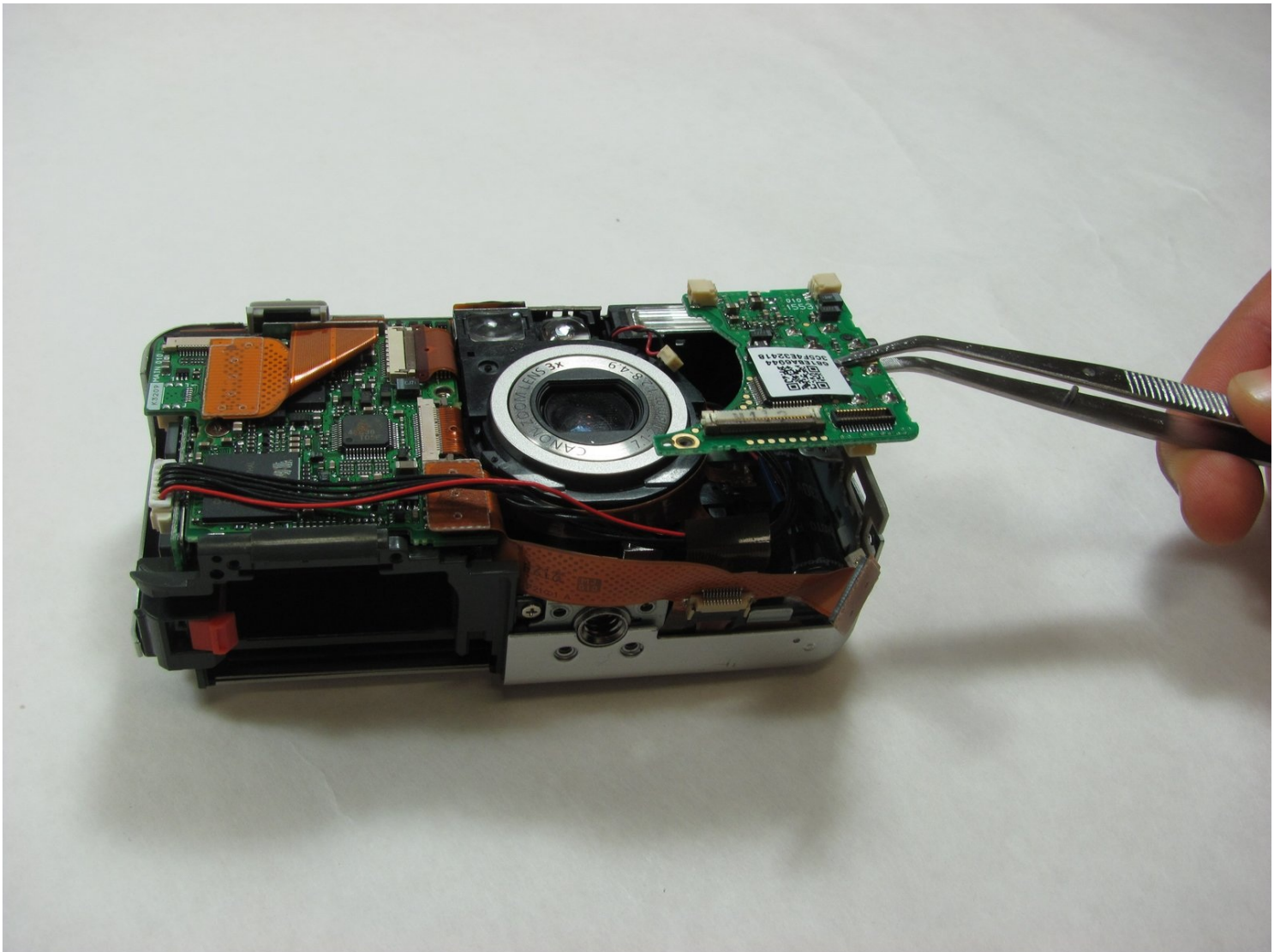




# Canon PowerShot S50 Right Motherboard Replacement

Use this guide to remove the motherboard on the...

Written By: Jacob



# INTRODUCTION

Use this guide to remove the motherboard on the right side of the camera.

## TOOLS:

Fingers (1)

Phillips #00 Screwdriver (1)

Anti-Static Project Tray (1)

Spudger (1)

Tweezers (1)

## Step 1 — Battery



- Place camera LCD side up and press up on the battery door.
- Let it swing open until you can see the battery inside.

## Step 2



- Press down on the orange plastic.
- This will gently eject the battery from its compartment.

## Step 3



- Holding the edges, slide out the battery.



## Step 4 — Front Panel/Battery Door



- Look at the camera from the side with the lanyard and 4 screws.
- Remove the two 3.4 mm screws on the metallic colored part.

## Step 5



- Remove the 3mm screw on the top left.
- ① NOTE: When reassembling, it is helpful to put the top screw back in before placing the front cover back on the camera.
- Now remove the 5.3mm screw on the bottom.

## Step 6



- Place the camera LCD side down.
- Remove the two 5.3mm screws by the battery door.

## Step 7



- Remove the four 3.4mm screws on the bottom of the camera around the tripod mount.
- ① Make sure to keep these screws separate from the previous 5.3 mm screws.

## Step 8



- Stand the camera back up.
- Remove the two 3.6mm screws on the side with the A/V Out port.

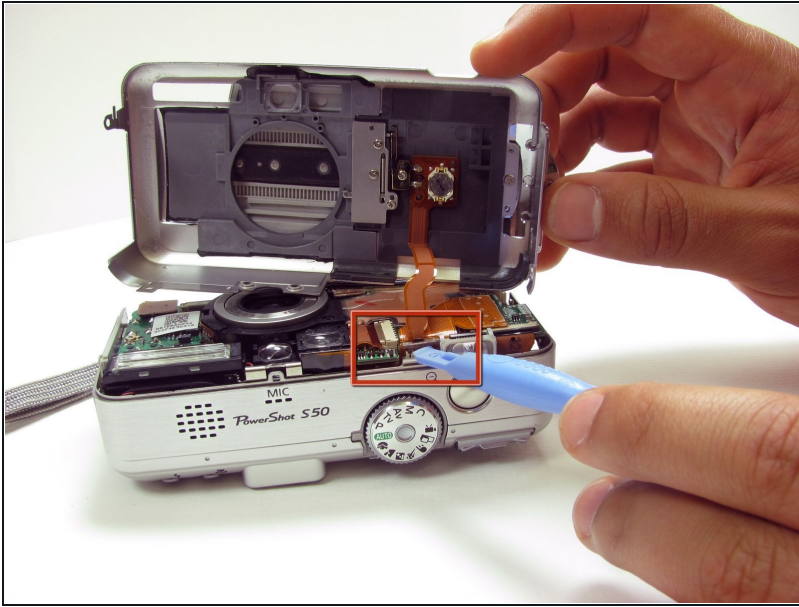
## Step 9



- Lift open the rubber flap covering the A/V Out port.
  - Remove the 3.4mm screw in the center.
- ⓘ During reassembly, put the A/V out rubber door on before replacing the front panel of the camera



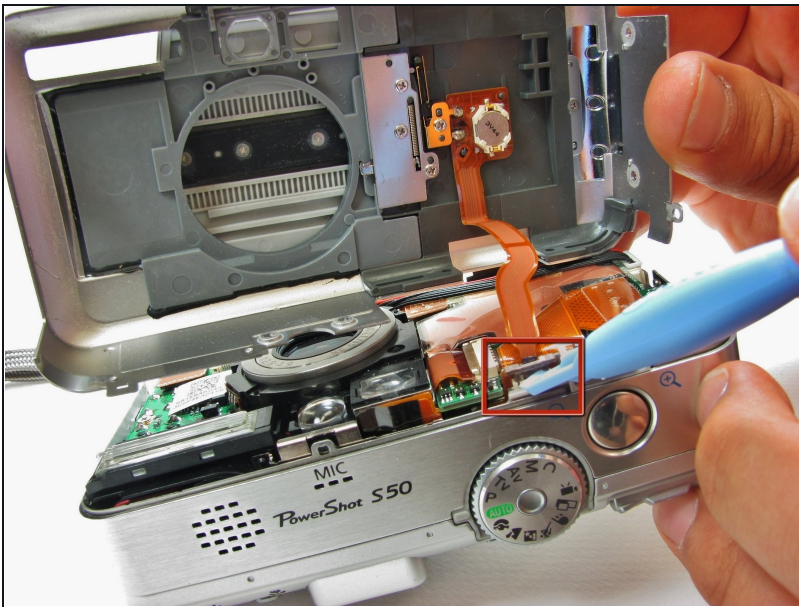
## Step 10



- Use a spudger and gently open up the front panel of the camera.

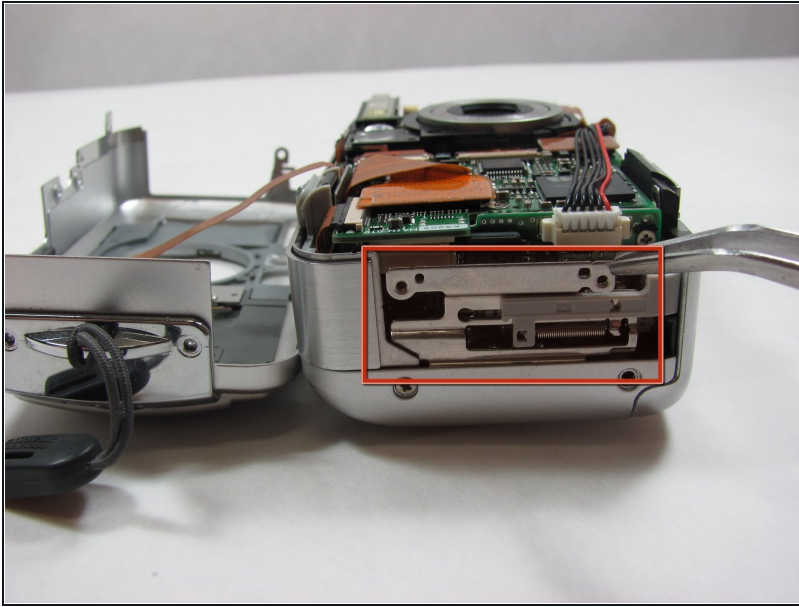
⚠ A thin plastic ribbon will stay connected by a brown piece to front panel of the camera.

## Step 11



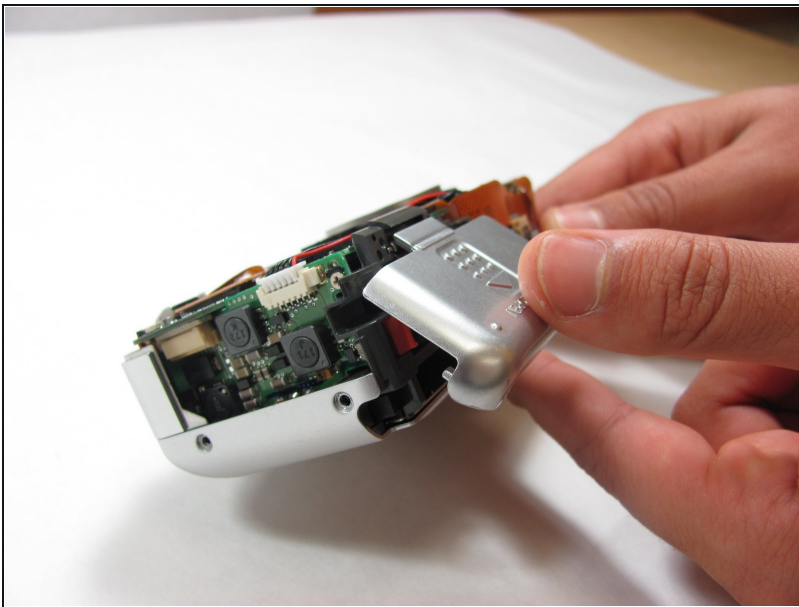
- There will be a brown plastic piece keeping the thin plastic ribbon in place.
- Use the spudger to pull out the brown plastic piece attached to the orange plastic.

## Step 12



- Use a pair of [tweezers](#) and remove the metal piece inside the camera.

## Step 13



- Remove the battery door
  - ① NOTE: Putting this back on requires aligning the spring on the back of the door with the hole on the camera



## Step 14 — Right Motherboard



- Disconnect the two plastic ribbons on the lower half of the right motherboard.
- ⓘ NOTE: You will have to lift up the brown plastic piece in order to pull out the second ribbon wire.

## Step 15



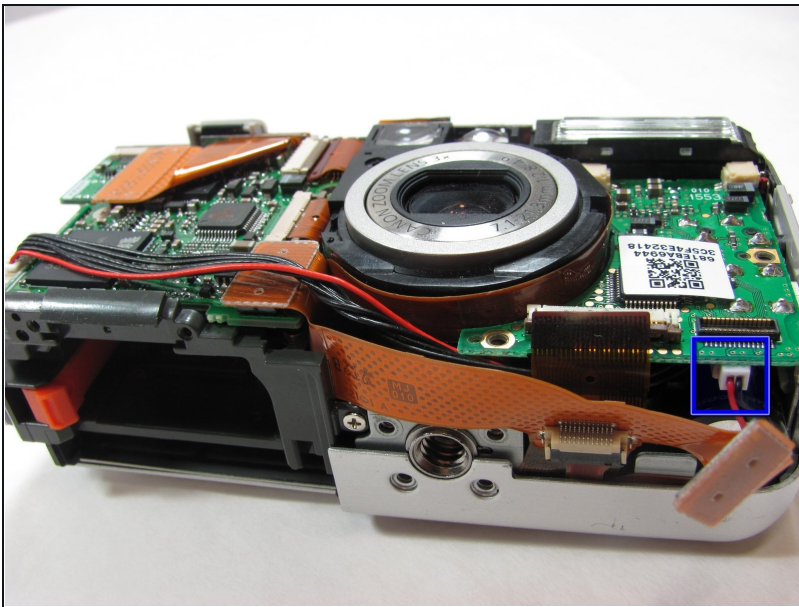
- Remove the two 3.4mm screws on the right motherboard.

## Step 16



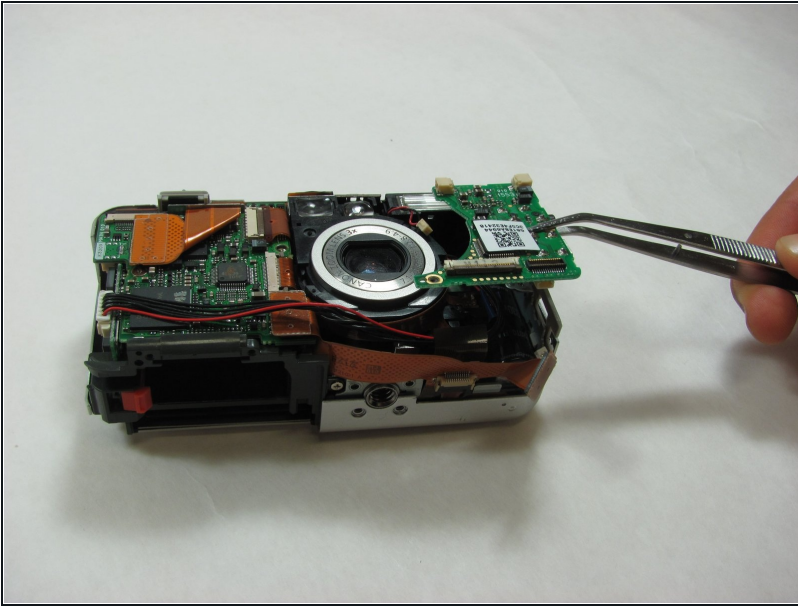
- Disconnect the two wired plugs below the flash.

## Step 17



- Disconnect the wired plug at the bottom of the right motherboard.

## Step 18



- Use a pair of [tweezers](#) to pull the right motherboard away from the main body of the camera.

---

To reassemble your device, follow these instructions in reverse order.