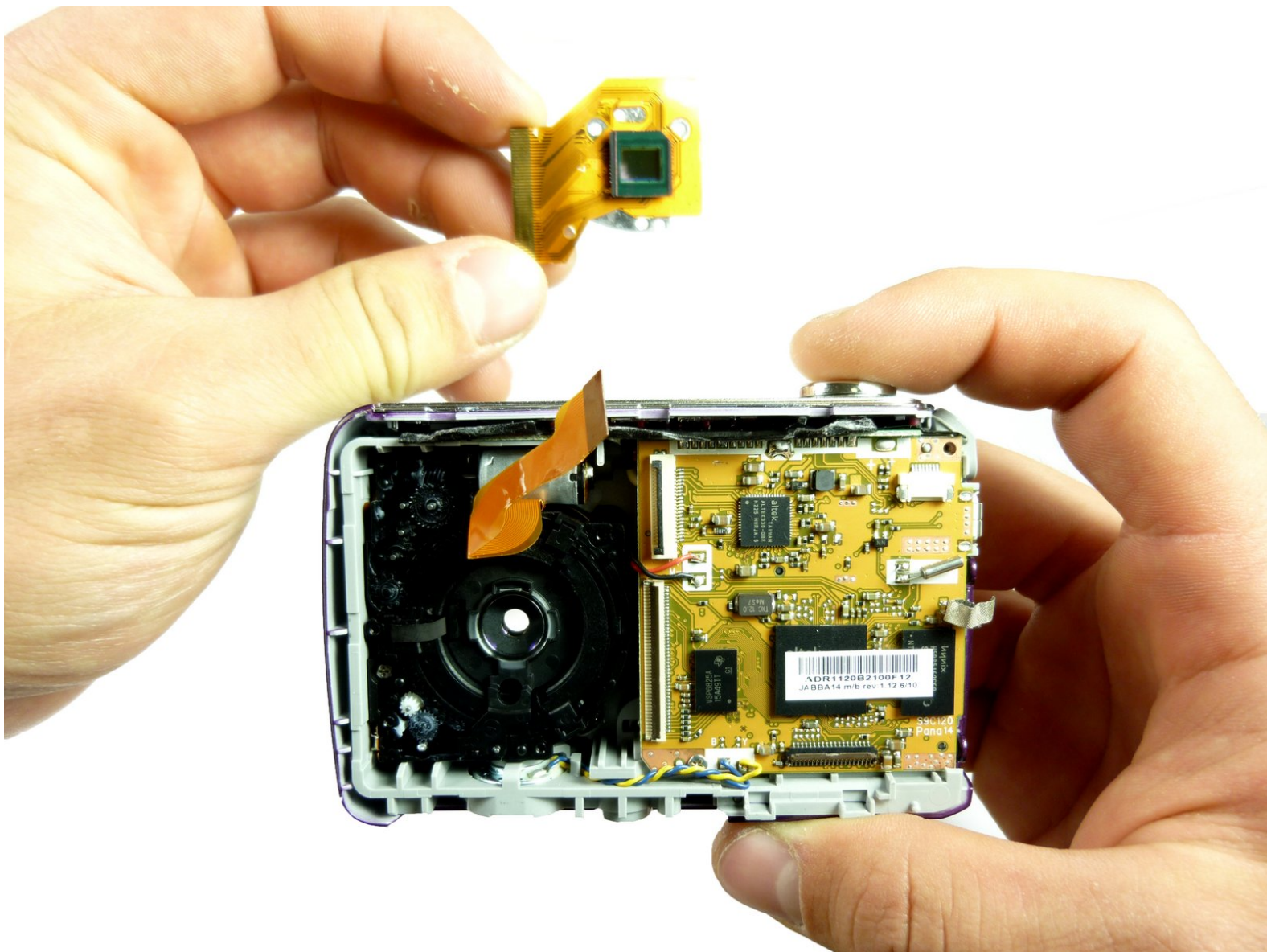




Kodak EasyShare C195 Lens Replacement

How to take out and replace the lens. You will also be able to clean the lens after it has been removed from the camera.

Written By: Alyssa



INTRODUCTION

This guide will show you how to remove the internal lens of your camera.



TOOLS:

- [Phillips #00 Screwdriver](#) (1)
-

Step 1 — LCD Screen



- To start, remove the Philips #00 4.5 mm screws on both sides of the camera.
- On the bottom, there are three Philips #00 4.5 mm screws. Two are for the front panel and one is for the back panel. To remove the back panel, take out the screws indicated in the final picture of the sequence.

Step 2

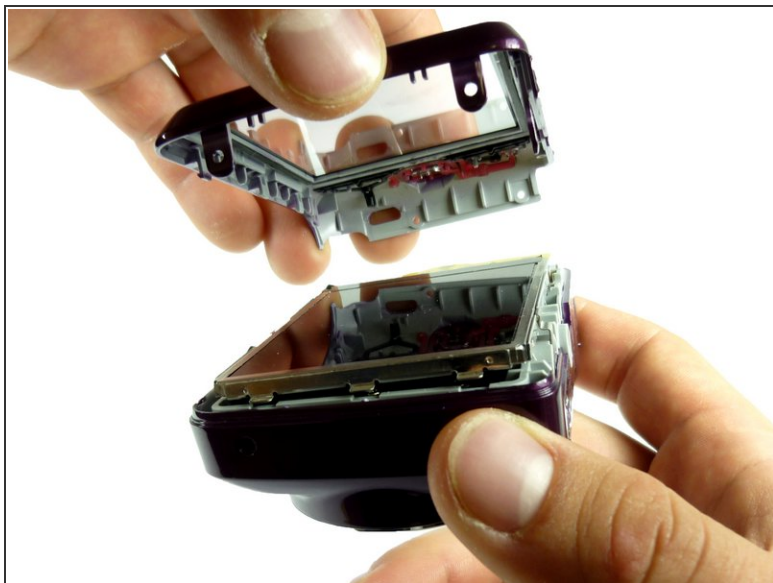


- Once all the screws are out, remove the back panel.

 The front panel does not need to be removed for replacing the LCD or the Lens.

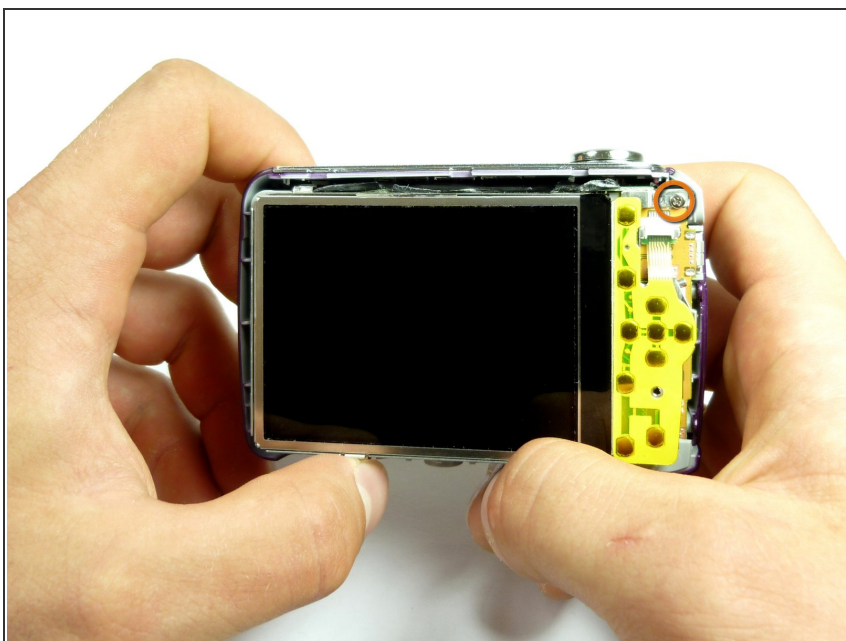
- To do this, start by removing the bottom of the panel.

Step 3



- Once the bottom part is unhooked, unhook the top, and the whole panel should come off.
- Be sure to gently pry the cover off.

Step 4



- In the top right hand corner of the inside of the camera, there is a Philips #00 4 mm screw that needs to be removed.

Step 5



- The next step is to remove the white ribbon on the upper right hand corner next to the LCD screen.
- This can be done with or without tweezers.

⚠ The screen is still attached at the bottom, so do not take the screen off yet.

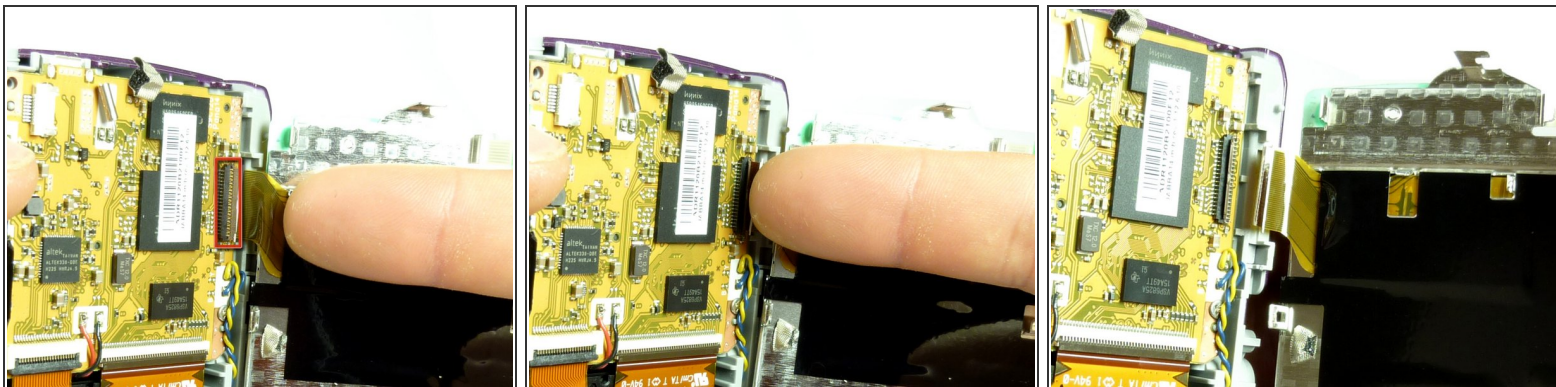
Step 6



- Carefully pry the top portion of the screen from the camera.

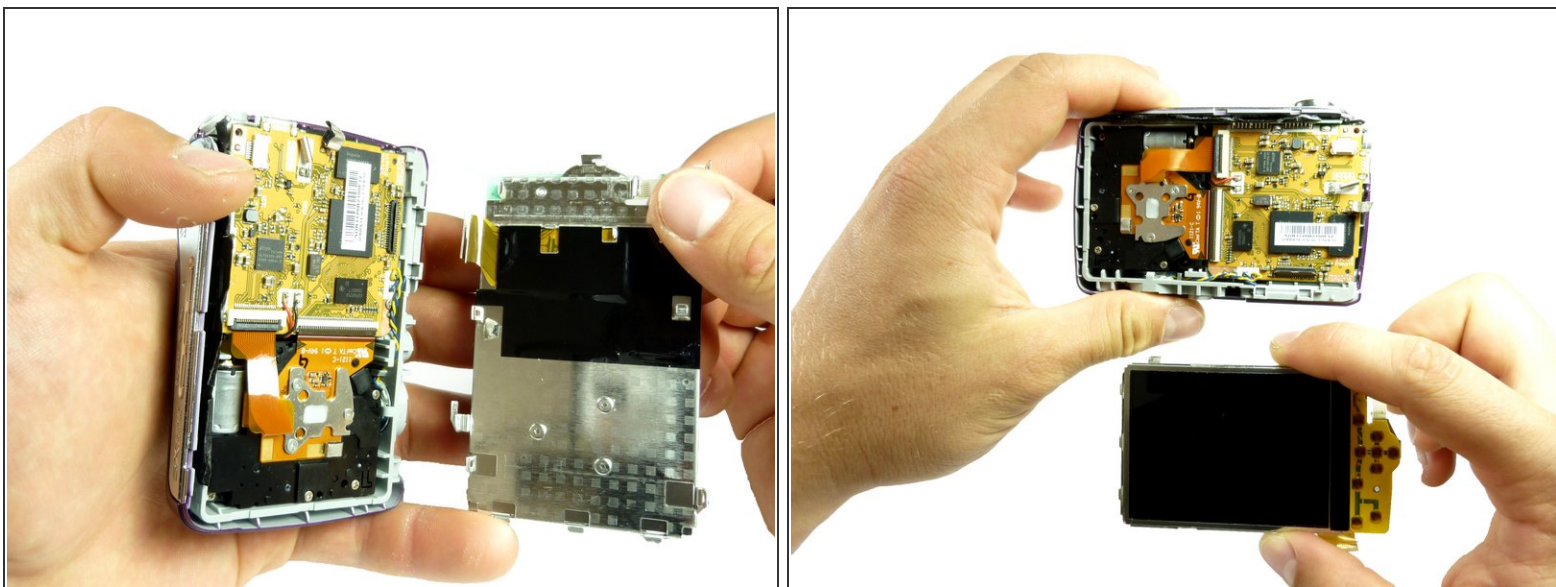
⚠ The screen is still attached to the camera via a yellow ribbon at the bottom of the camera.

Step 7



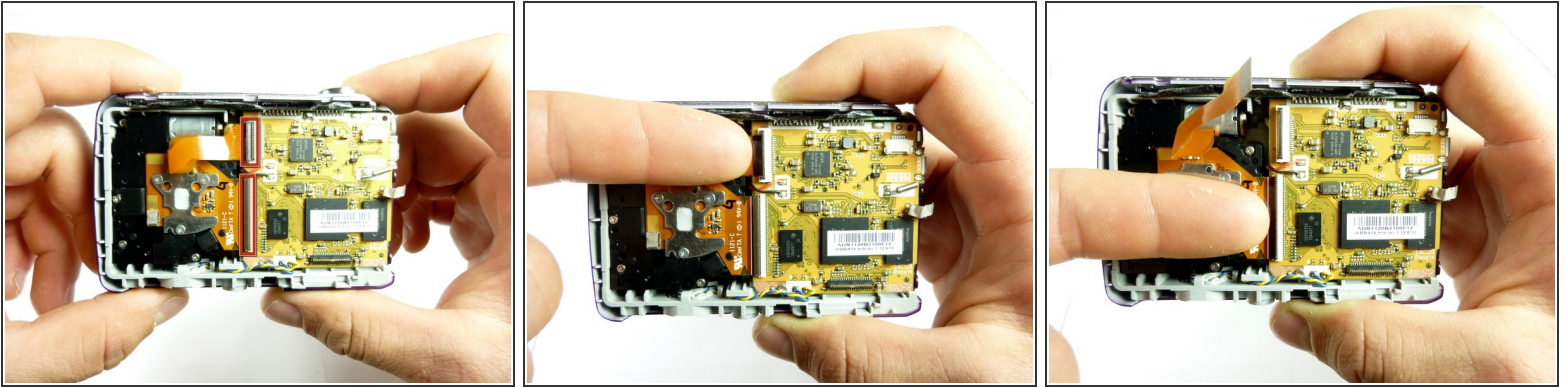
- To remove the screen completely, push down on the rectangular tab indicated in the picture.

Step 8



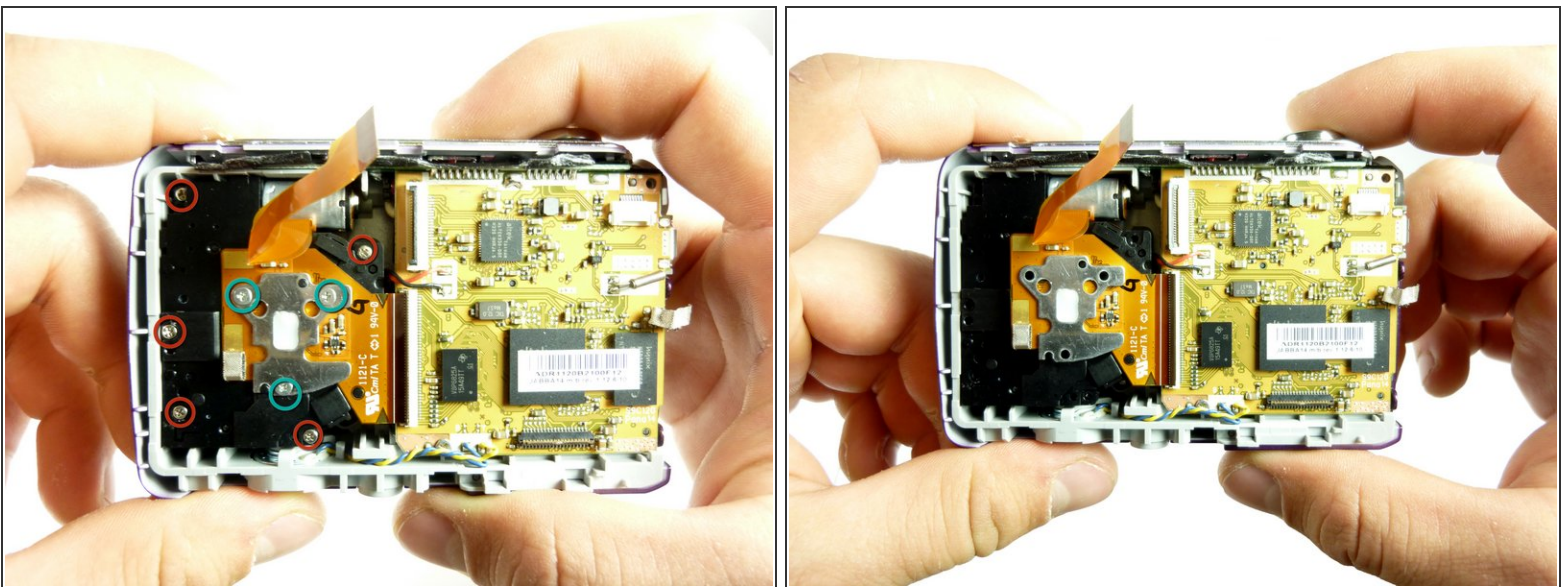
- The LCD screen is now completely removed from the rest of the camera.

Step 9 — Lens



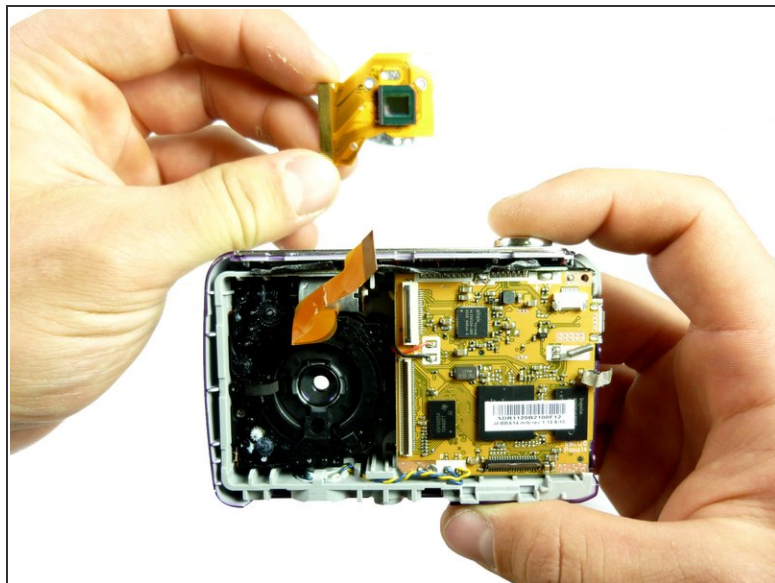
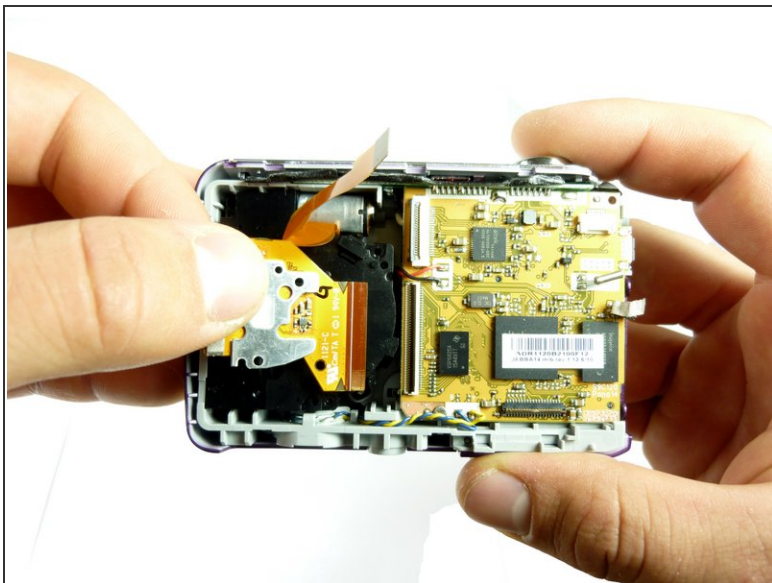
- Now that the LCD screen as been completely removed, the internal lens can be removed.
- To do this, flip the two black tabs to the left of the yellow motherboard up.

Step 10



- Once the tabs have been flipped, pull the orange tab out.
- Next, use the #00 Philips head screwdriver to remove the five 4.5 mm screws to the left of the motherboard.
- Remove the three Philips #00 3 mm screws on the silver metal plate directly behind the lens.

Step 11



- Remove the internal lens from the camera.
- The second picture shows what the camera should look like with out the internal lens attached.

To reassemble your device, follow these instructions in reverse order.