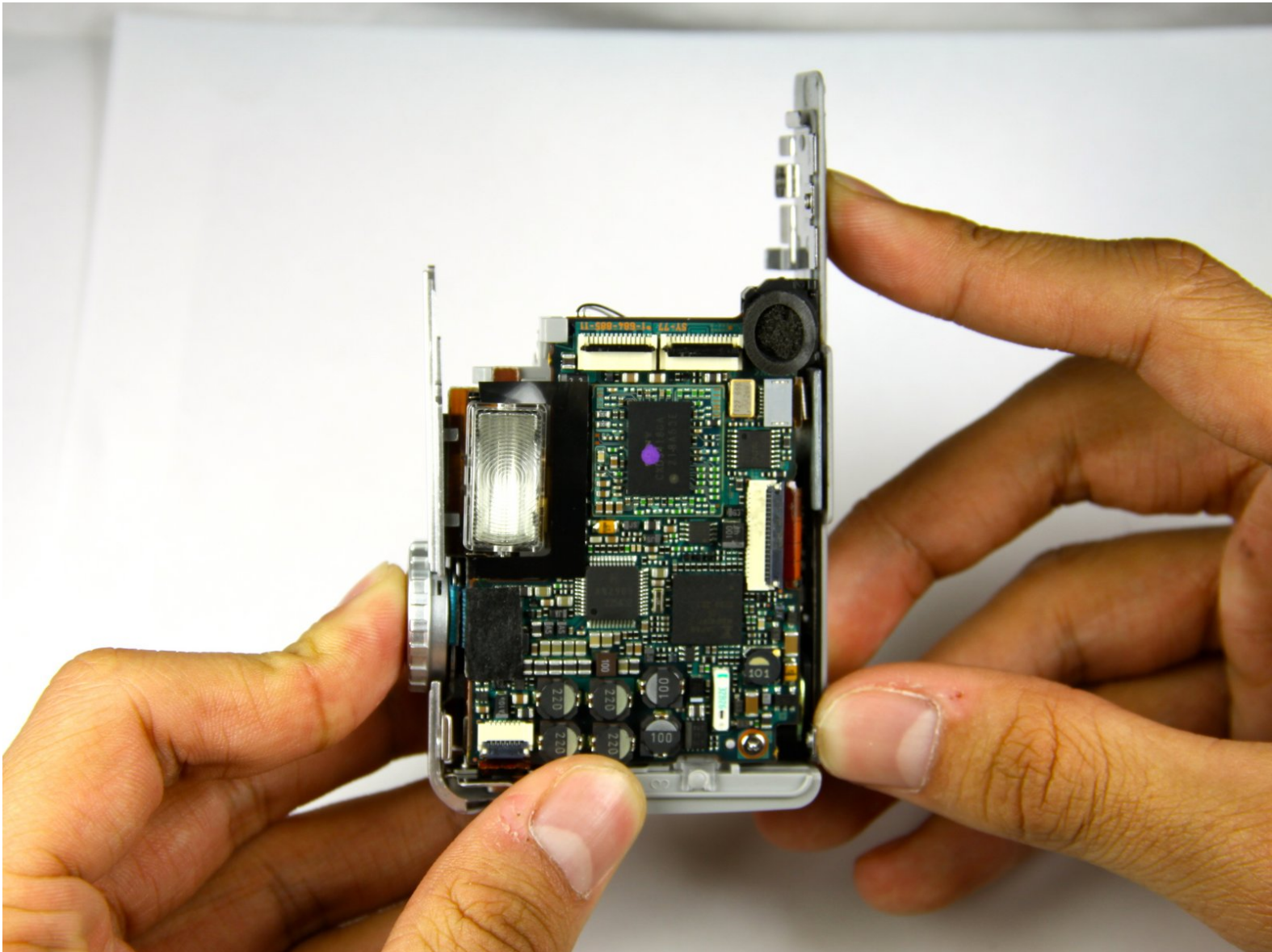




Sony Cyber-shot DSC-P9 Motherboard Replacement

Replace the camera's motherboard with this step-by-step guide.

Written By: Robert Potter





TOOLS:

- [Phillips #000 Screwdriver](#) (1)
 - [Spudger](#) (1)
-

Step 1 — Battery



- Slide the battery latch down the side of the camera with your hands.
- The latch will automatically pop open.

Step 2



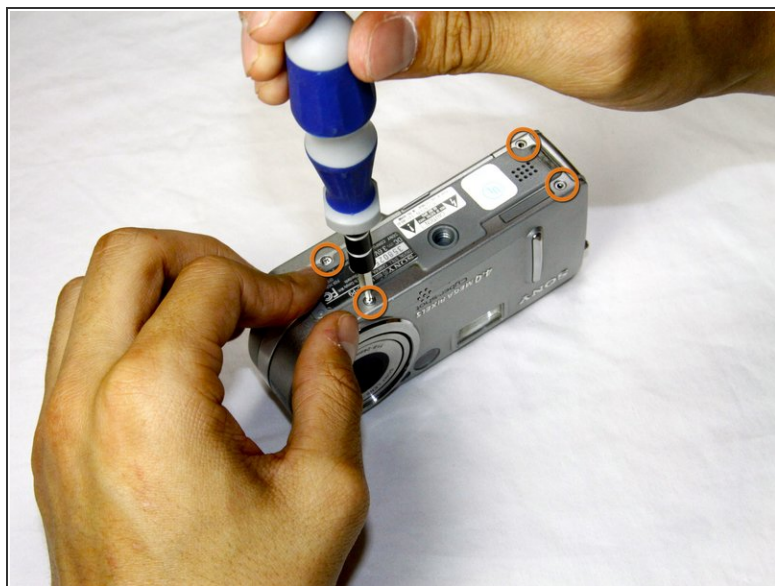
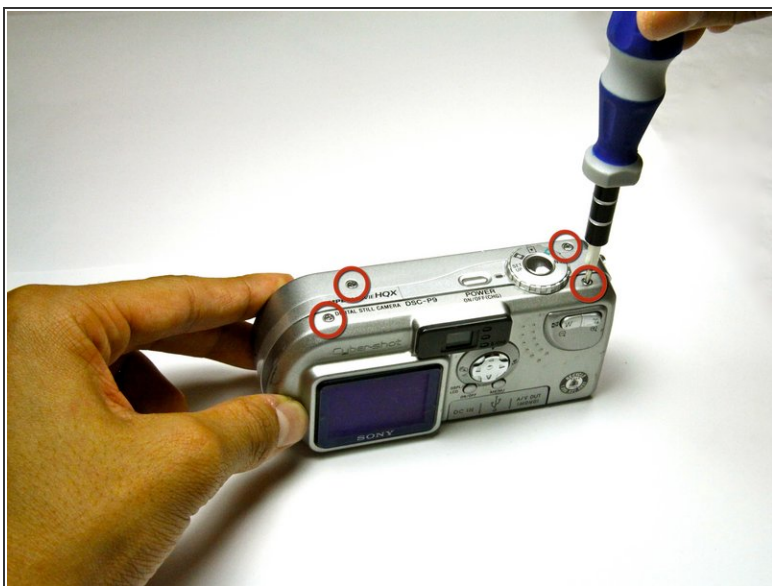
- Unlatch the clip over the battery.
- The battery will partially pop out.

Step 3



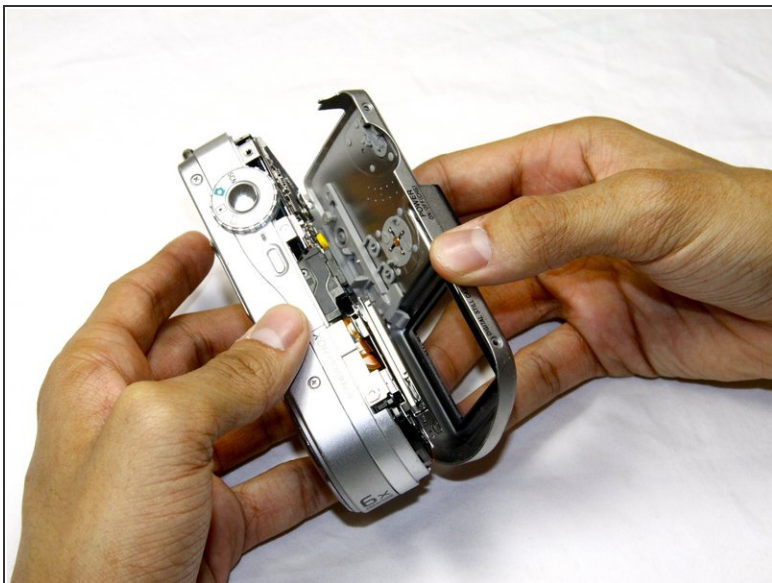
- Remove the battery from the camera.

Step 4 — Outer Casing



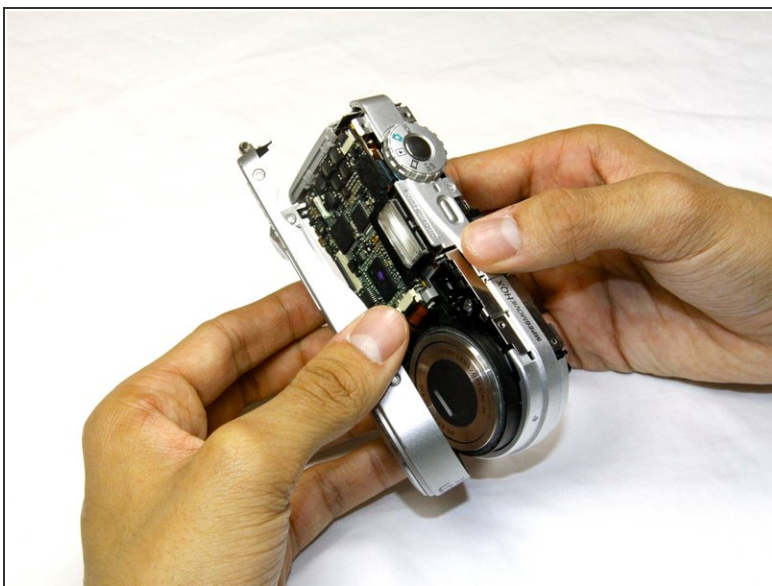
- Remove the four 3.0mm Phillips #000 screws on the top of the camera with the phillips screwdriver.
- Remove the additional four 3.0mm Phillips #000 screws on the bottom of the camera.

Step 5



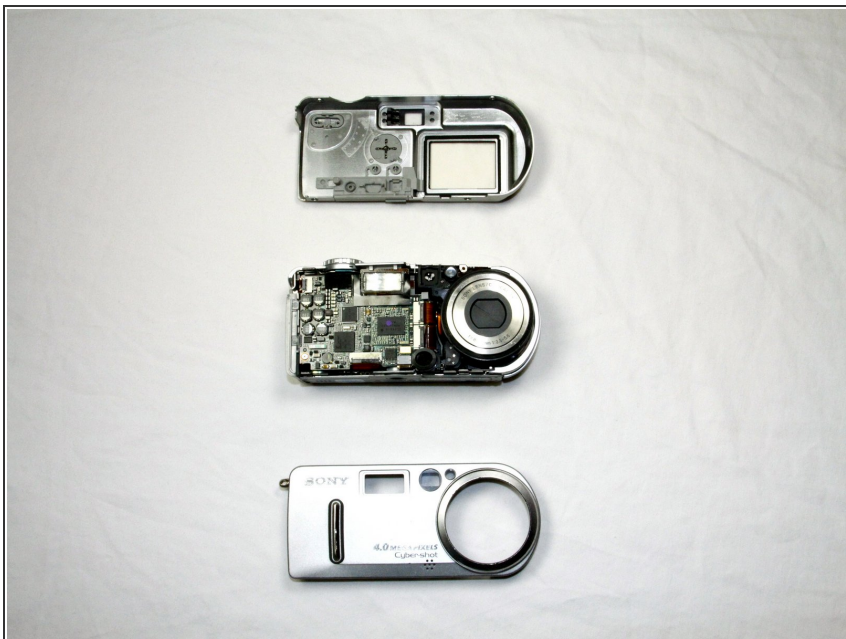
- Once the screws are removed, slowly remove the back casing from the rest of the camera.

Step 6



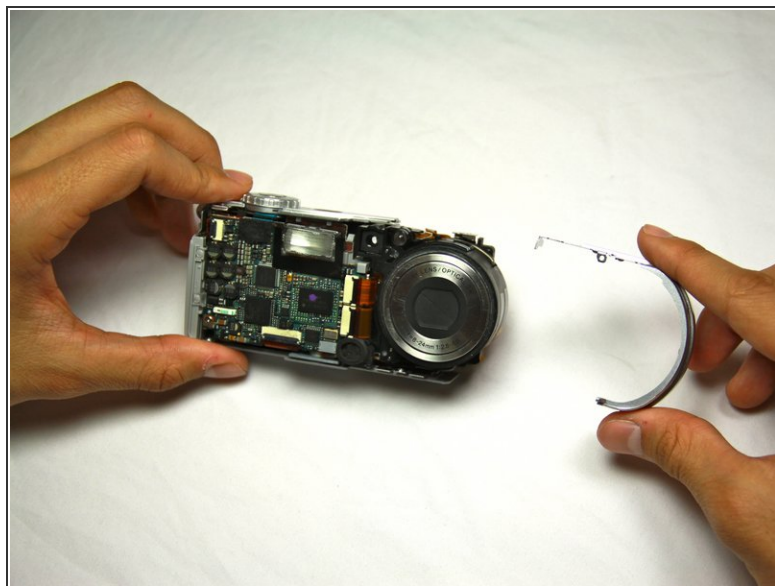
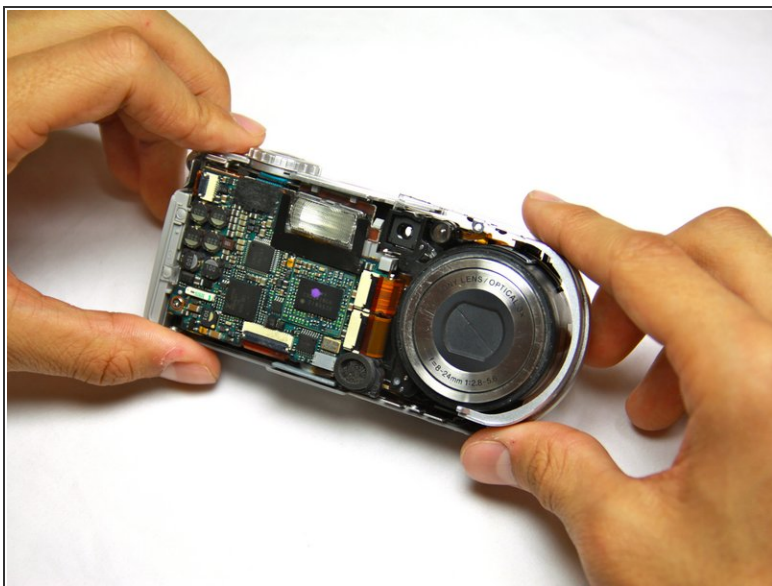
- Then, pull the front case away from the rest of the camera.

Step 7



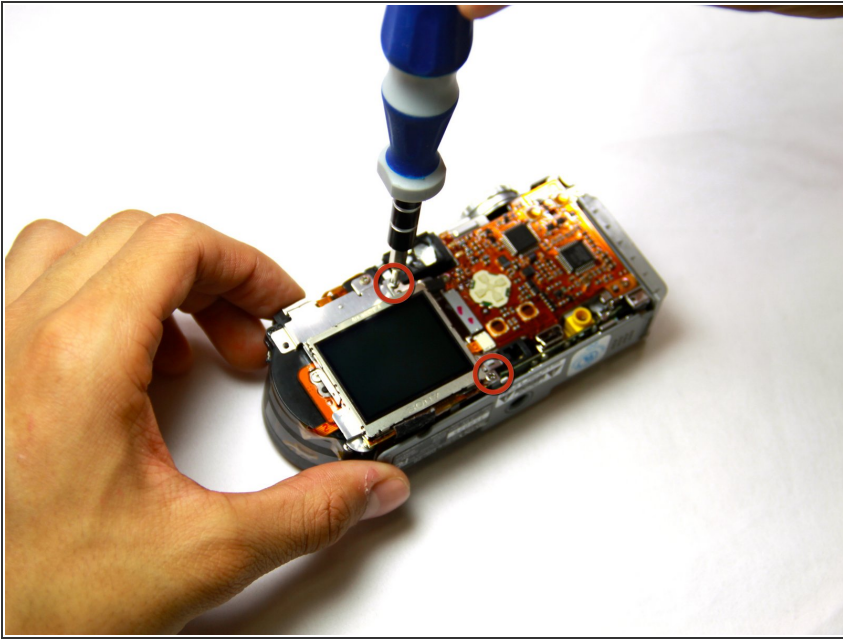
- After the casing is removed, the camera should look as shown.

Step 8 — Lens



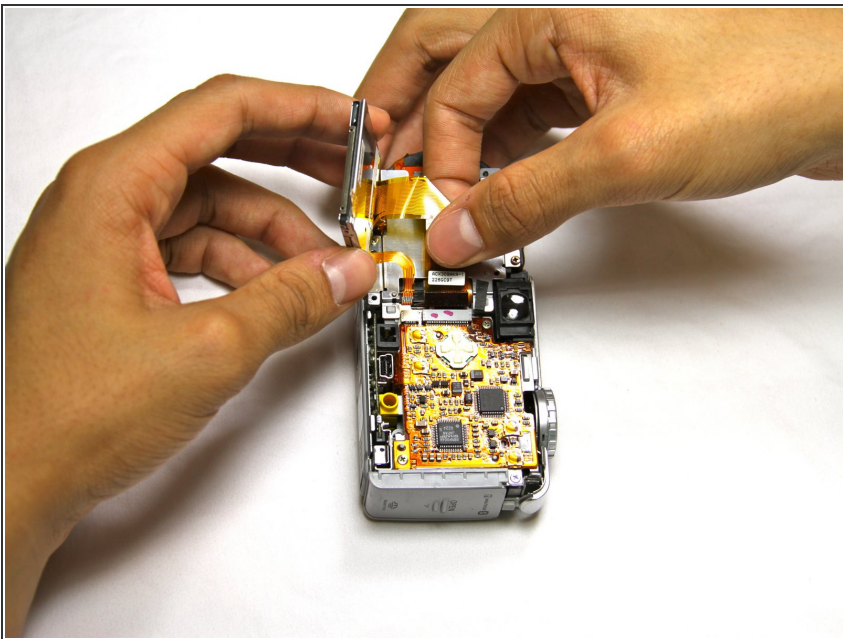
- Dislodge the round casing from the lens.
- Pull it away from the rest of the camera.

Step 9



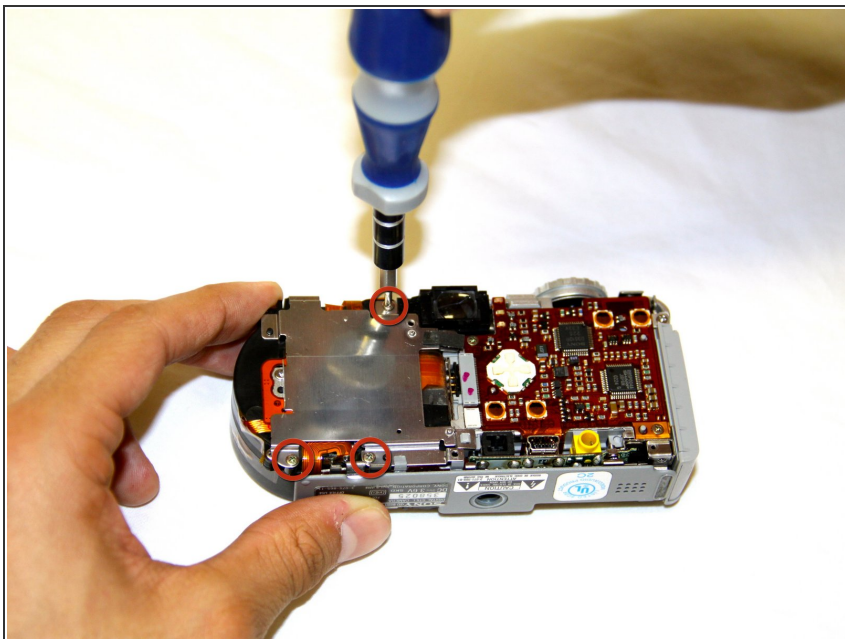
- Unscrew the two 4.0mm Phillips #000 screws from the display.

Step 10



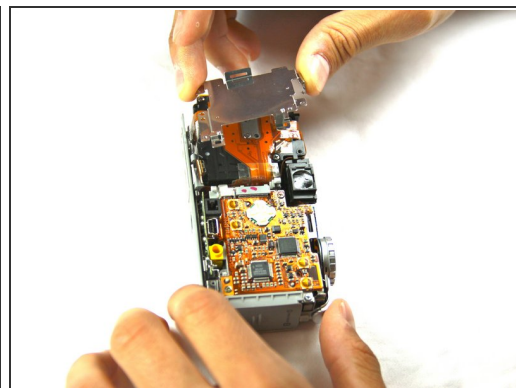
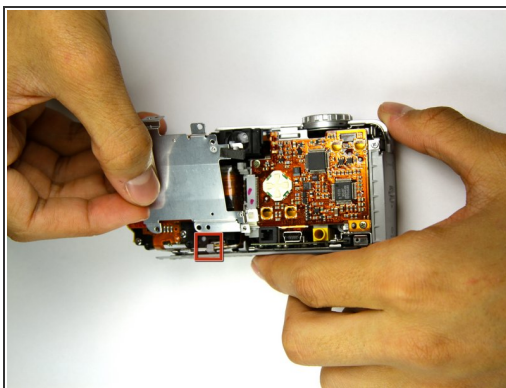
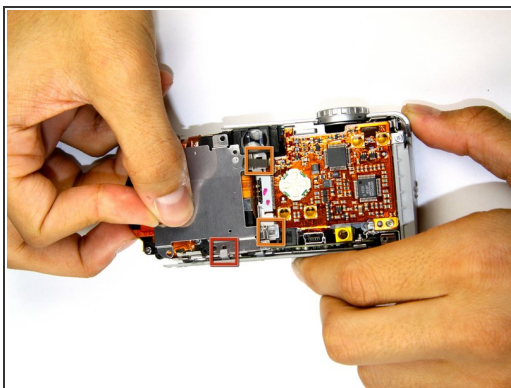
- Pull the two ribbon cables out of their slots on the back circuit board.

Step 11



- Remove the three 4.0mm Phillips #000 screws holding the back panel in place.

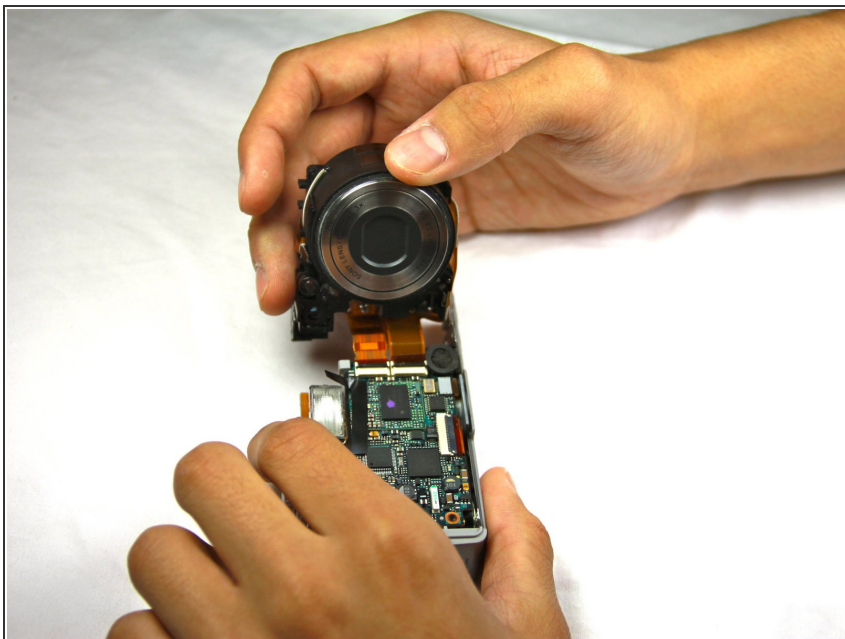
Step 12



- Work the back panel out from under the small grey clip.
- Slide the back panel off of the camera by dislodging it from the remaining clips.
- Below is a flat, orange cable connecting the lens to the motherboard.

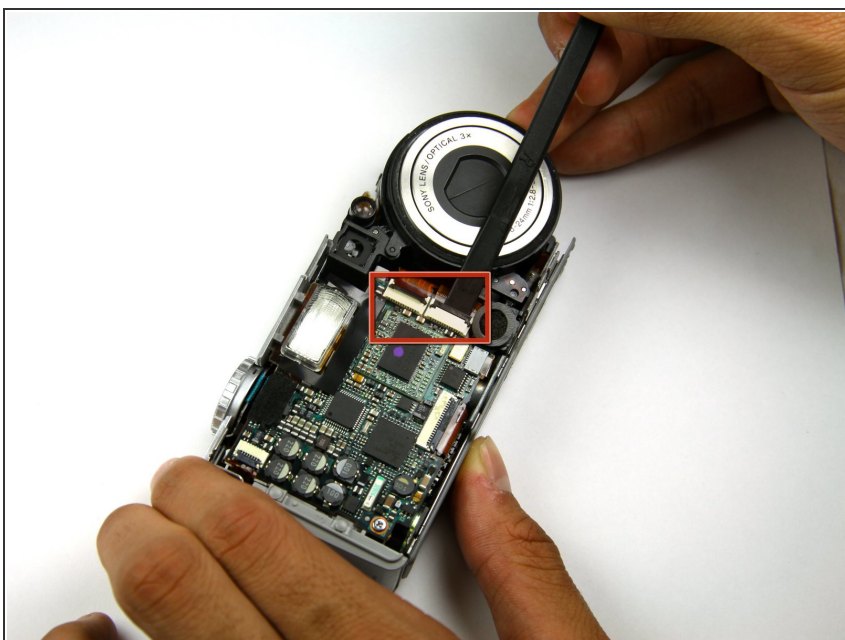
⚠ Be careful not to bend the back plate during this process.

Step 13



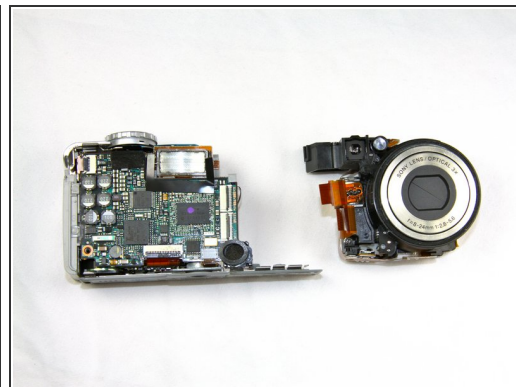
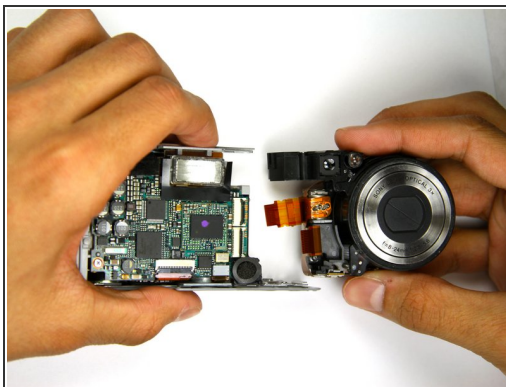
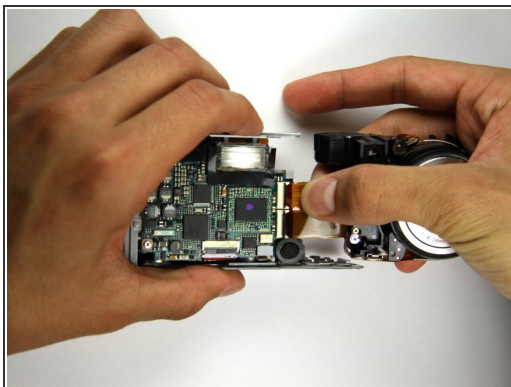
- Turn the camera over so that you can see the front of the lens.
- Two connectors link the lens to the motherboard.
- Gently bring the lens away from the camera.

Step 14



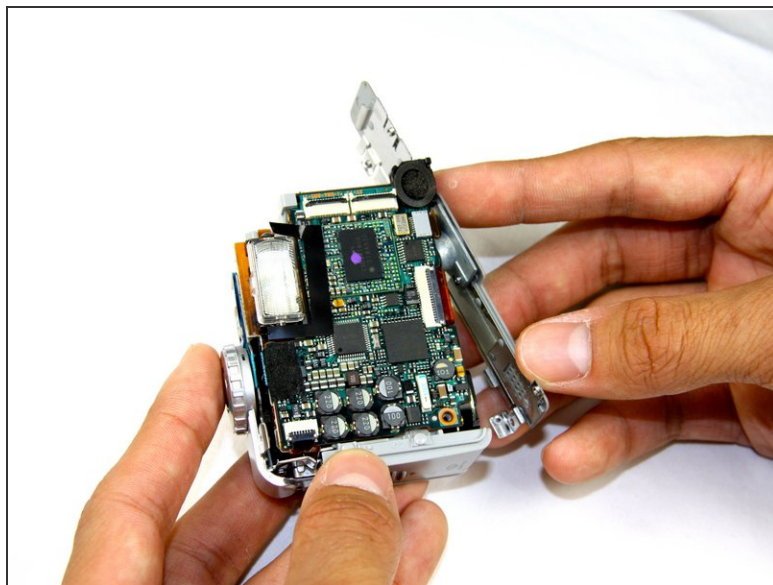
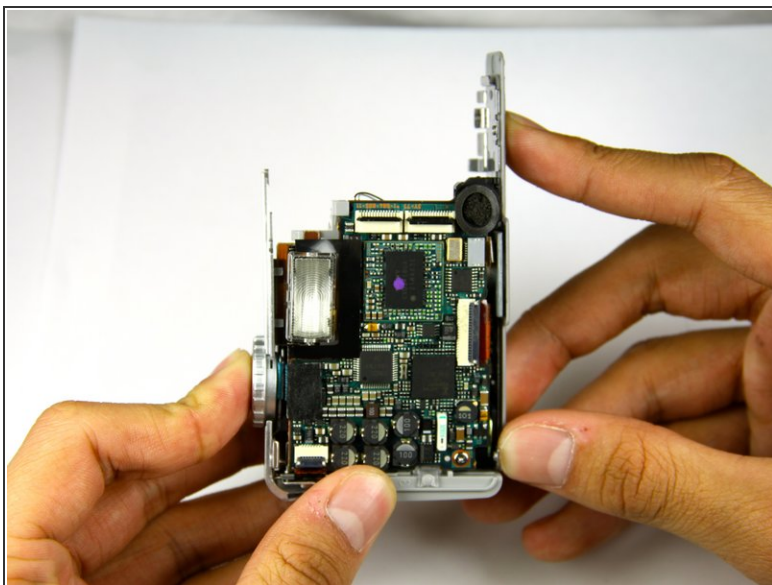
- Using the flat end of the plastic spudger tool, flip up the black tabs on the connectors.
- ⚠ Be careful not to exert too much force, as the connectors are delicate.

Step 15



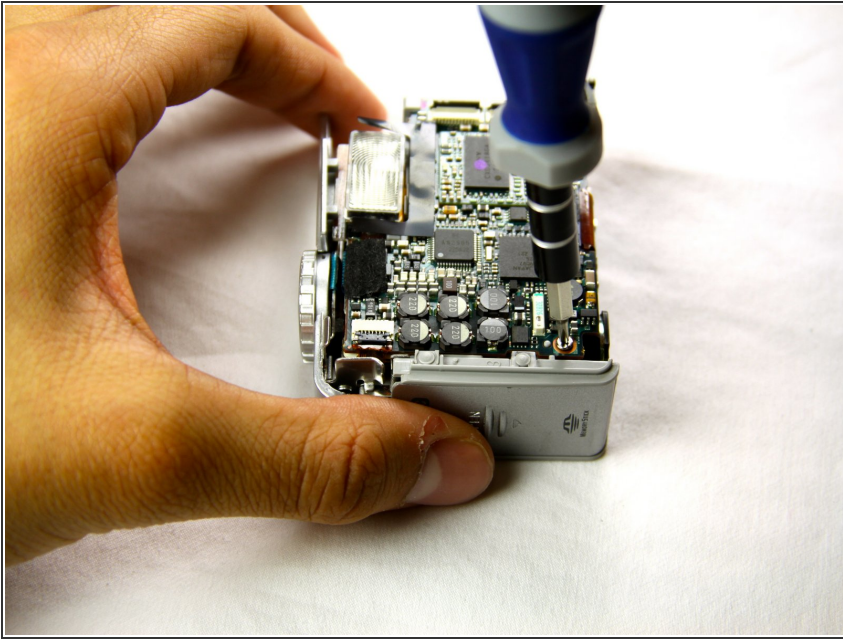
- Gently pull out the cables and move the lens away from the rest of the camera.
- You should now have two distinct, separate components.

Step 16 — Motherboard



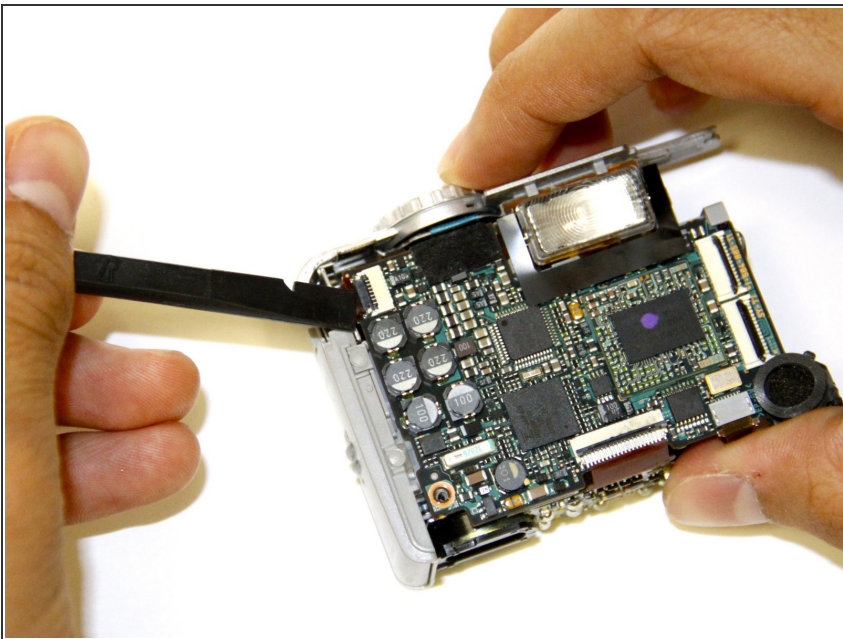
- Rotate the bottom panel upwards and pull away with your hand.

Step 17



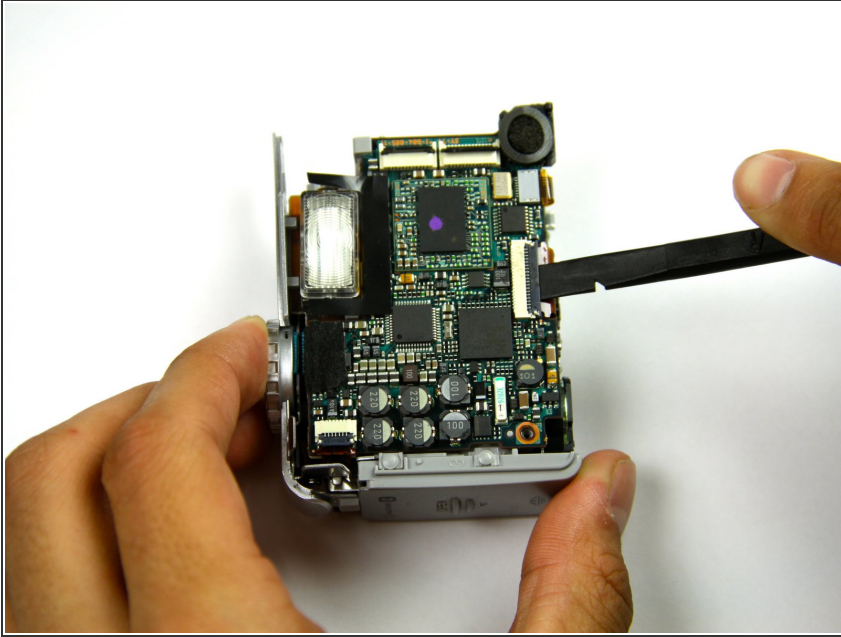
- Remove the one 2.5mm Phillips #000 screw on the bottom corner of the motherboard.

Step 18



- Lift the black tab holding the top-left ribbon cable in place with the spudger tool.
 - Remove the ribbon cable with the spudger by carefully pulling the cable directly out of the slot.
- ⚠ Take care not to rip the ribbon cable when pulling it out.

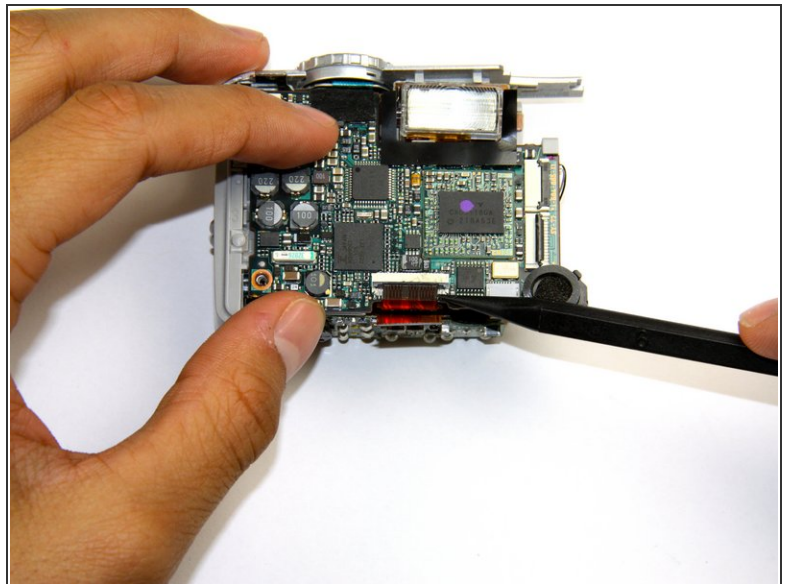
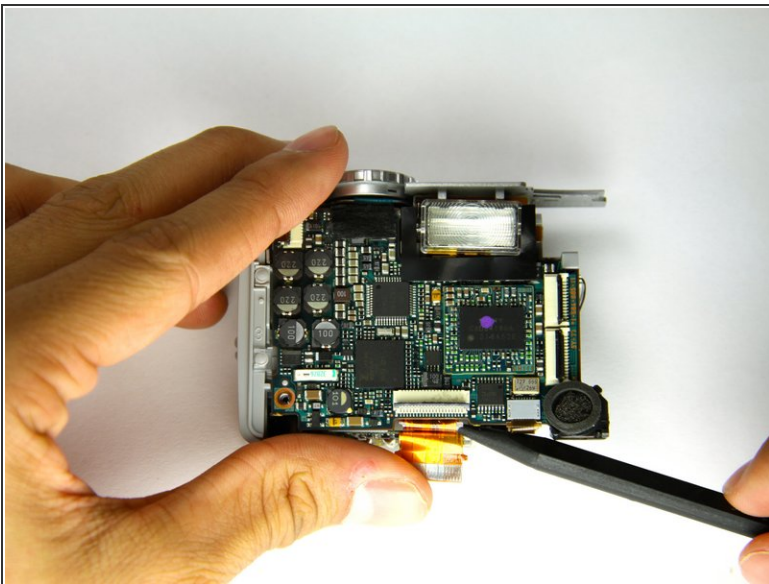
Step 19



- Lift the black tab that locks the orange ribbon cable in place.
- Remove the ribbon cable by gently pulling it out of the slot with the spudger.

⚠ Take care not to rip the ribbon cable when pulling it out, and be mindful of a second cable beneath the first.

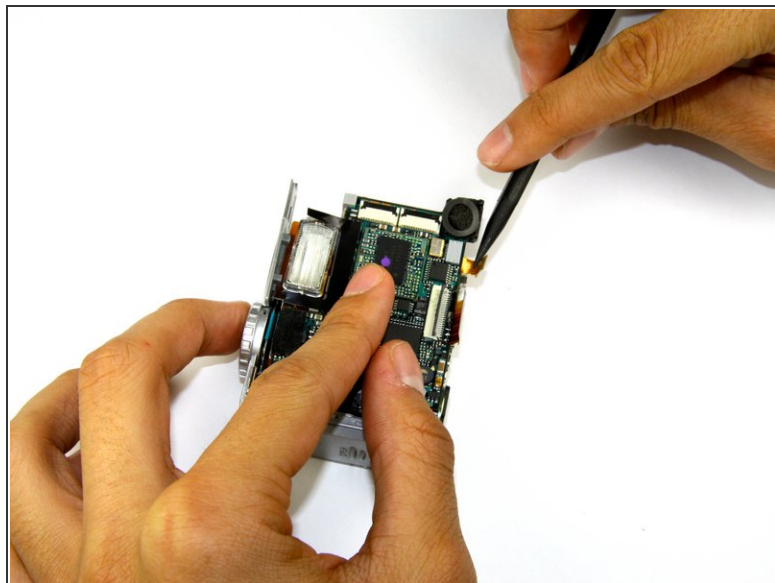
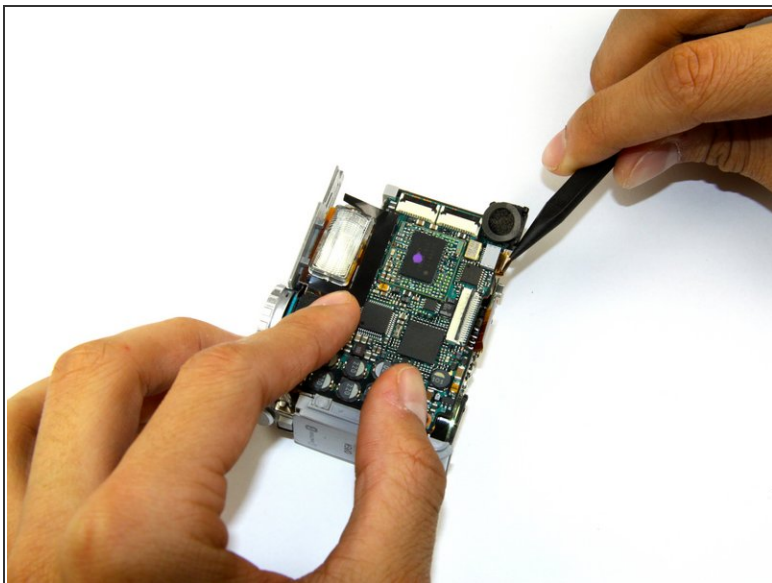
Step 20



- Remove the second ribbon cable below the first one by gently pulling it out of the slot with the spudger.

⚠ Take care not to rip the ribbon cable when pulling it out.

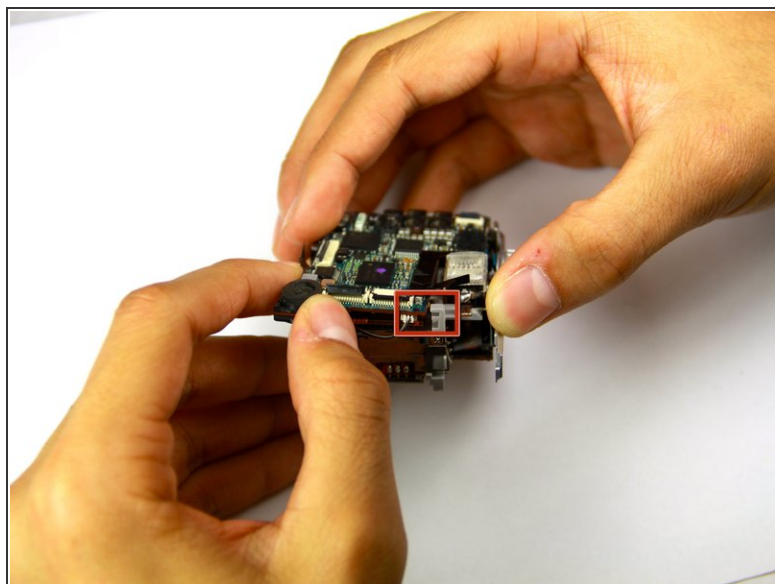
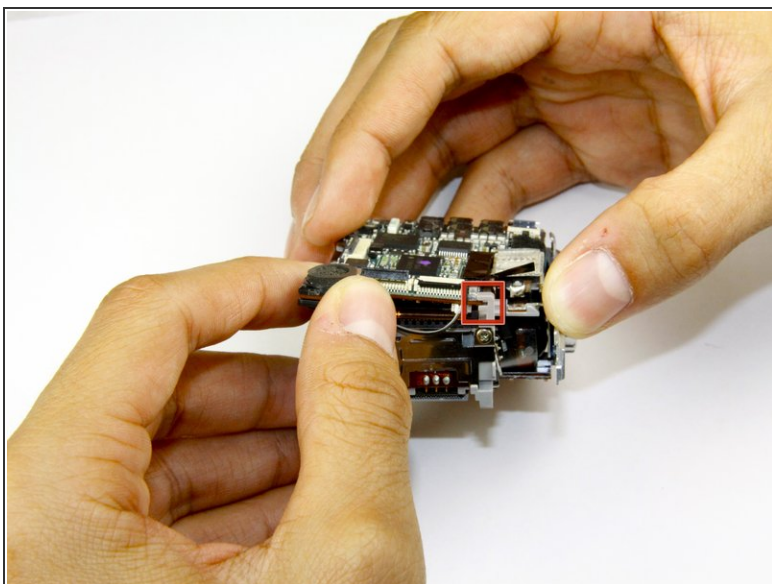
Step 21



- Remove the ribbon cable to the right of the bottom two ribbon cables with the spudger.

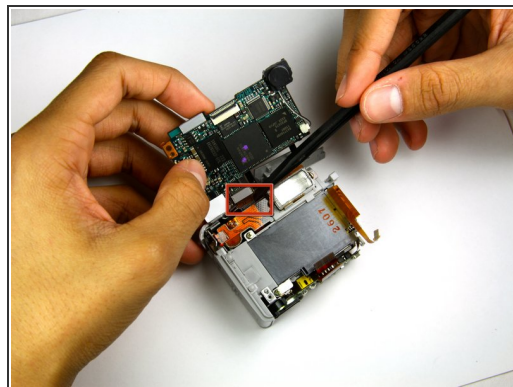
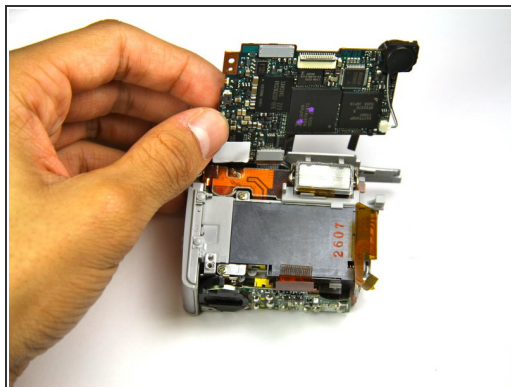
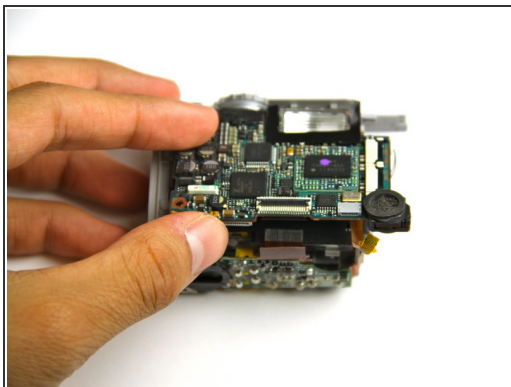
⚠ Take care not to rip the ribbon cable when pulling it out.

Step 22



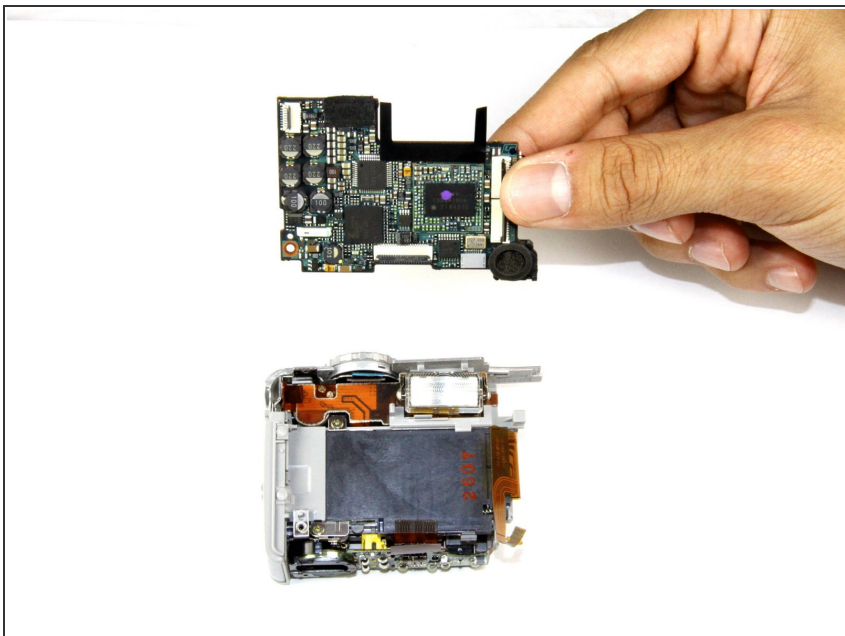
- Pull the motherboard out of the slot on the side of the camera where the lens used to be attached.

Step 23



- Lift the motherboard away from the camera.
 - Detach the final ribbon cable connecting the motherboard to the rest of the camera.
- ⚠ Take care not to rip the ribbon cable when pulling it out.

Step 24



- The motherboard should now be fully disconnected from the rest of the camera.

To reassemble your device, follow these instructions in reverse order.