



# Samsung Galaxy A5 (2016) Battery Replacement

If your Galaxy A5 won't hold a charge you can...

Written By: Tobias Isakeit



# INTRODUCTION

If your Galaxy A5 won't hold a charge you can use this guide to replace the worn-out battery.

If your battery is swollen, [take appropriate precautions](#).

This guide involves removing the rear glass cover and the mid frame. You will need replacement adhesive to reattach the back cover to the phone.

**Before disassembling your phone, discharge the battery below 25%. The battery can catch fire and/or explode if accidentally punctured, but the chances of that happening are much lower if discharged.**

---

## TOOLS:

[iOpener](#) (1)  
[iFixit Opening Picks \(Set of 6\)](#) (1)  
[Plastic Cards](#) (1)  
[Phillips #00 Screwdriver](#) (1)  
[Jimmy](#) (1)  
[SIM Card Eject Tool](#) (1)


## PARTS:

[Tesa 61395 Double-Sided Tape](#) (1)

---

## Step 1 — Back Cover



 Start by switching off your phone.

- Take an [iOpener](#) to heat up and soften the glue behind the back cover.
- With a suction handle lift the back cover to insert an opening pick.

## Step 2



- Slide the pick up to the middle to separate the back cover from the frame.
- Insert a second opening pick and move around the right corner along the bottom and around the left corner.

## Step 3



- Take another opening pick and continue towards the top corner.
- Here you want to use one more pick for the last part at the top.

## Step 4



- Insert a [plastic card](#) at the bottom and slide it underneath the back cover.

## Step 5



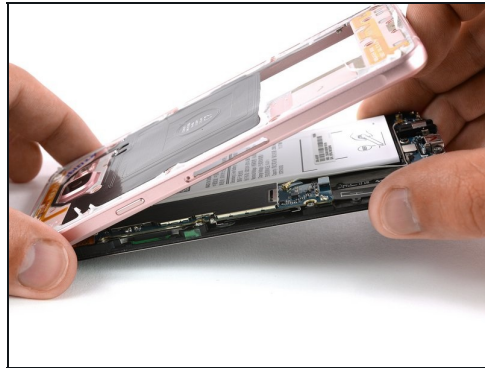
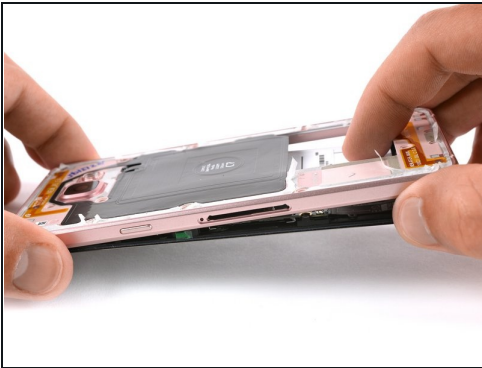
- [Heat up the back cover](#) once again so you can slide the plastic card towards the top.  
**⚠ Always take a peek underneath the back cover to not damage any parts like the NFC antenna.**
- Move the plastic card until you reach the camera bump. Now slowly lift up the back cover and finally remove it.
- ☑ Be sure to remove any residue from the glue and apply new adhesive when reassembling.

## Step 6 — Battery



- Remove the SIM card tray.
- Remove the 17 Phillips #00 (3.4 mm) screws on the midframe.

## Step 7



- Push the exposed part of the battery away from the midframe to separate the components.
- You may need the IMEI sticker on your old battery to identify your phone in the future, be sure to transfer it to the replacement battery.



## Step 8



- ⓘ There is a plastic spacer between the battery and the midframe that requires a metal prying tool to remove before the battery can be replaced. Be extremely careful not to puncture the battery.
- Use the Jimmy to carefully pry the plastic battery spacer out from the daughterboard end of the battery cavity.
  - Remove the plastic spacer from the phone.

## Step 9



- Again carefully pry up the battery and insert the tip of an opening pick on the left side.
- Now you can use a second opening pick and slide it in on the right side. Also don't insert too far to avoid damaging the LCD screen underneath.

## Step 10



- Slide with the opening picks towards the top to free the battery of the adhesive.
- Now you can remove the battery.

---

To reassemble your device, follow these instructions in reverse order. Reapply adhesive where necessary.