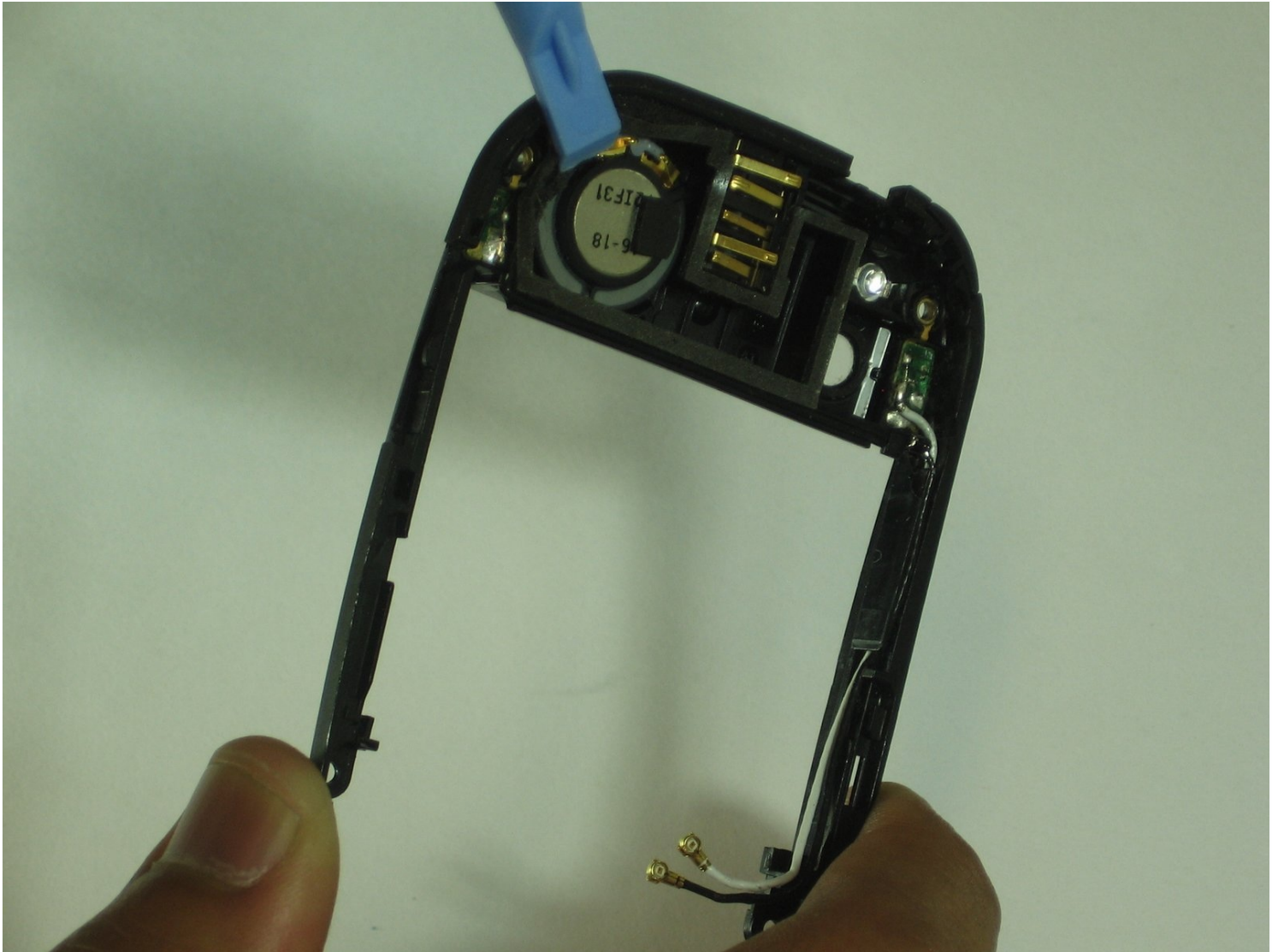




Palm Pre Speaker Replacement

Written By: noha



TOOLS:

Spudger (1)

T4 Torx Screwdriver (1)

Step 1 — Battery



- Make sure your Palm Pre is turned off before disassembling the phone.
- Snap off the back panel to reveal the battery.

Step 2



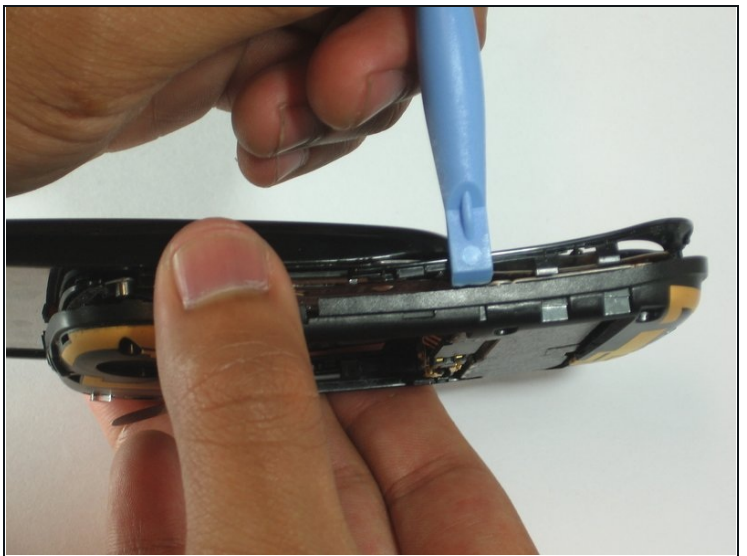
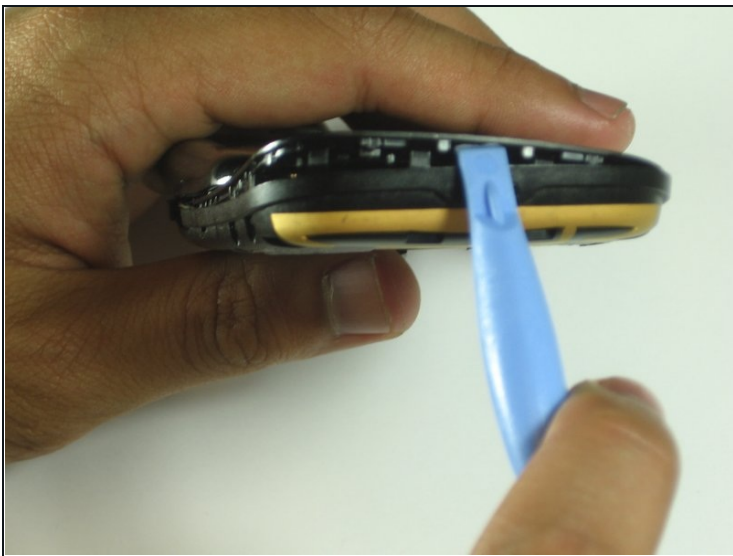
- Carefully pull up on the tab to remove the current battery.

Step 3 — Speaker



- Use the t4 screwdriver to remove all 6 of the 3.6mm long screws.

Step 4



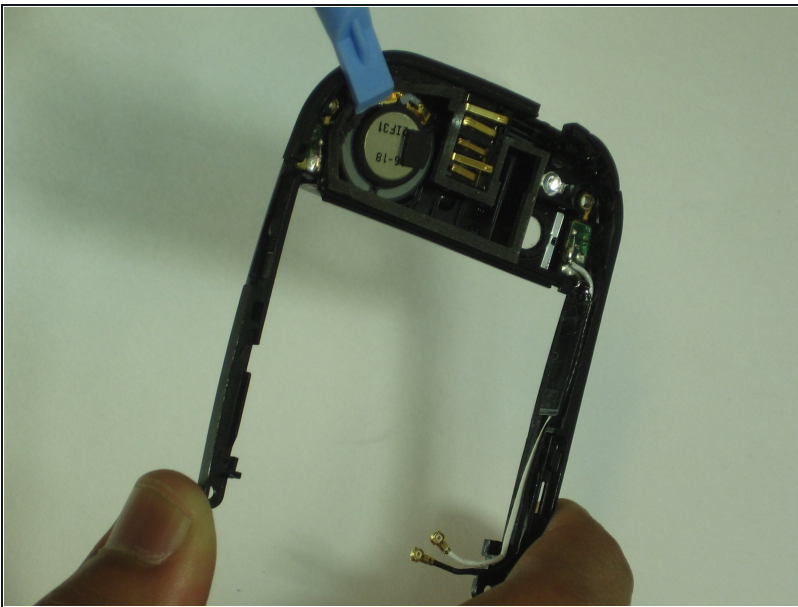
- Use the spudger to locate the crease at the bottom of the keyboard.
- Carefully work your way around the phone separating the back frame from the keyboard.

Step 5



- Use [tweezers](#) to remove the DIV and GPS antennas from the back of the keyboard.

Step 6



- Use the spudger to pry out the speaker. It is magnetically connected so do not be afraid to use the necessary force.
⚠ Make sure to take note of the orientation of the speaker for re-installation.
- Make sure not to puncture the screen on the outside of the back frame.

To reassemble your device, follow these instructions in reverse order.