



# Xbox One S Power Block Replacement

The power block's connector to the motherboard...

Written By: Erik Ramazzini



# INTRODUCTION

The power block's connector to the motherboard is difficult to disconnect by hand initially. While unnecessary, we highly recommend removing the motherboard from the silver casing first to access the power block's connector.

---

## TOOLS:

[iFixit Opening Tool](#) (1)  
[TR10 Torx Security Screwdriver](#) (1)  
[Flathead 3/32" or 2.5 mm Screwdriver](#) (1)  
[Tweezers](#) (1)

## PARTS:

[Xbox One S Power Supply](#) (1)

---

## Step 1 — Case



- Flip the Xbox One S so that the bottom of the case is facing upward.

## Step 2



- Begin by working at the case on the rear where the warranty sticker is located. Insert the plastic opening tool into the gap between the bottom of the case and the grated top side. Then find the clips in between that hold the case in place. Use the opening tool to pop the clips out. The best method is to pry the black case away from the bottom.

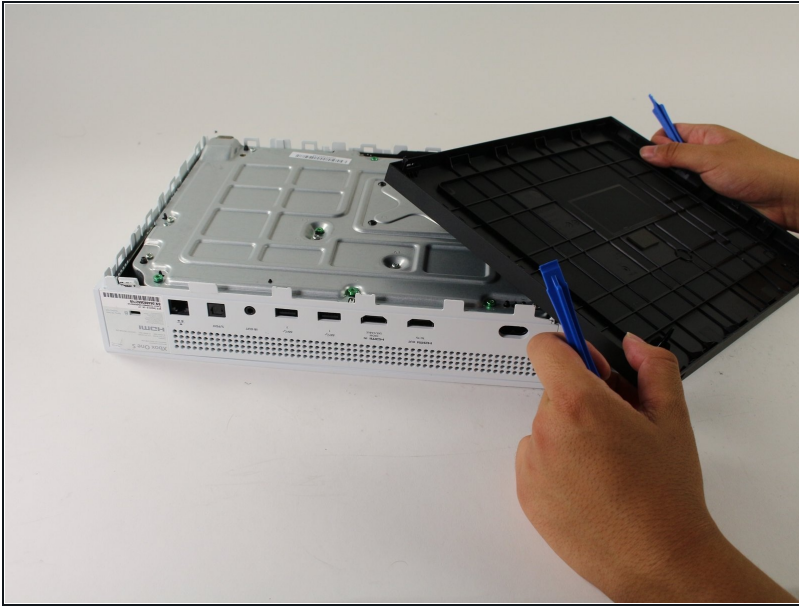
- Use the opening tool to pop the clips out. The best method is to pry the black case away from the bottom.

- ① You will hear clicking sounds when you are prying the case open. It may be fairly difficult to remove the bottom.

⚠ It's possible that the clips may break when you remove the bottom from the case.

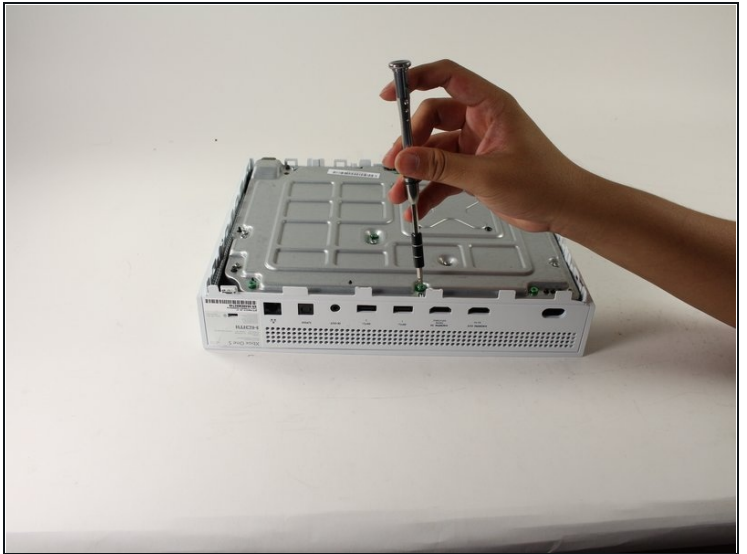
- ① We recommend starting at the back where the warranty sticker is located. Pry along the rear edge until all clips are free. From there do each side. When three sides are free start at the end of the front opposite the sync button. Be cautious and take your time and all should separate without any damage.

### Step 3



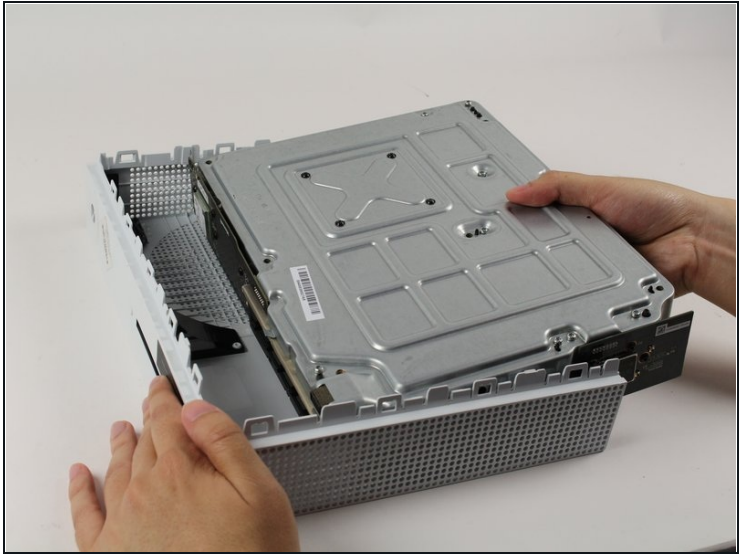
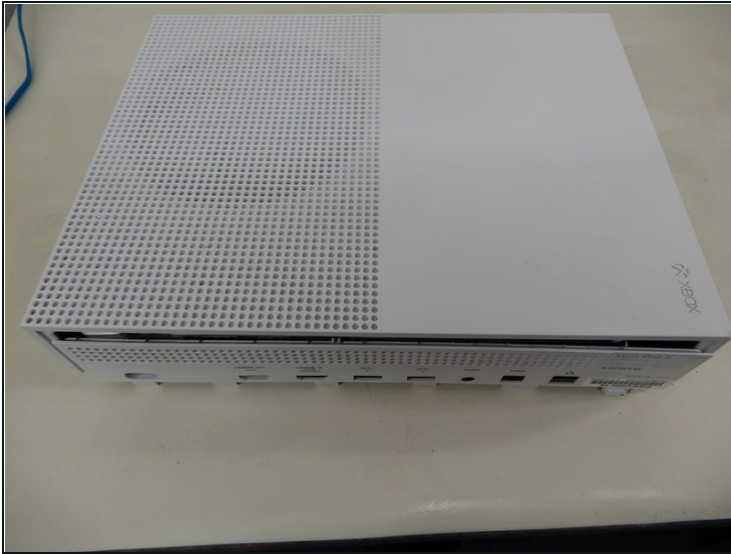
- Once all of the clips are opened, remove the bottom part of the case.

### Step 4



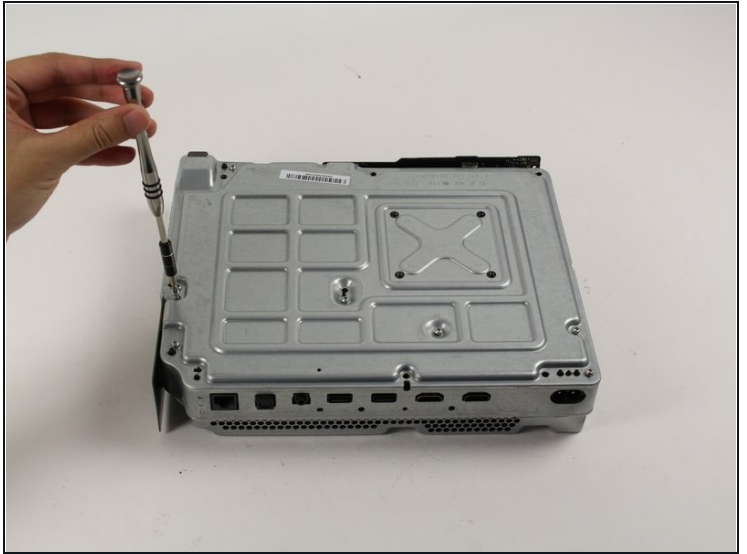
- Use a T10 Torx screwdriver to remove the six green 50 mm long screws from the metal case labeled F1 through F6.

## Step 5



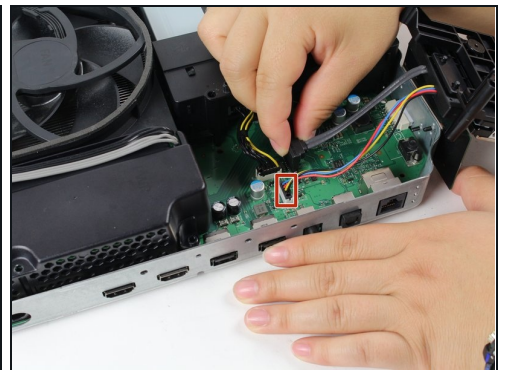
- Gently separate the interior case from the white exterior case using the appropriate method.
- Pry the white plastic sides outwards at the rear to separate from the plastic I/O shield

## Step 6 — Hard Drive Assembly



- To replace the hard drive, flip over the console and remove the two 10 mm T-10 Torx screws, C3 and C5, from the backside of the Xbox One S.
  - ① Some models may require C4 and C5.
  - ① This will allow the plastic casing surrounding the hard drive to become detached from the rest of the console.

## Step 7



- Gently disconnect the hard drive from the motherboard (at the two plastic connector bodies).

## Step 8 — Optical Drive Assembly



- To remove the optical disc drive, remove the silver 10 mm T-10 Torx screw labeled "C4."

## Step 9



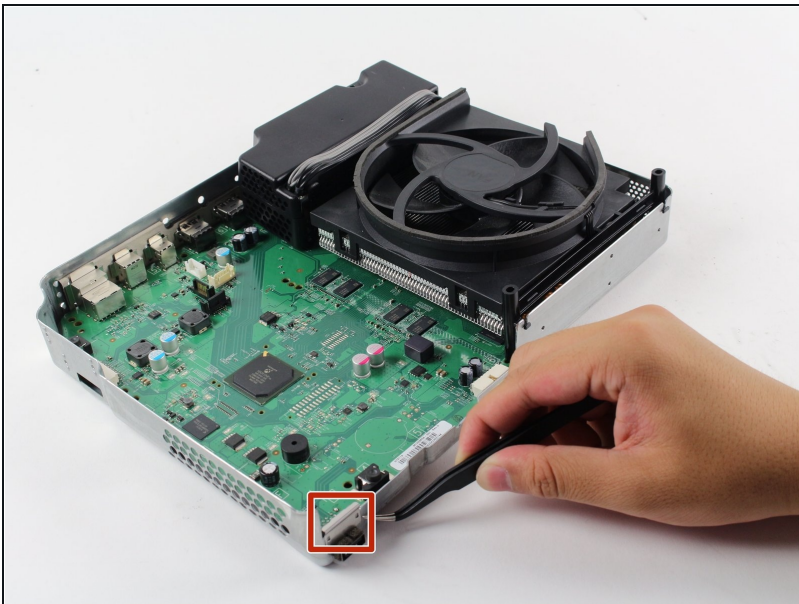
- Pull the disc drive slightly off the motherboard and disconnect the plastic connectors from the motherboard.

## Step 10 — Motherboard



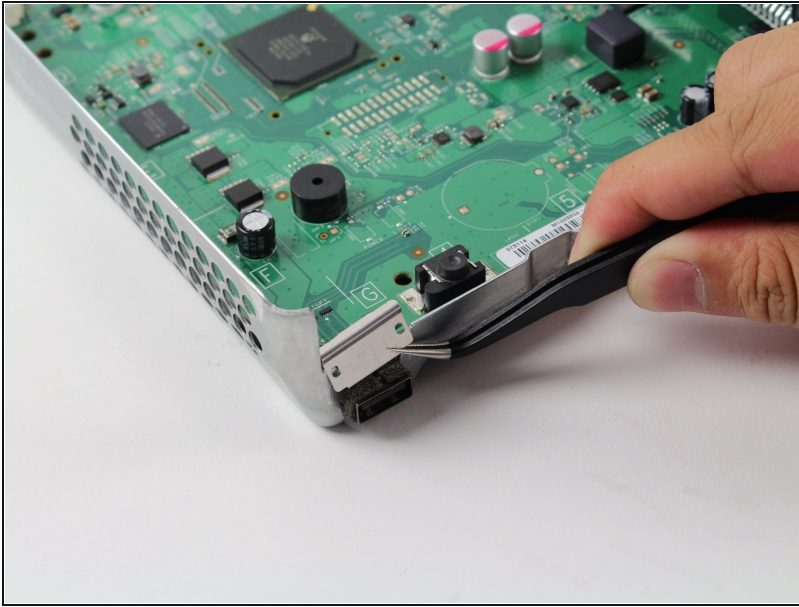
- To replace the motherboard you must remove the three silver 10 mm T-10 Torx screws labelled "C1," "C2," and "C6."
- Remove the four black 8 mm T-8 Torx screws labelled "A1," "A2," "A3," and "A4."

## Step 11



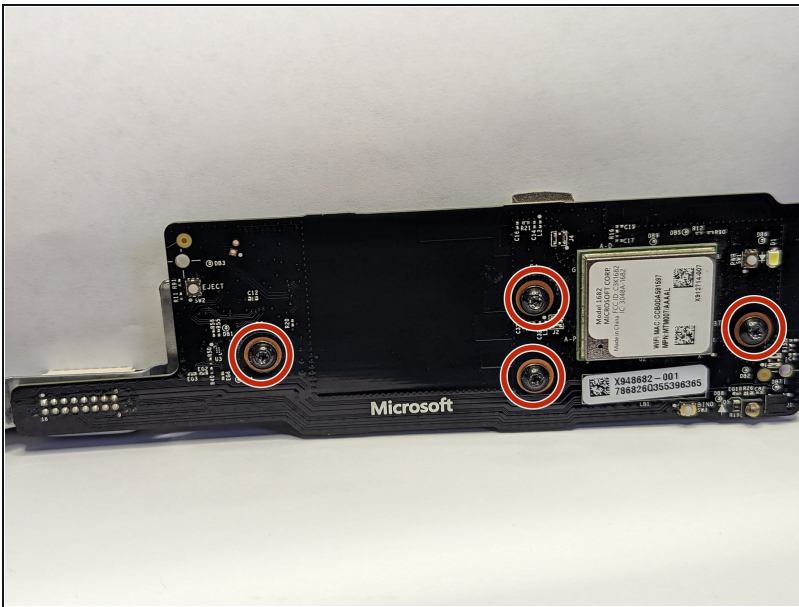
- Locate the rectangular silver clamp on the opposite corner of the power block.
- Remove the black bracket near the fan.

## Step 12



- Grab the clamp with the tweezers. Pull the clamp upward, away from the silver casing. Jiggle it back and forth like a tooth if necessary.
- ⓘ It's okay to apply a little bit of force here to get the clamp off the silver casing. The metal is bendable and can be bent/clamped back on.

## Step 13 — Remove Wifi antenna



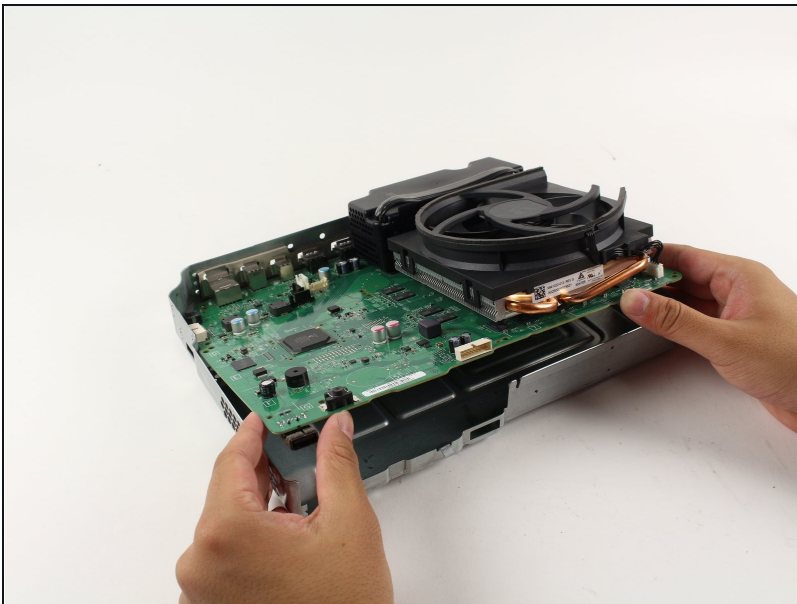
- Remove the four black 8 mm T-9 Torx screws labeled "E1," "E2," "E3," and "E4."

## Step 14 — Remove Mediatek board



- Remove the three black 8 mm T-9 Torx screws labeled "D1," "D2," and "D3" to remove the Mediatek board.

## Step 15



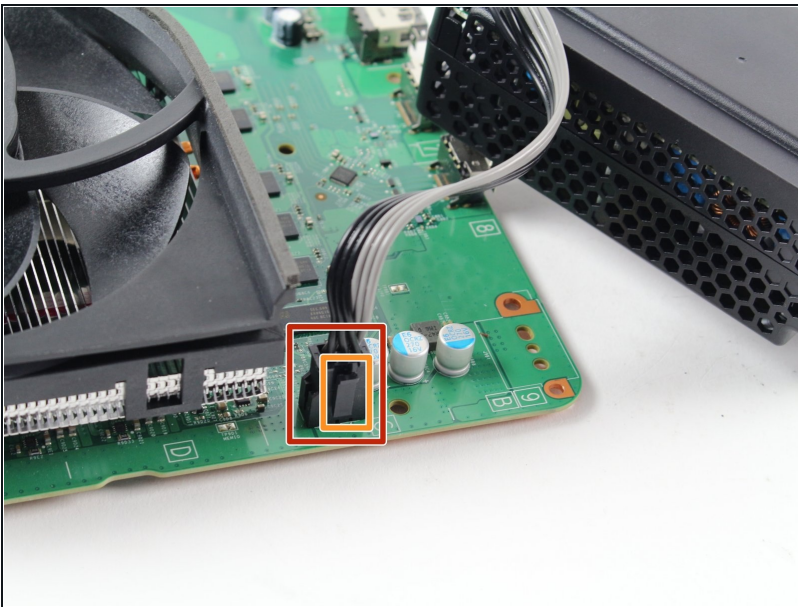
- Now that the clamp is removed, gently lift the motherboard from its edges out from the metal casing. The motherboard should come out with ease.

## Step 16 — Power Block



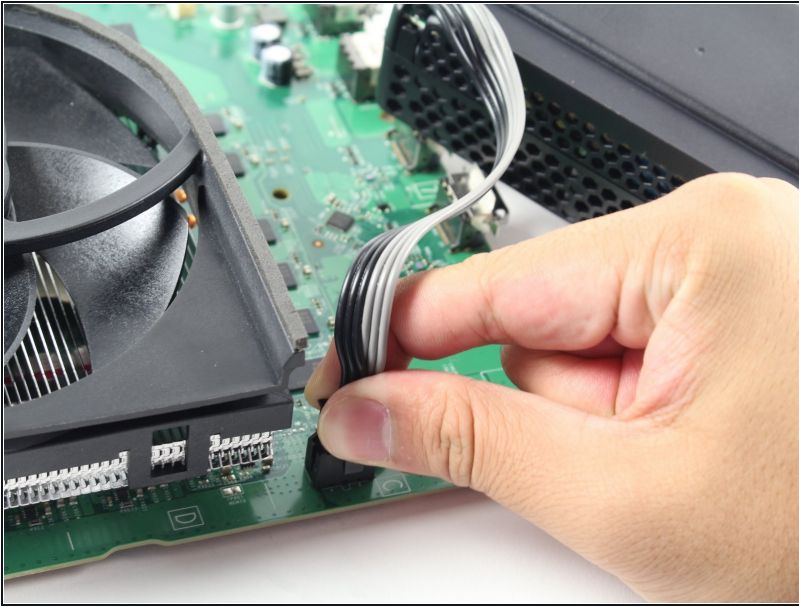
- Gently lift the power block off the motherboard

## Step 17



- Locate the black connector that joins the power block to the motherboard.
- ① The protruding rectangular part of the plastic connector, shown by the orange marker, is a locking tab.

## Step 18



- Grab the connector as shown, pinch the small black locking tab, and pull firmly upward to detach the power block from the motherboard .

---

To reassemble your device, follow these instructions in reverse order.