



iMac Intel 17" AirPort Extreme Replacement

Regain wireless connectivity and replace your...

Written By: Walter Galan



INTRODUCTION

Regain wireless connectivity and replace your inoperative AirPort Extreme card.

TOOLS:

Phillips #1 Screwdriver (1)
Plastic Cards (1)
Spudger (1)
T6 Torx Screwdriver (1)
TR8 Torx Security Screwdriver (1)

PARTS:

17" Intel iMac AirPort Extreme Card (1)

Step 1 — Access Door



- Loosen the two captive Phillips screws securing the access door to the iMac.
- Remove the access door from the iMac.

 **Before beginning the repair, unplug the computer and press and hold the power switch for 20-30 seconds, to discharge internal capacitors.**

Step 2 — Front Bezel



- Remove the following four screws:
 - Three 6 mm T8 Torx.
 - One 8 mm T8 Torx.

Step 3



- Flip your iMac over and lay it stand-side down on a flat surface.
- To lift the front bezel off the iMac, simultaneously:
 - Use your thumbs to press in the RAM arms and hold the iMac down.
 - Use your index fingers to pull the small bridge of material on the front bezel toward yourself.
 - Pull the Front bezel up with your index fingers.
- Once the small bridge of material has cleared the RAM arms, lift the front bezel by its lower edge just enough to clear the bottom edge of the rear case.

Step 4



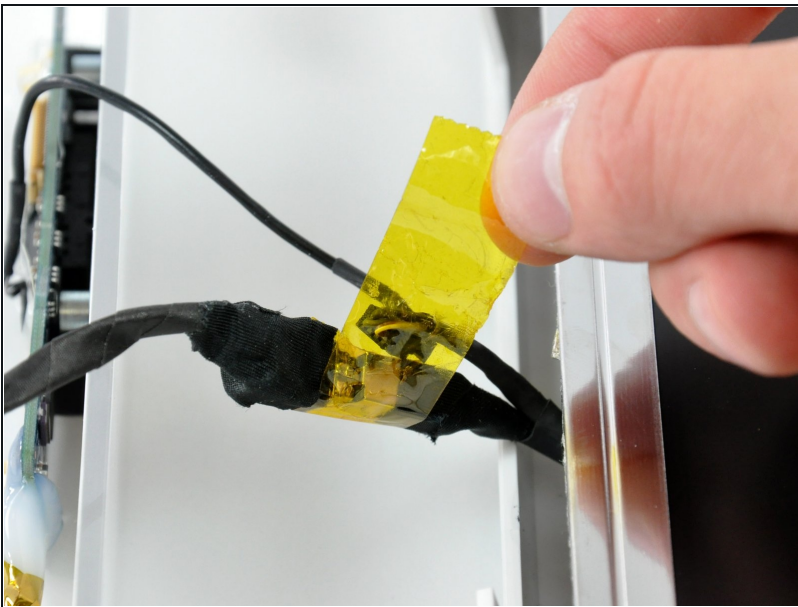
- ① Re-orient your iMac so it sits upright on the stand.
- Insert a [plastic card](#) up into the corner of the air vent slot near the top of the rear case.
- Push the card toward the top of the iMac to release the front bezel latch.
- Pull the front bezel away from the rear case.
- Repeat this process for the other side of the front bezel.
- ① It may be necessary to apply several layers of duct tape to the top of the access card to aid in releasing the latches.
- If the bezel refuses to release, try pressing the lower edge back onto the rear case and repeat this opening process.

Step 5



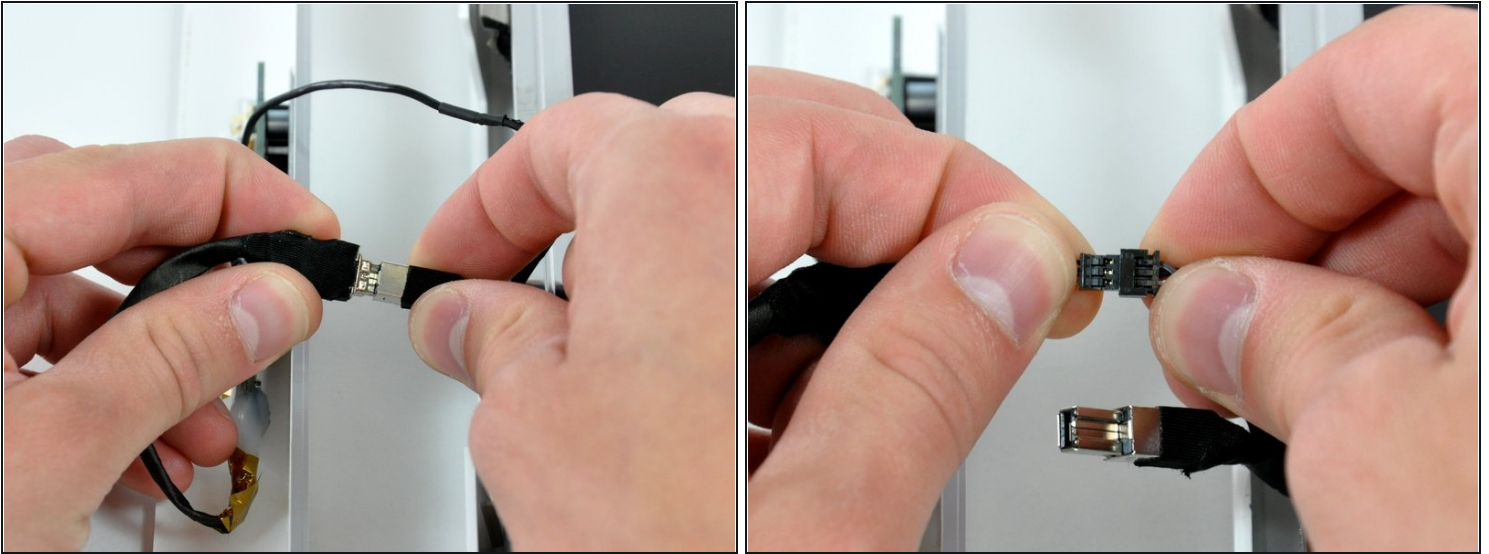
- Lay your iMac stand-side down on a table.
- Lift the front bezel from its lower edge and rotate it away from the rest of your iMac, minding the RAM arms that may get caught.
- Lay the front bezel above the rest of the iMac.

Step 6



- If necessary, remove the piece of kapton tape(it is ok to toss this) wrapped around the microphone and camera cables.

Step 7



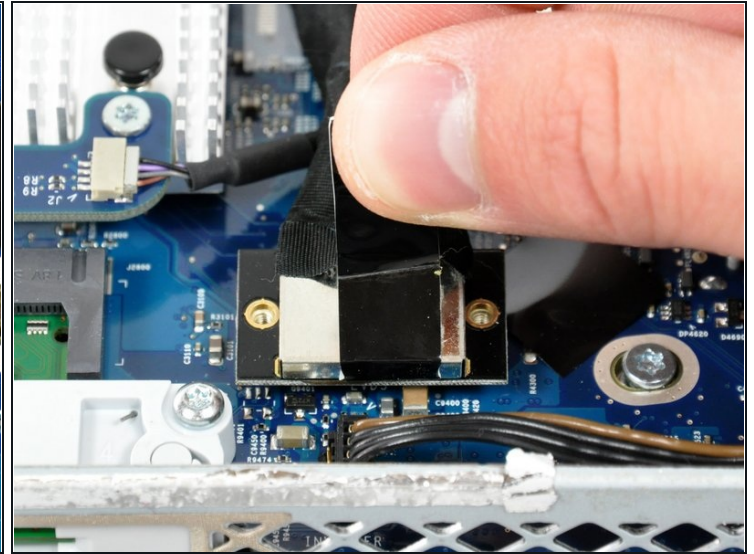
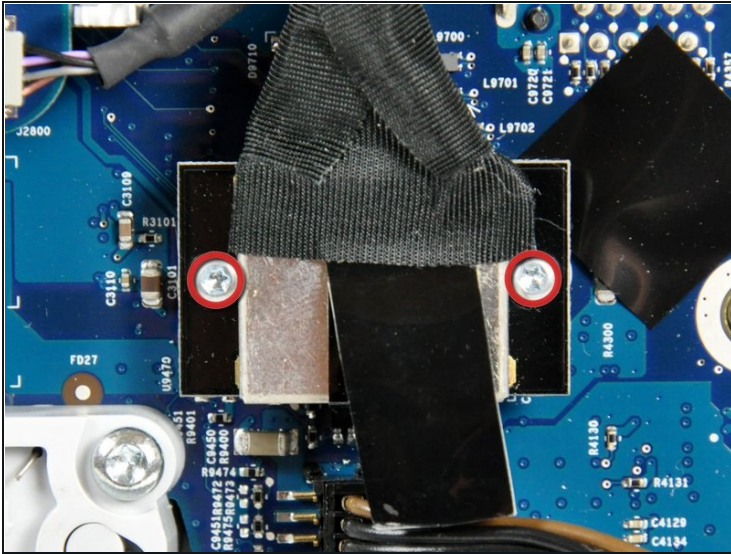
- Disconnect both the camera and microphone cables.

Step 8 — AirPort Extreme



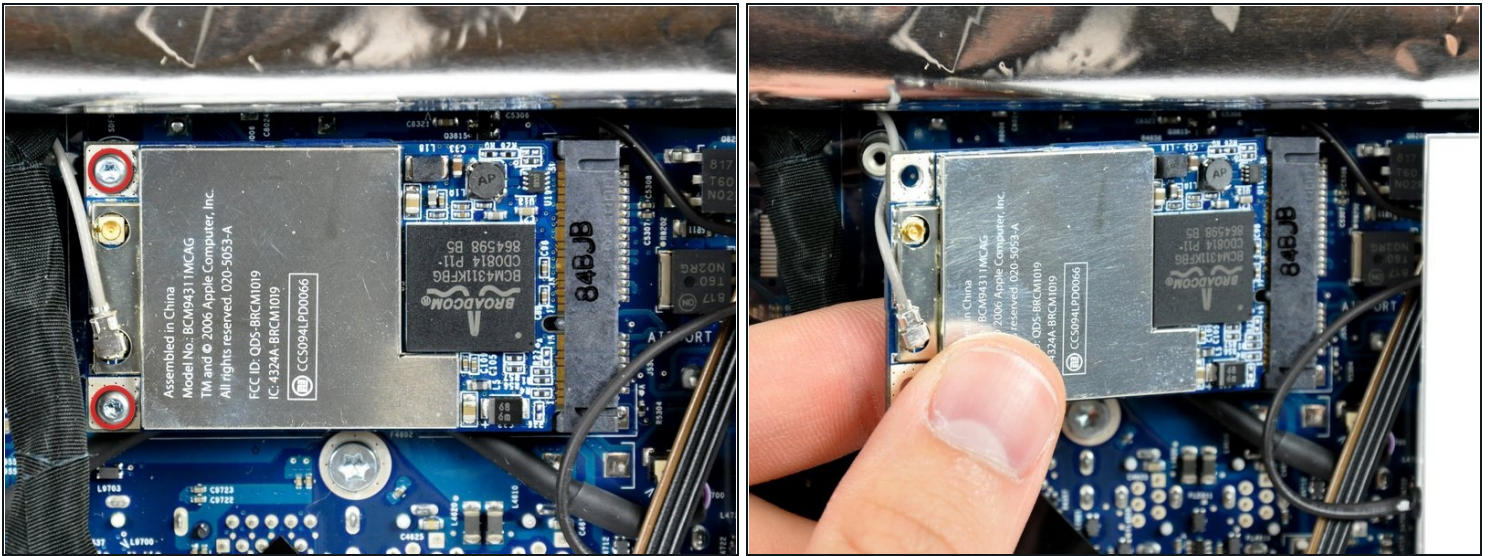
- Peel up the lower EMI shield from the rear case.
- ① It is only necessary to peel the shield up from three sides. Leave it attached to the display.
- ① We have found it helpful to tape the EMI shield against the display panel to keep it out of the way.

Step 9



- Remove the two 4.8 mm T6 Torx screws securing the display data cable to the logic board.
- Grab the display data cable connector by its black tab and pull it straight up off the logic board.

Step 10



- Remove the two 4.8 mm T6 Torx screws securing the AirPort Extreme card to the logic board.
- Lift the free end slightly and pull the AirPort Extreme card straight away from its socket.

Step 11



- Use a spudger to pry the antenna connector up off the AirPort Extreme card.

To reassemble your device, follow these instructions in reverse order.