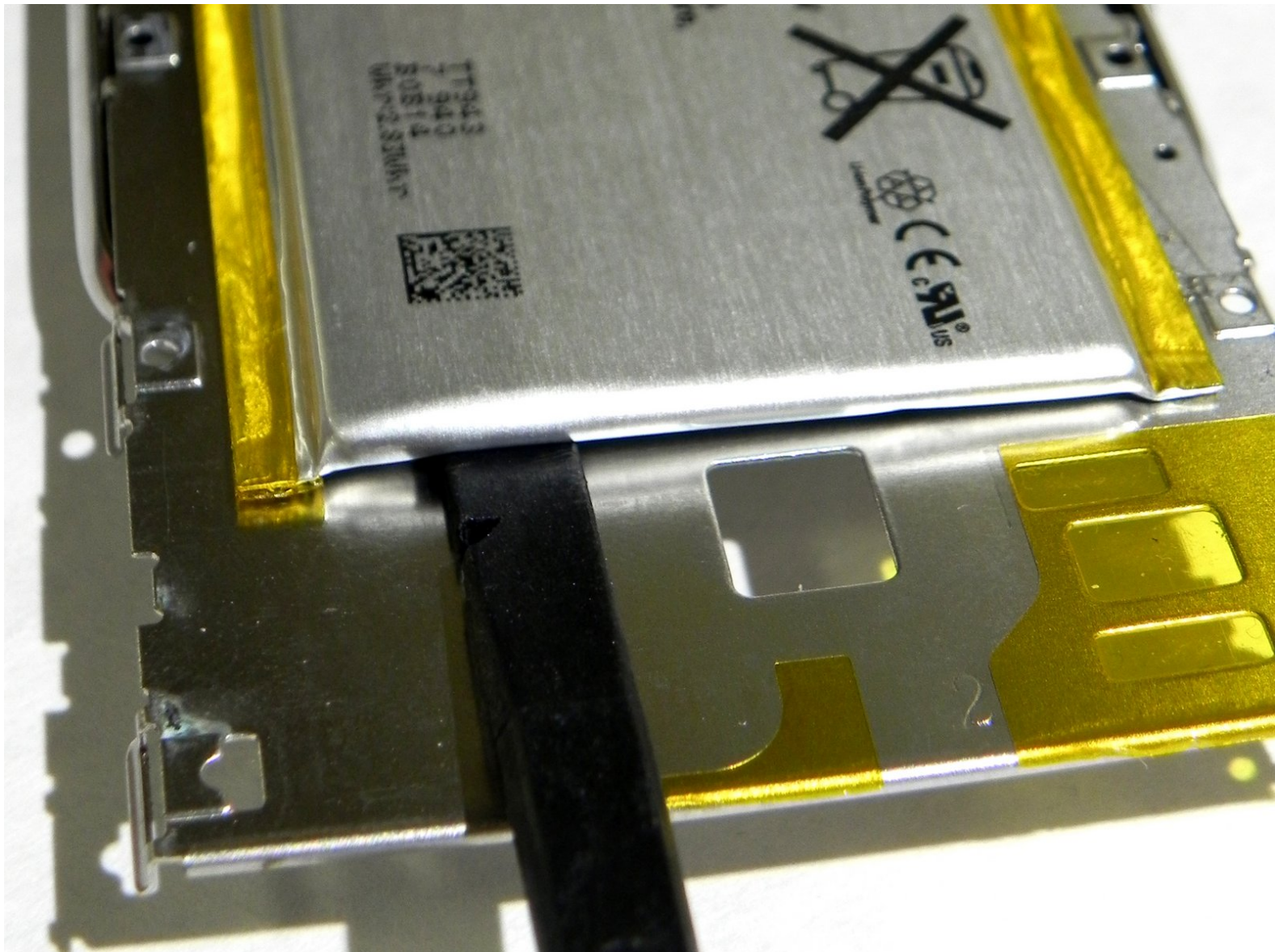




iPod Touch 2nd Generation Battery Replacement

This guide will explain, step by step, how to install a new battery into your iPod Touch.

Written By: Shannon Murphy



INTRODUCTION

This guide has been updated by iFixit staff! Read the new, official [iPod Touch 2nd Generation battery replacement guide](#).



TOOLS:

- [Electrical Tape in 6 Assorted Colors](#) (1)
- [Phillips #00 Screwdriver](#) (1)
- [Solder](#) (1)
- [Soldering Iron](#) (1)
- [Spudger](#) (1)
- [Tweezers](#) (1)
- [iFixit Opening Tools](#) (1)



PARTS:

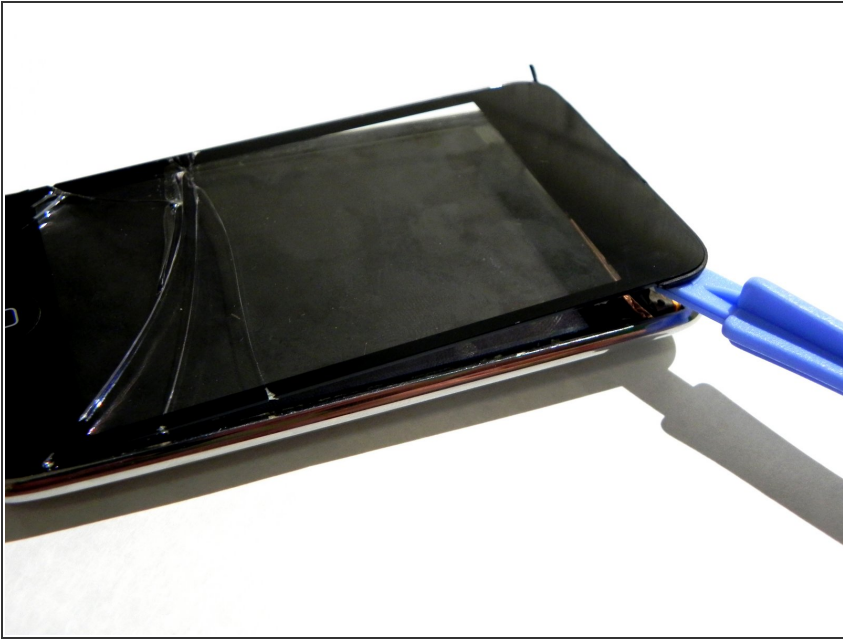
- [iPod touch Gen 2 Replacement Battery](#) (1)


Step 1 — Front Panel



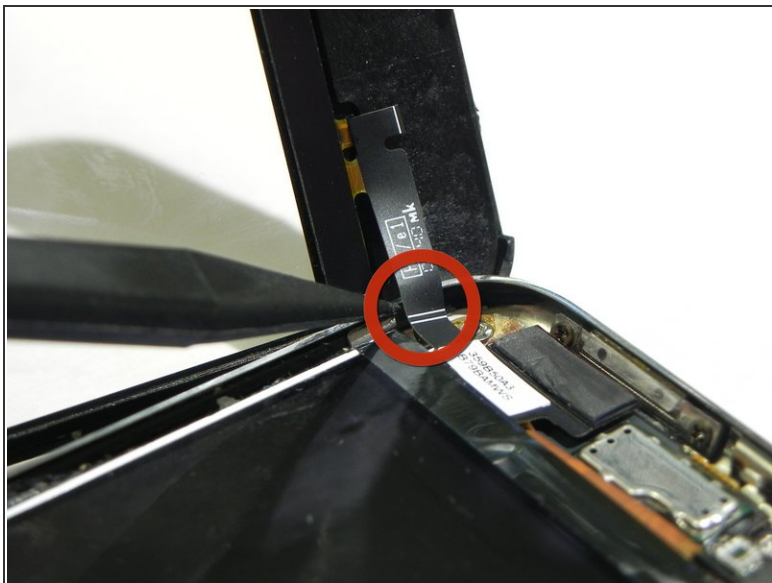
- Wedge the PX 3688 plastic opening tool between the glass front panel and the plastic frame. Start near the top where the volume control buttons are located and stay on one side of iPod.
- Turn the tool in a hinge-like rotation away from the iPod and pry the glass panel out of its case.
- Be careful to work at a slow and gentle pace. Avoid breaking anything inside the iPod, especially the screen.

Step 2



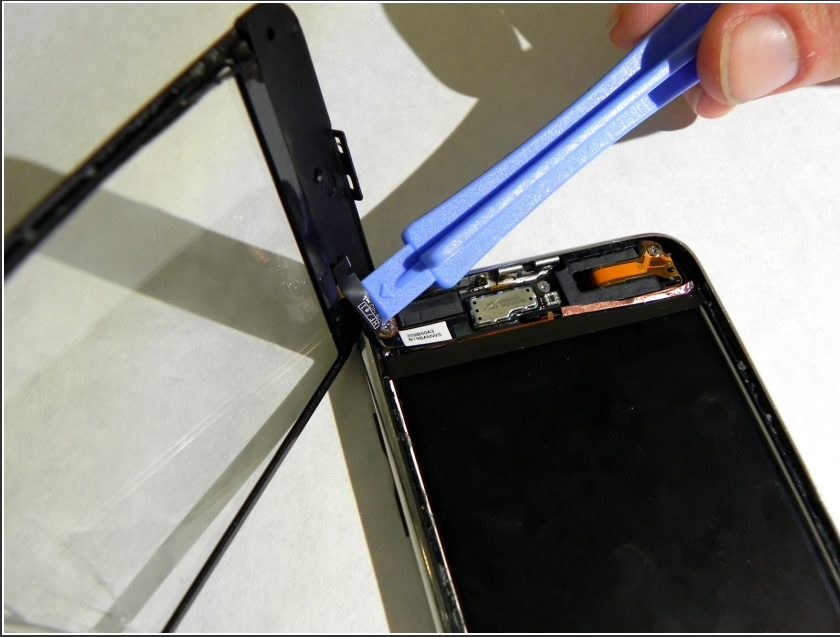
 Make sure not to slide the tool along the edge once you've managed to wedge it between the screen and panel. Repeat the process of prying the tool into a point along one of the edges and remove the tool to insert it at another point.

Step 3



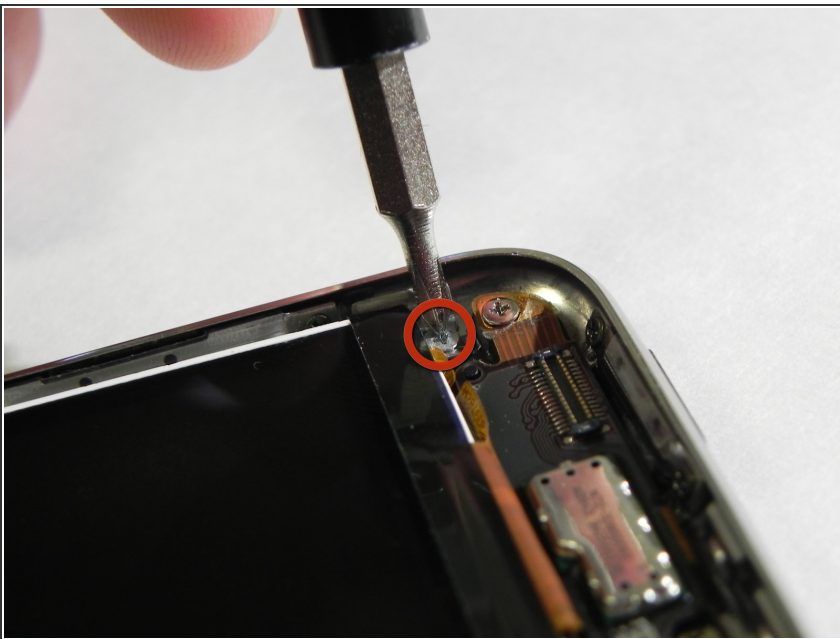
- Work your way around the iPod, prying the front panel up, until it is completely separated from the clips.
 - Lift the front panel out of the bottom case.
- ⚠ Be careful not to damage the touch screen connector cable still attached near the upper left corner of the iPod.

Step 4



- Using the PX 3688, pry the touch screen cable connector off the top logic board.
- Check the front panel for any damage. Be careful not to scratch the front panel on the underside of the black portions.
- Clean the face of the display and the inner face of the front panel.

Step 5 — Display



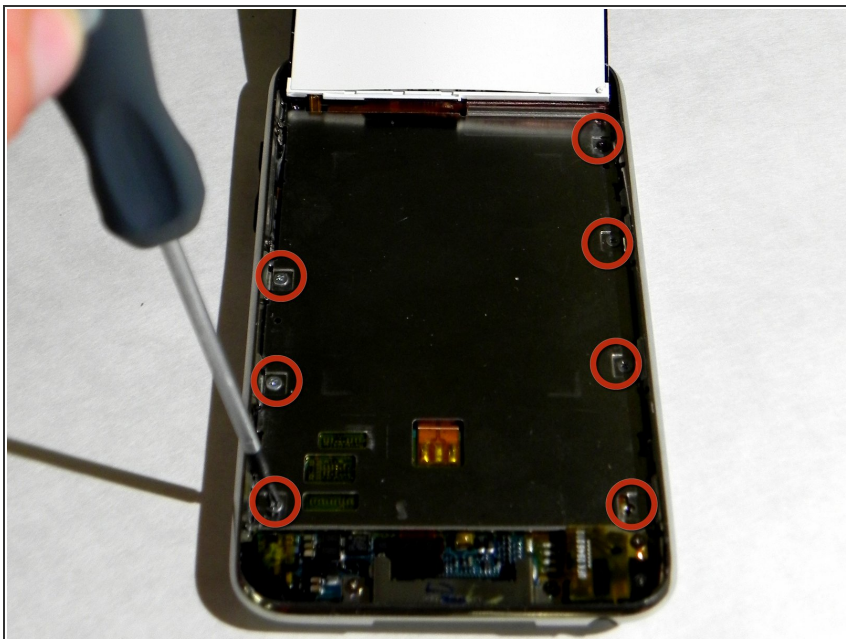
- Remove the Phillips screw in the top left corner attaching the metal tray to the rear panel.

Step 6



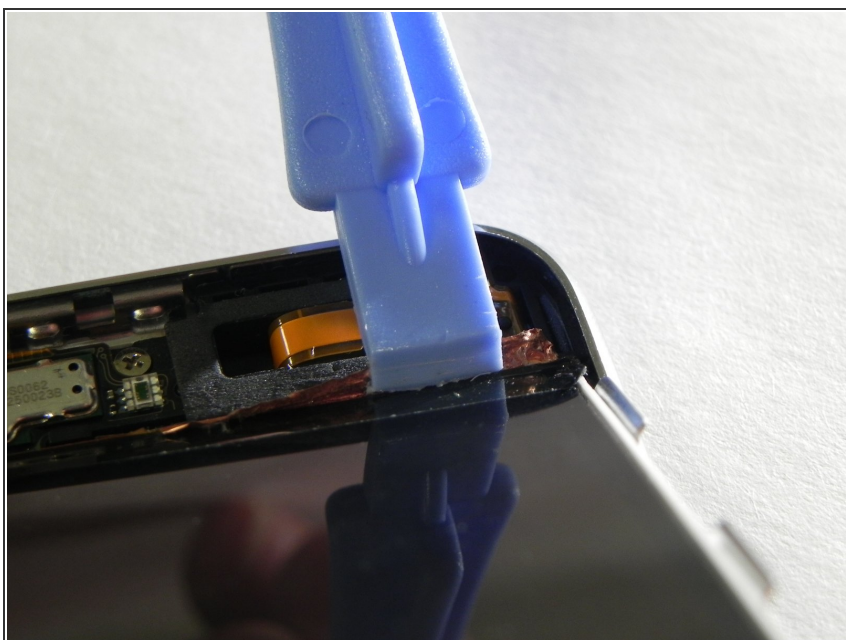
- Insert a PX 3688 plastic opening tool with the edge angled up, toward the underside of the display, between the white plastic backlight and the metal beneath it.
- Pry the lower edge of the display up until it's at about a 45 degree angle with the rest of the iPod.
- Hold the display in this position with one hand for the next step to avoid damaging the display ribbon cable.

Step 7



- Remove the seven Phillips screws securing the metal display tray to the rear panel with a Phillips #00 screwdriver.
- ⓘ Keep track of the screws for reassembly. The two darker screws belong in the holes in the tray nearest the bottom edge.

Step 8



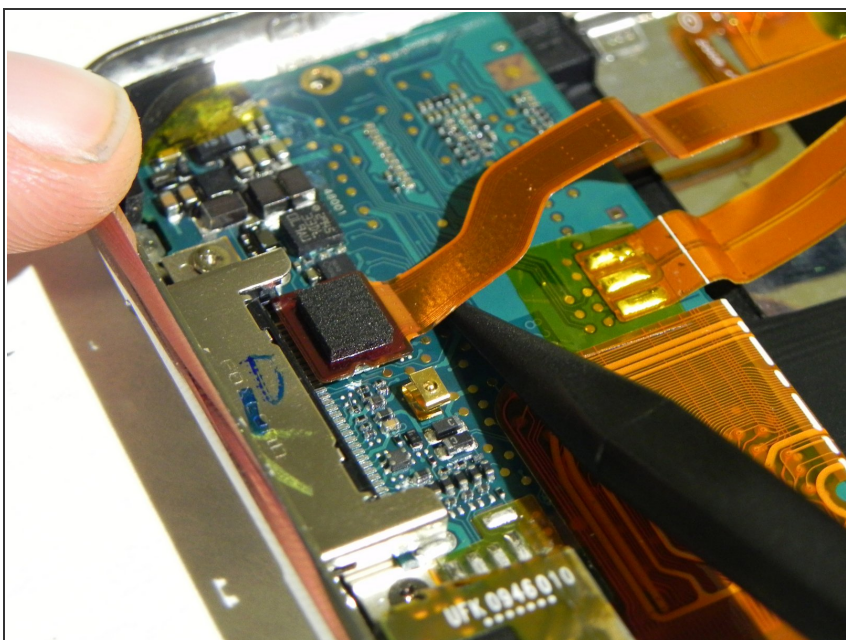
- Place the display back in the metal display tray.
 - Use a PX 3688 plastic opening tool to peel the copper tape off the top edge of the display.
- ⚠ Do not peel off the copper tape that is attached to the metal display tray.

Step 9



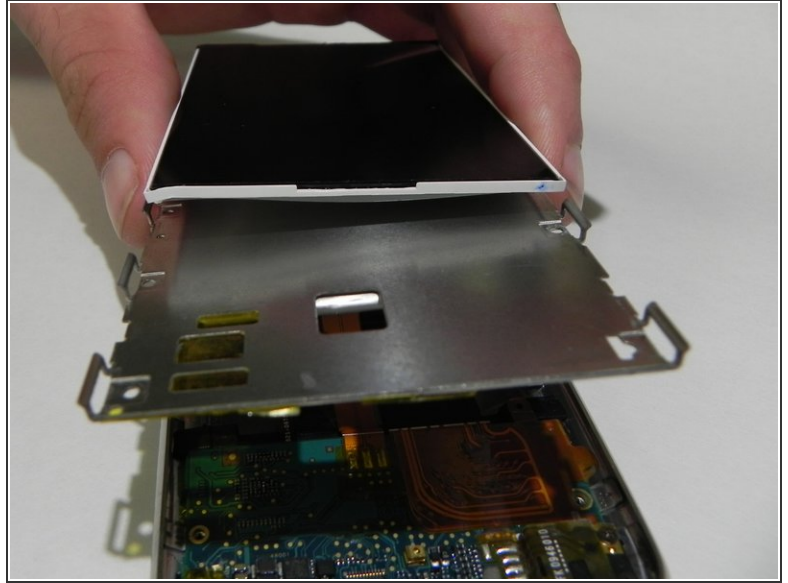
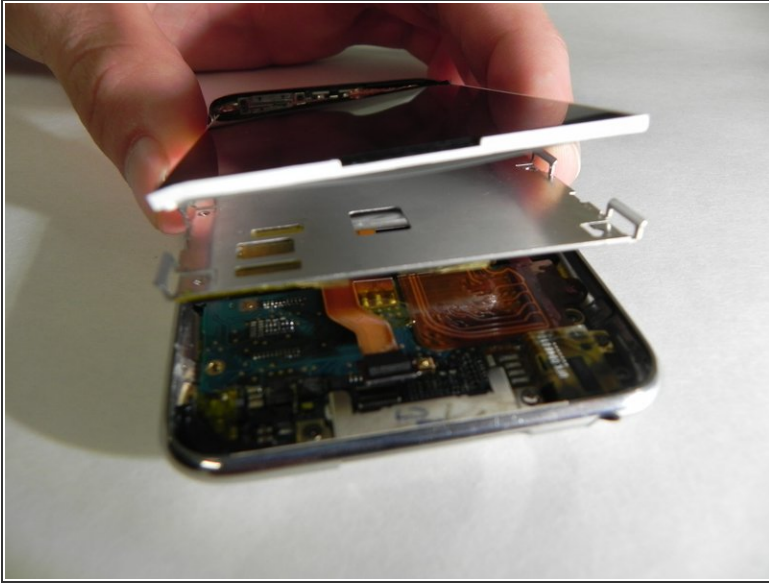
- Lift the bottom of the display and rotate it towards the top edge of the iPod.
- Use the spudger tool to lift the metal display tray and rotate it toward the top edge of the iPod on top of the display.

Step 10



- Use a spudger tool to pry the display cable connector off its socket on the logic board.
- ⓘ The logic board is beneath where the Home button used to be.

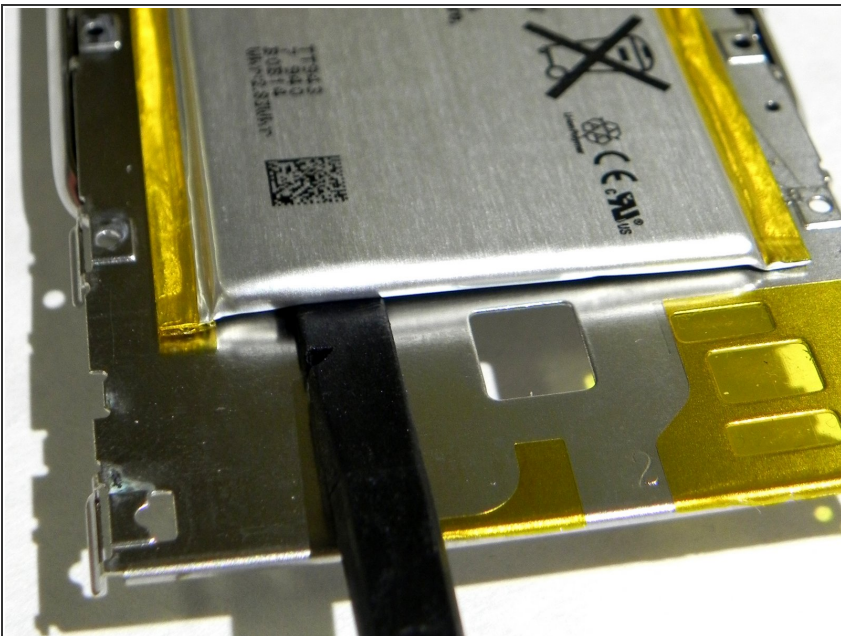
Step 11



- Lift the metal tray slightly (the battery is attached to the underside) and remove the display from the iPod.

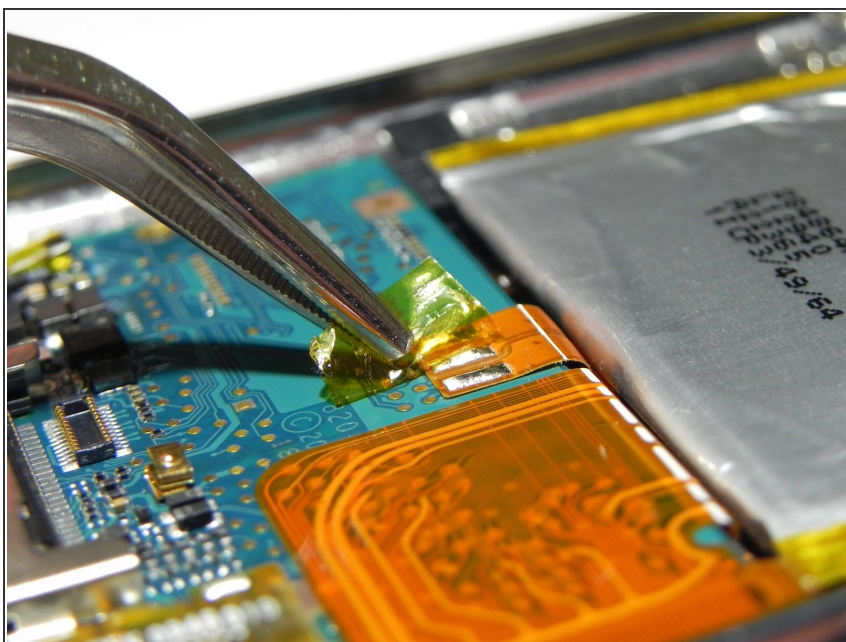
⚠ Make sure the delicate cable is not caught. The display ribbon is under the metal display tray.

Step 12 — Battery



- Rotate the metal display tray to the top of the iPod, being careful of the ribbon connecting the battery to the logic board.
- Using the flat end of the spudger, pry the battery from the adhesive that secures it to the metal display tray.
- Remove the metal display tray.
- Place the battery back in the rear panel.

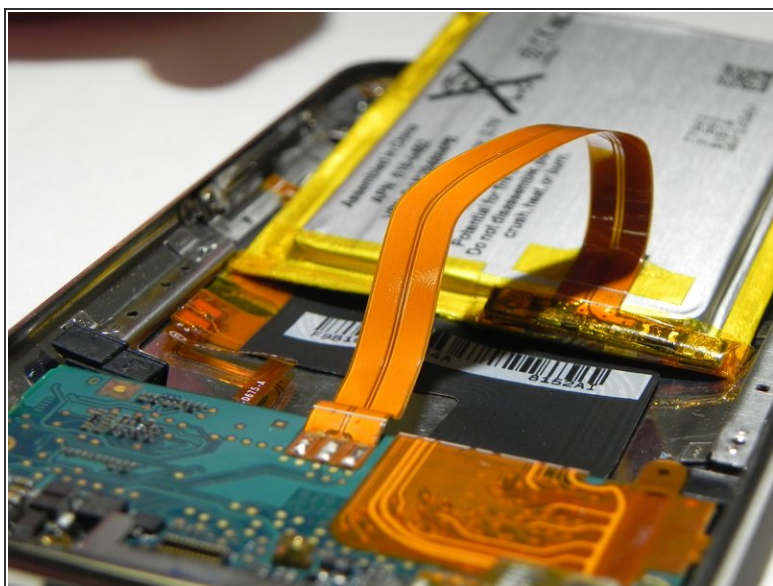
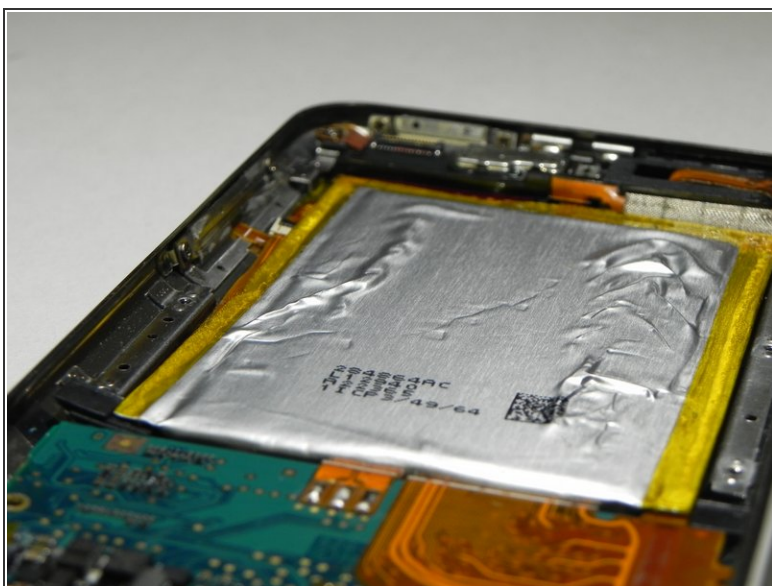
Step 13



- Using a pair of tweezers, remove the small strip of tape covering the end of the battery cable.

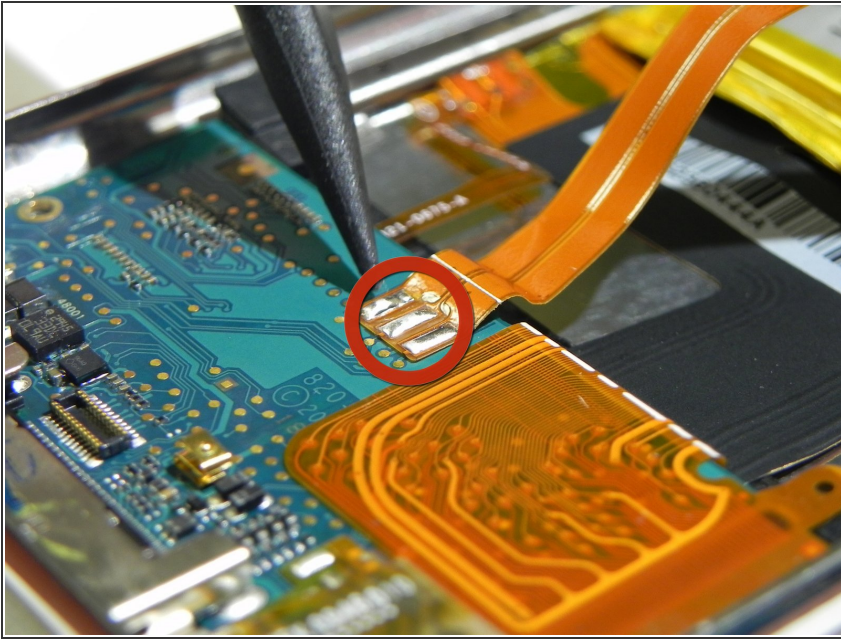
⚠ Cover the bare battery leads with tape once the new battery is installed to prevent electrical shorts.

Step 14



- Flip the battery over and place it in the rear panel, face down.

Step 15



- The battery on the iPod Touch is attached via solder pads.
- Heat the solder of the solder pads individually and use your metal spudger to pry them from the logic board.
- When soldering, work from one side of the ribbon cable. Heat the side while using the spudger to gently lift the ribbon cable from the board. Repeat this process for the other two pads.

⚠ Only solder the solder pads on the board and the ribbon cable. Soldering outside the correct area has potential to ruin the logic board.

⚠ Make sure to only hold the tip of the iron against the solder pad long enough to complete the melt. Overheating can ruin the logic board and the ribbon cable.

Step 16



- ① The battery should be free from the logic board by now.
- Lift the old battery out of the iPod and set it aside in a safe location.

To reassemble your device, follow these instructions in reverse order.