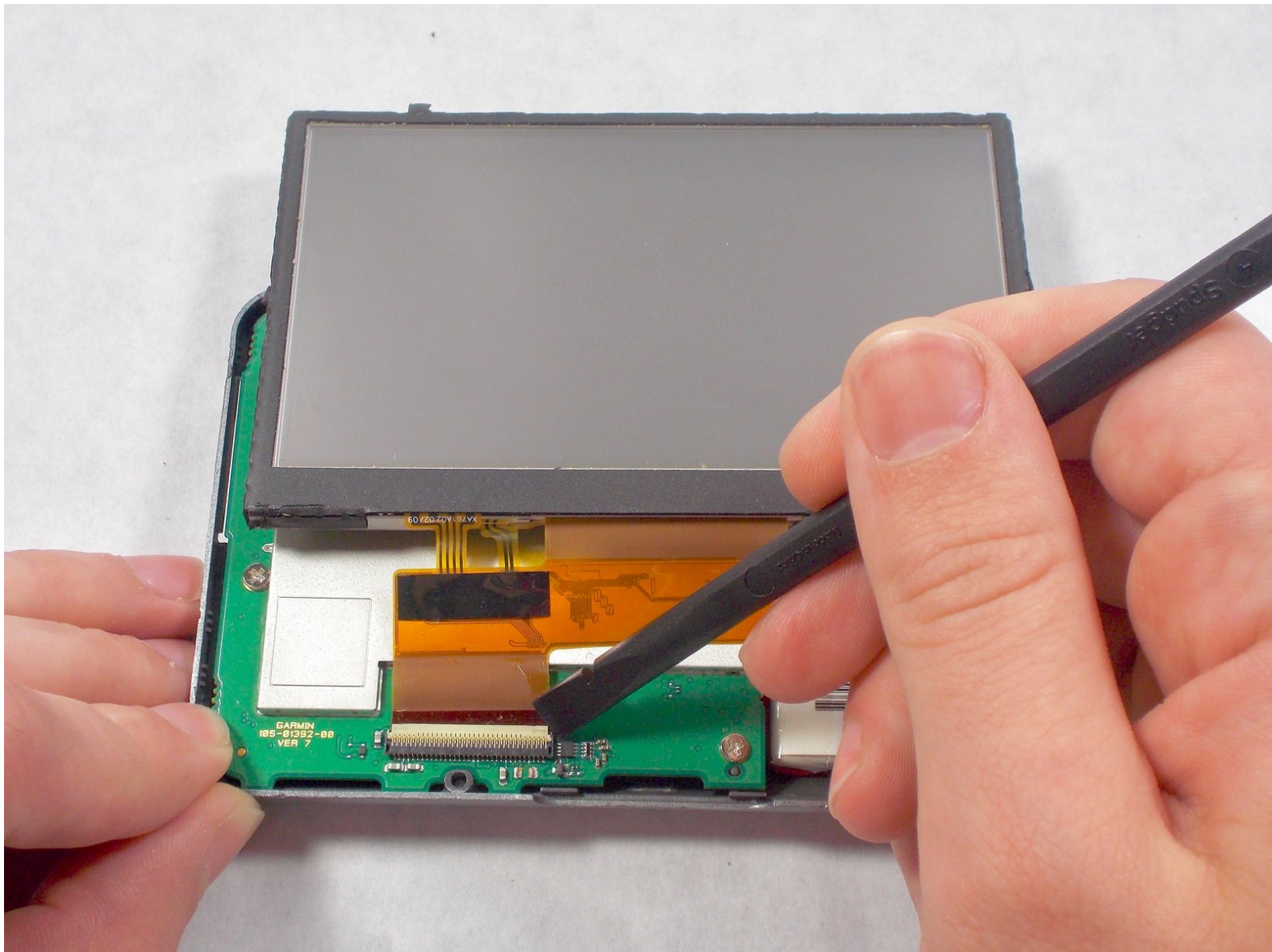




Garmin Nuvi 200w Display Assembly Replacement

Replace the display assembly and front cover of the Garmin Nuvi 200W. This allows for a replacement of other components inside the device.

Written By: Clayton Golz



This document was generated on 2020-11-28 05:53:19 AM (MST).

INTRODUCTION

The display assembly and front cover to the Garmin Nuvi 200W are exposed more than other internal elements of the device. Due to this vulnerable position, the cover may become scratched, damaged, or broken under stress. Replacing the rear cover can make the Nuvi 200W look new again, at much less cost!

It is important to note, however, that the case and it's internals require very specific screws, that are small and easy to lose. It is recommended that a magnet or tap is used to secure screws after removal. It is also important to gently remove the back cover, as it will be attached to other interior elements. This connection is sensitive and should be treated as such until the guide shows proper disconnection of this particular cable.

Only basic tools are required, such as screw drivers, and opening tools.



TOOLS:

- [T5 Torx Screwdriver](#) (1)
 - [iFixit Opening Tools](#) (1)
-

Step 1 — Rear Cover



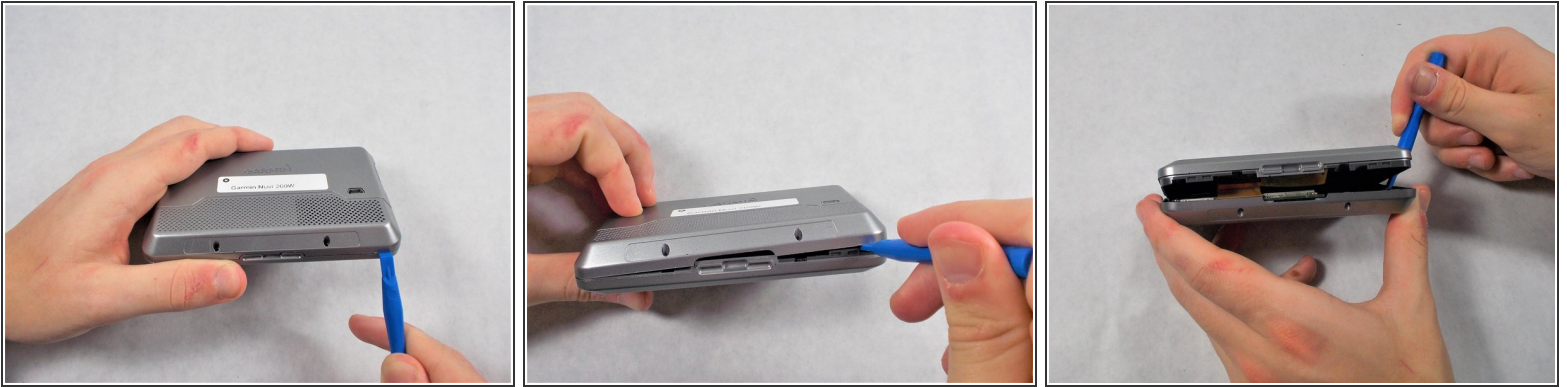
- Peel off the sticker in order to find the two Torx T5 screws.

Step 2



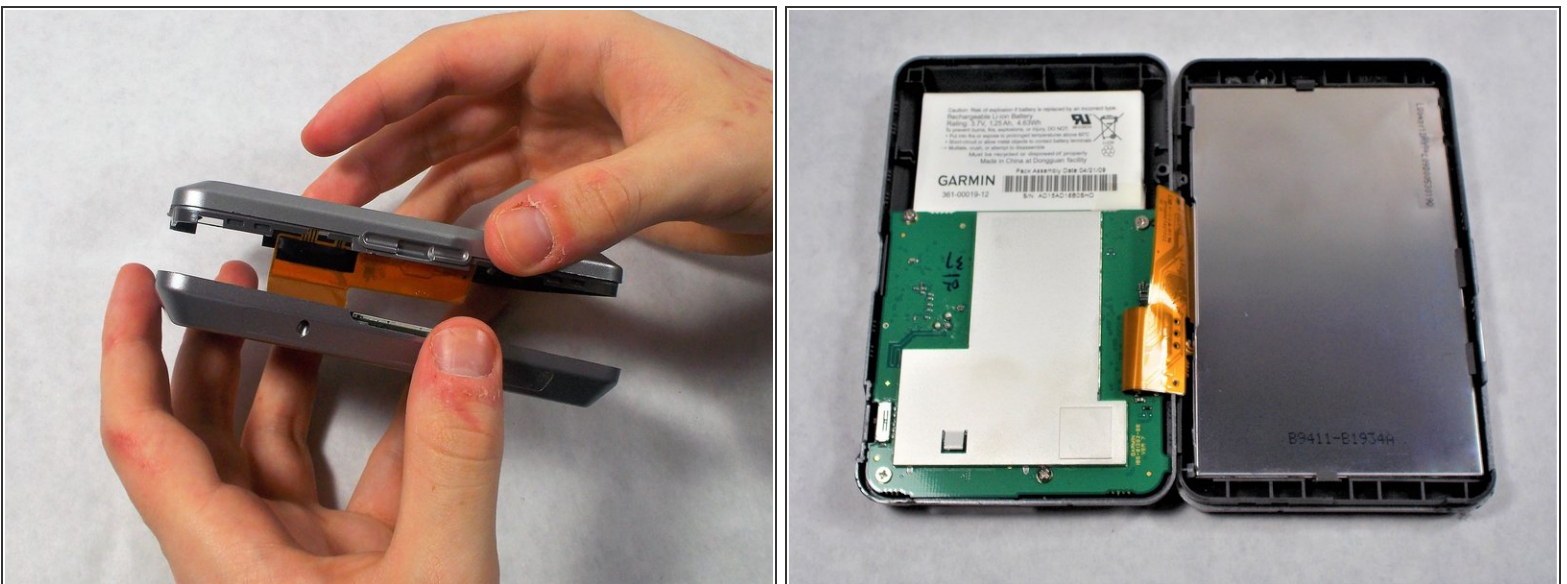
- Remove the two 4mm T5 Torx screws.

Step 3



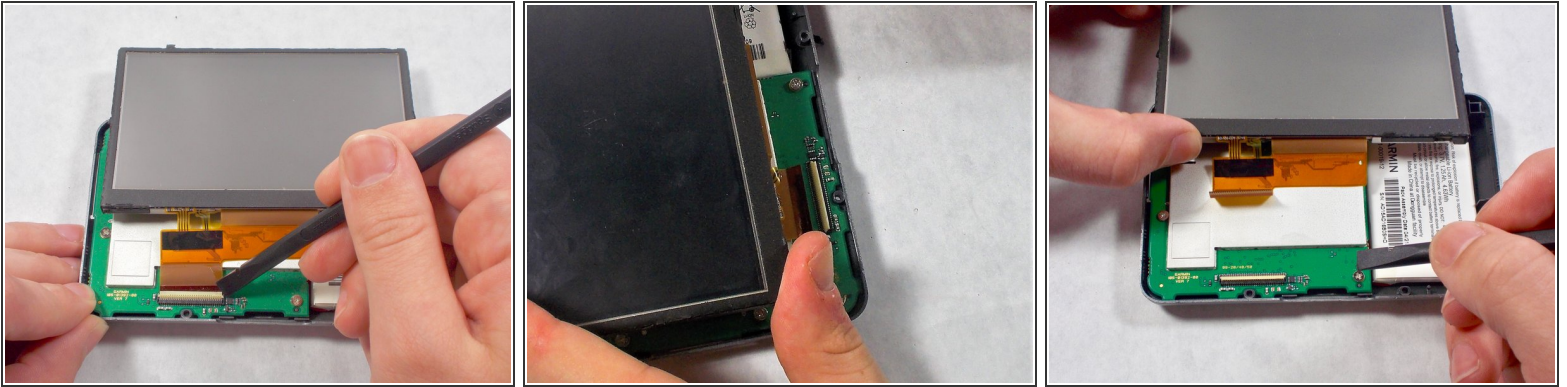
- Carefully, using your plastic opening tools find the crease which separates the front and rear covers.
 - Once you have a little gap, work it around the whole device with the tool to get separation.
- ⚠ There is a ribbon cable between the two covers, be very careful when taking them apart to not damage the ribbon.

Step 4



- ⚠ After the case front and rear are separated, carefully lay the two sides down without disconnecting or damaging the orange ribbon cable.

Step 5 — Display Assembly



- Carefully use the black spudger to lift the white retaining clamp on the display cable ZIF connector.
⚠ Make sure to lift up on the white retaining clamp and not the ZIF connector itself.
- Slide the orange ribbon cable away from the ZIF connector.

To reassemble your device, follow these instructions in reverse order.