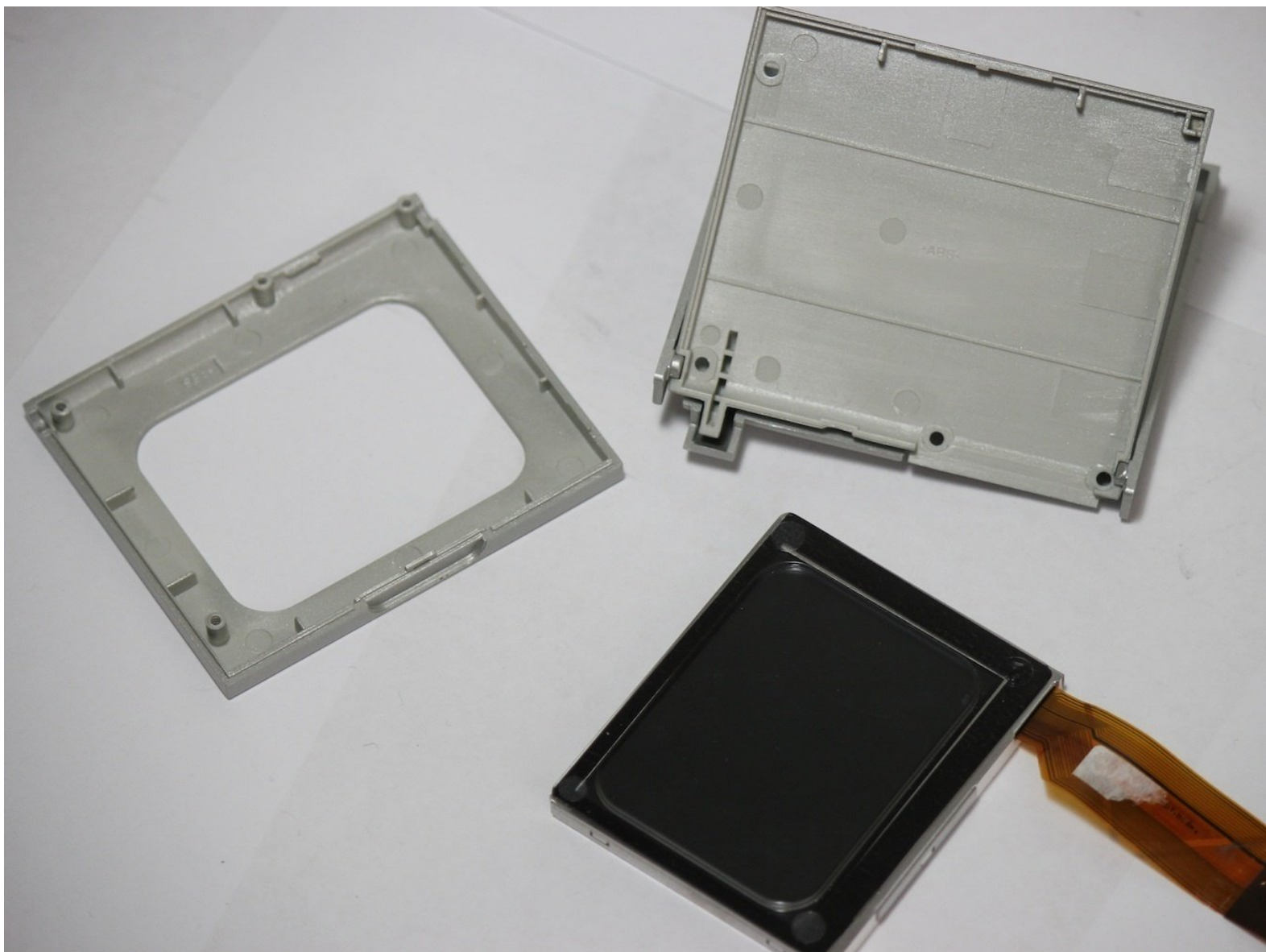




# Dell Photo Printer 540 LCD Panel Replacement

If your LCD Panel is cracked or not displaying anything this guide will assist you in replacing it.

Written By: Ashley Lopez





## TOOLS:

- [Phillips #00 Screwdriver](#) (1)
  - [Phillips #2 Screwdriver](#) (1)
-

## Step 1 — Case



- Rotate the photo printer so that the bottom of the case faces upward.

## Step 2



- Use a Phillips #2 screwdriver to remove the three 5.65 mm screws on the bottom panel of the case in a counter-clockwise fashion.

### Step 3



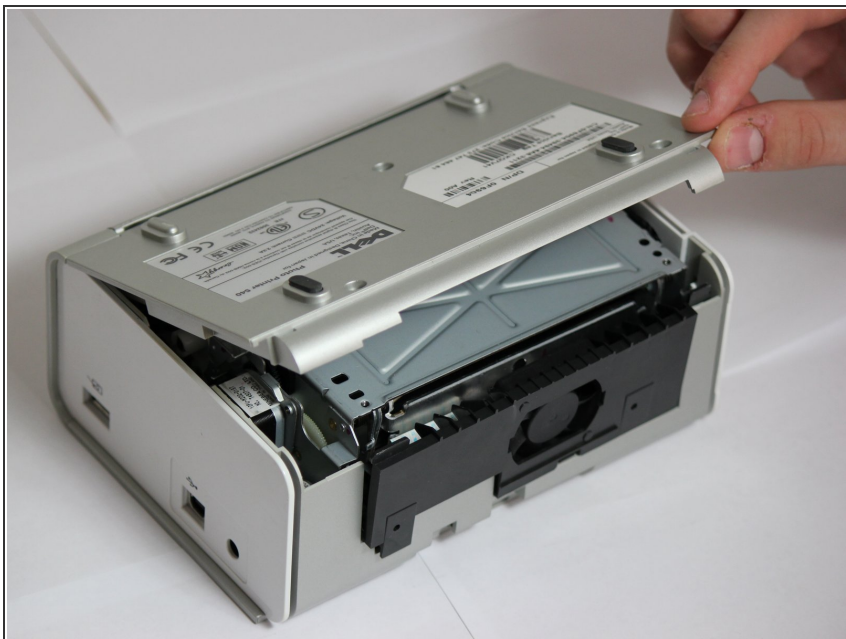
- Rotate the device so that it is upright again. Under the LCD Panel there is a 9.62 mm screw, unscrew using a Phillips #2 screwdriver.

### Step 4



- Remove the back panel of the case by pulling directly back.
- ⓘ Some carefully applied force may be required to remove this part.

## Step 5




- Rotate the photo printer so that the bottom panel faces up once again. Now lift off the bottom panel of the case to access all internal components.

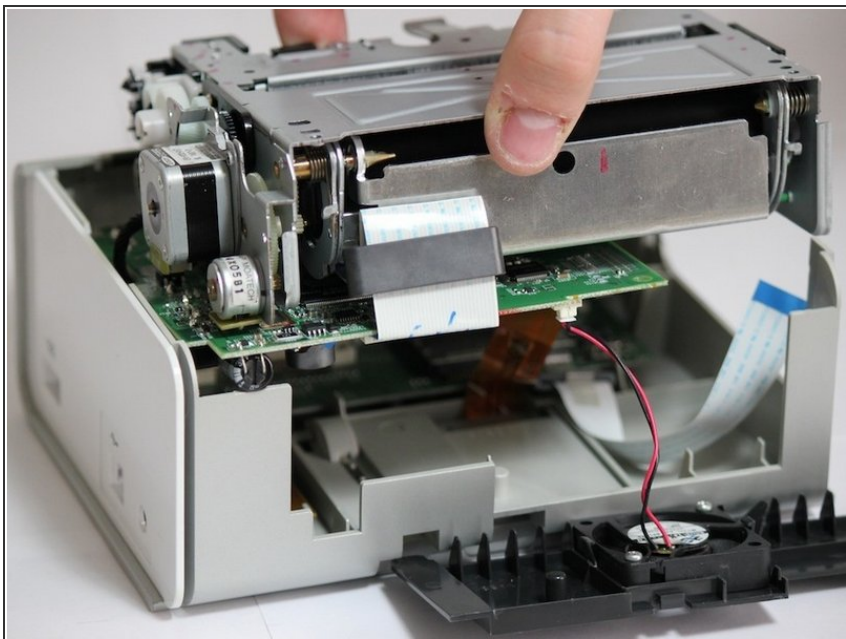
## Step 6



- Finally remove the side panel with the ink-cartridge door by holding the right side and pulling backwards with the left side.

 Caution! The side panel is held in by tabs; don't break these.

## Step 7 — Cooling Fan



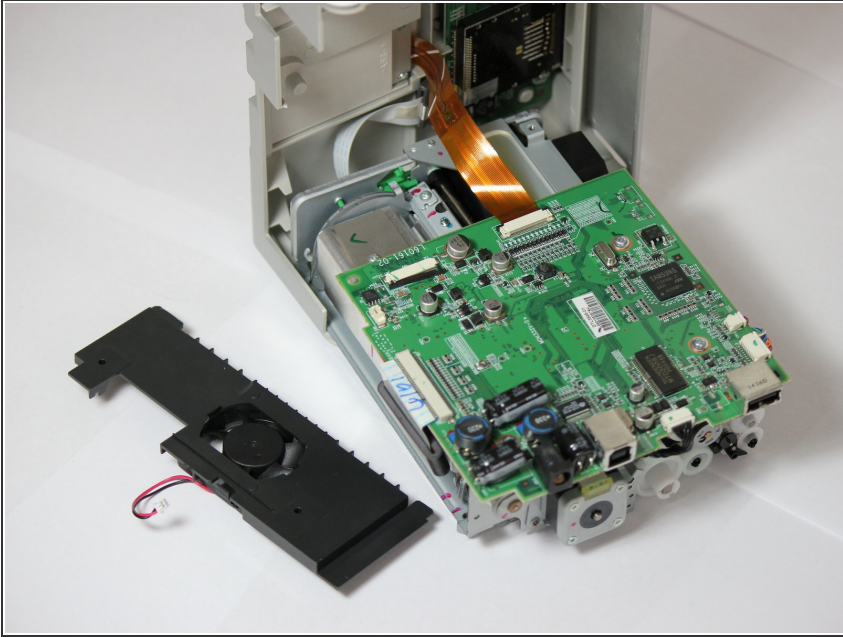
- Carefully remove the inner components of the device by lifting the inner components up and out of the casing.

## Step 8



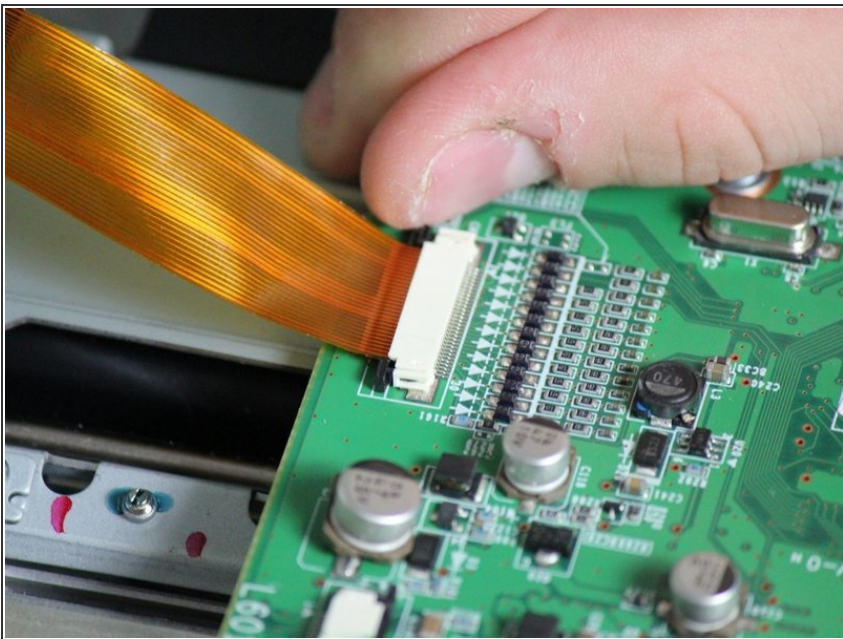
- Locate the red and black cable that is connecting the fan to the top of the logic board.

## Step 9



- Carefully, remove the red and black cable from the logic board by pulling gently in order to isolate the cooling fan from the device.

## Step 10 — LCD Panel



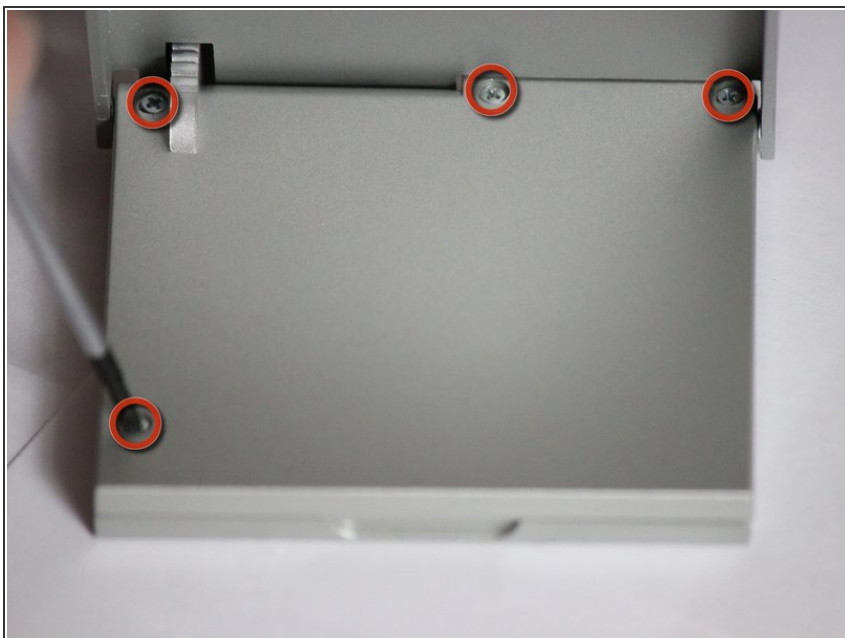
- Locate the data ribbon that connects the LCD panel to the mother board.
- Carefully unclip the ribbon from the mother board.
- ⓘ Separate top cover from bottom base and flip upright so that the LCD panel is facing up for the next step

## Step 11



- Slide the LCD panel out and away from the printer case.
- ⓘ Hold bottom of LCD panel and lift the screen 70 degrees. Set the screen face down for the next step

## Step 12



- Use a Phillips 00 screwdriver to remove the four 5.4 mm screws behind where the LCD screen is.

## Step 13



**i** You can now separate the individual pieces from each other, allowing the screen to be accessible to replace.

To reassemble your device, follow these instructions in reverse order.