



Acer Iconia B1-710 Tablet Camera Replacement

This guide will show you how to replace the camera on your Acer Iconia B1-710 Tablet.

Written By: Ryan Weber



INTRODUCTION

This guide will provide a set of step-by-step instructions on how to remove and replace the camera on your Acer Iconia B1-710 tablet.

In the event that your camera scratches, breaks, or malfunctions, this guide can help assist you to remove and replace the camera on your Acer Iconia B1-710 tablet.

Be careful, this is a fragile device.



TOOLS:

- [iFixit Opening Tool](#) (1)
 - [Phillips #000 Screwdriver](#) (1)
 - [Spudger](#) (1)
-

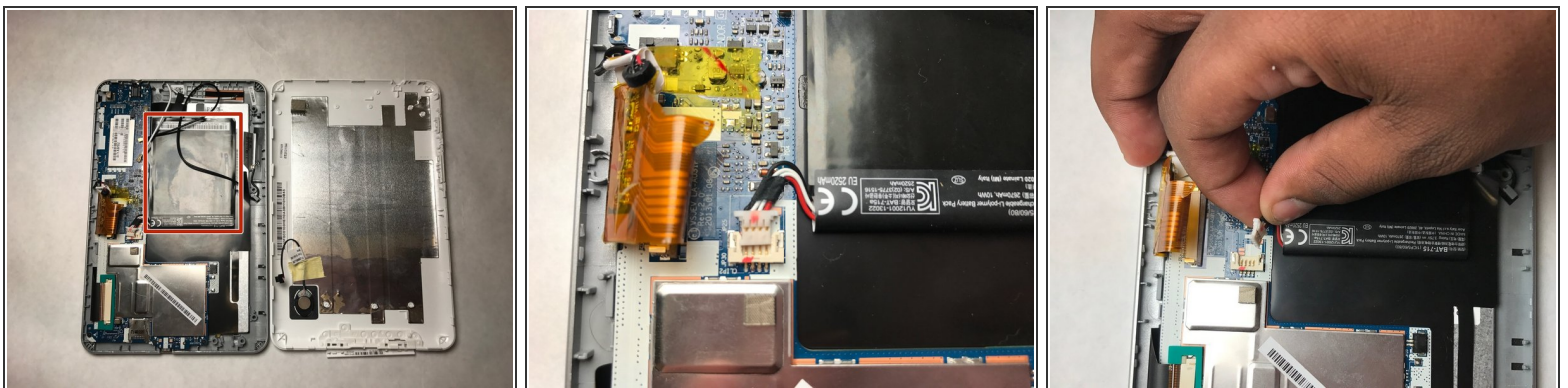
Step 1 — Battery



- Open the back cover by prying the casing off with an opening tool.

⚠ Be careful to not pull pieces apart aggressively. There is a wire that could break.

Step 2



- Unplug the battery from the motherboard.

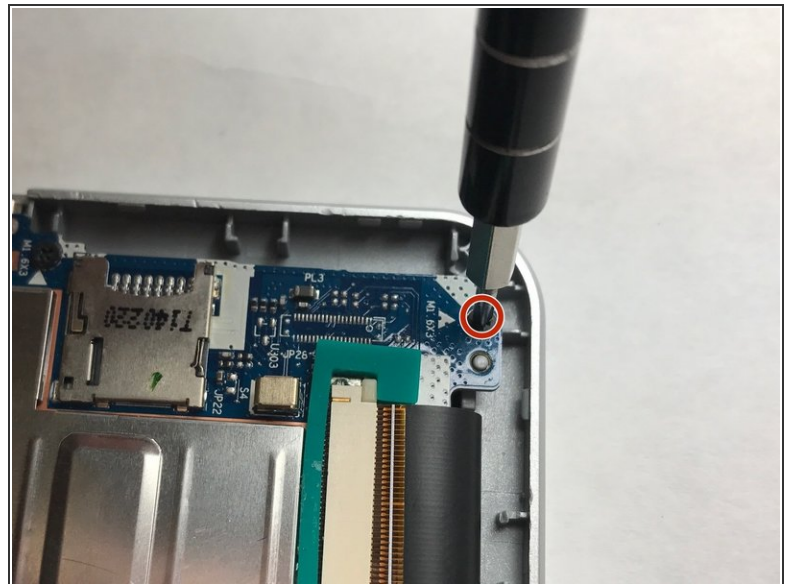
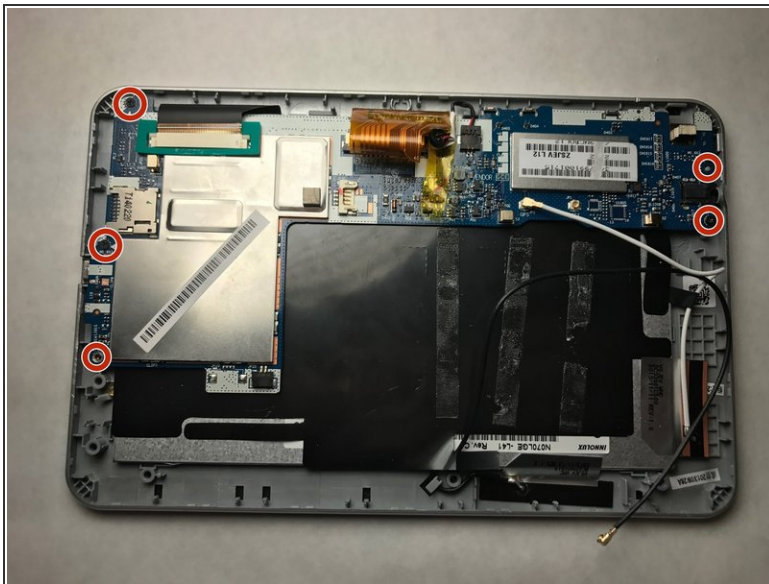
Step 3



- Remove the battery.

i The battery is lightly glued in, so there may be some difficulty getting it out.

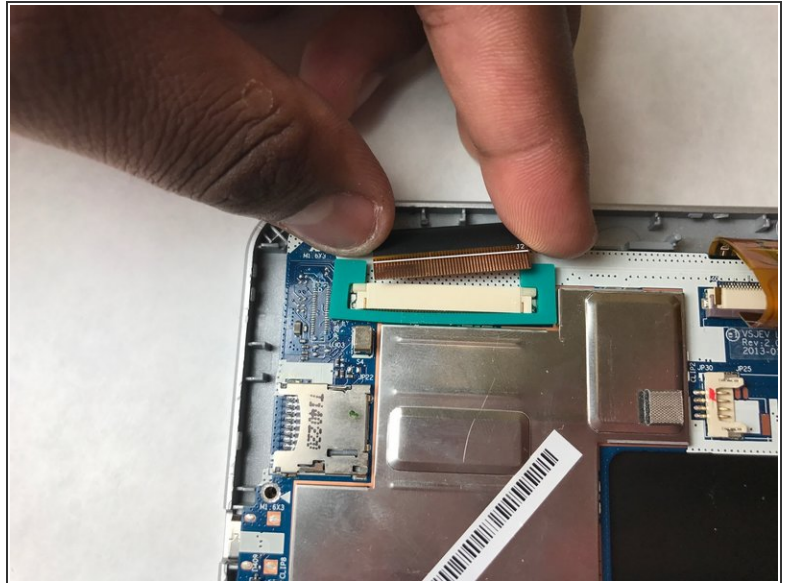
Step 4 — Camera



- Remove the five 3mm Phillips #000 screws. The location of the screws are shown in the above picture, circled in red.

i Keep the removed screws in a safe place so they can be used later.

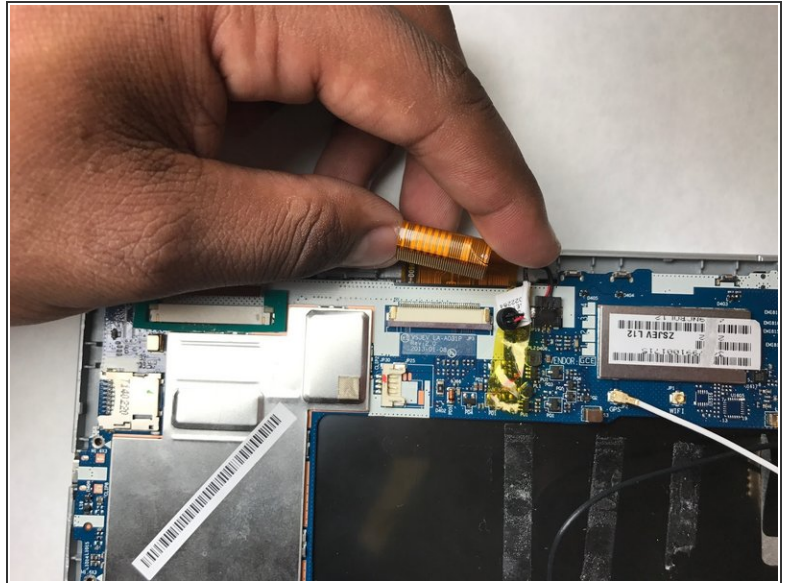
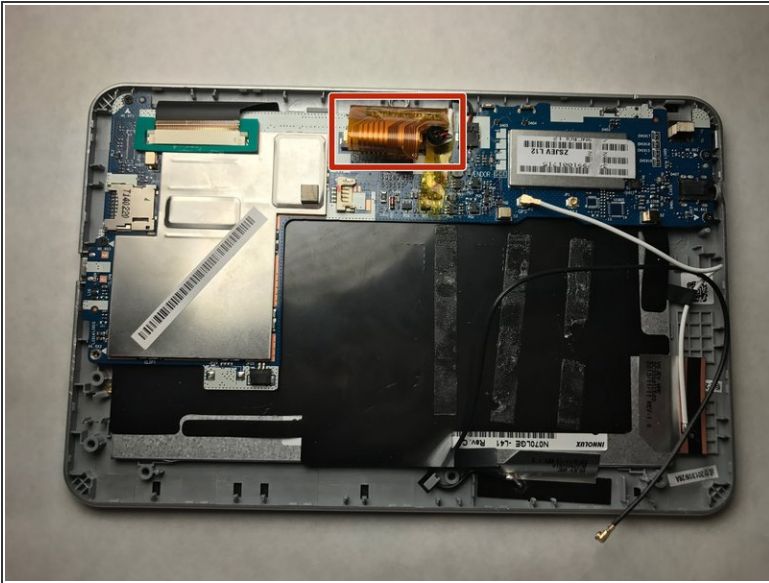
Step 5



- Unplug the LCD by lifting the LCD plug from the white board. The location of the LCD plug is shown in the above picture, circled in red.

i If you are having difficulty removing the LCD plug, use a spudger to gently lift it.

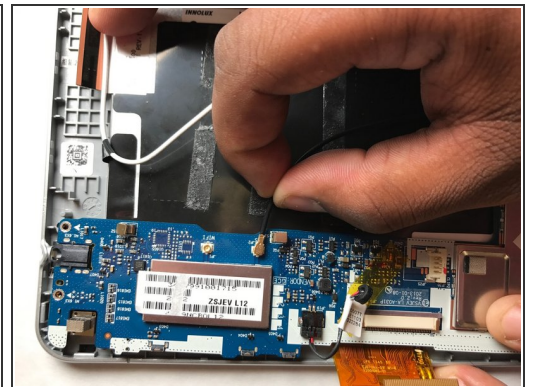
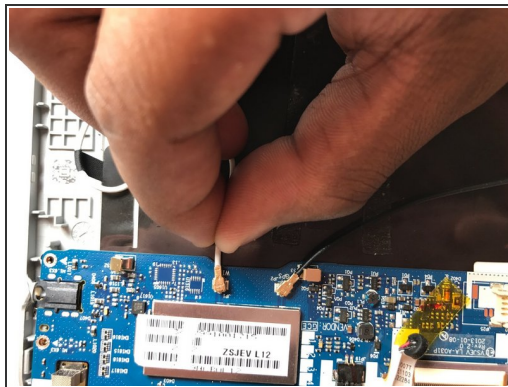
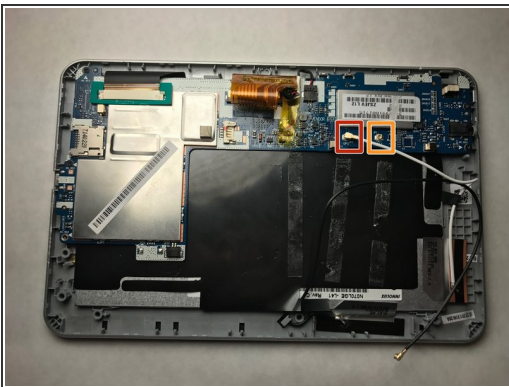
Step 6



- Next, unplug the orange strip from the motherboard by gently lifting it. The location of the orange strip is shown in the above picture, circled in red.

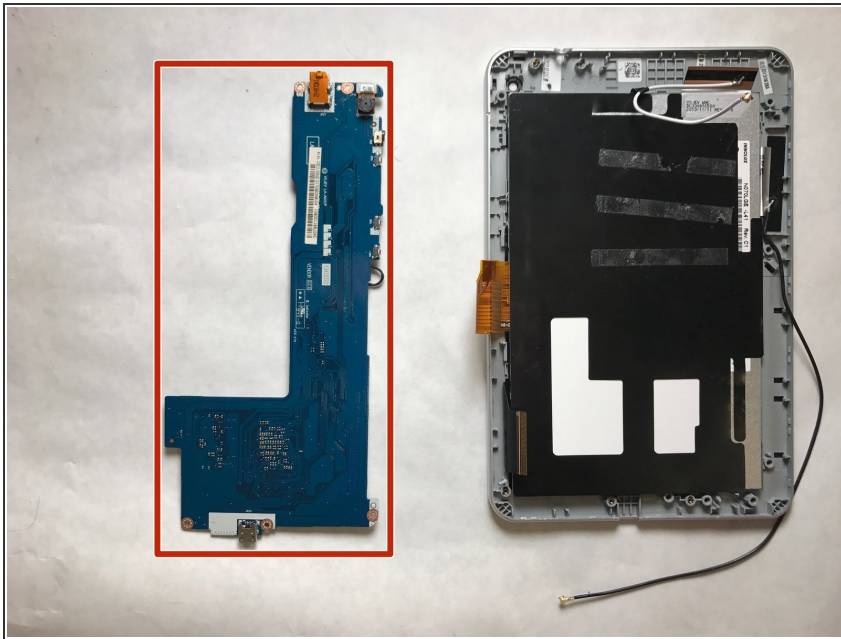
⚠ The orange strip is delicate; be careful when unplugging it and make sure it doesn't tear.

Step 7



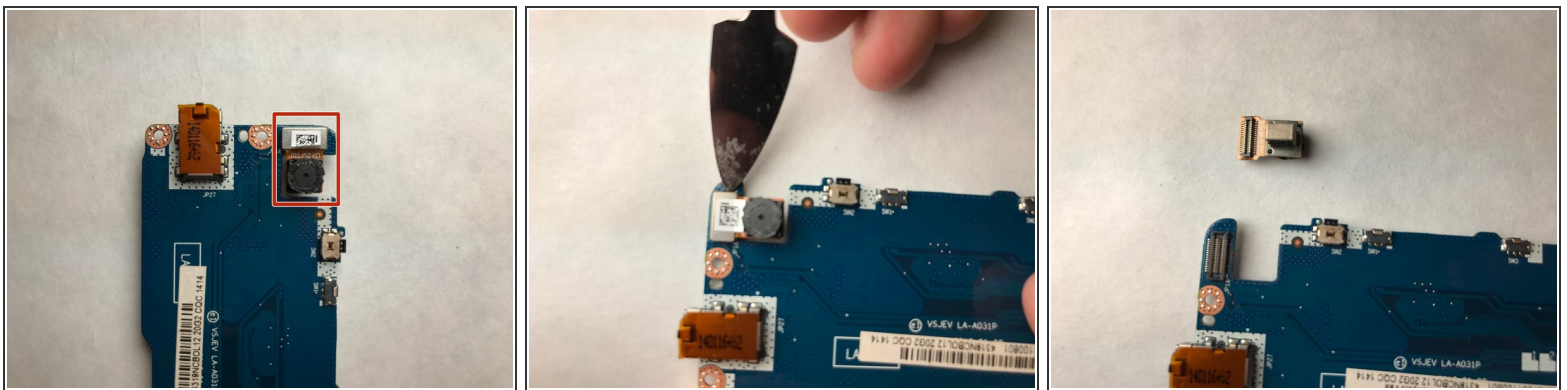
- Unplug the white wire, shown above, circled in red.
- Unplug the black wire, shown above, circled in orange.

Step 8



- Gently, remove the motherboard by carefully lifting it.

Step 9



- Remove the camera from the motherboard with the spudger.

⚠ Be careful not to damage the camera plug; it is very delicate.

To reassemble your device, follow the above instructions in reverse order.