



# Toshiba Satellite C55-C5240 Screen Replacement

When the screen is cracked or just does not...

Written By: Angela Rodriguez



# INTRODUCTION

When the screen is cracked or just does not work, it will need to be replaced. This is the guide you need to help you do that.

## TOOLS:

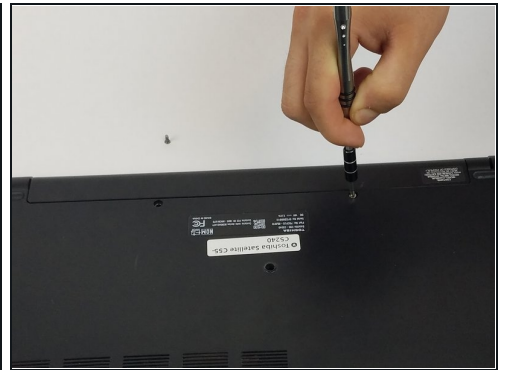
[iFixit Opening Tool](#) (1)

[Tweezers](#) (1)

[Phillips #1 Screwdriver](#) (1)

[Phillips #00 Screwdriver](#) (1)

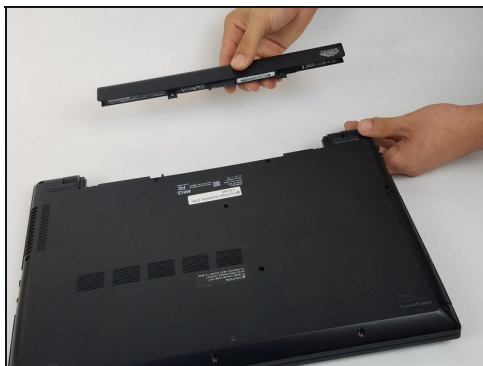
## Step 1 — Battery



 Make sure you turn off the laptop before starting.

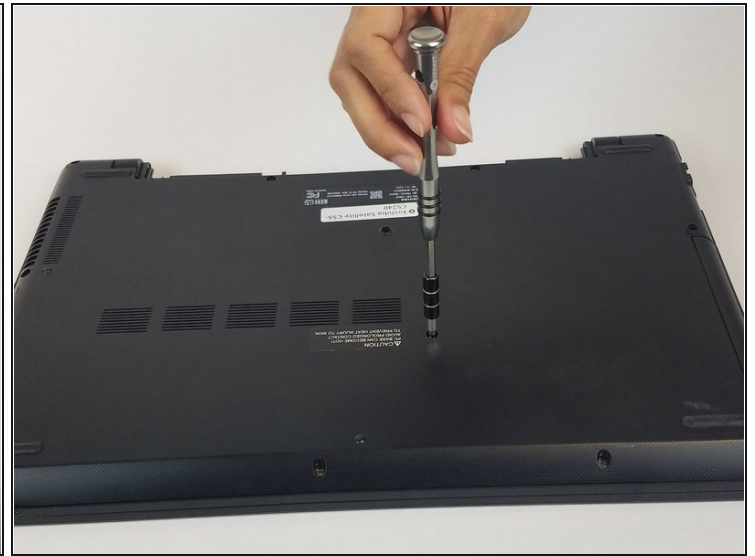
- Remove the two 6.5mm PH1 Phillips screws securing the battery.

## Step 2



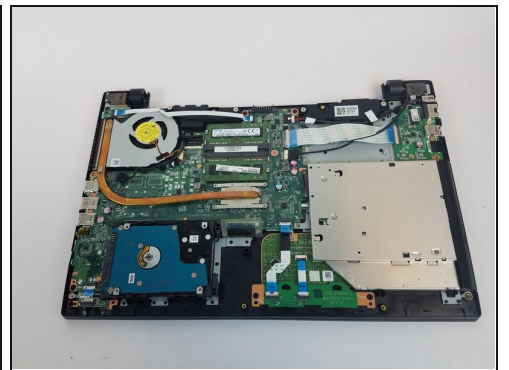
- Pull the battery out, keeping it flat and parallel to the laptop so that it slides out easily.

### Step 3 — Back cover



- Unscrew the ten 6.5mm PH1 Phillips head screws that hold down the back cover.

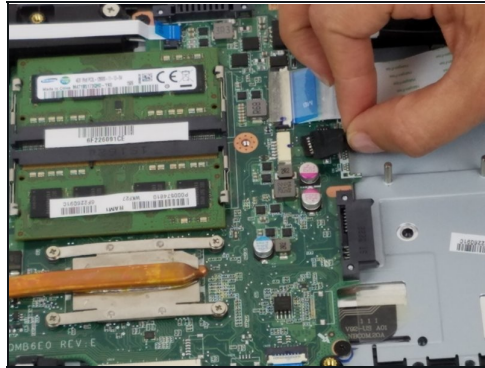
### Step 4



- Using the plastic opening tools, open the back cover and remove it from the laptop.
- ① It is recommended that you start from a corner and run the tool along the edge of the cover.

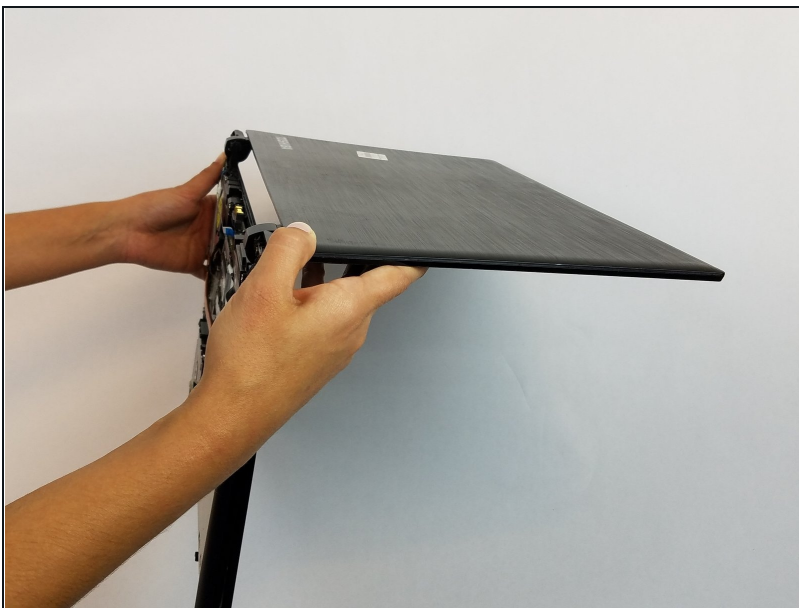
⚠ Be careful not to bend or crack the cover.

## Step 5 — Screen



- Carefully disconnect these three cables.

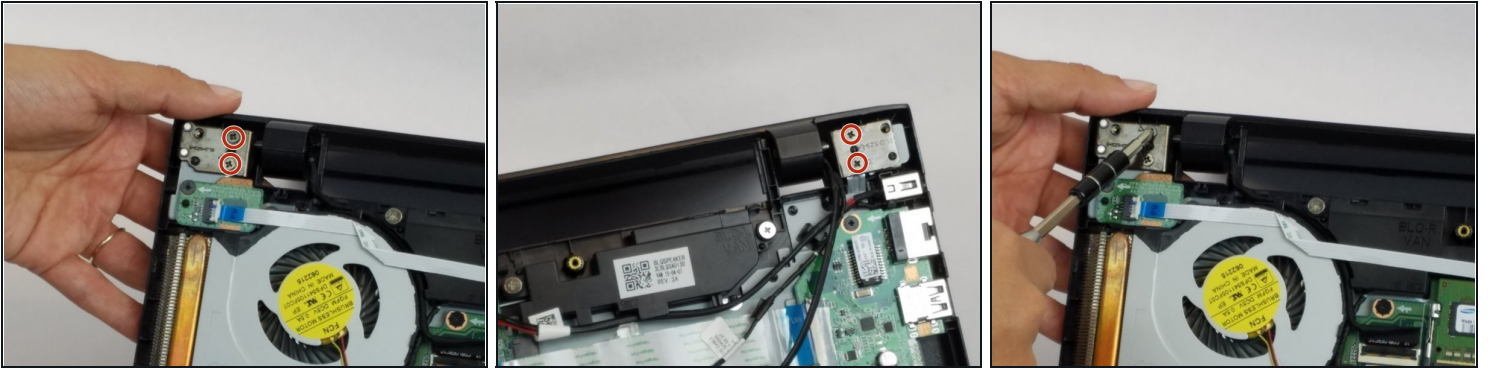
## Step 6



- Open the laptop at a right angle to make the later removal much easier.

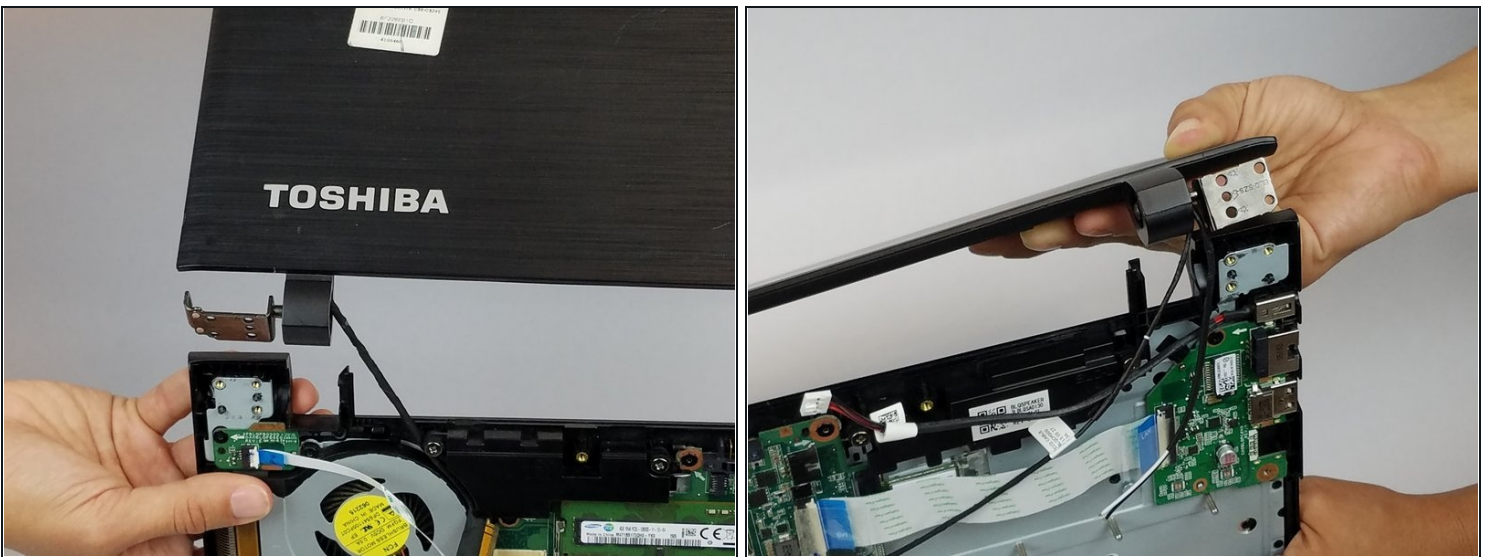


## Step 7



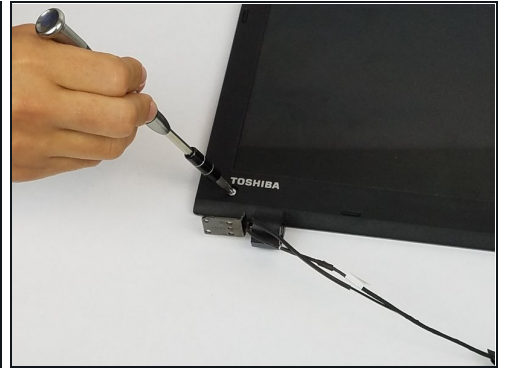
- Unscrew the four PH1 Phillips head screws on the hinges.

## Step 8



- Separate the screen from the rest of the laptop.
- ① Make sure the cables do not catch on the bottom piece.

## Step 9



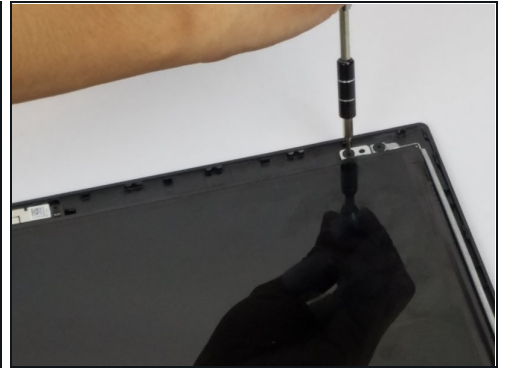
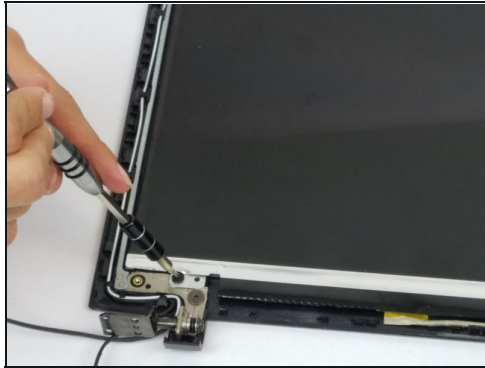
- Using a pair of [tweezers](#), remove the two stickers on the bottom of the screen.
- Unscrew the two screws underneath.

## Step 10



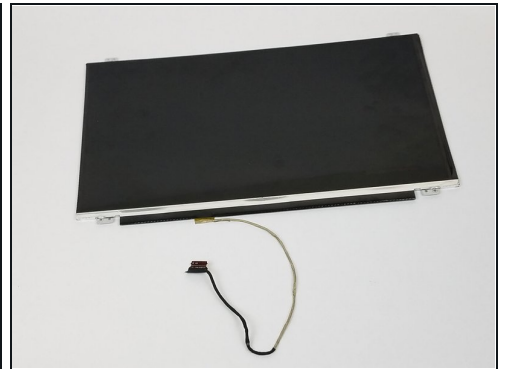
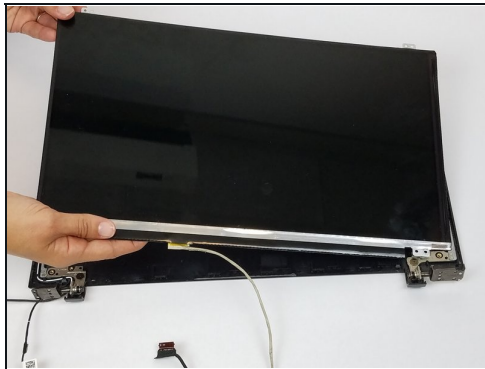
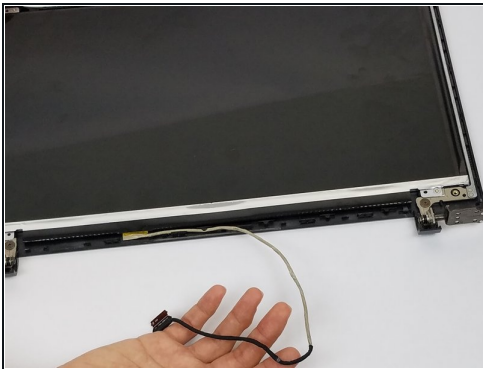
- Stick the plastic opening tool underneath the screen bezel and run it along the edge of the screen.
- ① Loosen each hinge separately, it would be more difficult otherwise.

## Step 11



- Unscrew the four inner screws around the screen.
- ⓘ Leave the two outer screws on the top alone.

## Step 12



- ⓘ Mind the cable on the bottom of the screen.
- Simply lift the screen out.

---

To reassemble your device, follow these instructions in reverse order.