



PlayStation scph-1001 Eye replacement

Written By: Walker wallace



**TOOLS:**

- [Phillips #1 Screwdriver](#) (1)

**PARTS:**

- [PlayStation 1 eye](#) (1)

Step 1 — Eye



- This is your PlayStation before you do this teardown.

Step 2



- Now take the 5 black screws out of the case.

Step 3



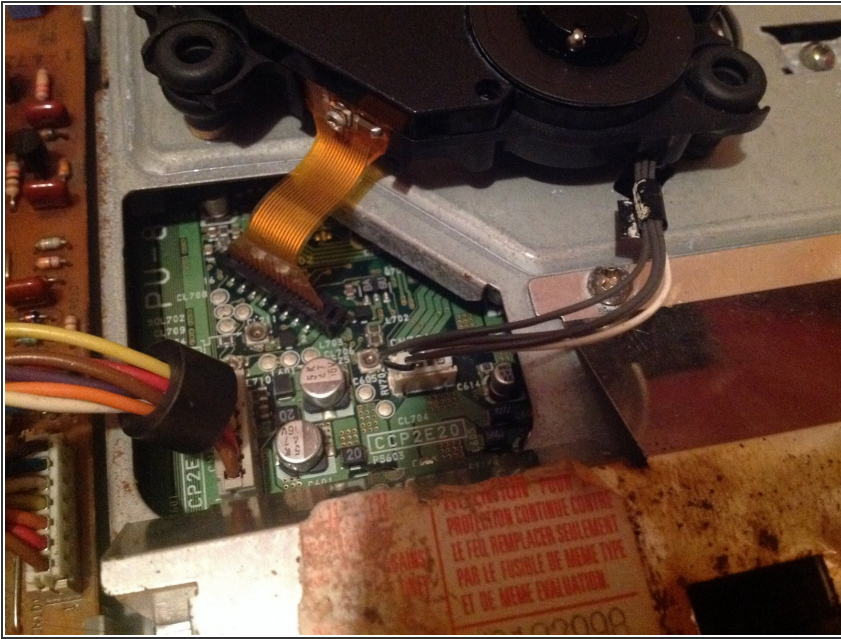
- Now flip the system back over to its top. *'Be sure not to drop the top when you pick it up.'*

Step 4



- Pick up on the top case after you have flipped it over. This will have a little resistance but this should not break anything if you have all of the five screws out of the under case.

Step 5



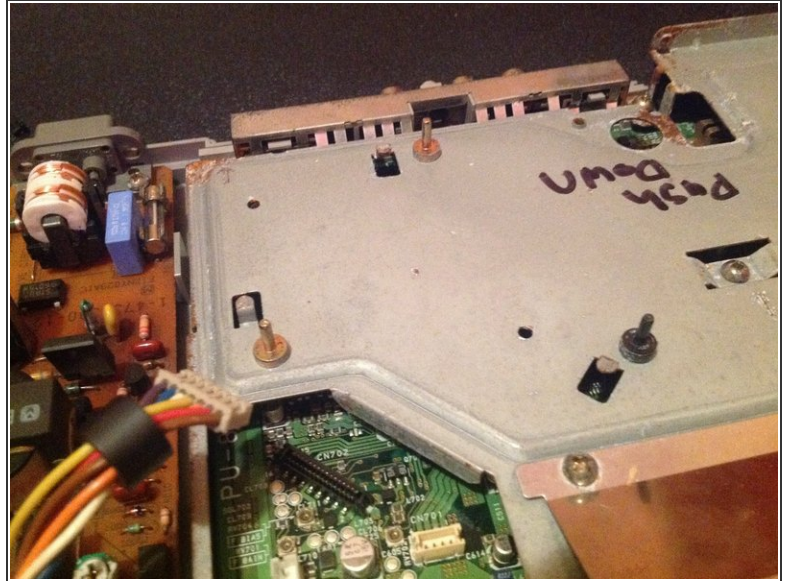
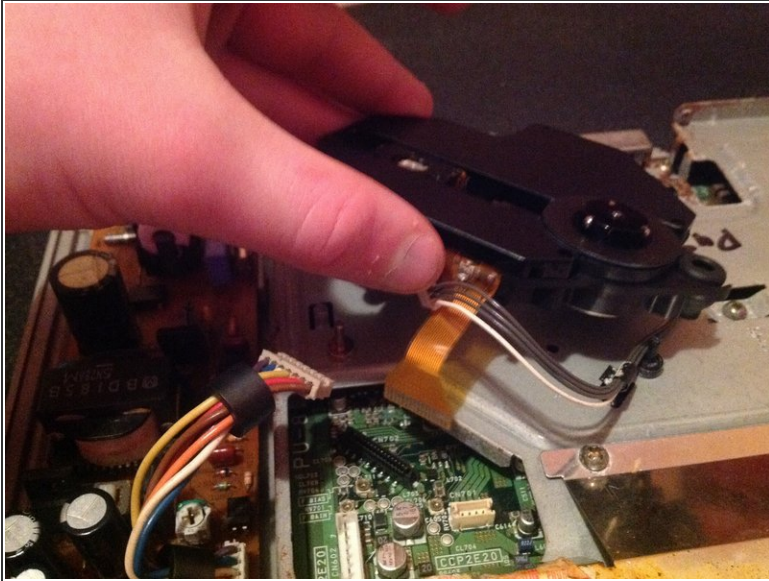
- Then undo the piece holding in the ribbon cable. When you do this grab the side of the black piece holding it in place and pick it up slowly

Step 6



- Then undo the power cable and the eye Cable these should just lift right off.

Step 7



- Now just pick up on the eye and set it off to the side the reassembly

To reassemble your device, follow these instructions in reverse order.