



# Canon EOS Rebel G Top Panel Replacement

Removing the top panel of device.

Written By: Zach



---

# INTRODUCTION

This guide shows you how to install the top panel of the camera.

---

## TOOLS:

- [Soldering Workstation](#) (1)
  - [Phillips #00 Screwdriver](#) (1)
-

## Step 1 — Front Panel



- Using a #00 Phillips screw driver, remove three 4.4 mm Phillips screws as indicated by the red circles.

## Step 2



- Using your finger, peel back the textured grip so the components are separated.



### Step 3



- Using the flat end of a spudger, loosen the connection between the front panel and the device.
- Remove the front panel using your hands.

### Step 4 — Top Panel



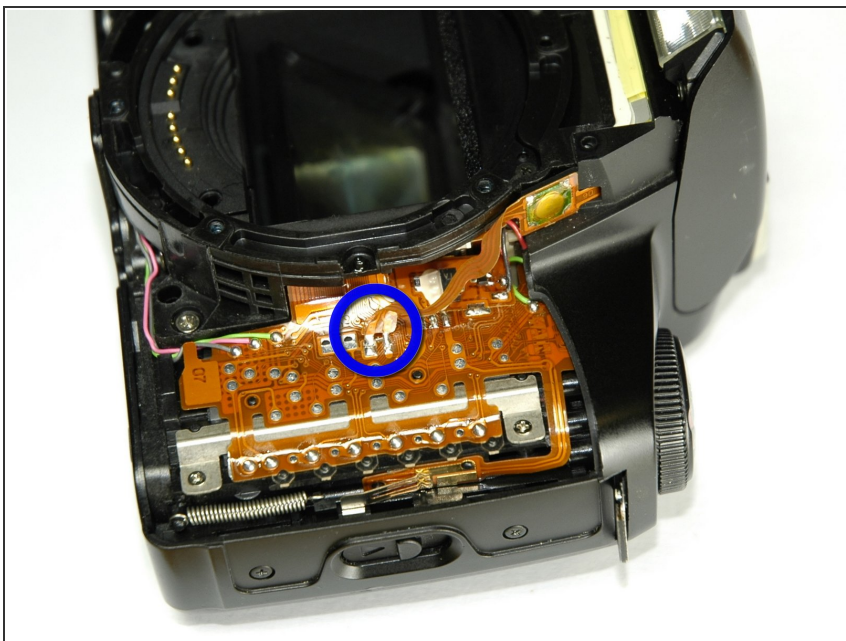
- Turn Camera over.
- Using a #00 Phillips screw driver, unscrew the two 4.9 mm Phillips screws located on either side of the viewfinder.

## Step 5



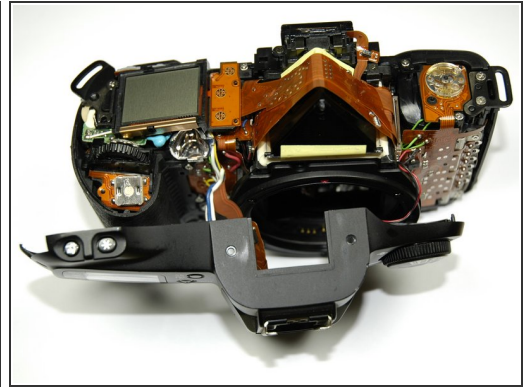
- Using a #00 Phillips screw driver, unscrew the one 5.7 mm Phillips screw located next to the LCD screen.

## Step 6



- Lay the camera on its back.
- Unsolder the flash connection from the motherboard as noted by the blue circle.

## Step 7



- Remove the top panel by lifting it from the back, pushing it forward over the camera and letting it rotate down in front of the camera.

To reassemble your device, follow these instructions in reverse order.