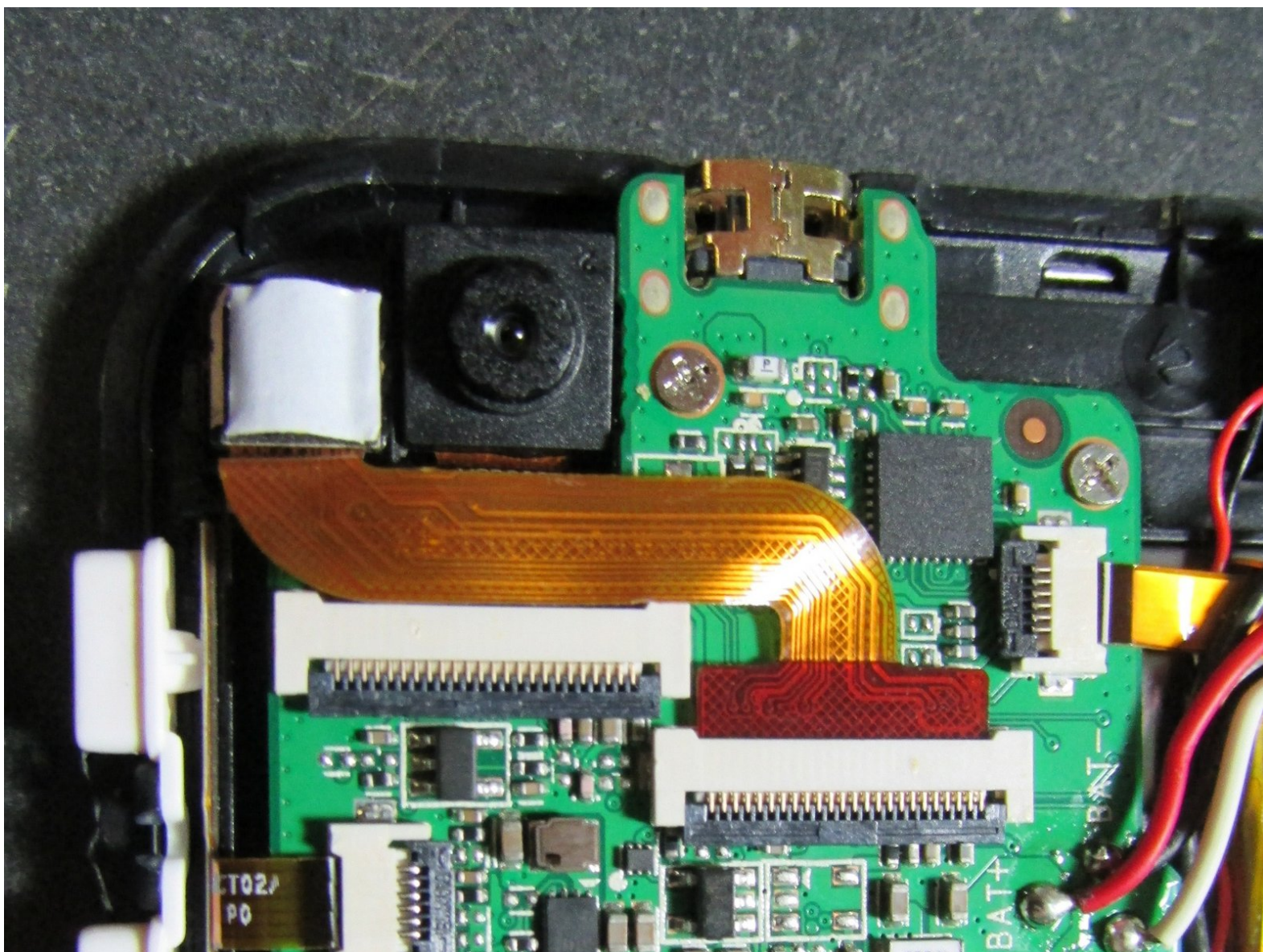




# NuVision TM800A510L Rear Camera Replacement

If the camera shorts out, dies or the lenses get scratched, camera replacement might be necessary. This guide should help in how to do this process.

Written By: Kelsey Riggs



This document was generated on 2020-11-26 05:35:02 AM (MST).

---

## INTRODUCTION

Most of your time will be getting the back off of the device. The cameras are held down with a little adhesive but are relatively easy to remove.

---

### TOOLS:

- [Heat Gun](#) (1)
  - [iFixit Opening Tools](#) (1)
-

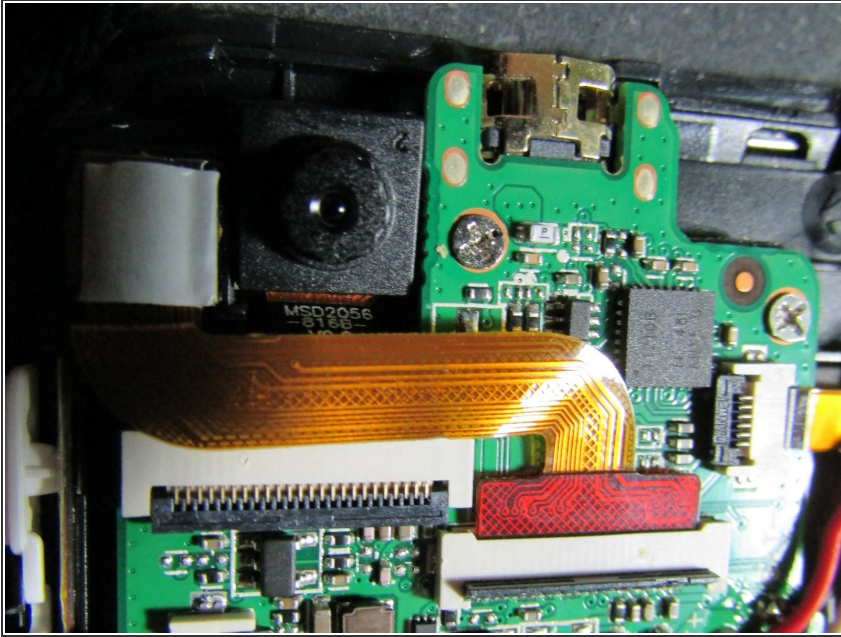
## Step 1 — Rear Camera



- Use a Heat Gun to heat the sides of the device one at a time. The Heat Gun will loosen the adhesive.
- Use thin tools to pry the back of the device off.
- ⓘ Metal tools may work best but may also scratch the device. Plastic prying tools can also be used.
- ⚠ Be careful around the power and volume buttons.

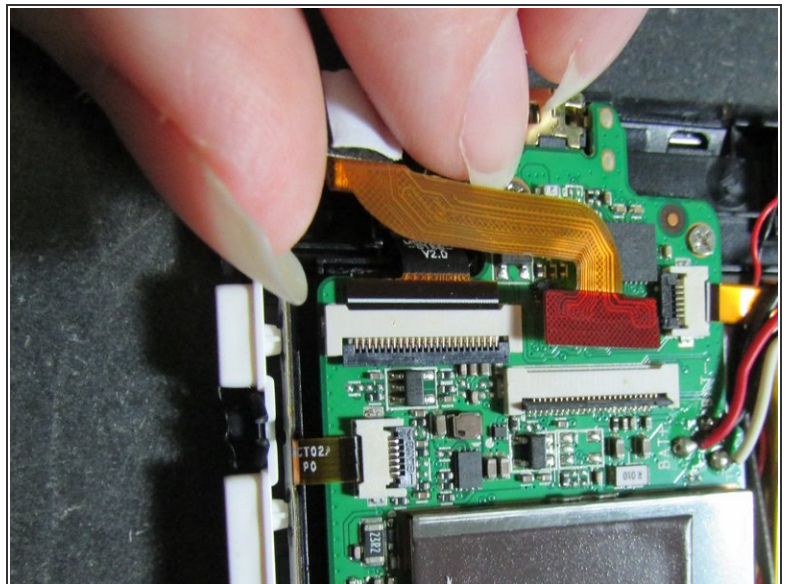
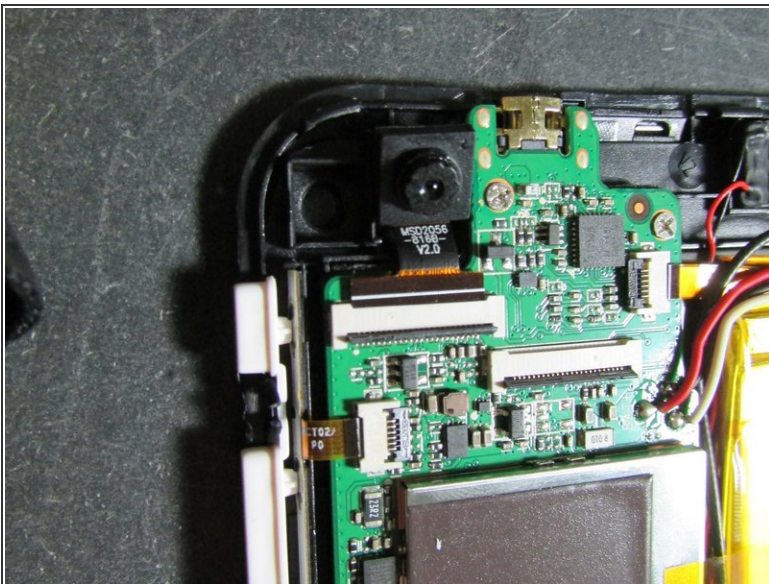


## Step 2



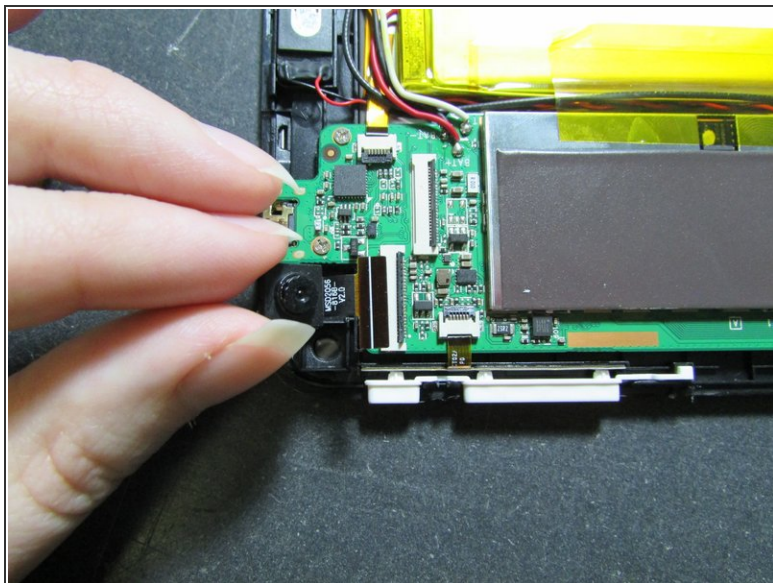
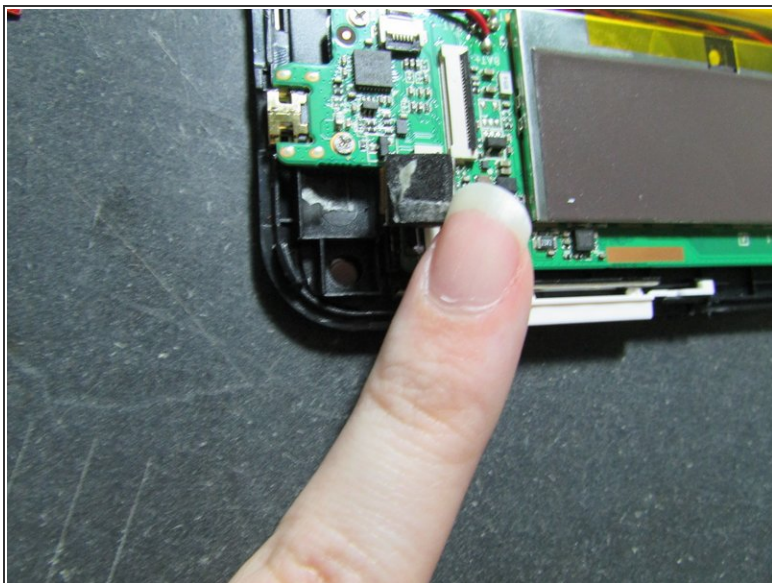
- There are two different cameras and each have different ribbons.
- Unlock both ribbons by flipping the black bar up.

## Step 3



- The camera facing towards the table lifts out easily, so go ahead and take that one out.
- ⓘ This works out well, if this is the camera you are most concerned about.
- ⓘ If you are more concerned the one facing you, move on to the next step.

## Step 4



⚠ This camera is held down with adhesive, so you must be careful when prying it.

⚠ GO SLOW!

- Camera pulls up and out of its slot easily.

To reassemble your device, follow these instructions in reverse order.

Be advised that you will need to replace the adhesive.