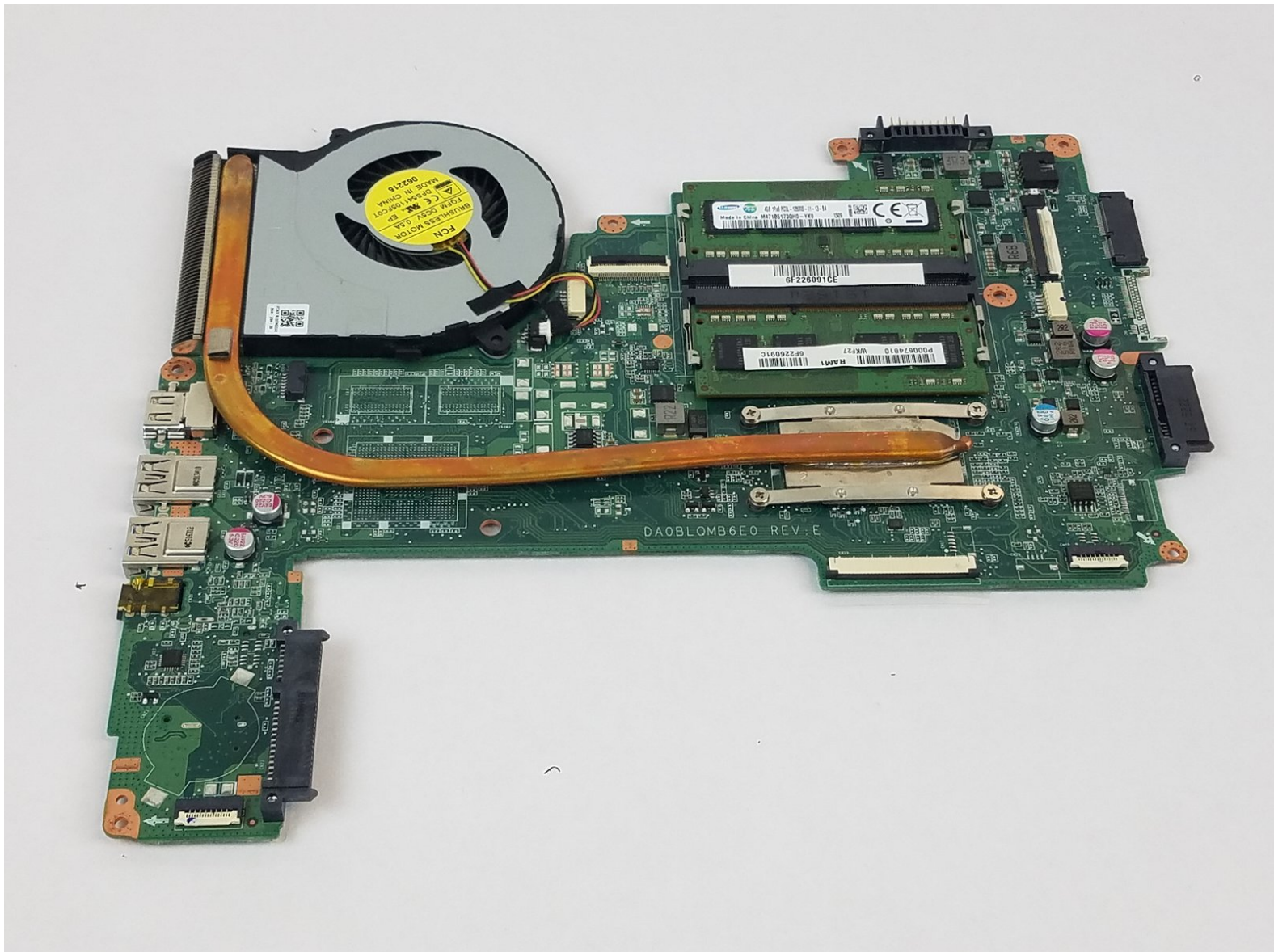




# Toshiba Satellite C55-C5240 Motherboard Replacement

This guide will explain how to remove the motherboard.

Written By: Abdel Feliciano Gonzalez



---

## INTRODUCTION

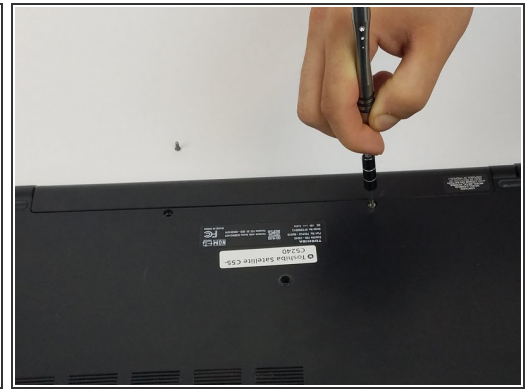
The motherboard is a large and central part to the laptop. Most components either connect or interface with it in some manner. Because there is a lot involved, this guide will show how to remove it properly.




### TOOLS:

- [iFixit Opening Tools](#) (1)
  - [Phillips #1 Screwdriver](#) (1)
-

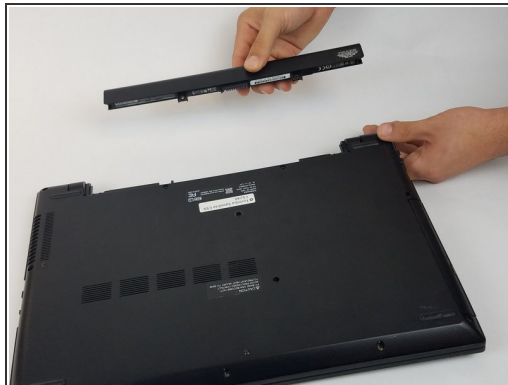
## Step 1 — Battery



 Make sure you turn off the laptop before starting.

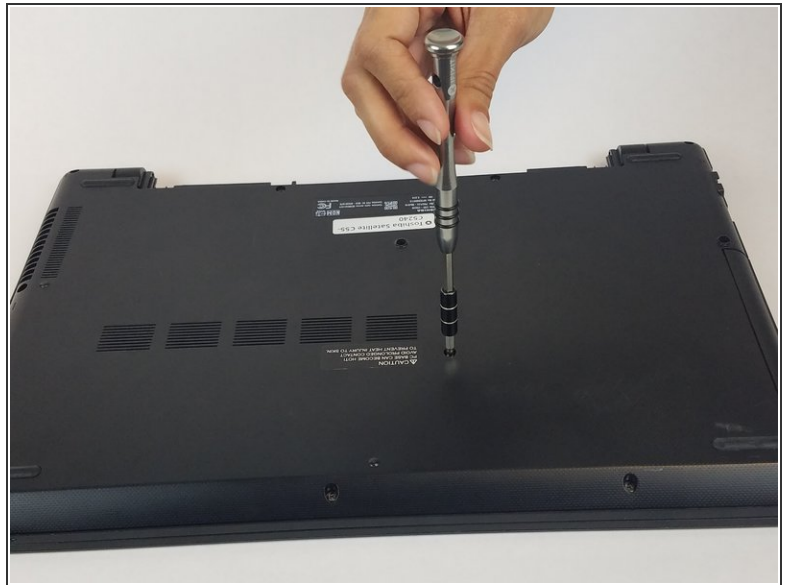
- Remove the two 6.5mm PH1 Phillips screws securing the battery.

## Step 2



- Pull the battery out, keeping it flat and parallel to the laptop so that it slides out easily.

### Step 3 — Back cover



- Unscrew the ten 6.5mm PH1 Phillips head screws that hold down the back cover.

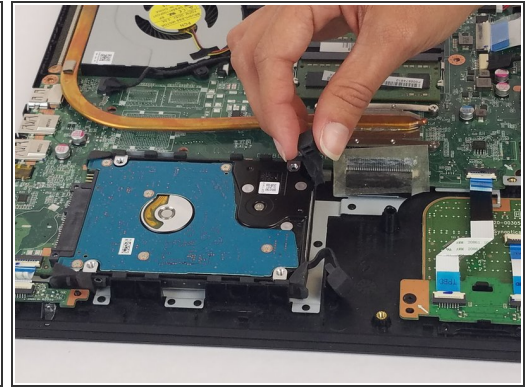
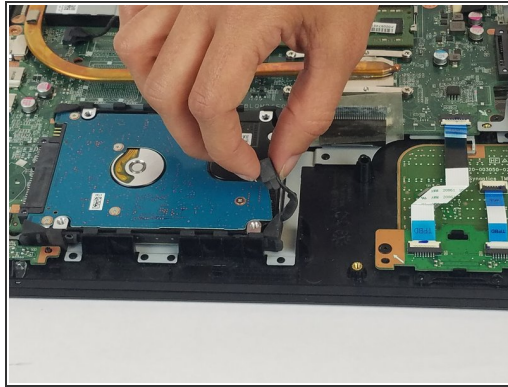
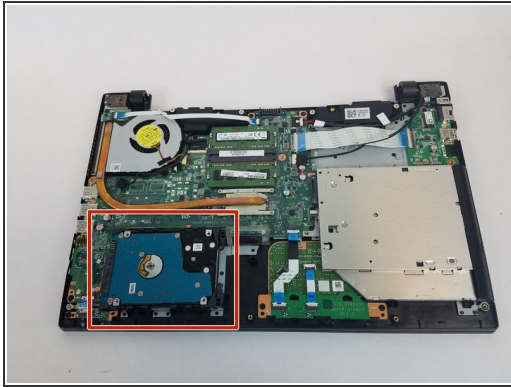
### Step 4



- Using the plastic opening tools, open the back cover and remove it from the laptop.
- ⓘ It is recommended that you start from a corner and run the tool along the edge of the cover.
- ⚠ Be careful not to bend or crack the cover.

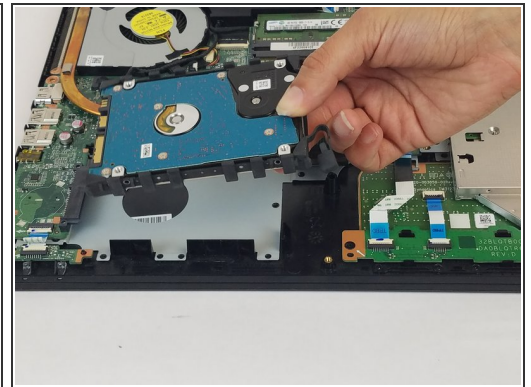
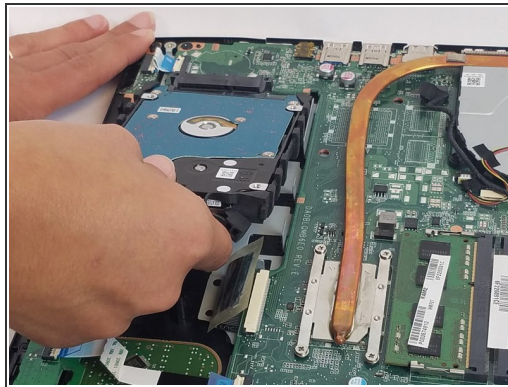
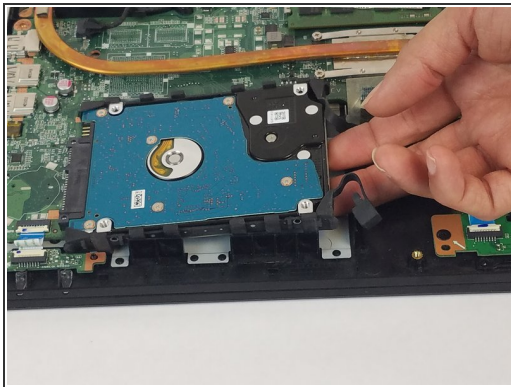


## Step 5 — Hard Drive



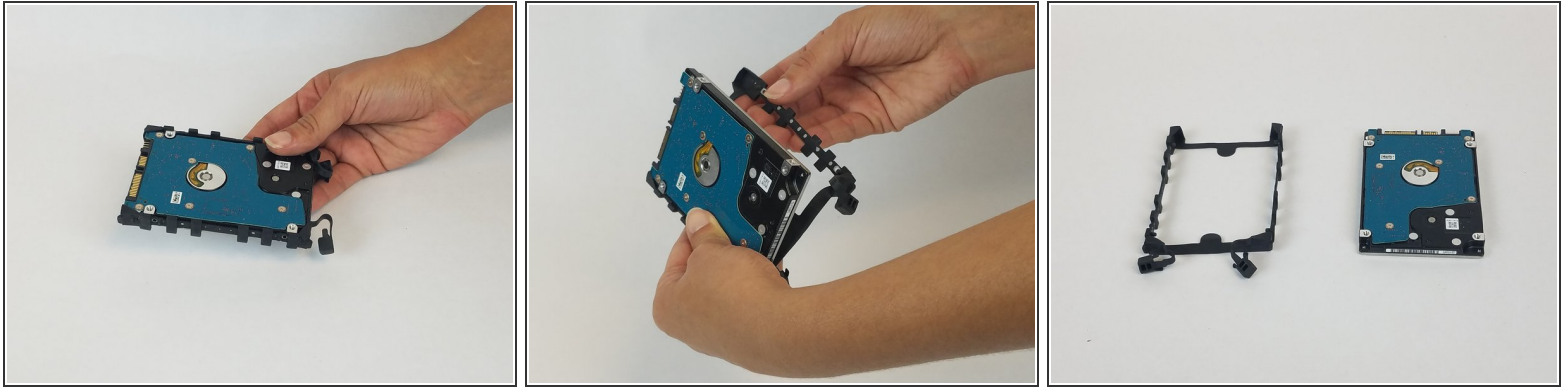
- The hard drive is on the bottom left side.
- Remove both releases from the rubber hard drive mount.

## Step 6



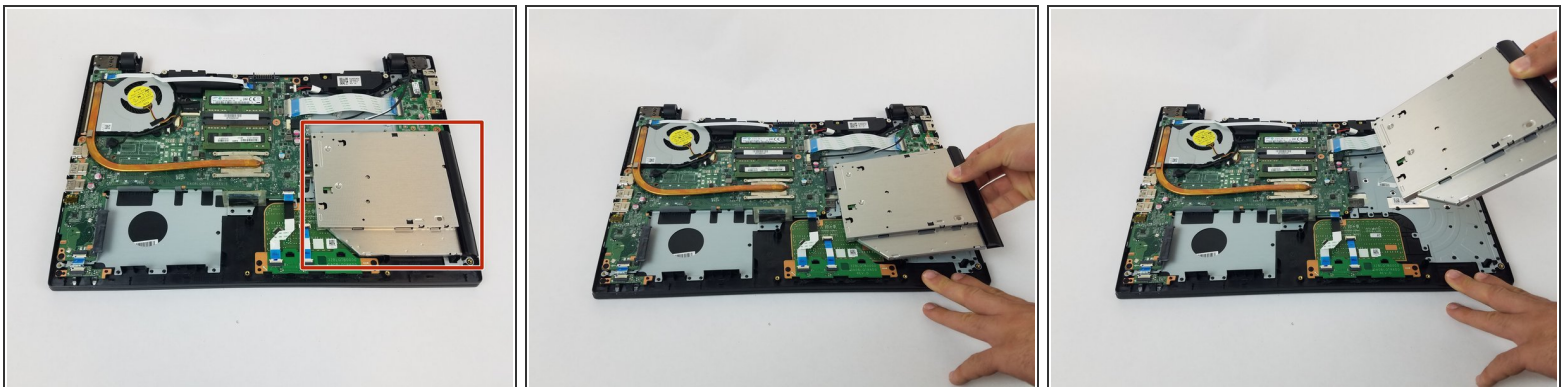
- Lift the hard drive from underneath on the right side.
- While holding it up, pull it away from its connector so that it disconnects.

## Step 7



- Peel off the rubber hard drive mount.

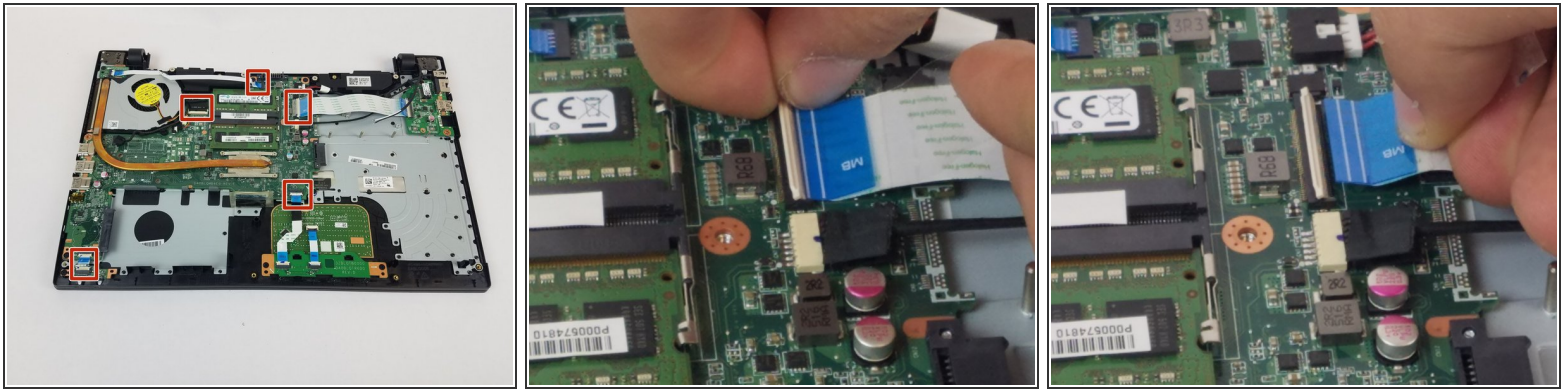
## Step 8 — Motherboard



- Slide the disk drive to the right and gently lift up the disk out the laptop.

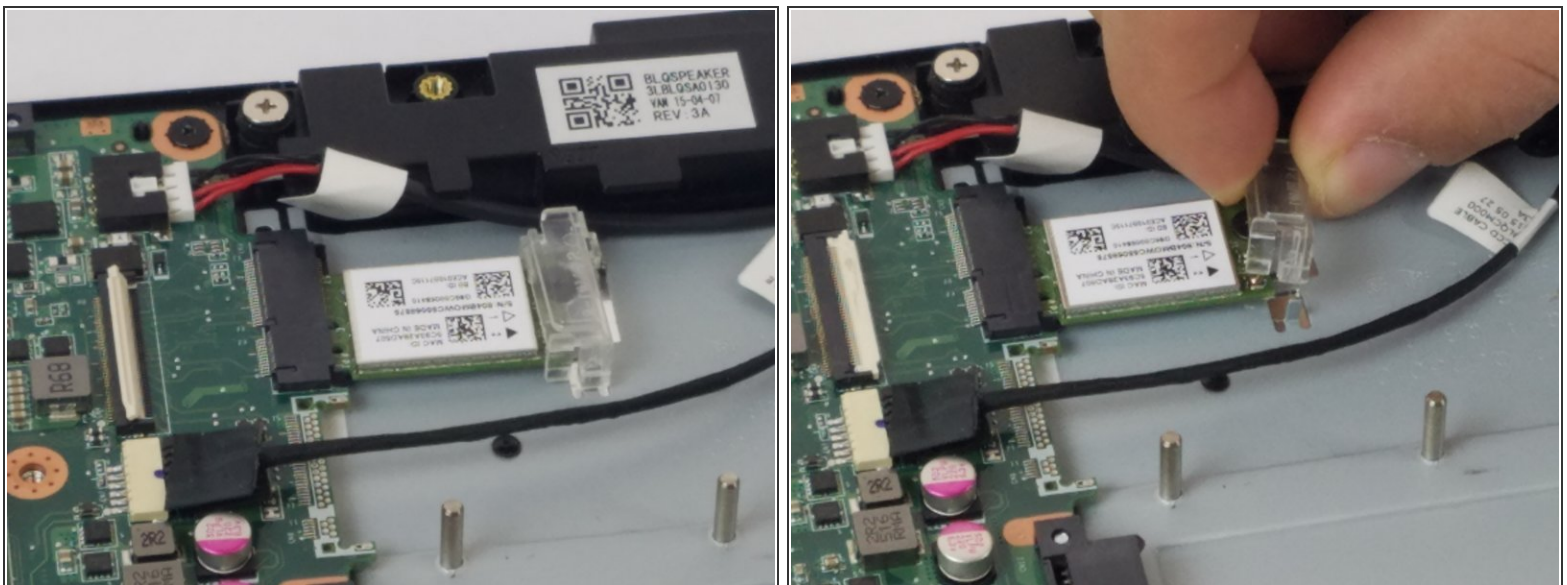


## Step 9



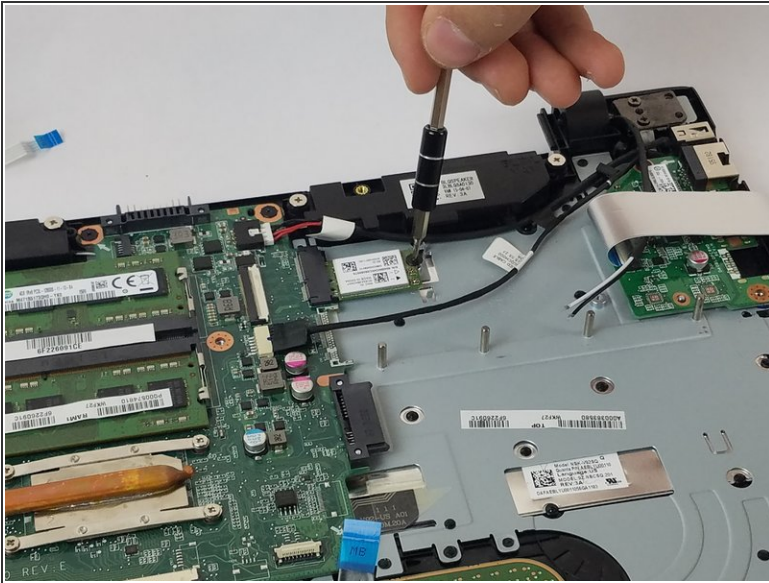
- Disconnect the 5 ribbon cables.
- To remove, unlock the latch of each ribbon and pull it out.

## Step 10



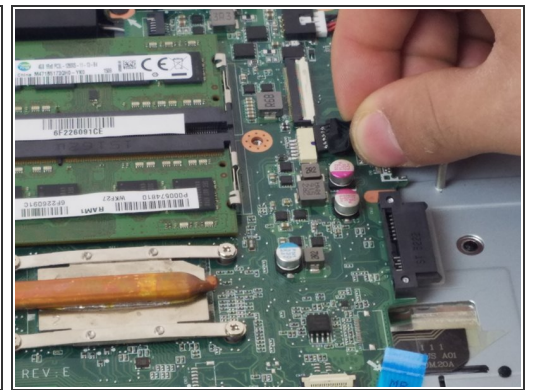
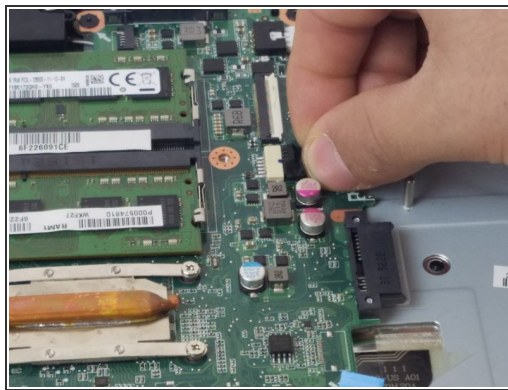
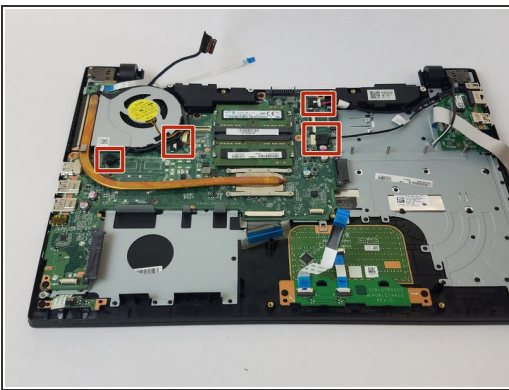
- There is a wifi card underneath the large ribbon cable on the right.
- Remove the plastic piece that covers the screw.

## Step 11



- Unscrew the PH1 Phillips head 3.0 mm long screw holding it in.
- Pull out the WiFi card.

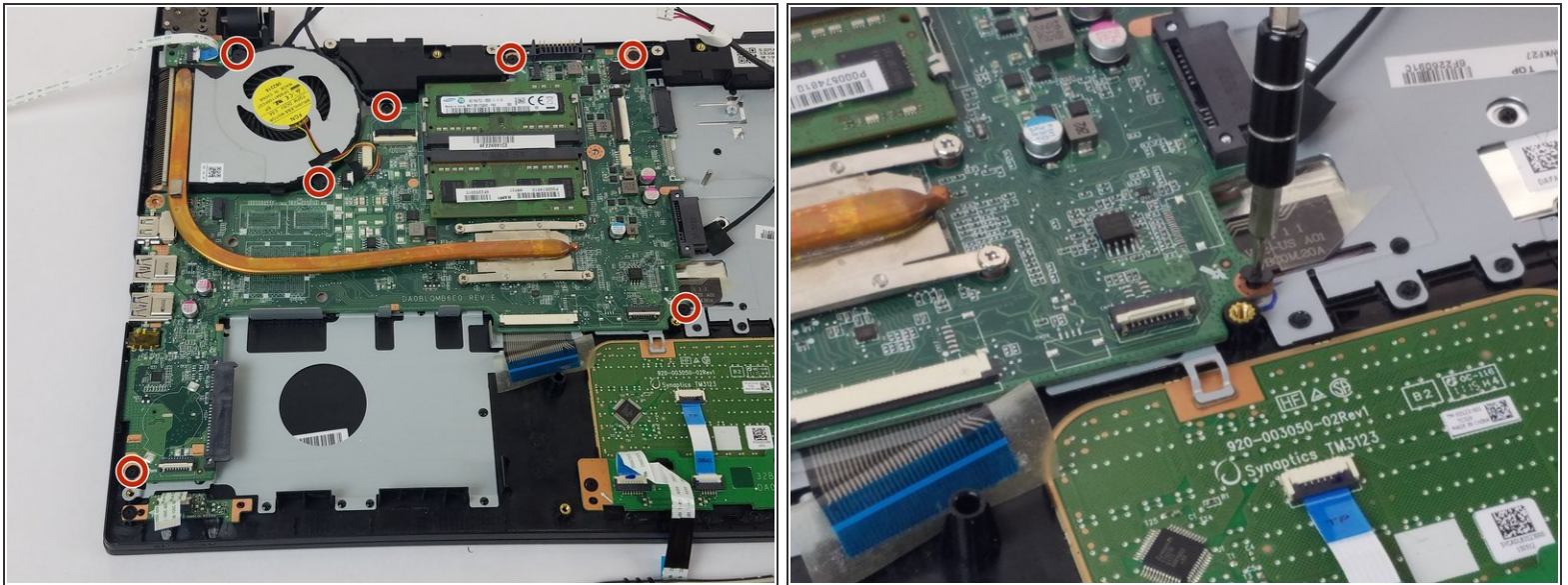
## Step 12



- Disconnect the 4 regular cables.
- ⚠ Carefully pull the cable parallel to the board, not up or at an angle.

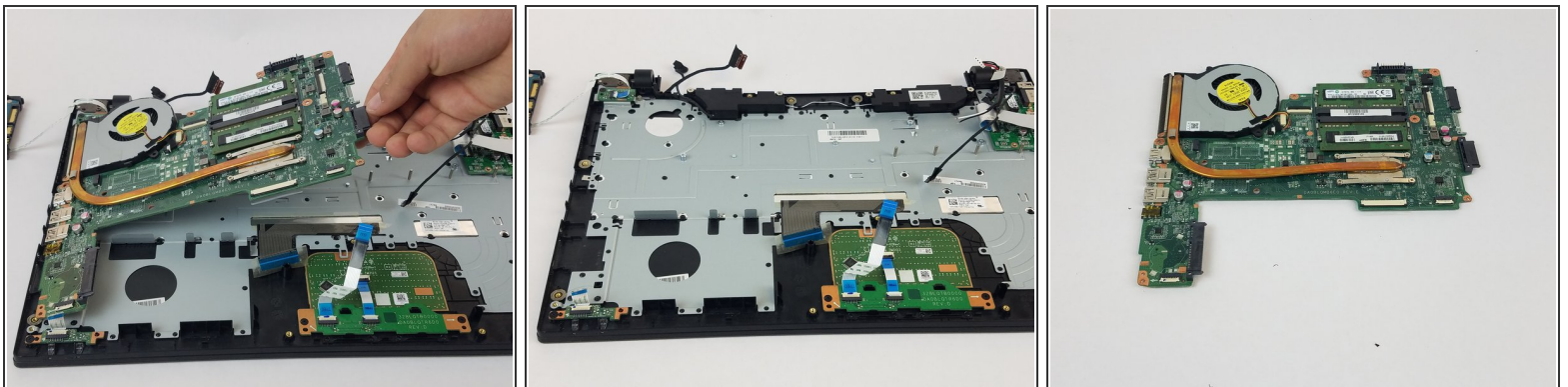


## Step 13



- Unscrew the seven PH1 Phillips head 3.0 mm long screws that hold the motherboard in place.

## Step 14



- Carefully lift the motherboard from the edges.

To reassemble your device, follow these instructions in reverse order.