



# Blu Studio 5.5 Sub PCBA Replacement

The sub PCBA on the BLU studio 5.5 holds the...

Written By: Alec Coleman



# INTRODUCTION

The sub PCBA on the BLU studio 5.5 holds the charging port and connects to both the speaker and motherboard assembly so it holds a major role in many functionalities that you seek in your mobile device. This guide will demonstrate step by step how to remove and replace this crucial component.

## TOOLS:

[iFixit Opening Tool](#) (1)

*Not essential, but may be easier than opening device by hand*

[Phillips #000 Screwdriver](#) (1)

## Step 1 — Battery



- Locate the notch to remove the back panel at the lower left corner of the panel.
- Insert the plastic opening tool or a fingernail into the notch.
- Apply force upwards until back panel becomes loosened.

## Step 2



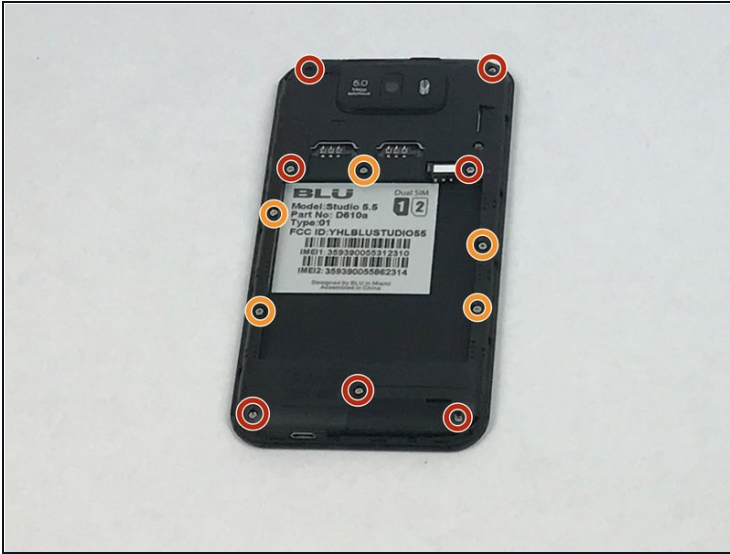
- Remove the loosened back panel and set aside.
- Locate the notch to remove the battery.

## Step 3



- Insert a plastic opening tool or your fingernail into the notch and apply force upwards until the battery is loosened.
- Remove the battery and set aside.

## Step 4 — Back Panel Assembly



- Locate all twelve screws along the back panel:
  - Seven 5mm screws.
  - Five 3.5mm screws.
- Using a Phillips #000 screwdriver, remove all twelve screws.



## Step 5



- Now that all the screws have been removed, use a plastic opening tool to carefully pry at each of the corners until loosened.

**⚠ Be extra careful when prying open as it may damage or snap the thin sides of the panel.**

- Place the plastic opening tool inside the loosened panel and gently push upwards and move along the phone to remove the back panel.
- Remove the panel as if you were turning the page of a book.

## Step 6 — Sub PCBA



- Locate the screw holding down the sub PCBA.
- Remove the screw using the Phillips #000 screwdriver.

## Step 7



- Locate the gold plated cable connecting the sub PCBA to the motherboard.
- Locate the flex cable connector just above the sub PCBA screw.
- Using [tweezers](#), detach both cables from the sub PCBA.

## Step 8



- ① Note the red and blue wires connecting the sub PCBA to the speakers.
- ☑ Either the speaker will need to be loosened and removed alongside the sub PCBA or the wires disconnected and resoldered during reassembly.
- Using tweezers, grab the PCBA and remove gently from assembly.

---

To reassemble your device, follow these instructions in reverse order.