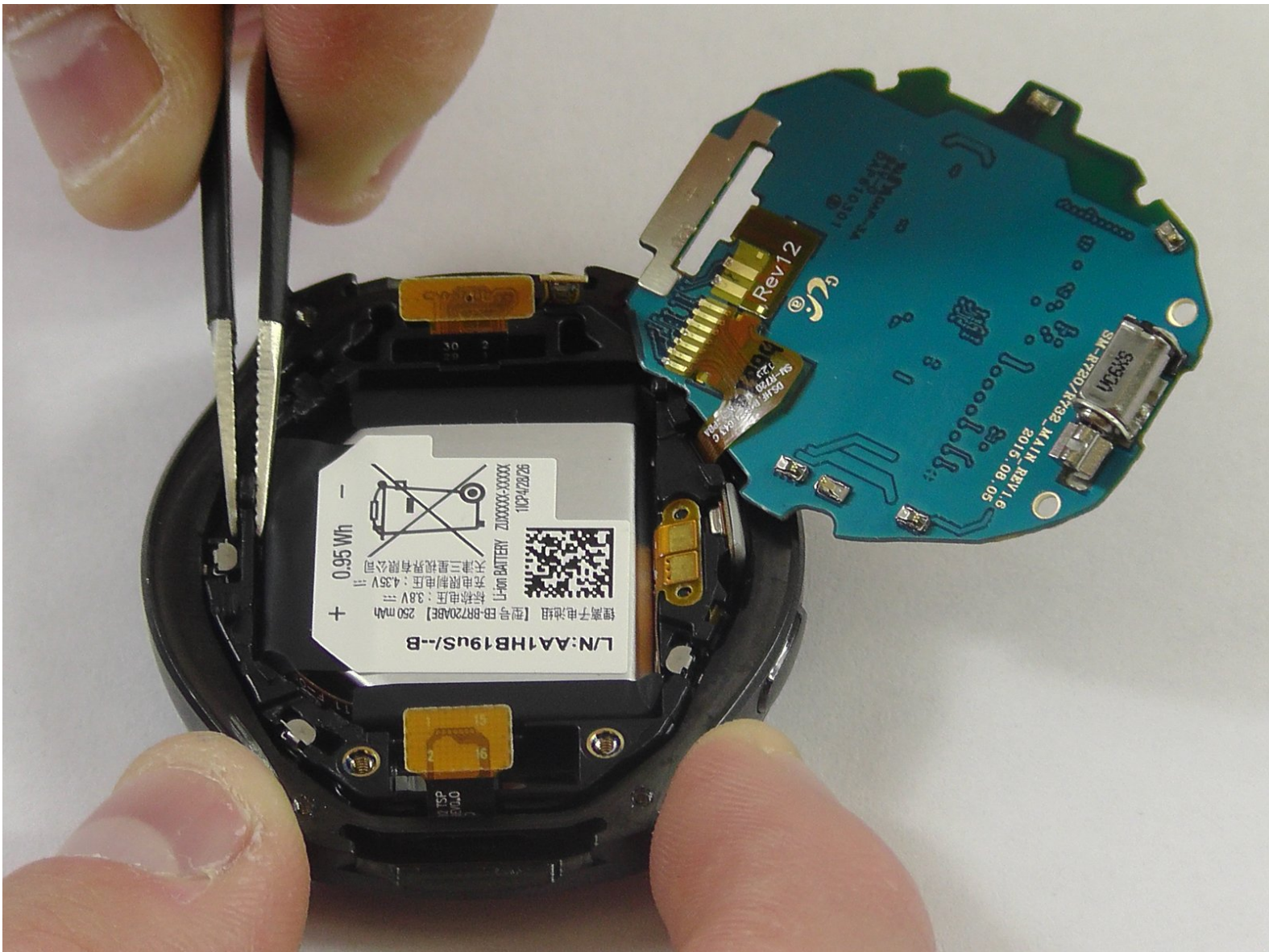




Samsung Gear S2 Battery Replacement

Use this guide to replace the battery on your Samsung Gear S2 smartwatch.

Written By: Jacob Baldwin



INTRODUCTION

Does your watch battery last less than a day with minimal use, or does the watch only power on when connected to the charger? Replacing the battery may fix these problems.



TOOLS:

- [Tri-point Y0 Screwdriver](#) (1)
- [Heavy-Duty Spudger](#) (1)
- [iFixit Opening Tool](#) (1)
- [Phillips #00 Screwdriver](#) (1)
- [Tweezers](#) (1)



PARTS:

- [Samsung Gear S2 Battery](#) (1)

Step 1 — Watch Strap



- Flip the watch over so that the face is down.
- Using a Y#0 screwdriver, unscrew the four 3.5 millimeter tri-head screws.

⚠ Remember to turn off the watch to avoid being shocked.

Step 2



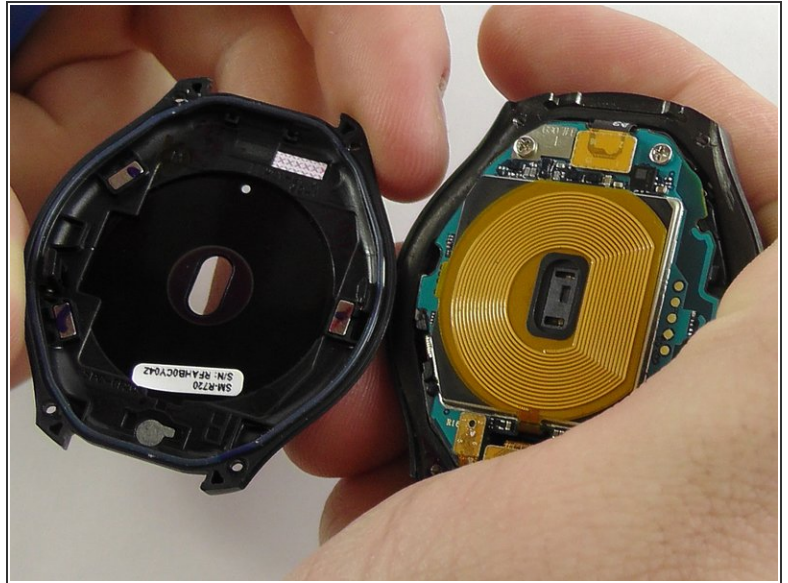
- Using your finger, push forward on the release while pulling up on the strap.
- ❗ You may find it helpful to use the flat end of a spudger to push on the release instead of your finger.

Step 3



- Repeat the procedure from step 2 for the other strap.

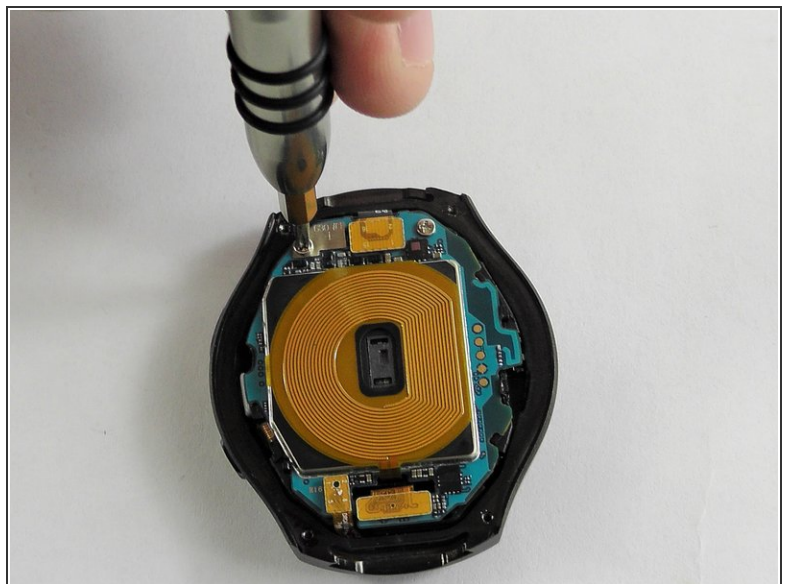
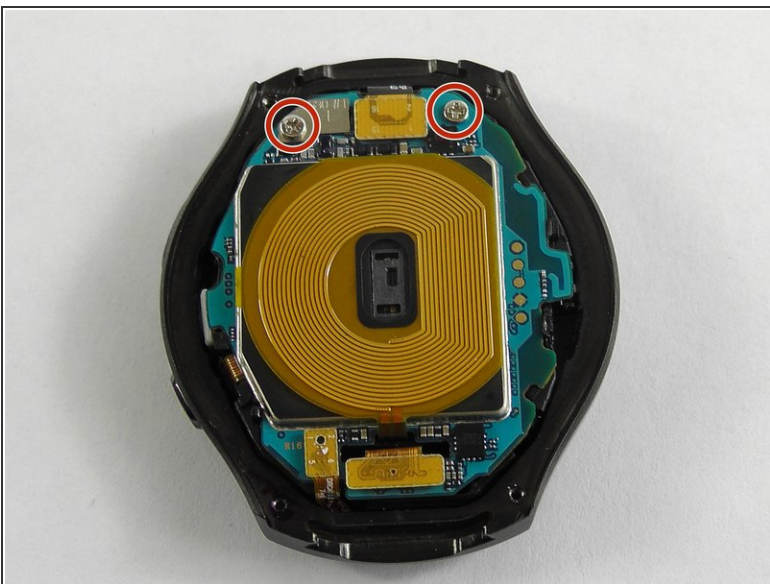
Step 4 — Back



- Insert a plastic opening tool between the top and bottom portions of the case, and gently pry off the back.

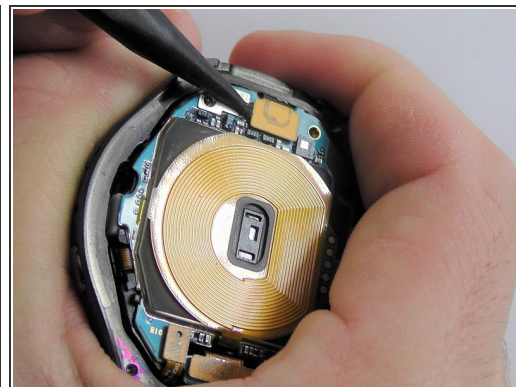
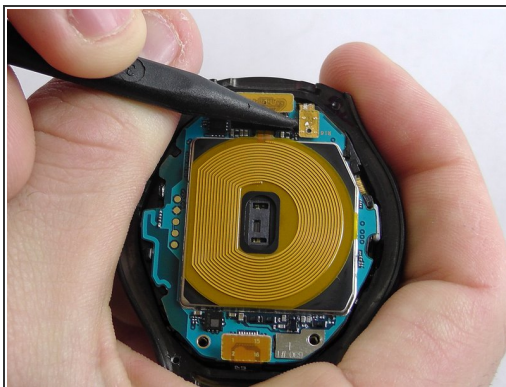
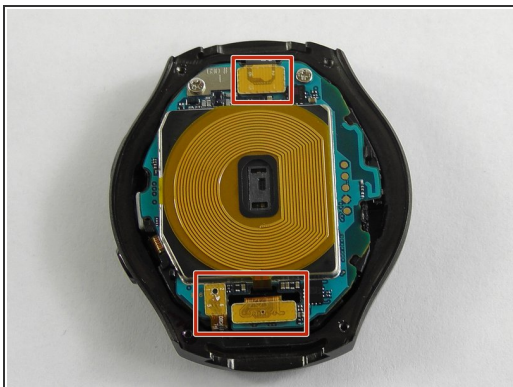
⚠ Do not insert the tool more than 3 millimeters into the case. Inserting more than 3 mm may damage the seal and electric components.

Step 5 — Motherboard



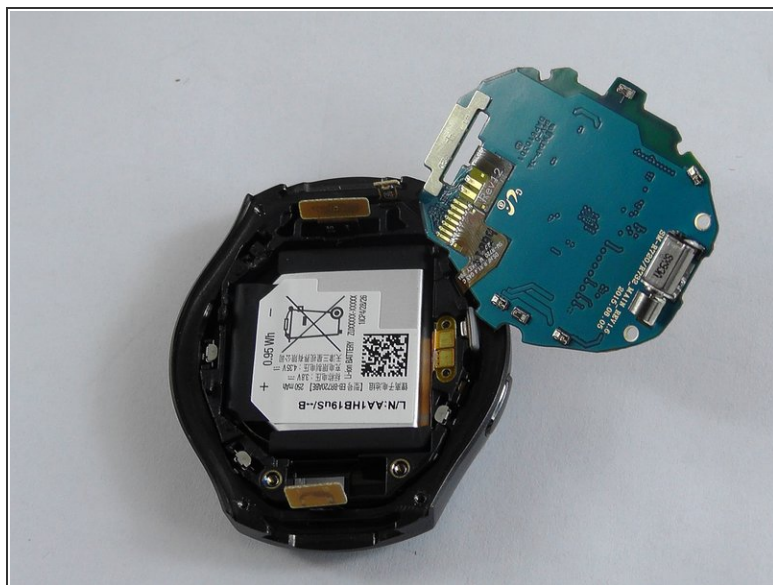
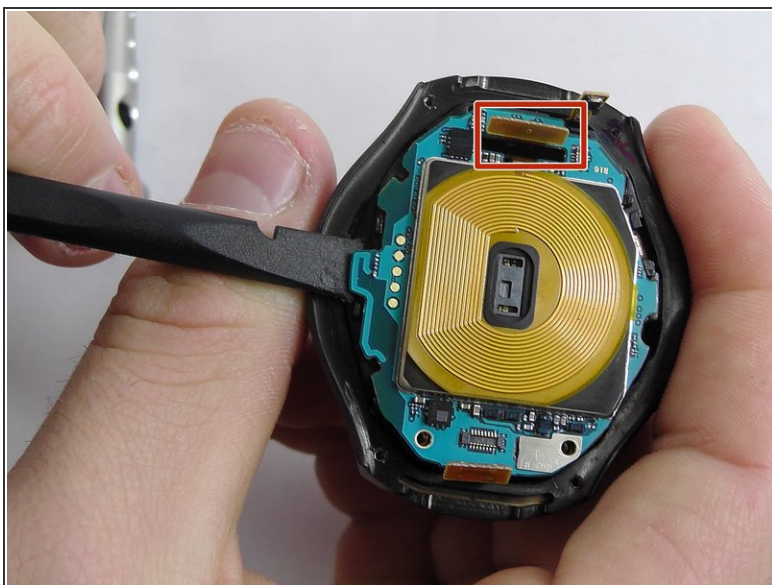
- Using a Philips head #00 screwdriver, remove the two 3.6 millimeter screws.

Step 6



- Using a spudger, pry up the three cables.

Step 7

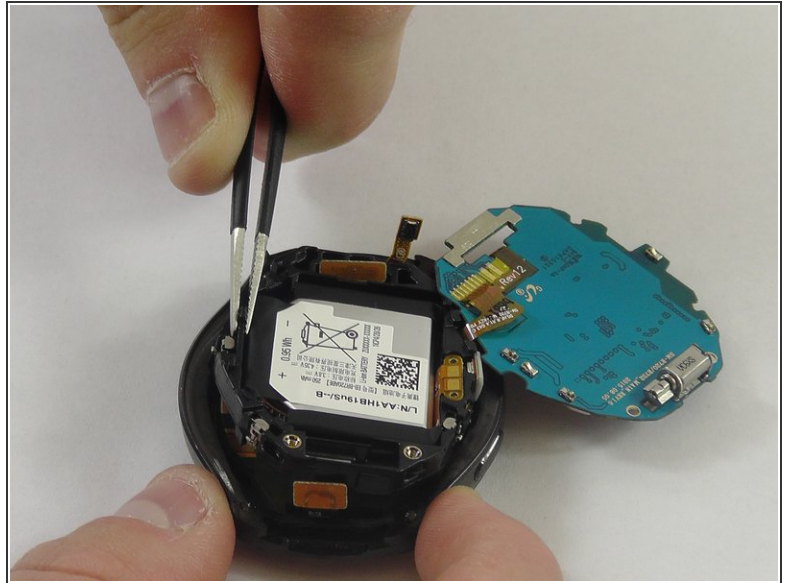
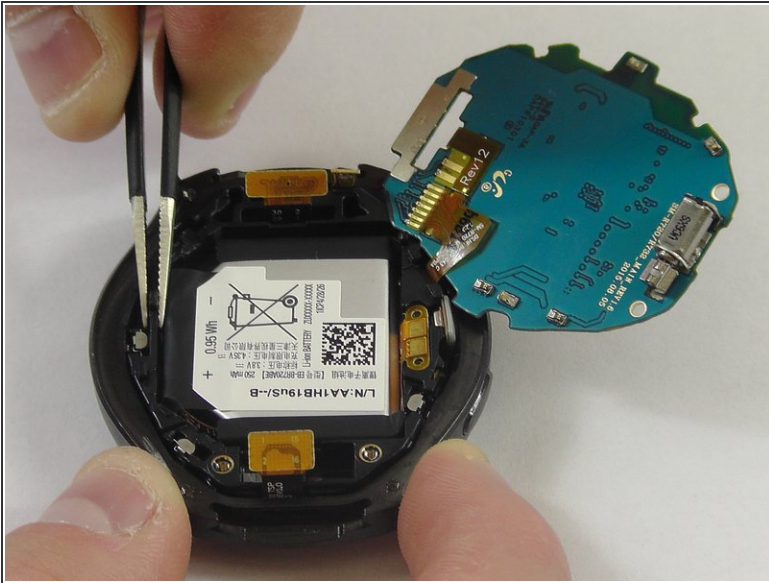


- Using the flat end of a spudger, pry up the motherboard.

⚠ Make sure the cable is fed through the hole to avoid damaging it.

- The motherboard is attached to the battery casing, so place the motherboard in the orientation shown once freed.

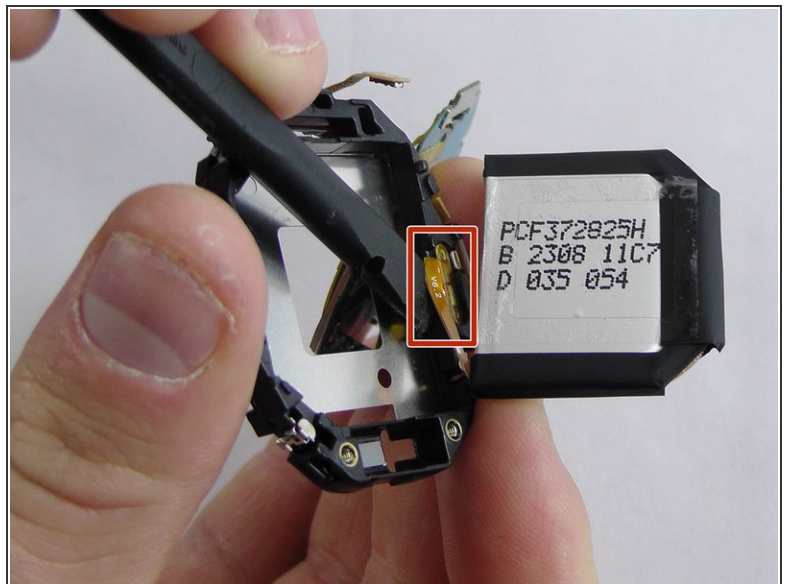
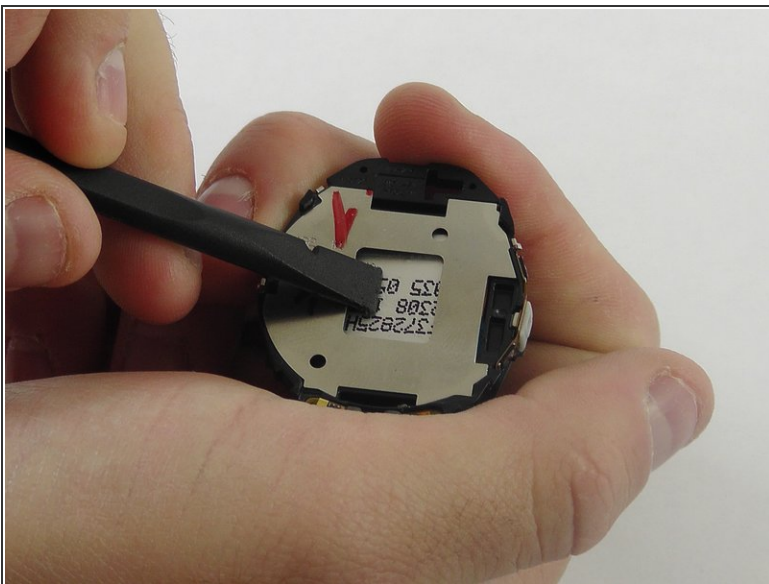
Step 8 — Battery



- Using tweezers, lift the battery casing.

⚠ Make sure the cables are fed through their gaps to avoid damaging them.

Step 9



- Flip the battery casing over and using a spudger, push on the battery to free it from the casing.
- Once the battery is free, use the flat end of a spudger to lift up the battery cable.

To reassemble your device, follow these instructions in reverse order.