



Samsung Galaxy S6 Active Power Button Replacement

Use this guide to access and replace the power...

Written By: Lucia Valbuena



INTRODUCTION

Use this guide to access and replace the power button of your phone.

TOOLS:

[JIS Driver Set](#) (1)

[iFixit Opening Tool](#) (1)

[iOpener](#) (1)

[Suction Handle](#) (1)

[Phillips PH000 Screwdriver](#) (1)

[Tweezers](#) (1)

Step 1 — SIM Card



- Insert your fingernail or a plastic opening tool into the pivot on the side of the SIM tray.
- Pry open the tray to get it out of the socket.

Step 2



- Remove the SIM tray with SIM card from the phone.

Step 3 — Display Assembly



- Heat the front face (sides, top, bottom) of the phone with the iOpener, a hair dryer, or a heat gun for 60 seconds to loosen the adhesive around the edge of the glass.

ⓘ If using an iOpener, heat it in a microwave for thirty seconds.

Step 4



- Attach a suction cup to the lower half of the screen.

Step 5



- Using the suction cup, pull gently the lower half of the panel.

⚠ If you pull too hard you may break the display. If you still feel resistance repeat Step 3, leaving the iOpener on longer.

Step 6



- Once you've opened a large enough gap, insert a plastic tool at the bottom, between the glass and the rest of frame of the phone.
- Slide the plastic opening tool around the screen, prying the display gently away from the body

Step 7



- Pull the lower half of the screen screen with the suction cup while holding down the frame of the phone to separate both components.

⚠ Only lift the lower part of the screen. It is connected with a clip to the top of the motherboard and can rip off if you pull too hard.

Step 8



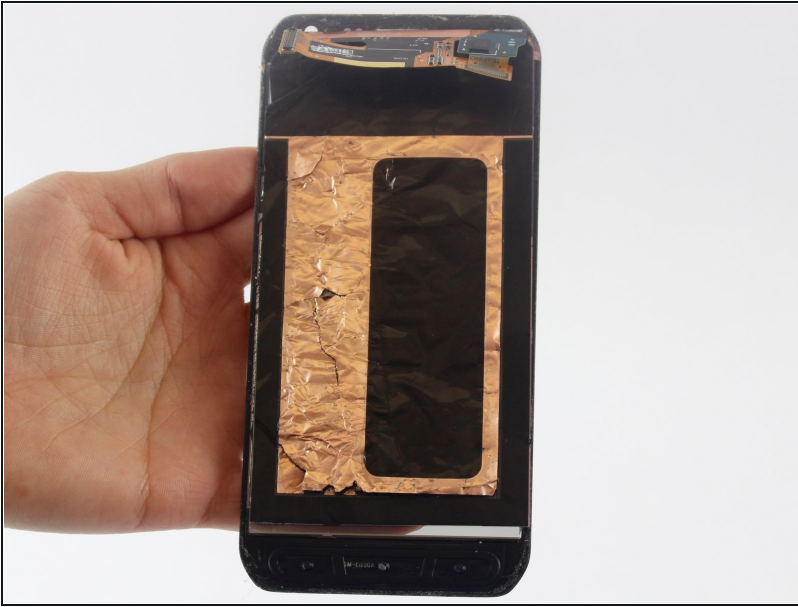
- Once the glass is off, you will see a small clip covering the screen connection to the motherboard at the top of the phone. Use [tweezers](#) to grab the clip by the crease on its side and pull it out.

Step 9



- Undo the screen connection with a plastic tool.

Step 10



- Remove the display assembly (LCD and Digitizer).

Step 11 — Battery



- Use the Phillips Head Screwdriver sized PH000 to remove the sixteen 4mm screws from the frame.

Step 12



- Put a little pressure on the top, on the bottom, and on the sides of the phone to separate the rear case.
- ① You will hear the clips start undoing themselves.

Step 13



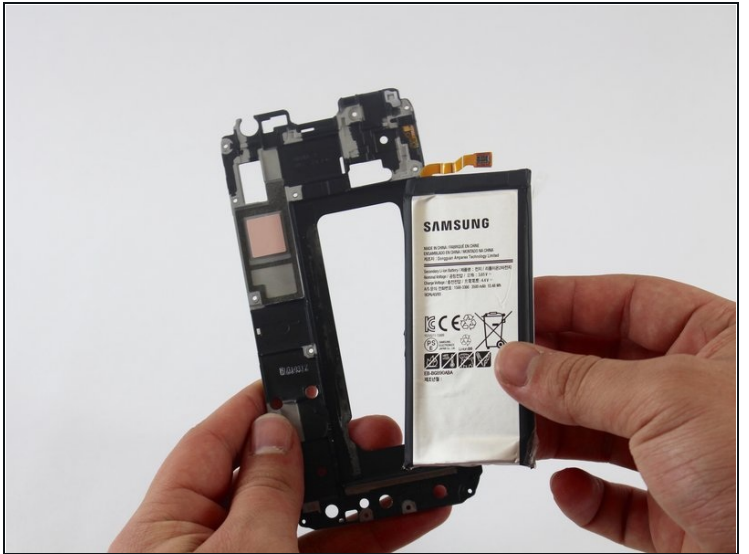
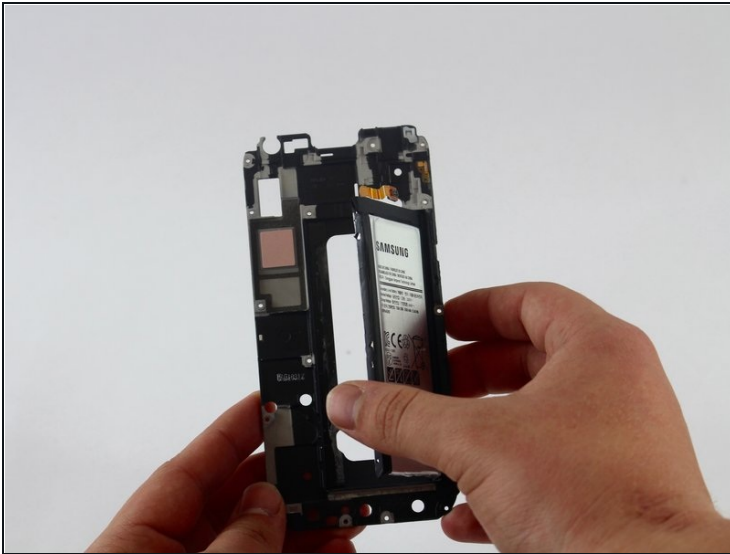
- Once all the clips have popped, pull out the rear case to separate it from the frame with the battery.
- The battery will be on the back side of this frame.

Step 14



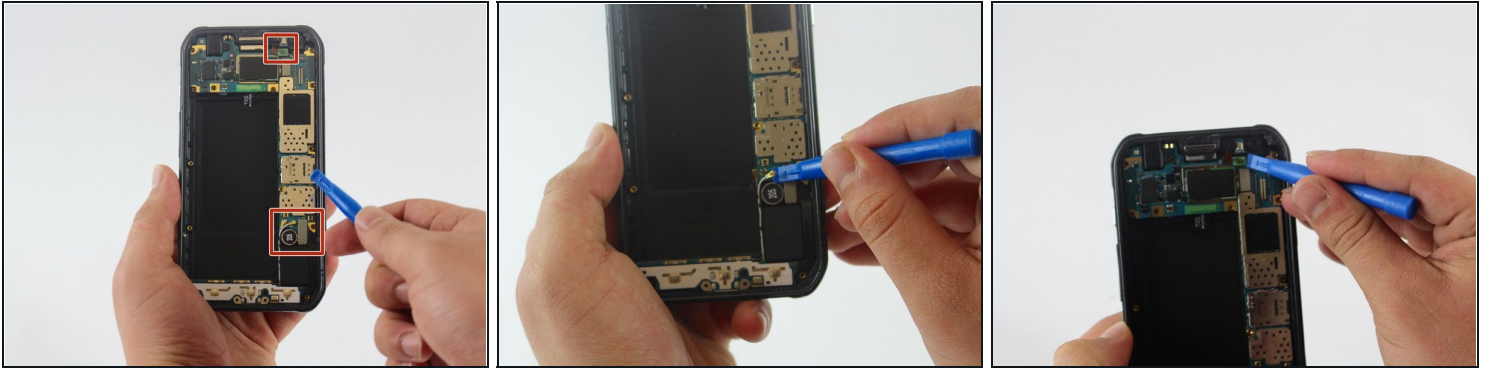
- Insert a plastic opening tool on the side of the frame and pull out the battery.

Step 15



- Remove the battery from the frame.

Step 16 — Motherboard



- Use a plastic tool to undo all the connections in the motherboard.

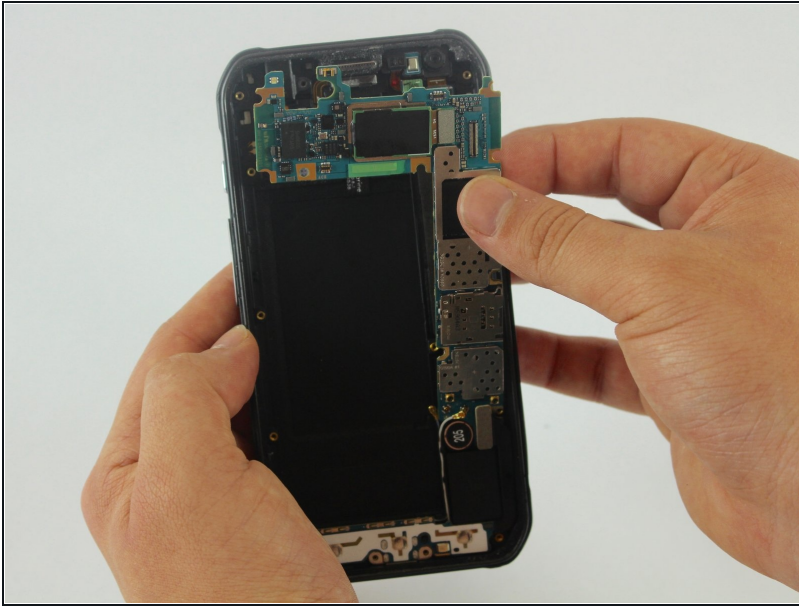
ⓘ There are three connections that have to be removed.

Step 17



- Insert the flats end of the spudger below the motherboard and twist it to pry the board up.

Step 18



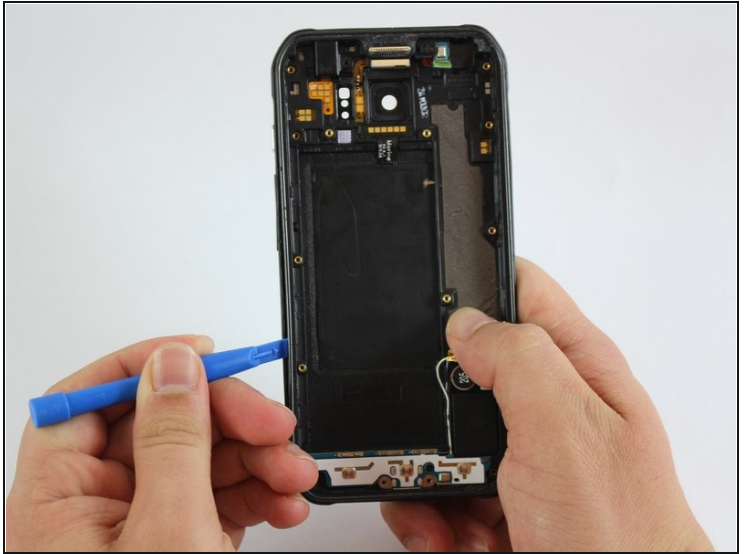
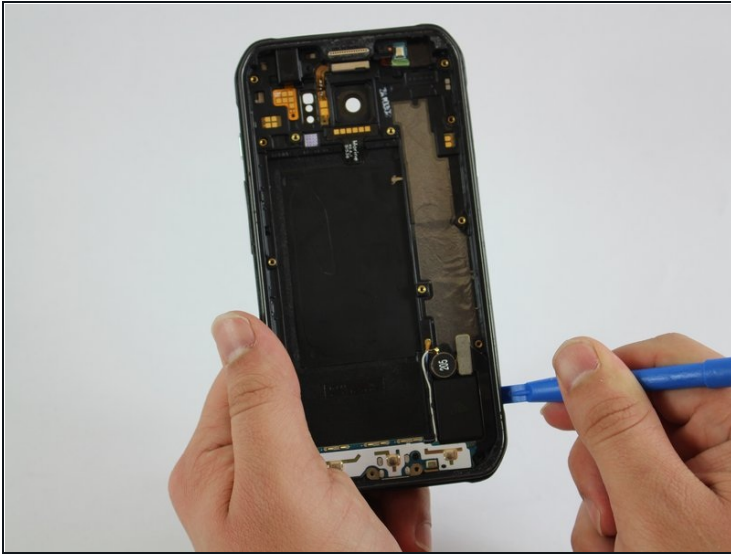
- Remove the motherboard from the rear case.

Step 19 — Power Button



- Put a little pressure on the top, on the bottom, and on the sides of the phone to separate it from the plastic cover.

Step 20



- Once you see a large enough gap, insert a plastic tool between the frame and the plastic cover and slide it around the phone to separate both components.

Step 21



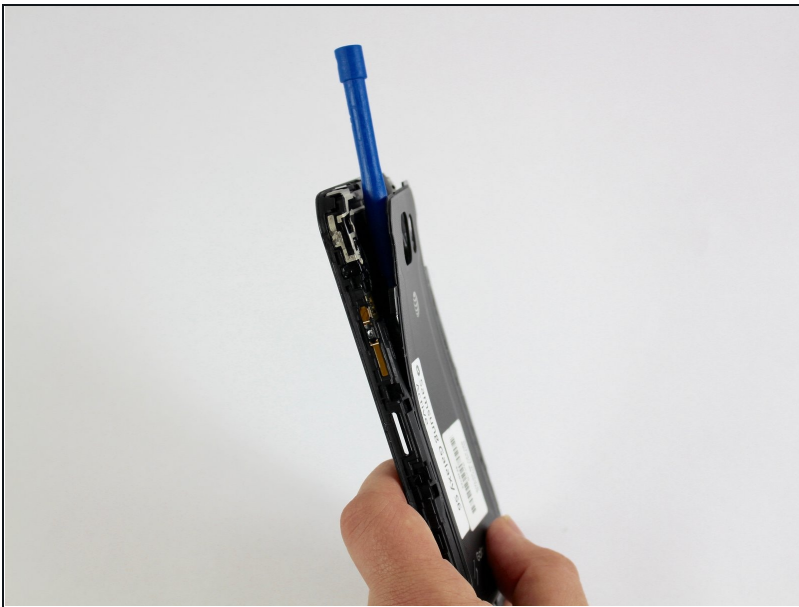
- Remove the plastic cover from the phone.

Step 22



- Insert a plastic tool between the frame of the phone and the back cover at the top left corner.

Step 23



- Leave the plastic tool inside in order to access the power button connection.

Step 24



- Use the [tweezers](#) to pry up the power button ribbon cable until the only thing attached to the frame are the contacts.

⚠ Pulling too hard can rip off the ribbon cable. Make sure not to pull the entire body together.

Step 25



- Insert the tweezers under the contact points to undo the connection.

Step 26



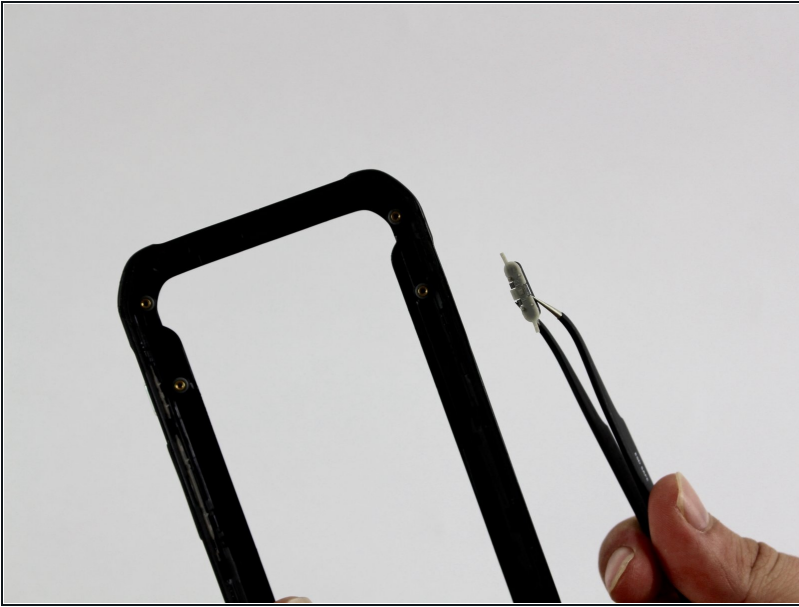
- Use the tweezers to remove the power button bracket.

Step 27



- The power button is located on the plastic cover.
- Use the tweezers to push the power button out of the frame.

Step 28



- Remove the power button from the frame.

To reassemble your device, follow these instructions in reverse order.