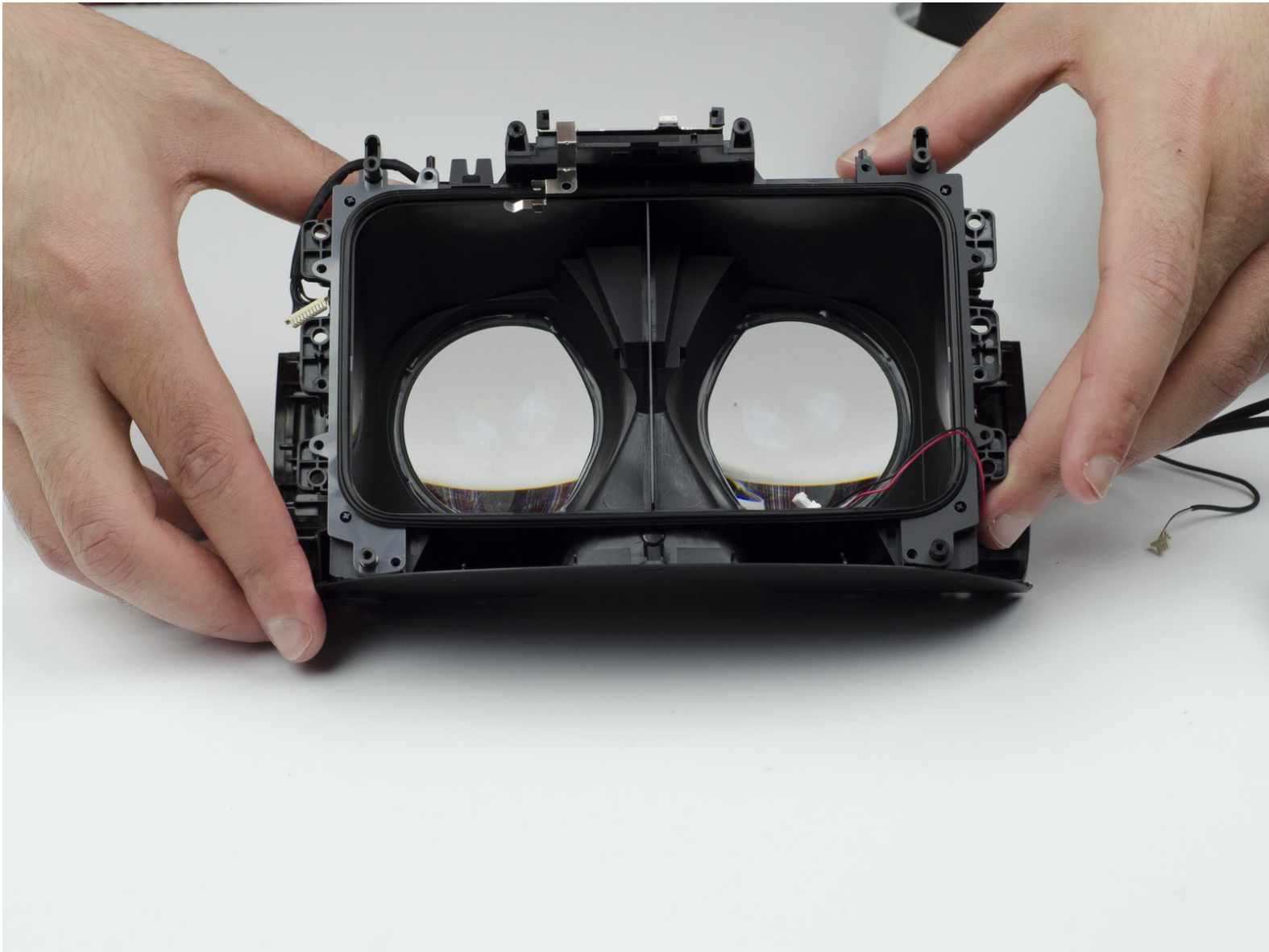




# PlayStation VR Headset Lenses Replacement

This guide will show you how to replace the lenses in the PlayStation VR headset.

Written By: Sarah Shand



# INTRODUCTION

This guide will show you how to remove and replace the lenses of the PlayStation VR Headset. This can be a challenging task, but with a little patience it can be done.

---

## TOOLS:

- [iFixit Opening Tool](#) (1)
  - [Phillips PH000 Screwdriver](#) (1)
  - [Hair Dryer](#) (1)
  - [Tweezers](#) (1)
-

## Step 1 — LED Light Tracker



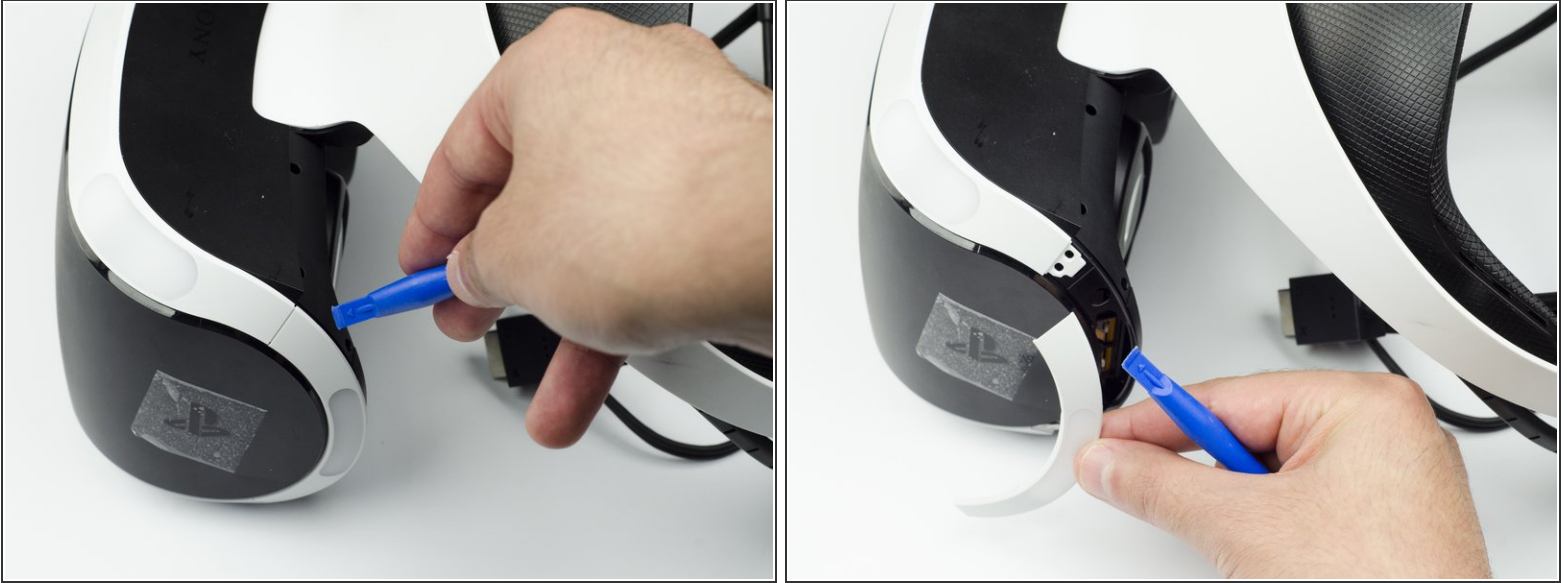
- Peel back the rubber covering around the lenses to remove the surrounding plastic eyepieces.

## Step 2



- Unscrew four 13 mm screws with a PH #000 screwdriver.

### Step 3



- Using the plastic opening tool, carefully pry the white plastic panel free from the side of the headset. Repeat this action for the opposite side.

### Step 4



- Use the plastic opening tool to pry the top white plastic panel free from the headset.
- ⓘ Do not try to remove the bottom plastic panel. There is a screw attaching it that must be removed first.
- ⓘ There may be a small amount of adhesive attaching the top panel to the headset, in which case you may need to use a bit more force to remove the panel.



## Step 5



- Flip the headset over.
- Using a PH #000, unscrew the 7 mm screw found on the bottom of the headset.

## Step 6



- Using the plastic opening tool, pry the bottom white plastic panel loose and remove it from the headset.
- i** There is adhesive attaching the panel to the headset, in which case it will take more force to remove the panel.

## Step 7



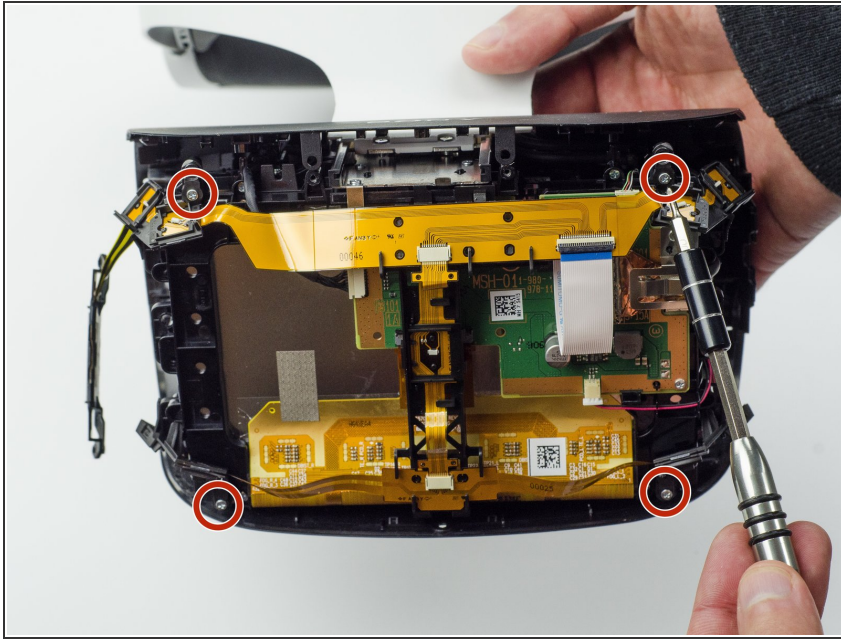
- Unscrew the two 7 mm screws from the top of the headset.

## Step 8



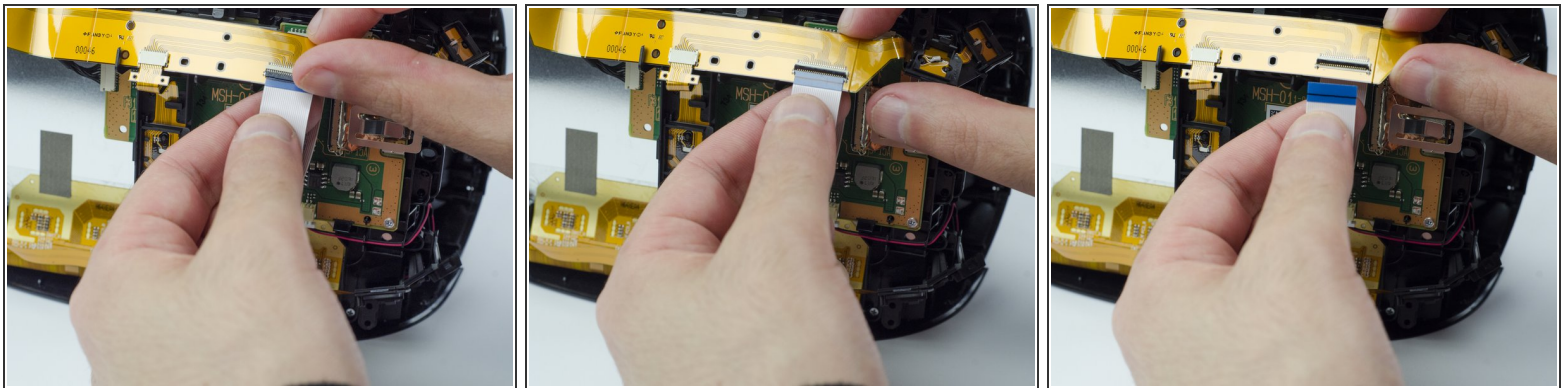
- Using your fingers, carefully pry the black front panel free from the headset.
- ⓘ We recommend that you start the removal from the sides by pulling them forward.
- ⓘ There is adhesive holding the front panel in place, which means you will need a bit of extra force to remove it.

## Step 9



- Unscrew the four silver 6 mm screws in each corner using a PH #000 screwdriver.

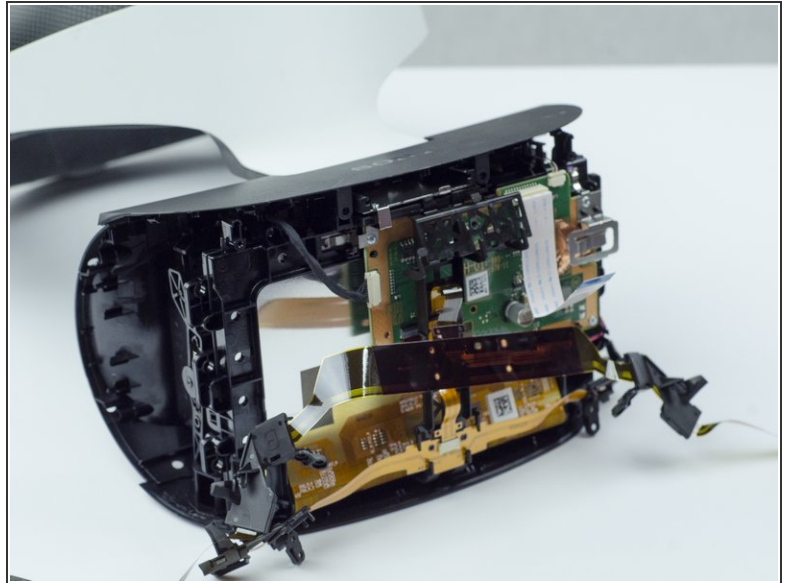
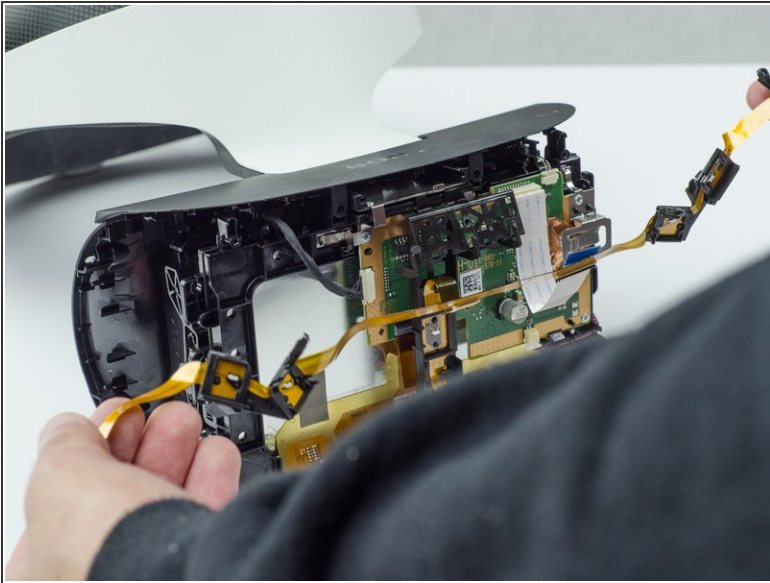
## Step 10



- Lift the small silver latch attaching the ZIF (zero insertion force) connector to the circuit board.
- Carefully pull the end of the white ribbon connector from its slot.
- ⓘ Be careful not to damage or dirty the ribbon connector.

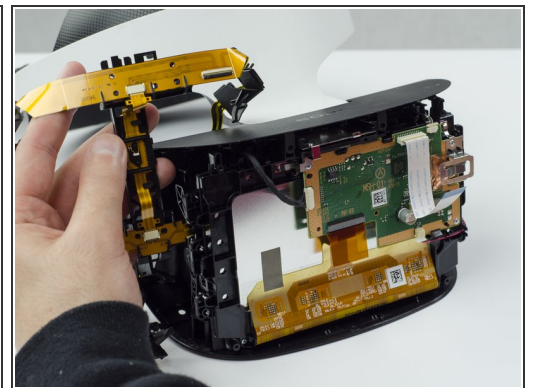
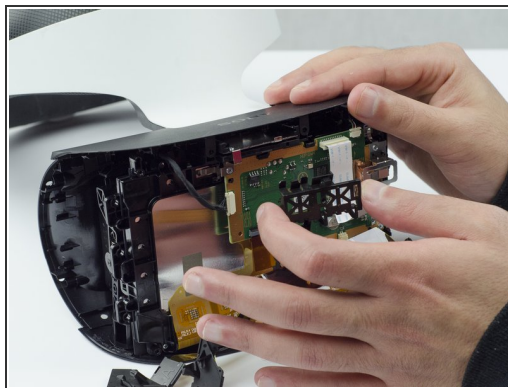
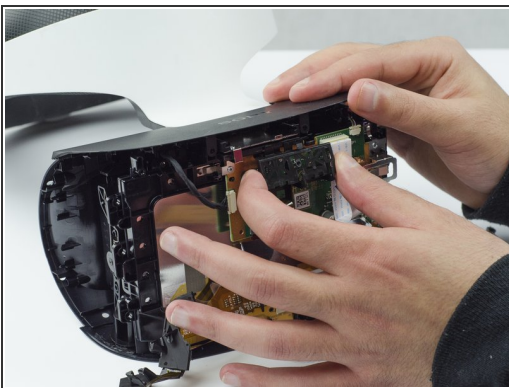


## Step 11



- Unhitch the yellow led connector ribbon and move it aside.
- ⓘ Be careful not to damage or dirty the ribbon connector.

## Step 12



- Carefully pry the black plastic piece attaching the yellow ribbon to the headset away from the green circuit board.
- Remove the yellow LED ribbons and black plastic connecting piece from the headset.



## Step 13 — Headset Lenses



- Using the tweezers, unplug the three (one black bundled, two multi colored bundled) connector cables from their ports along the circuit board.

## Step 14



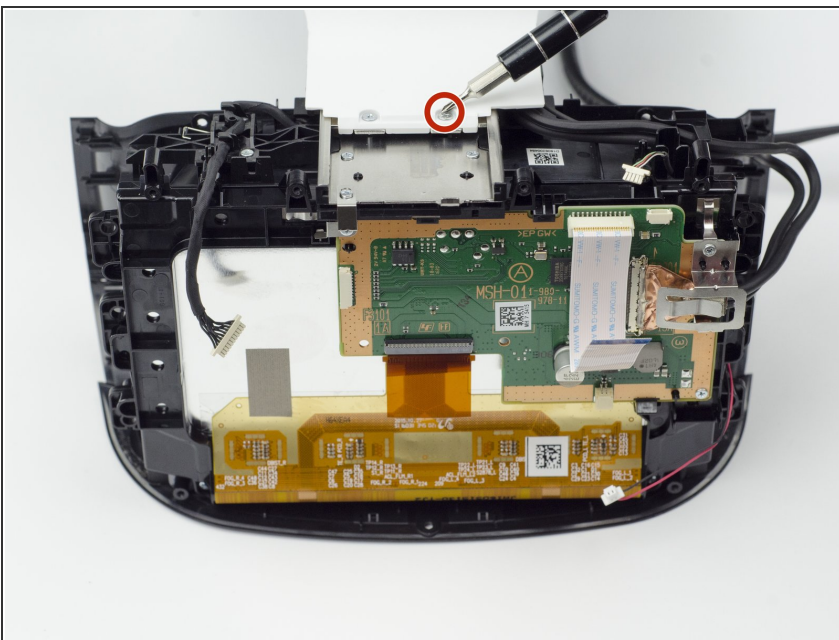
- Flip the headset over.
- Unscrew the two 7 mm screws near the lenses with a PH #000 screwdriver.

## Step 15



- Flip the headset back over.
- With your fingers, carefully pry the top black plastic panel free.

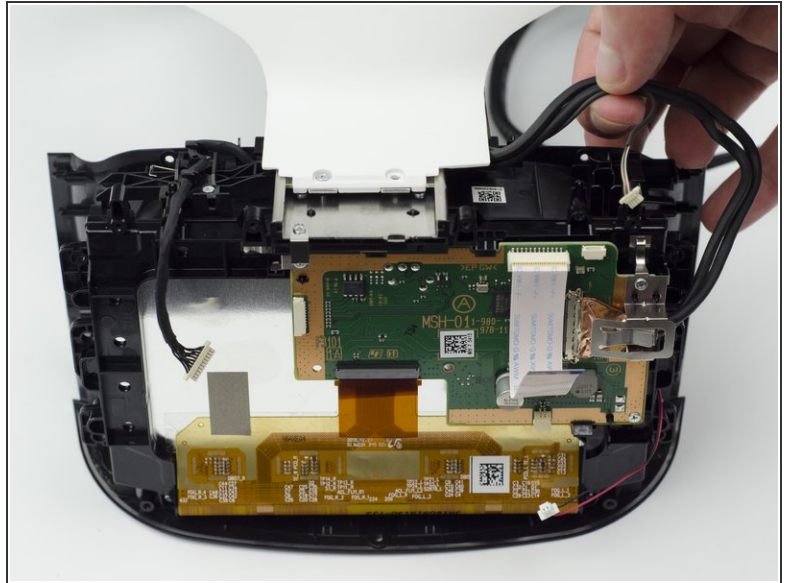
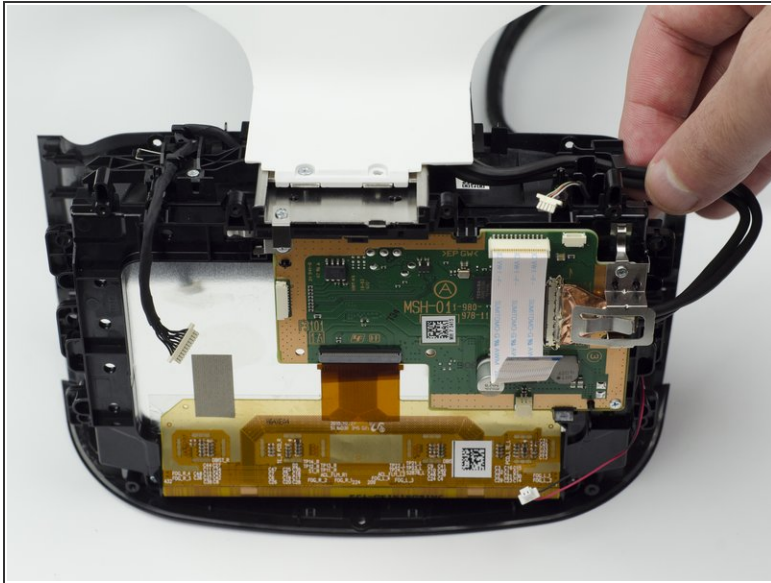
## Step 16



- Unscrew one silver 4 mm screw from the white plastic band connecting the rest of the headset.
  - One 4 mm screw with a PH #000 screwdriver.
- ⓘ Even though there are two, only one of the silver screws needs to be unscrewed.

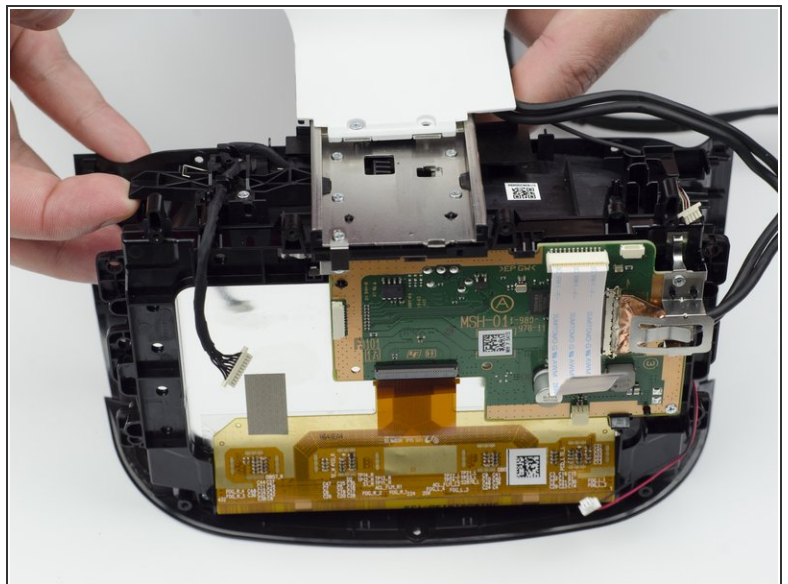
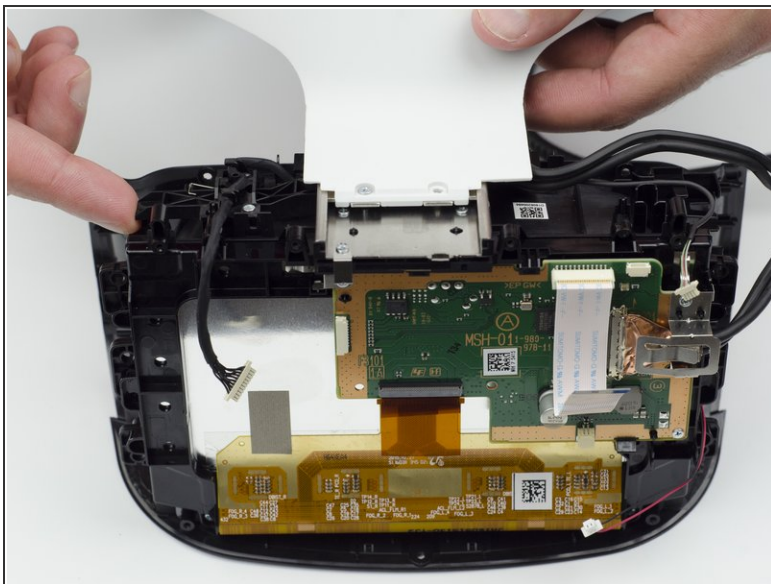


## Step 17



- Move the top black wires aside.

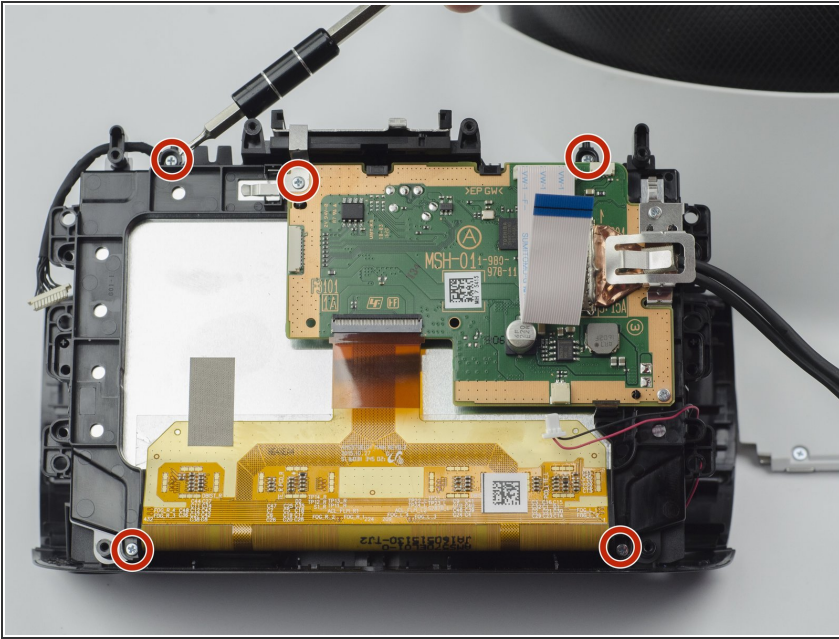
## Step 18



- Using a finger, press the black plastic tab up to loosen the white connector piece.
- Slide the white plastic connector piece back and lift up to remove it.

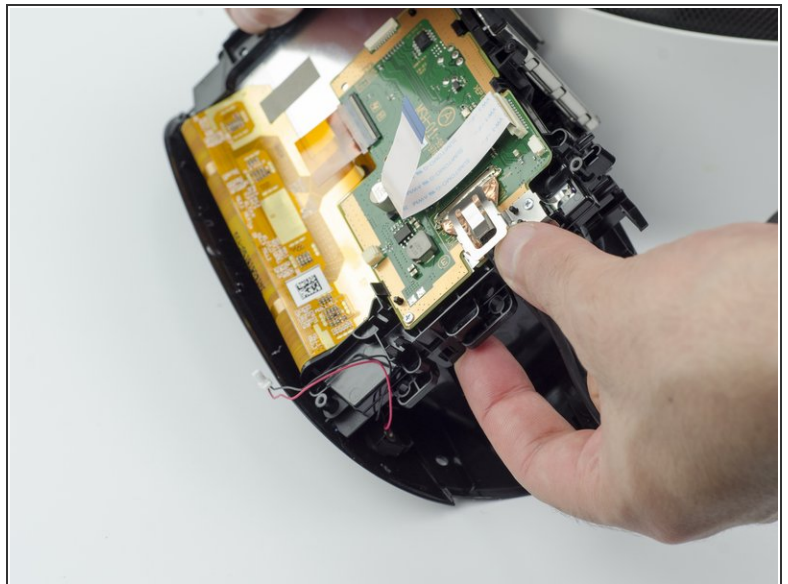
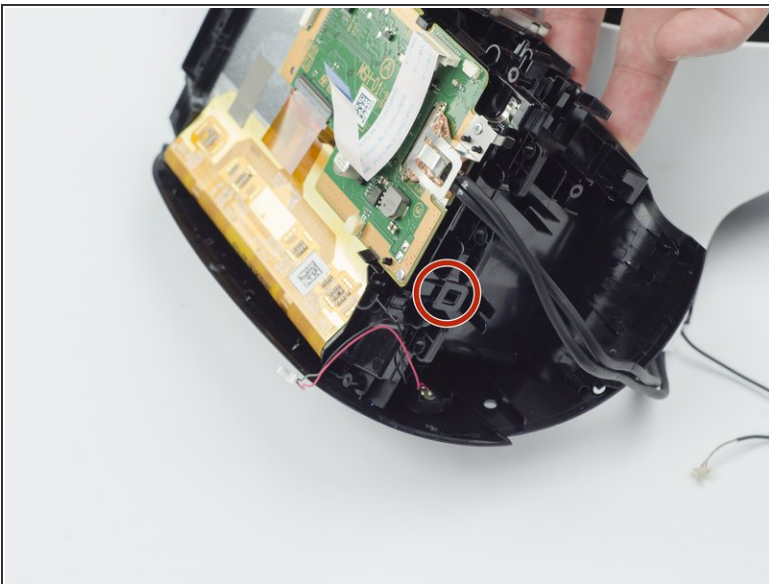


## Step 19



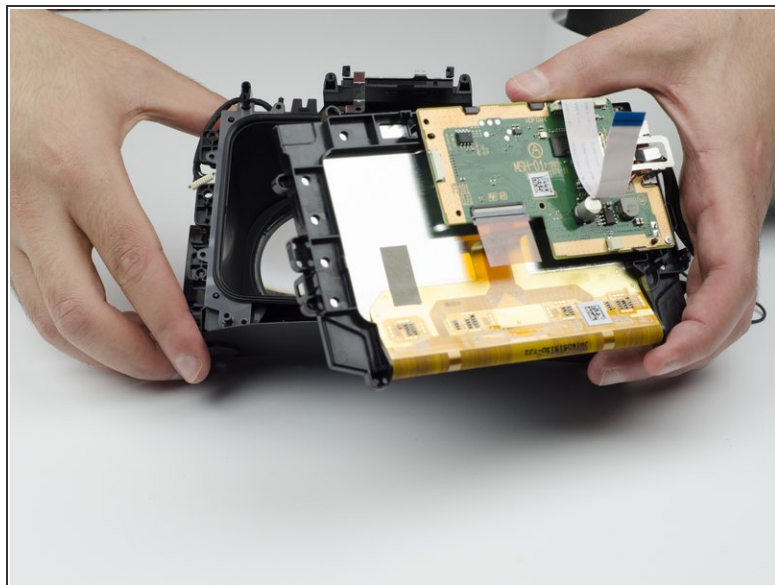
- Unscrew the five silver 6 mm screws from the circuit board.
- Five 6 mm screws with a PH #000 screwdriver.

## Step 20



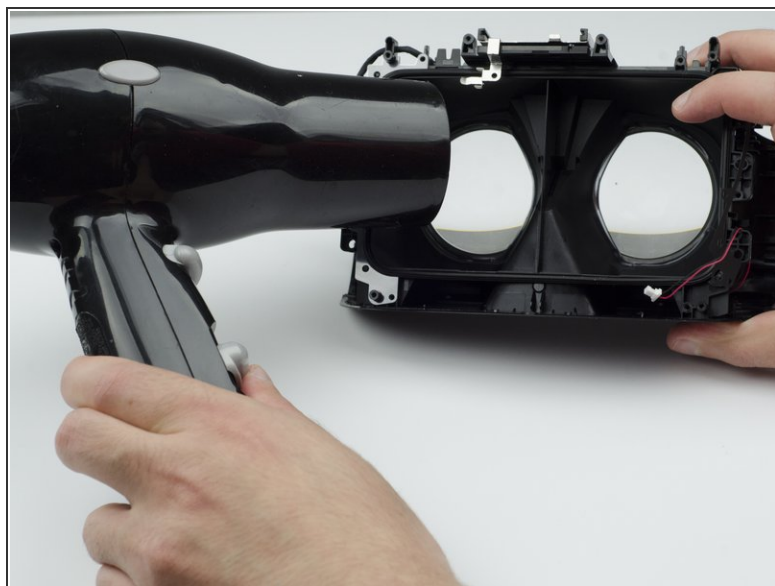
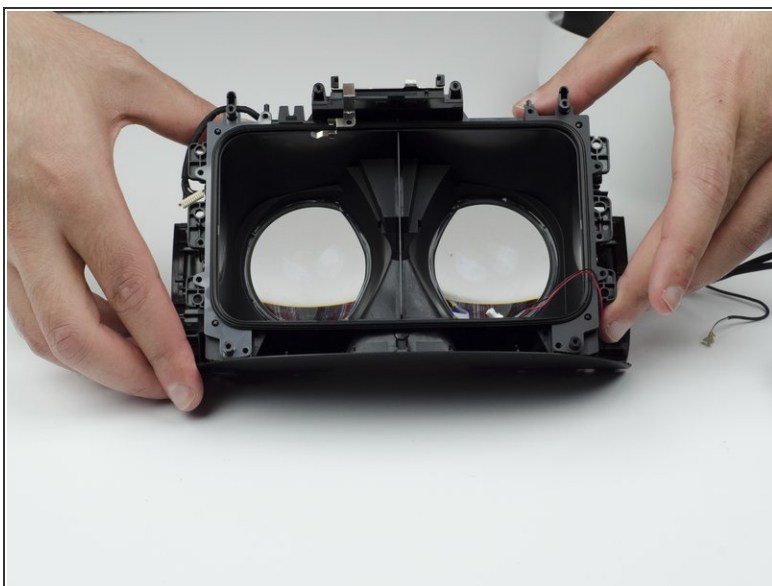
- Using your fingers, lift up on the sides of the black plastic piece holding the circuit board in place.
- There are small plastic tabs on the side that latch the piece in place that need to be lifted in order to remove it.

## Step 21



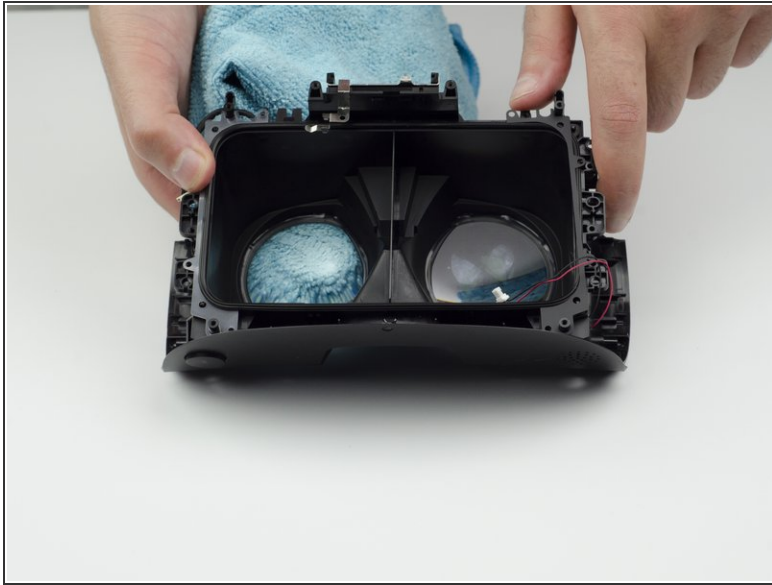
- Carefully lift the circuit board out of the headset and set aside.
- ⓘ Take care not to touch the screen.

## Step 22



- Using a hairdryer (or heatlamp), warm the area around the lenses. This will help loosen them for removal.

## Step 23



- Using a glass cloth (or any cloth with soft fibers), carefully press on the lenses until they pop out of place.

To reassemble your device, follow these instructions in reverse order.