



iHome iW1 Speaker Wi-Fi Antennae Replacement

This guide will demonstrate how to replace the Wi-Fi Antennae on the iHome iW1 speaker.

Written By: Victor Germino



INTRODUCTION

If you are having poor Wi-Fi connection, or the Wi-Fi is not connecting at all, then replace the the Wi-Fi antennae. This guide will show the procedure to replace this component.

TOOLS:

- [iFixit Opening Tools](#) (1)
 - [Phillips #00 Screwdriver](#) (1)
 - [Phillips #1 Screwdriver](#) (1)
-

Step 1 — Battery



- Remove the rubber from the bottom of the speaker, use a medium blue plastic spudger to gently work its way under the rubber and slowly peel off for each of the three feet. The order does not matter.

Step 2



- Remove the six 11 mm Philips #1 screws found underneath the foam to remove the steel outer metal frame.
- Once the screws come off, keep them safely off to the side.

Step 3



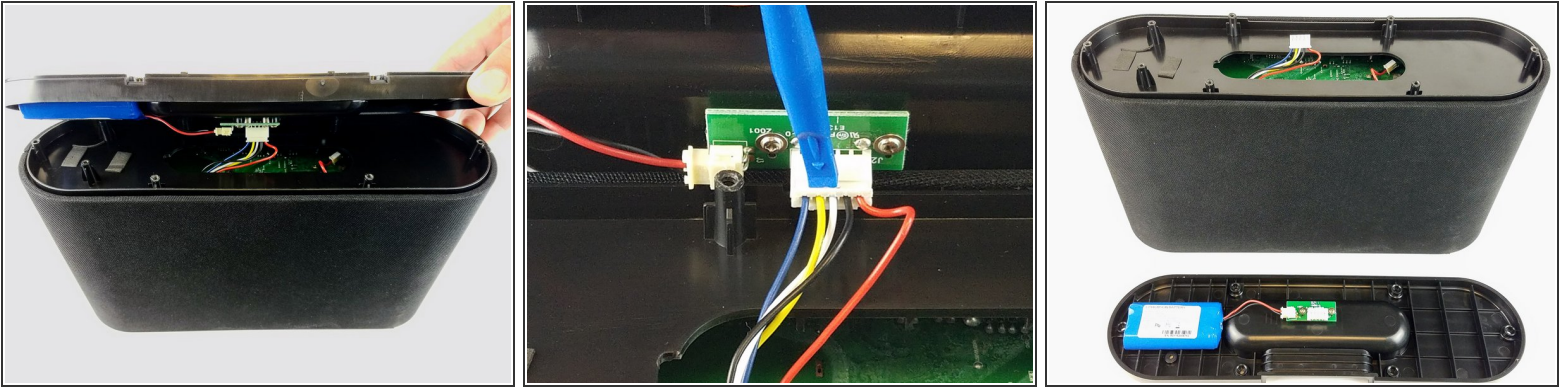
- Remove the metal frame gently and set aside.

Step 4



- Remove the two remaining 11 mm Philips #1 screws holding the base and set them aside.

Step 5



- Lift the base up gently keeping in mind that the base is connected with wires to internal parts of the speaker.
- Disconnect the white bundled cable connector attached to the charging node using a spudger. The base of the speaker is now free to be removed.

Step 6



- Remove the white power cable connector that connects the charging node to the battery, using the plastic spudger.
- Pry the battery off using the plastic spudger.

Step 7 — Wi-Fi Adapter



- Pry off the mesh frame from the back side of the speaker with a plastic spudger until you hear a click noise when the clip is removed.

Step 8



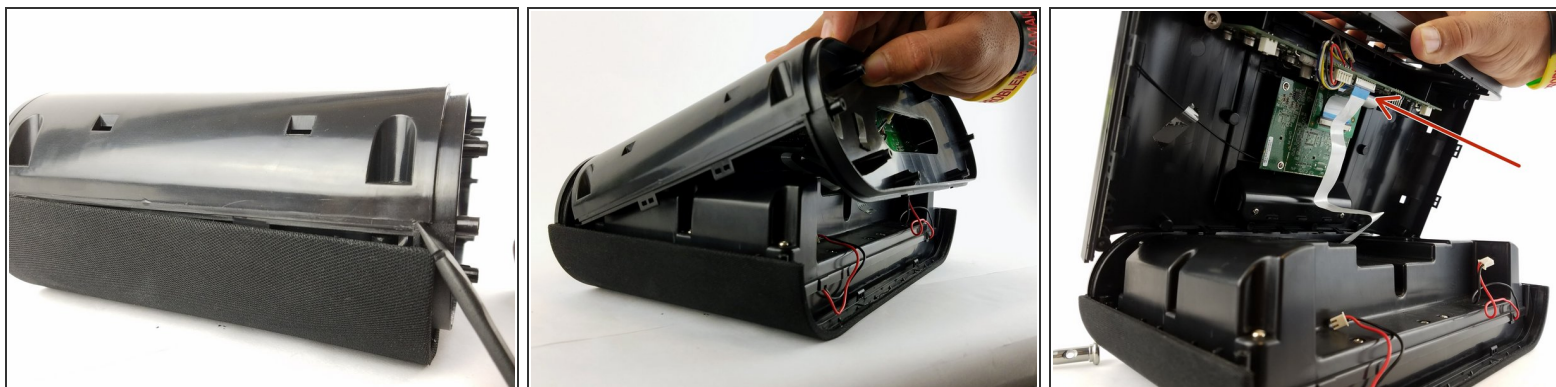
- Use a plastic spudger to remove the rubber grommets from the four corners of the speaker underneath the mesh frame.

Step 9



- Remove the four 11 mm Philips #1 screws from beneath the rubber grommet that was removed from the previous step in all four corners.

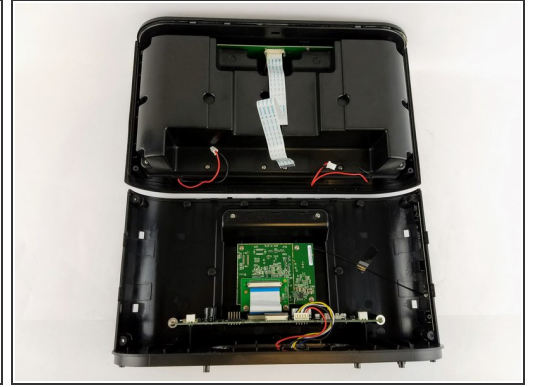
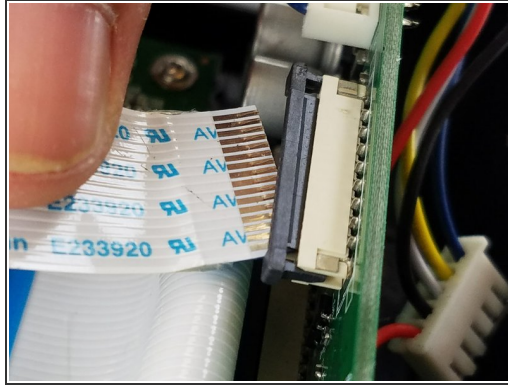
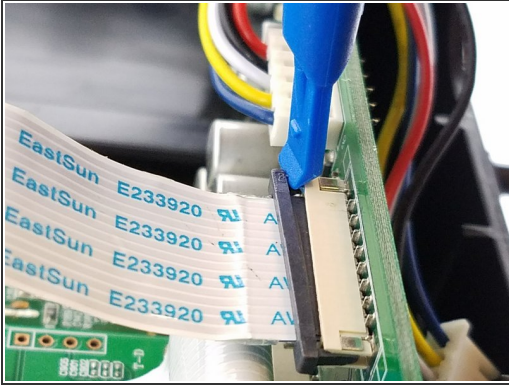
Step 10



- Separate the mesh frame and plastic frame by placing the spudger in between them.

⚠ Do not pull the two pieces since the two pieces are held together with the ribbon cable.

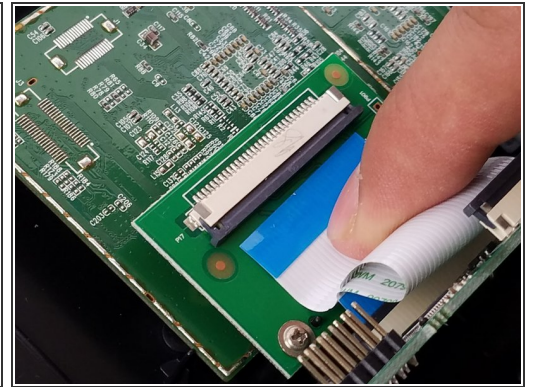
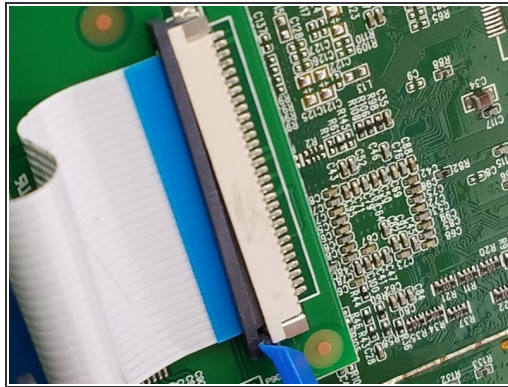
Step 11



- Remove the ribbon cable by pulling the black clip towards the cable, then gently pull the ribbon cable to fully separate the mesh frame and plastic frame.

i The black locking clip will only move about 2mm out.

Step 12



- Remove the second ribbon cable that is connected to the main circuit board and the WiFi adapter.

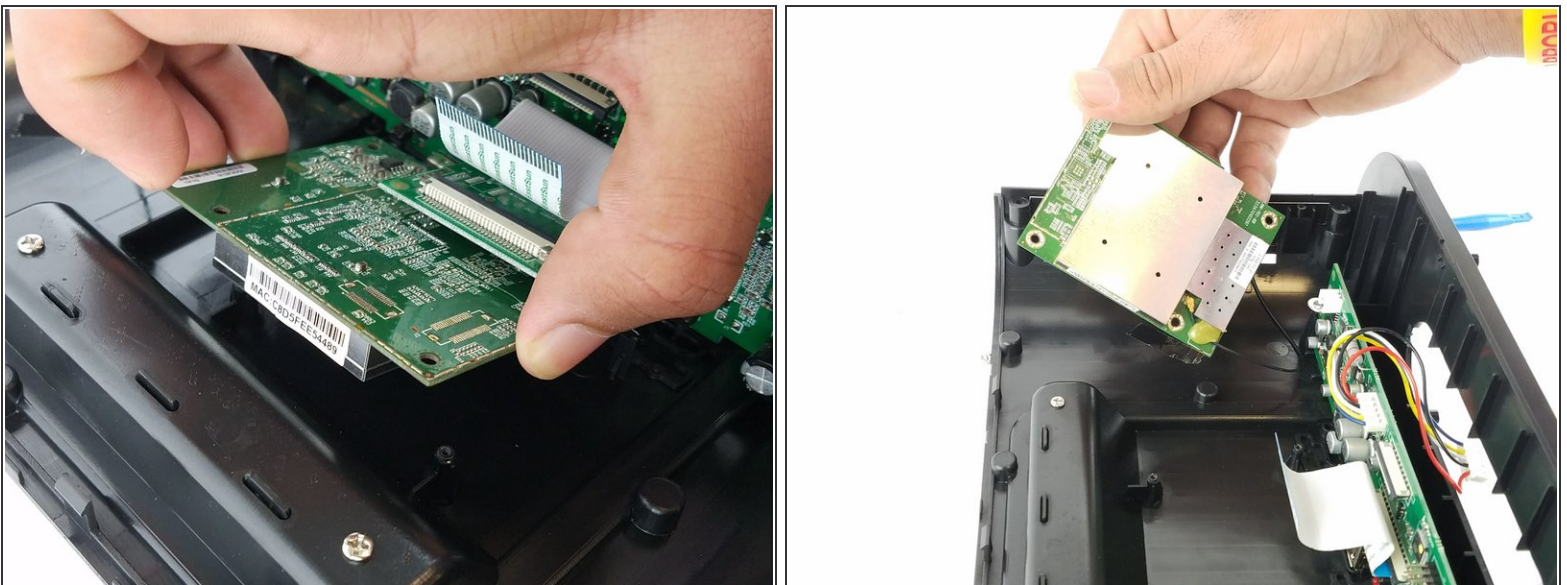
i The black locking clip will only move about 2mm out.

Step 13



- Unscrew the five 11 mm Philips #1 screws found on the outside of the circuit board.

Step 14



- Lift the circuit board to expose the wifi antenna wire.

Step 15



- Pry the glue and unclip the wifi antenna plug from the circuit board.

Step 16 — Wi-Fi Antennae



- Remove the wifi antenna from the side of the speaker by sliding it upward with a plastic spudger.

To reassemble your device, follow these instructions in reverse order.