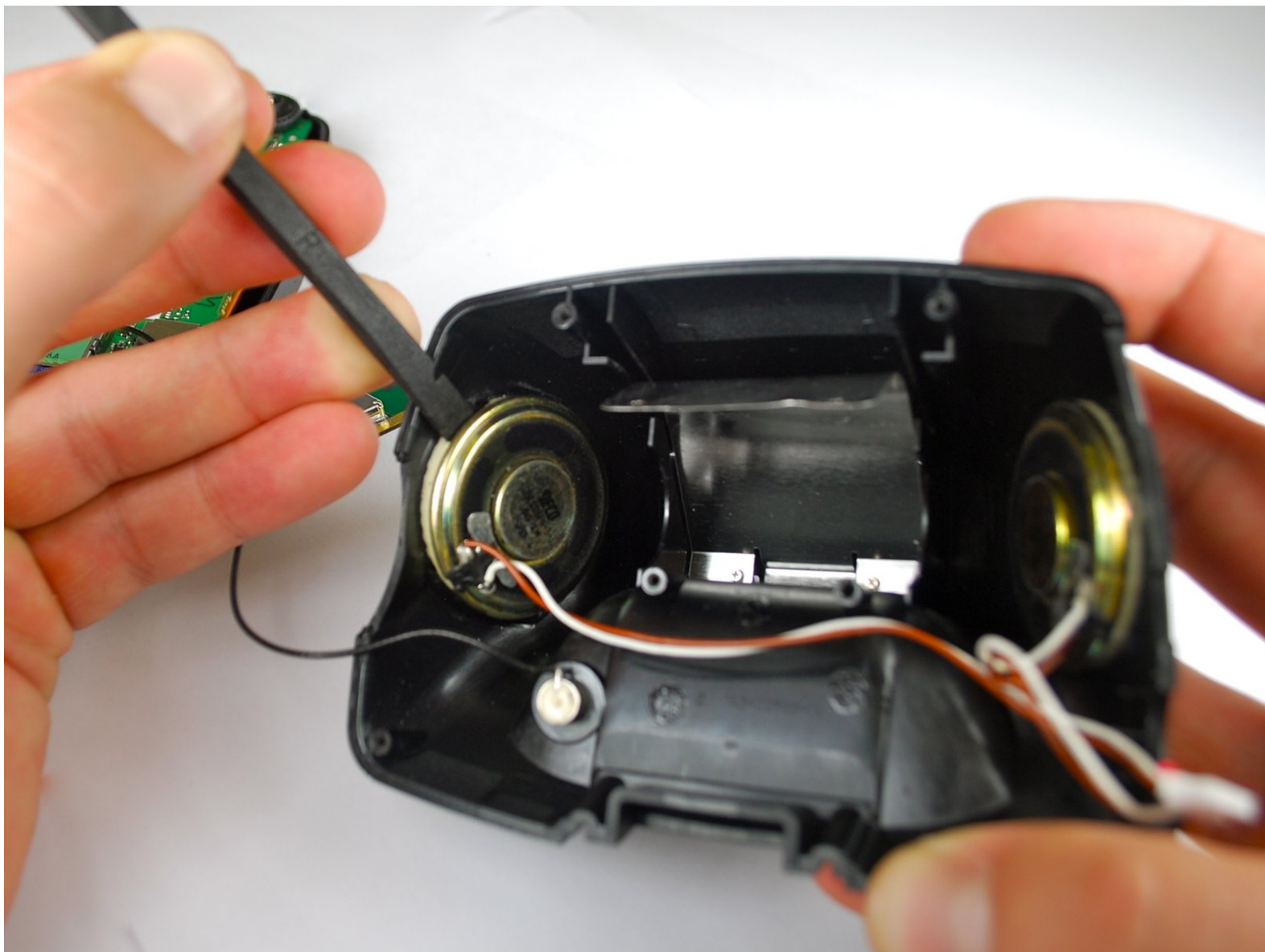




# Garmin StreetPilot c320 Speakers Replacement

Replace the Speakers in your Garmin StreetPilot c320.

Written By: Arturo Barajas



---

## INTRODUCTION

Before you begin disassembling the device, be sure the power is off. For this guide you will need to know how to use a soldering iron. For help with soldering look at this [guide](#).

---

### TOOLS:

- [Phillips #00 Screwdriver](#) (1)
  - [iFixit Opening Tools](#) (1)
  - [Soldering Iron](#) (1)
-

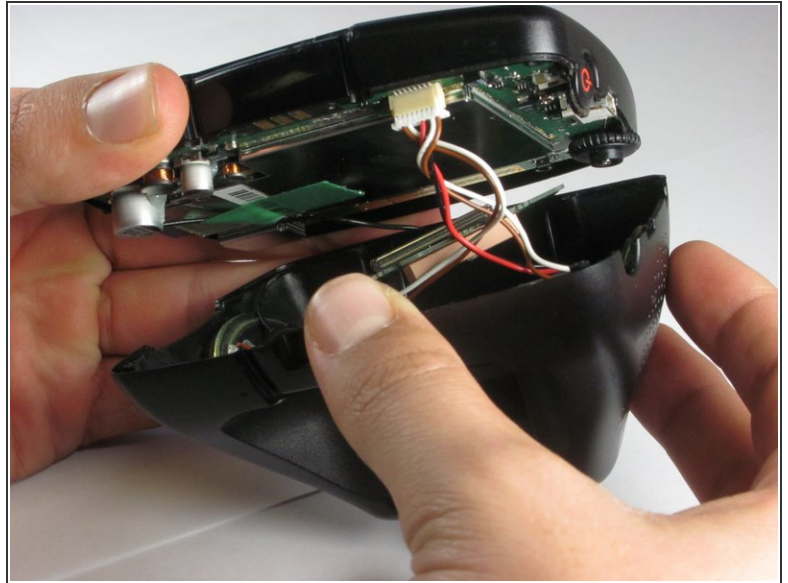
## Step 1 — Rear Case Assembly



- Wedge a plastic opening tool in between the outer frame and the rear panel assembly.
- Pry the outer frame off the perimeter of the rear panel assembly.

 The cover will easily pop off.

## Step 2



- Remove the four #00 Phillips screws securing the front case assembly to the rear case assembly.
  - Carefully lift, but do not completely separate, the front case assembly from the rear case assembly.
- ⚠ Be extremely cautious when separating both halves, as the rear case assembly is still attached to the front case assembly via a few connectors.

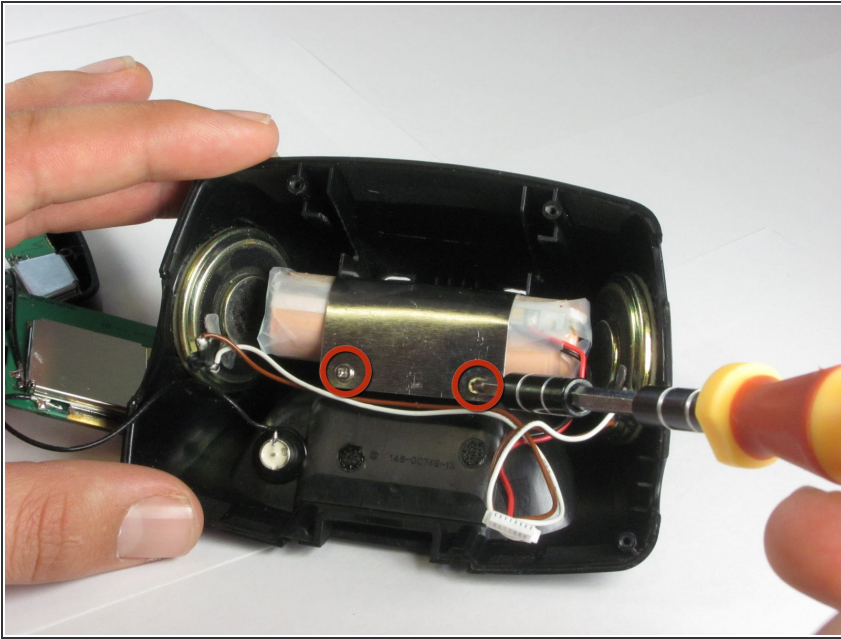
## Step 3



- Gently pull the battery cable connector from its socket on the motherboard.
- The second connector can remain attached to the motherboard, but be careful not to break the connector while handling both halves of the device.

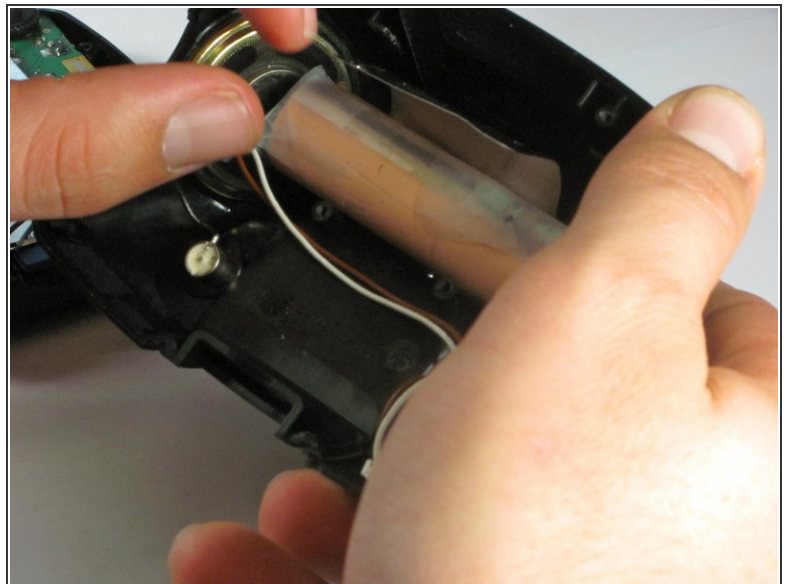
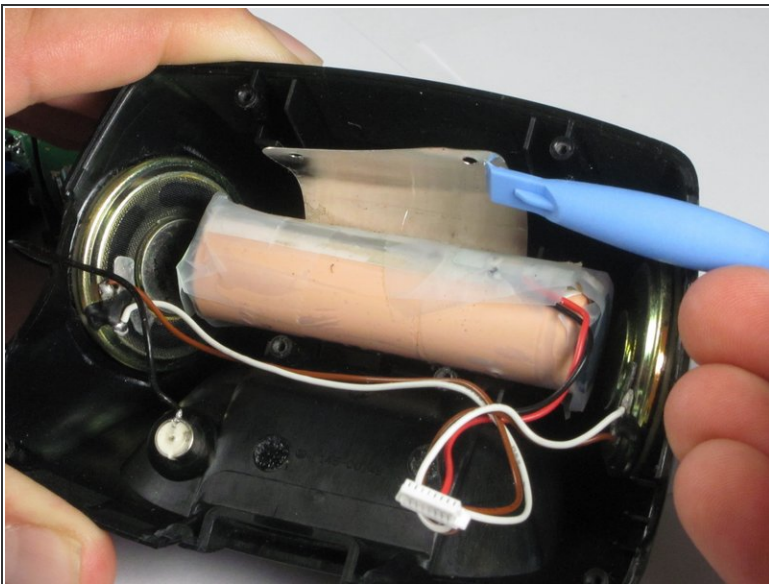


## Step 4 — Battery



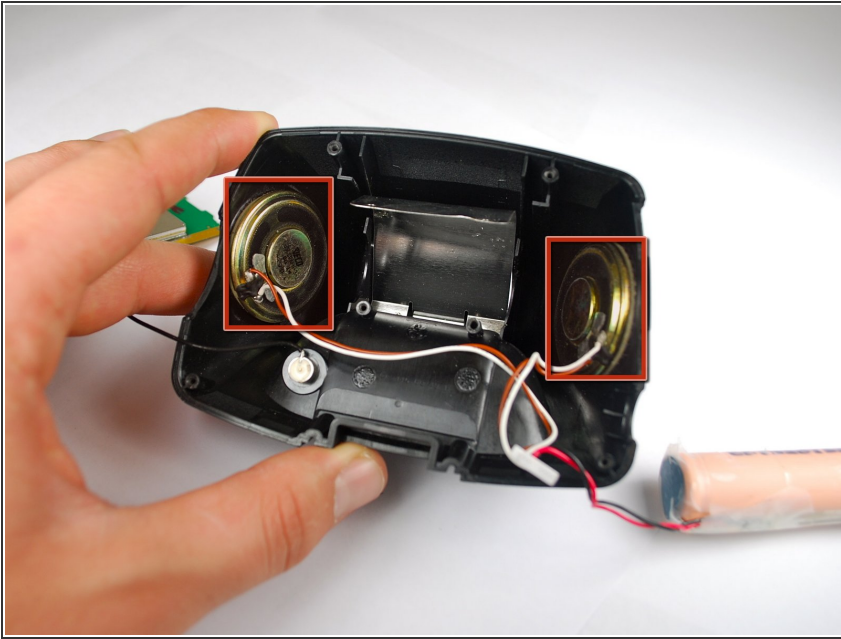
- ⚠ Do not disconnect the black wire. Doing so may cause severe damage to your device.
- Remove the two #00 Phillips screws securing the battery to the rear case assembly.

## Step 5



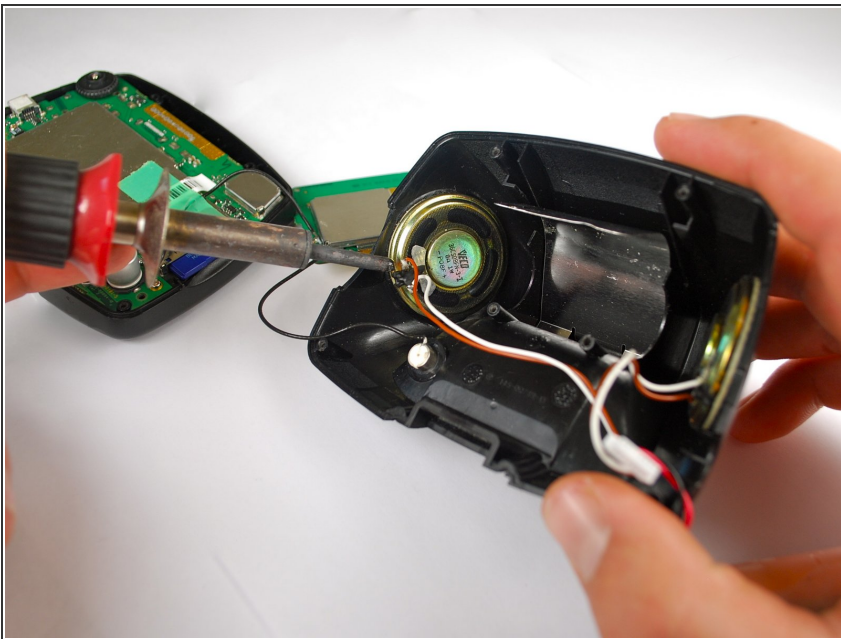
- Use a plastic opening tool to peel back the battery bracket.
- Cautiously grasp the battery and lift it out of the device.

## Step 6 — Speakers



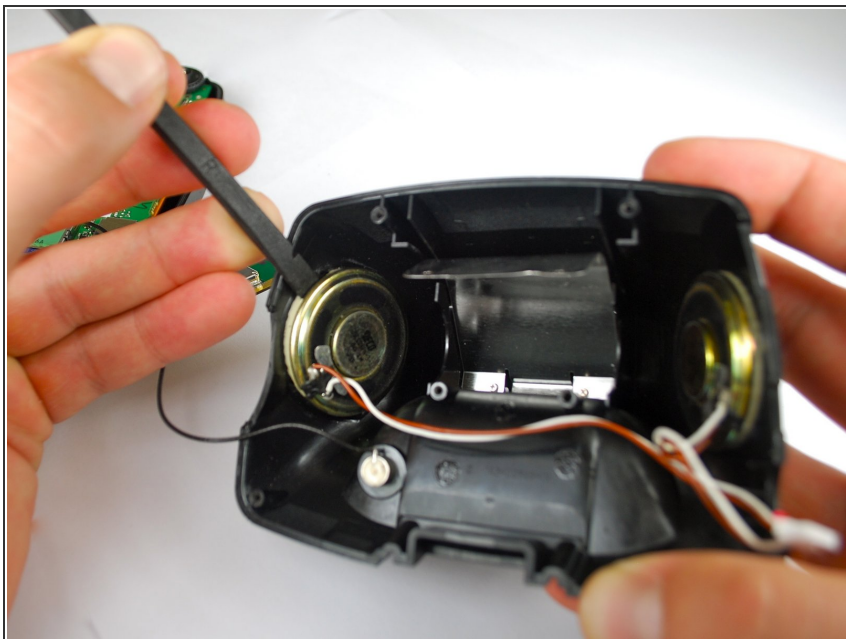
- i The speakers are nestled along the sides of the rear case assembly.

## Step 7



- Carefully heat and desolder the speaker lead wires from the back of each individual speaker.
- i The speaker lead wires are the white and brown wires.
- ★ For help with soldering check out this [guide](#).

## Step 8



- Use the flat edge of a spudger to pry each speaker from its housing in the rear case assembly.
- ⓘ The speaker lead wires are still attached to the speaker, however they should have been desoldered in the previous step.

To reassemble your device, follow these instructions in reverse order.