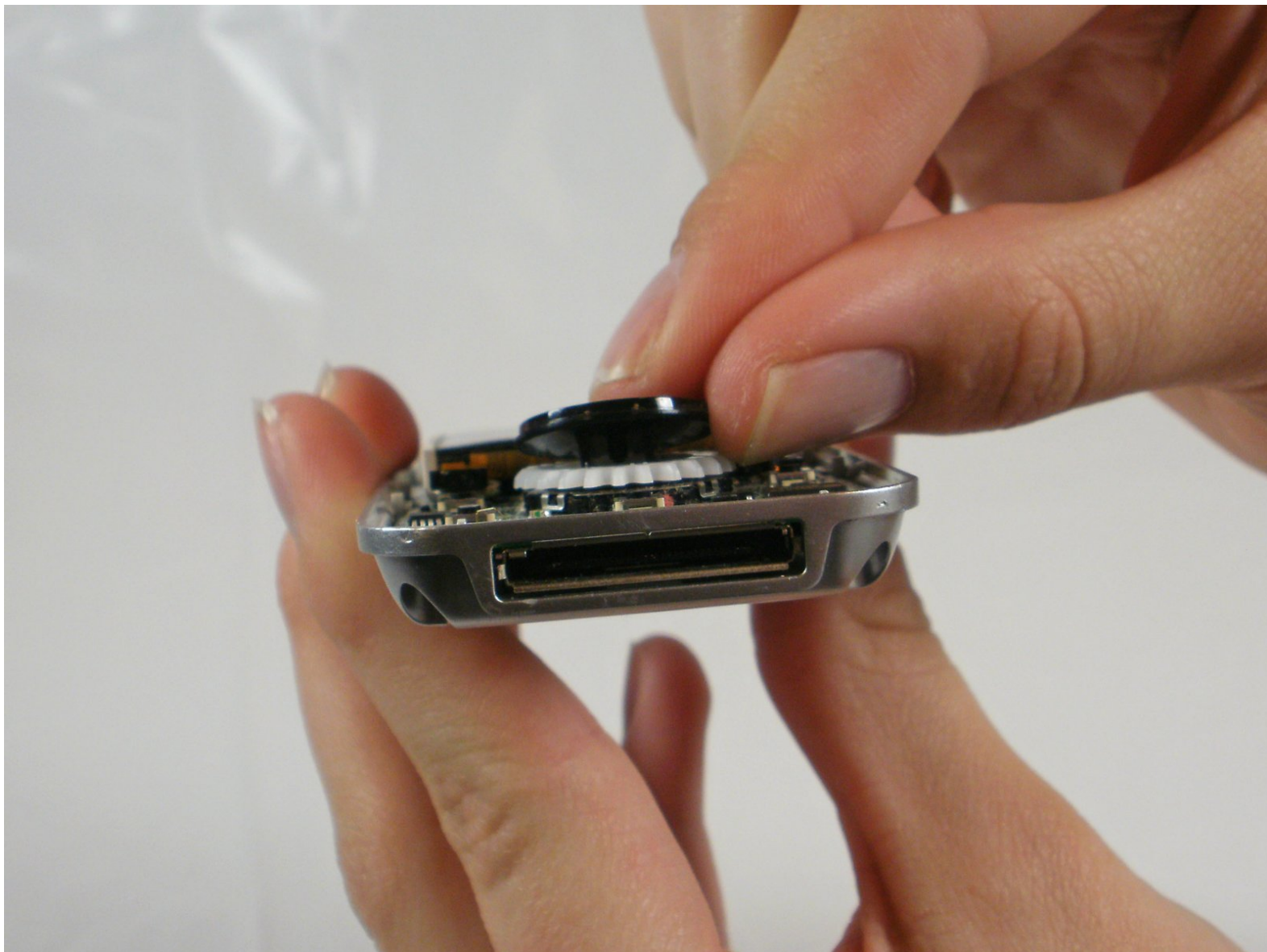




# Sansa e260R Scroll Wheel Replacement

Written By: JenniferW





## TOOLS:

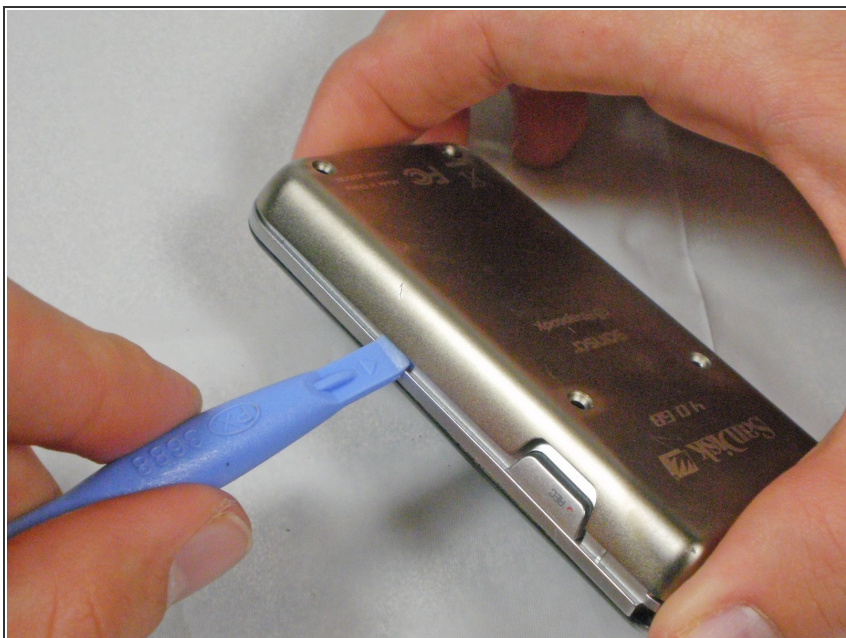
- [Phillips #00 Screwdriver](#) (1)
- [iFixit Opening Tools](#) (1)
- [Spudger](#) (1)

## Step 1 — Rear Case



- ❗ Before disassembling the device, make sure it is powered off.
- Remove the four 1.5mm screws on the back of the device.

## Step 2



- Using a plastic opening tool, lift the metal backing from the front of the device.



### Step 3



- Pull the rear panel off of the Sansa e260R.

### Step 4 — Battery



- Grip the bottom of the battery with your thumb and forefinger and pull it away from the device.

## Step 5 — Front Panel



- Remove the four 1.5mm screws on the inner casing of the device.
- ⓘ These screws are very small and hard to extract from the casing. It may be helpful to use a magnetic screwdriver.

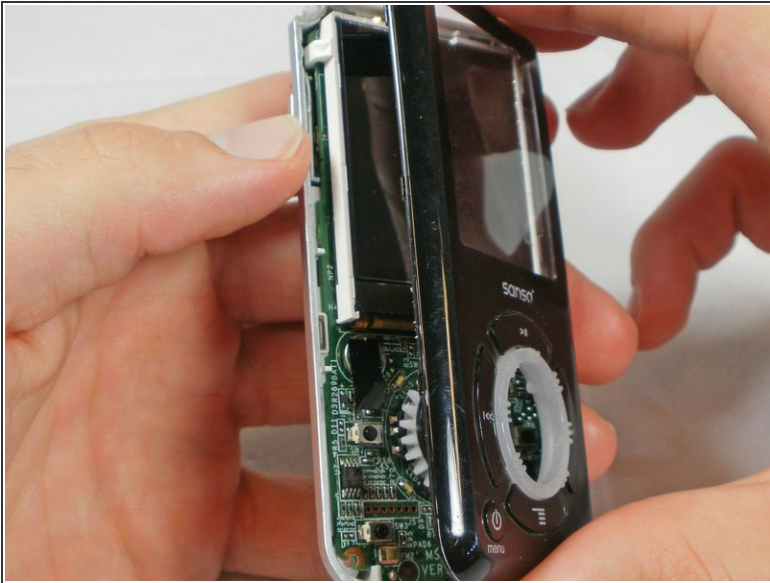
## Step 6



- Flip the device so that the front is facing you.
- Slide a plastic opening tool between the plastic front cover and the metal back cover of the device.

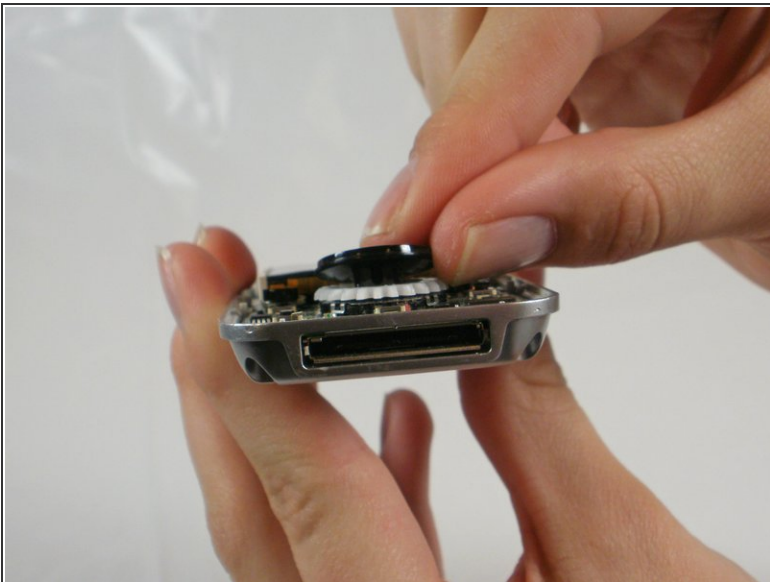


## Step 7



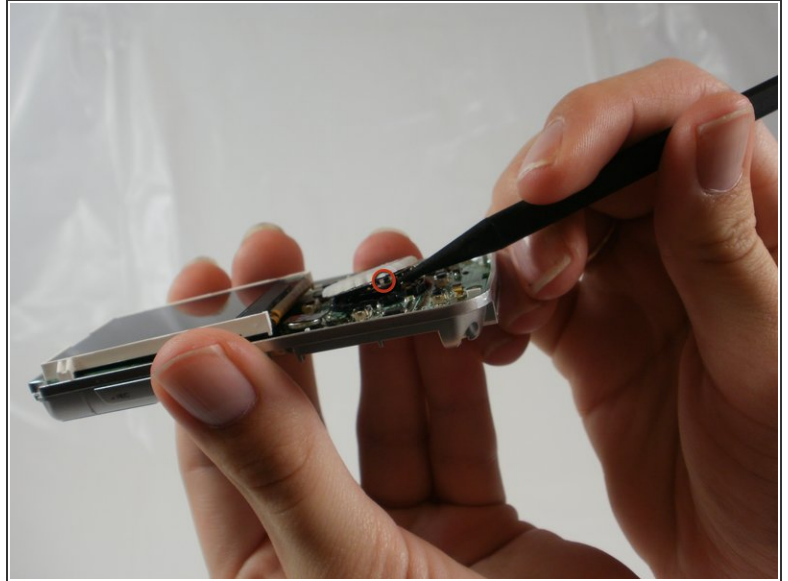
- Pull the front cover away from the rest of the device.

## Step 8 — Scroll Wheel



- Gently pry the bottom of the black button to remove it from the device.

## Step 9



- ❗ There are 4 small metal hooks under the white scrolling mechanism.
- To remove the white scrolling mechanism, remove two of the bottom hooks using a spudger.

## Step 10



- Clean the area around the button to remove any dirt or other outside material that would prevent the scroll wheel from moving freely.

To reassemble your device, follow these instructions in reverse order.