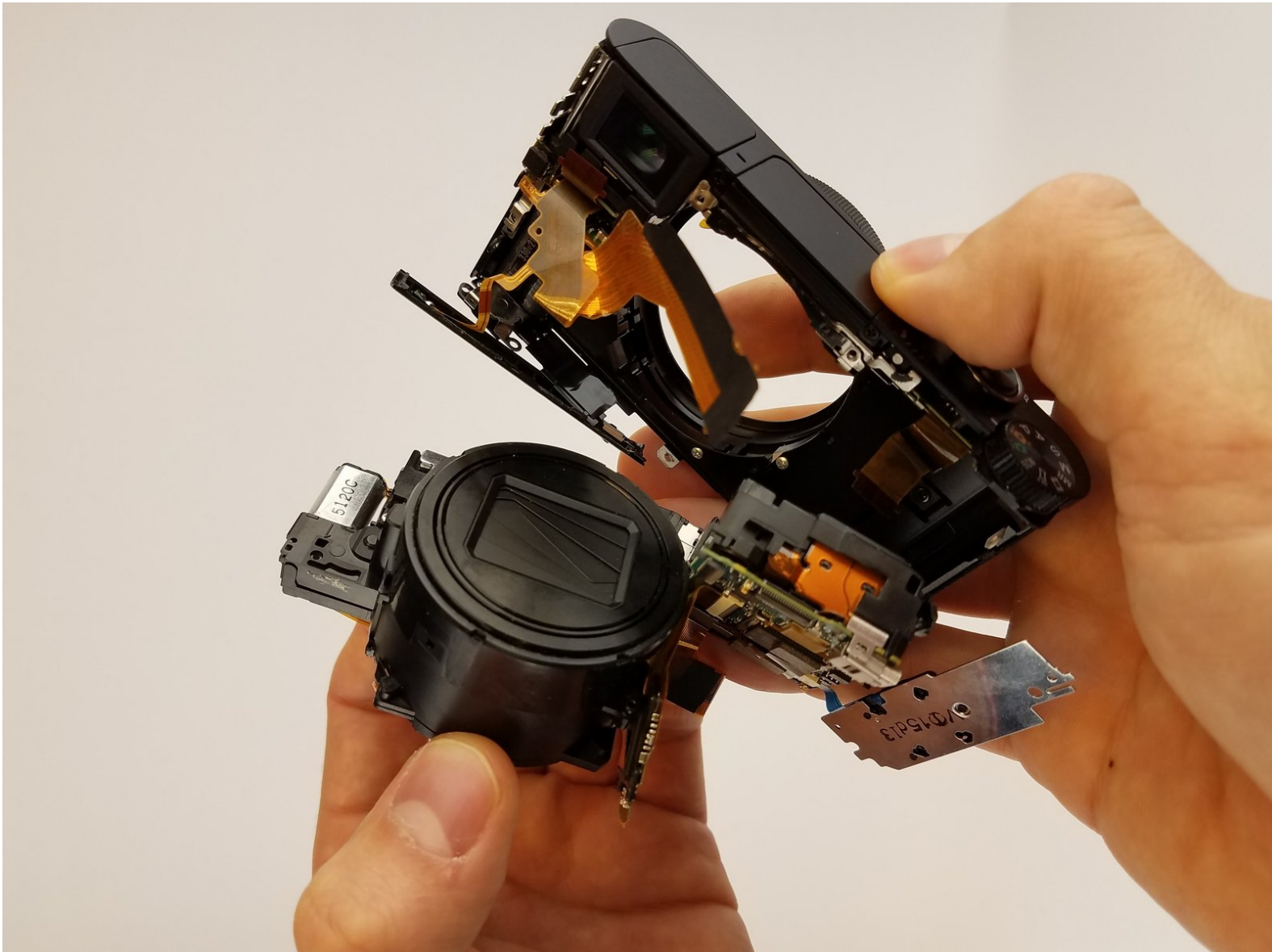




# Sony Cyber-shot DSC-HX90V Lens Replacement

This guide will show you the steps to remove and replace the lens of the camera

Written By: Marin Rusinov



---

# INTRODUCTION

This guide will show you the steps to remove and replace the lens of the camera

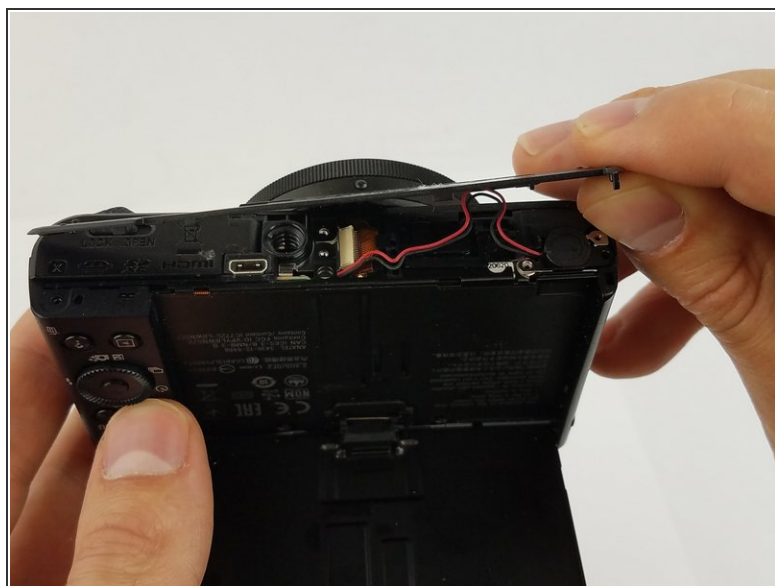
---



## TOOLS:

- [Heavy-Duty Spudger](#) (1)
  - [Phillips #000 Screwdriver](#) (1)
-

## Step 1 — Button board



- Place the device so bottom of the camera is facing up .
- Remove the five marked screws with a Phillips #000 screwdriver.
- Insert the spudger where arrow marks to gently remove the lower panel.

## Step 2



- Remove the marked screw on the side of the camera with a Phillips #000 screwdriver.

## Step 3



- Remove the marked screw with a Phillips #000 screwdriver.

## Step 4



- Orient the device so the lens is facing down.
- Remove the two black M1.4 X 3.5 Phillips head screws using Phillips #000 screwdriver.



## Step 5



- Orient the device so the lens is facing down.
- Remove the black M1.4 X 3.5 Phillips head screw.

## Step 6 — Side cover



- Use the plastic opening tool with a prying motion to remove the side cover of the camera.
- ⓘ The cover should come off easily but you might hear light snapping or popping.


## Step 7 — LCD



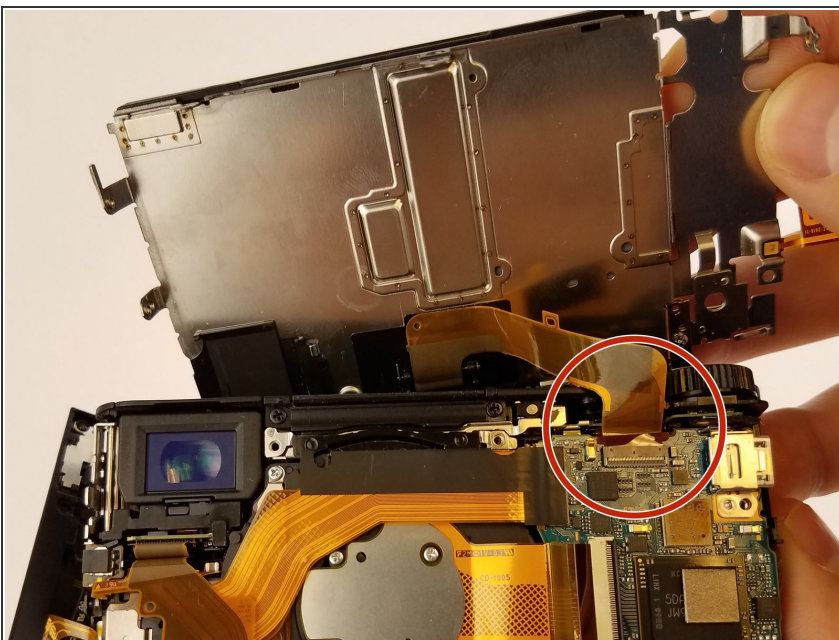
- Remove the small screw under the multi/USB cover.
- Use the plastic opening tool to remove the button board.


## Step 8



-  Disconnect the control board data cable with care. Permanent damage may occur to the control board if tools are used to disconnect the data cable. Use your fingers only.
- Disconnect the control board data cable by wiggling carefully with your fingertips. Set the control board to the side once it is disconnected.

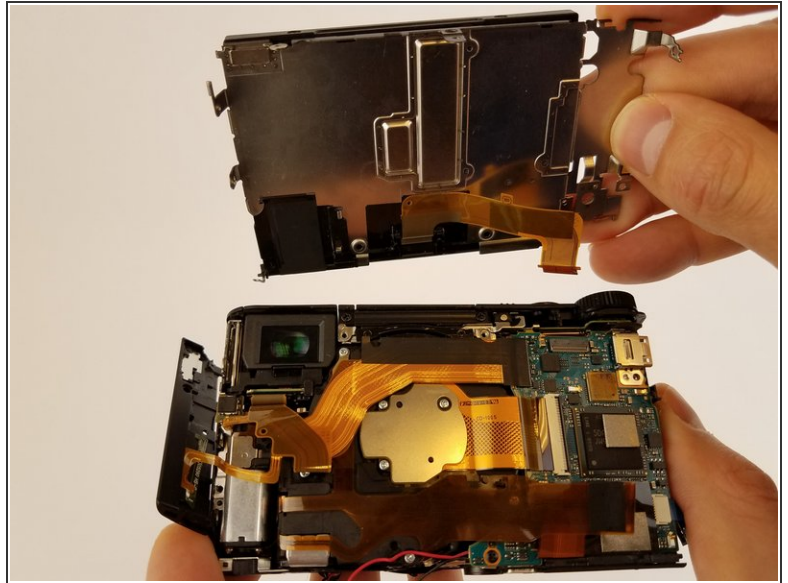
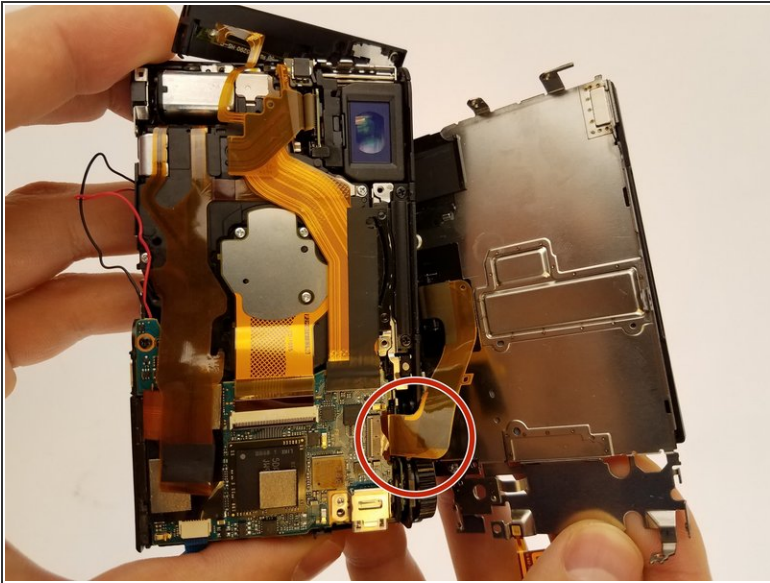
## Step 9



-  LCD screen is very fragile. Handle with care. Do not use tools to remove the screen.
- Lift the metal plate and LCD screen simultaneously until it is perpendicular to the camera.



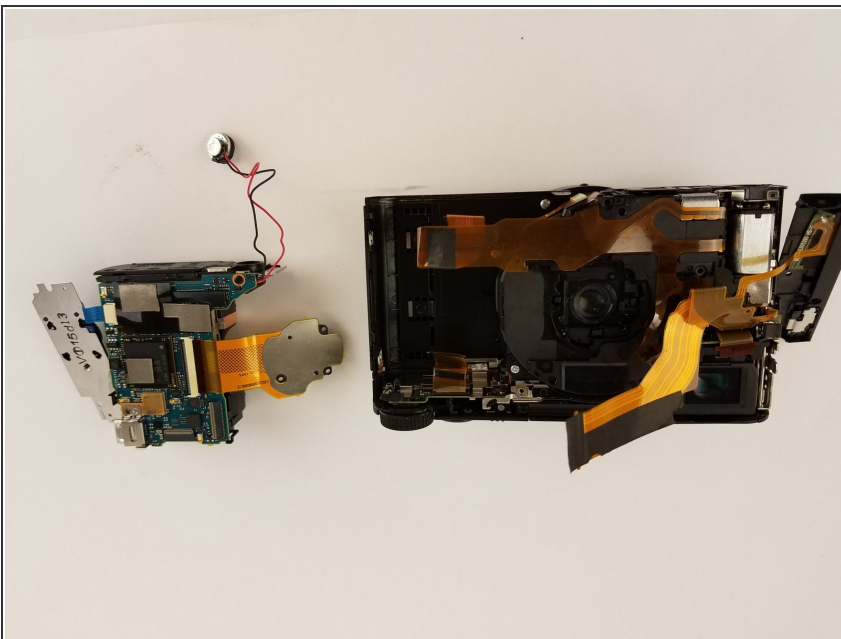
## Step 10 — Motherboard



⚠ LCD screen is very fragile. Handle with care. Do not use tools to remove the screen.

- Remove the ribbon cable connecting LCD display to camera sensor and battery housing.

## Step 11

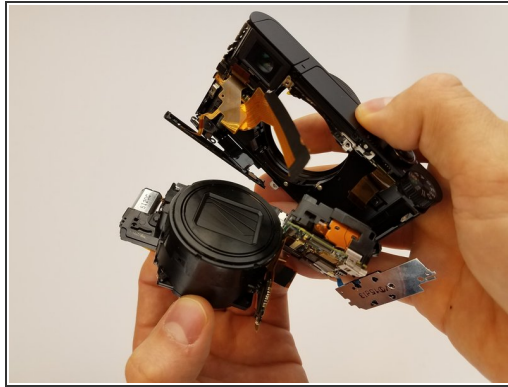


- Make sure all ribbon cables are unplugged and remove the motherboard.

⚠ Ribbon wires can be easily damaged.



## Step 12 — Lens



- Press on the lens with your finger.
- Gently pull the lens container out of the camera.

⚠ Make sure all ribbon wires are unplugged.

To reassemble your device, follow these instructions in reverse order.