



How to remove malware from an infected windows PC

This is a guide to demonstrate how to detect and remove malware viruses from infected windows PCs.

Written By: George A.

MALWAREBYTES 3.0: NOW STRONGER AND SMARTER

MAKES ANTIVIRUS OBSOLETE

Four layers of malware-crushing tech. Smarter detection. Specialized ransomware protection. It's the security you've been looking for.

FREE DOWNLOAD **BUY NOW**

[What's the difference?](#)

The advertisement features a dark blue background with a stylized city skyline. A large, menacing robotic arm with a red 'X' on its chest is shown crushing a virus-like creature. The text is white and bold, with the main headline 'MAKES ANTIVIRUS OBSOLETE' being the largest. Two buttons, 'FREE DOWNLOAD' and 'BUY NOW', are prominently displayed. A link 'What's the difference?' is also present.

INTRODUCTION

You will need to have a second windows PC if the infected PC does not boot.



TOOLS:

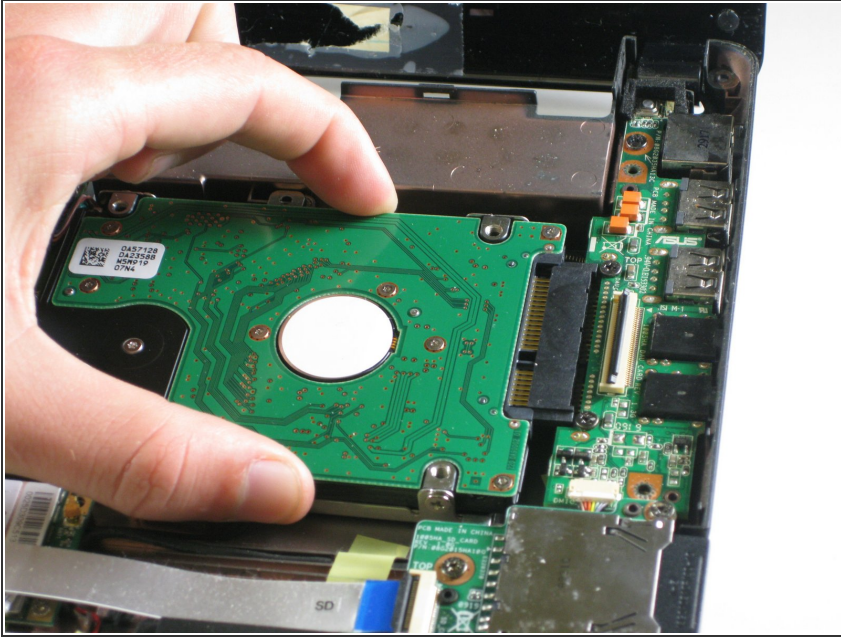
- [SATA to USB adapter or open SATA port inside PC.](#) (1)
-

Step 1 — Install Anti-Malware software



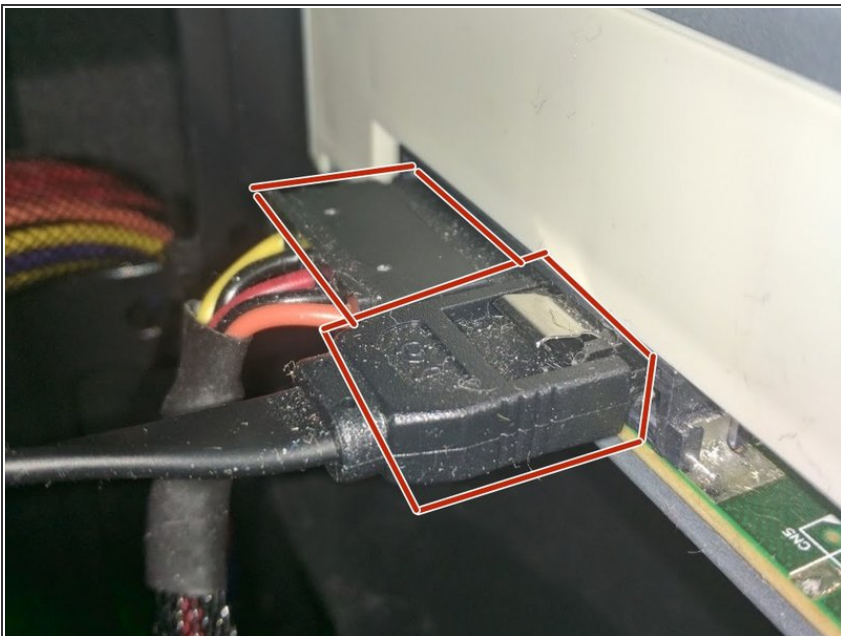
- On the PC you will be doing antivirus on, install the appropriate software. If the PC with malware does not turn on, install on a different one to do anti-virus.
- Malwarebytes is great anti-virus software. Go to the [website](#) and install it for free.
- Glarysoft Malware hunter is also good. Their website is [here](#).
- ① Other free anti-malware works too, but these are my favorites.

Step 2 — Remove your SATA HDD/SDD from the PC



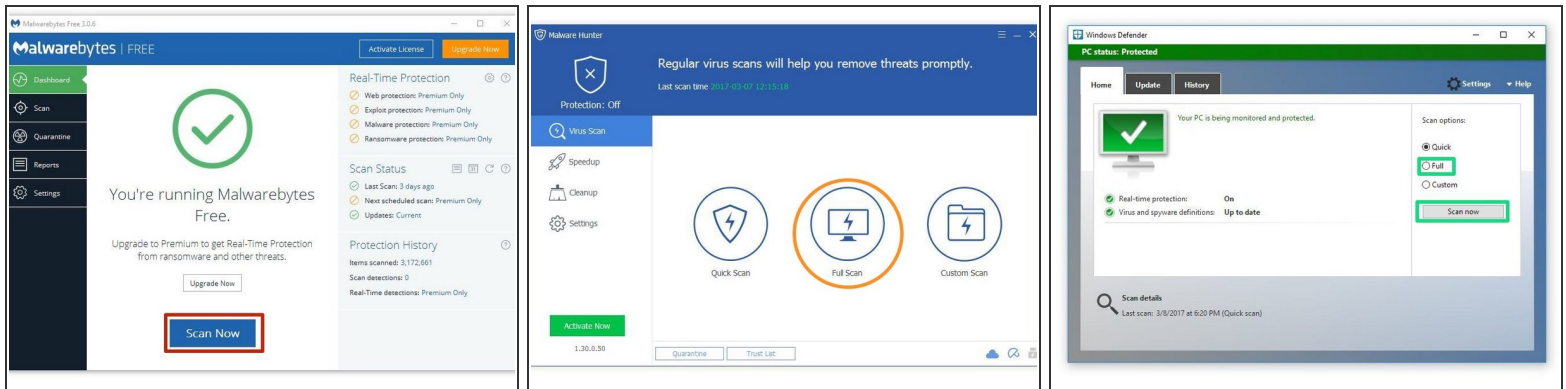
- ★ This step only applies to PCs that do not boot. If the PC with malware runs, then install the software directly onto it.
- Because assembly of different laptops and PCs vary so much, you will have to figure out or find a guide to remove your drive.

Step 3 — Connect the drive



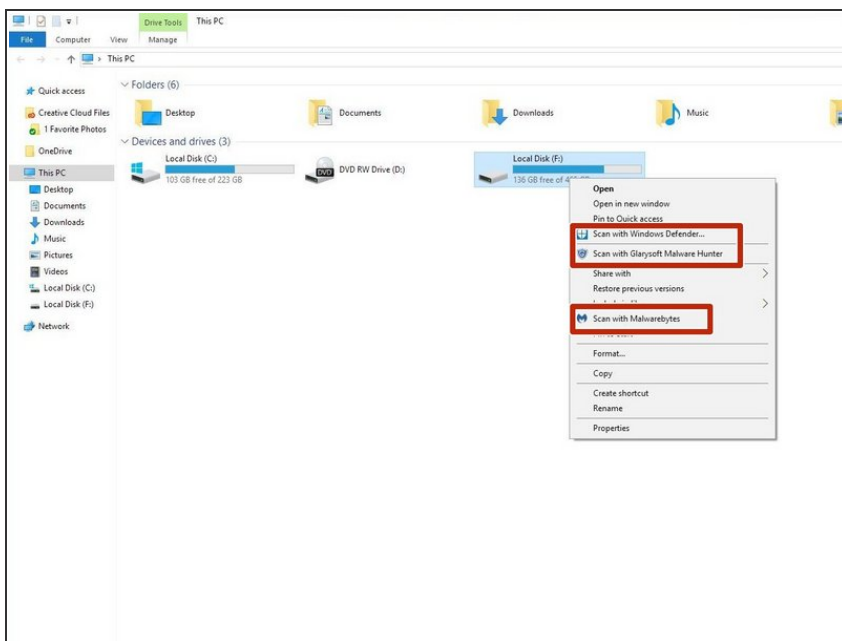
- ★ This step also only applies to PCs that don't boot.
- If your non-infected PC is a desktop, you may unplug the optical drive and plug the connections into the HDD or SSD. If it is a laptop, you will need a [SATA to USB adapter](#).
- i Shut down your desktop before unplugging the DVD drive and attaching the HDD.

Step 4 — Disinfect your PC



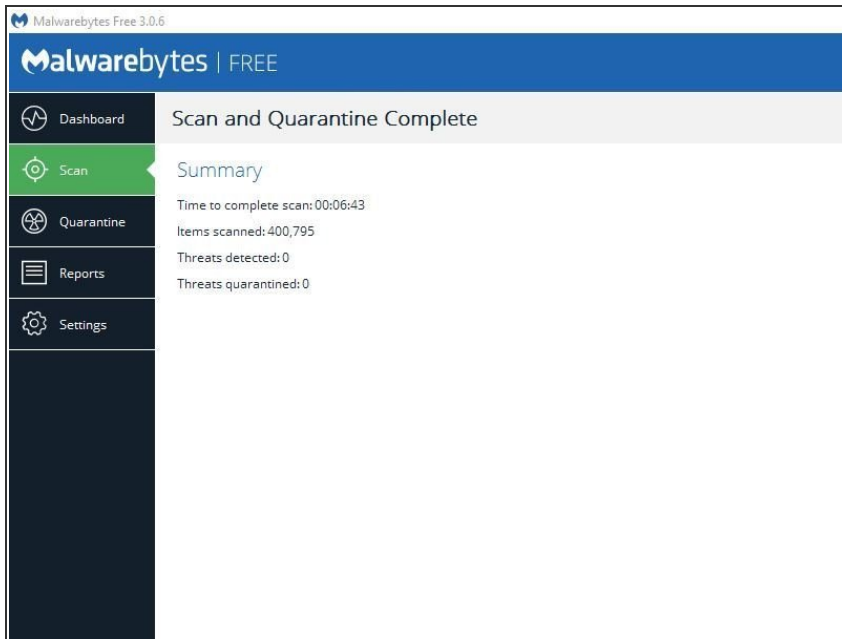
- Once you've installed the necessary programs and (if applicable) connected you're infected drive to you PC, you are ready to be the doctor.
- Run Malwarebytes.
- Run Glarysoft Malware Hunter.
- Windows defender comes preinstalled with Windows. Use that also.

Step 5 — Double checking another PCs drive.



- ✦ This is the last step for checking another PCs drive
- Go into file explorer, right click on the drive from the infected PC, and select each of the highlighted options.

Step 6 — Finito!



- All done! follow these instructions in reverse to put everything back.