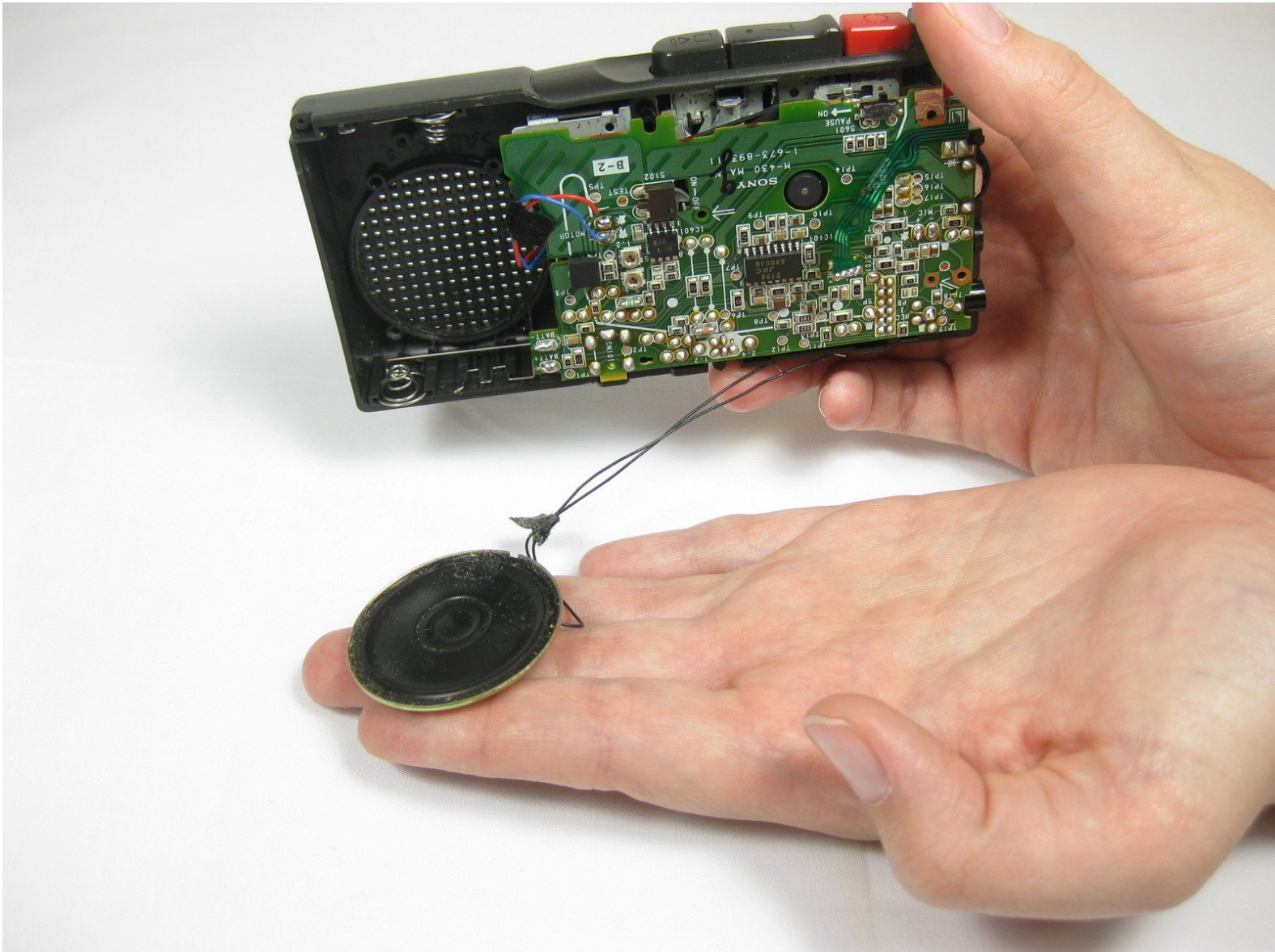




Sony M-430 Microcassette-Corder Speaker Replacement

This guide will show you how to replace a broken speaker.

Written By: Matt Teare





TOOLS:

- [Phillips #0 Screwdriver](#) (1)
 - [Soldering Iron](#) (1)
 - [Spudger](#) (1)
 - [Tweezers](#) (1)
-

Step 1 — Battery



- Find the arrow on the battery cover on the back of the device.
- While pressing down on the arrow, slide the cover towards the bottom of the recorder until it clicks.

Step 2



- Lift the cover and remove the batteries.

Step 3 — Back Cover



- Remove the battery cover by first tilting it so it is at a right angle with the rest of the device.
- Next, twist it to the side as shown in the second picture. The lid should simply snap off.

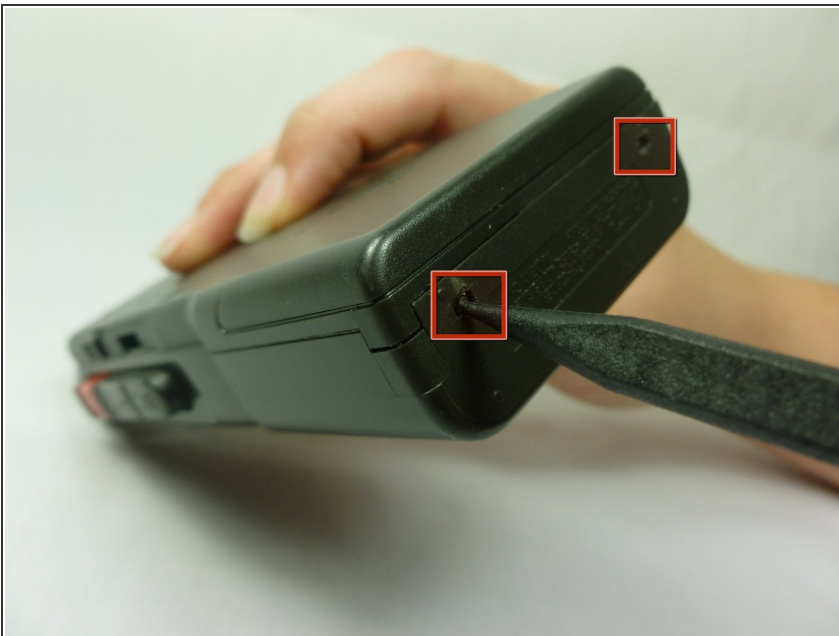
⚠ Be careful not to apply too much force, as the lid may break.

Step 4



- Use a #00 Phillips head screwdriver to remove the four (1.7x16 mm) screws from the back case.
- Next, use the same screwdriver to unscrew the (1.7X5 mm) screw, which is located inside the battery compartment.

Step 5



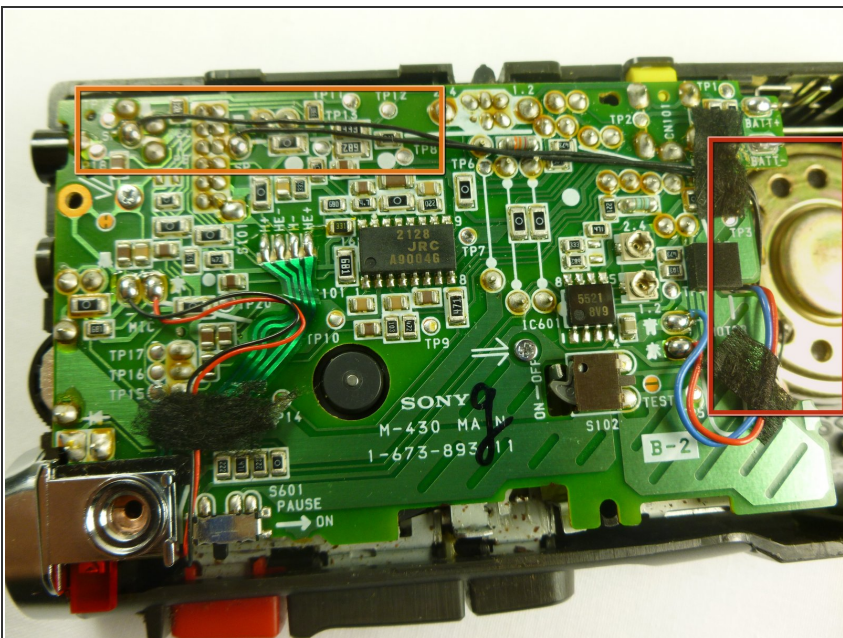
- Use a spudger to push in the two tabs located on the bottom of the device.
- It works best to push the tabs at an upward angle (towards the top of the battery compartment)
- It may take a decent amount of force in order to push in the tabs.

Step 6



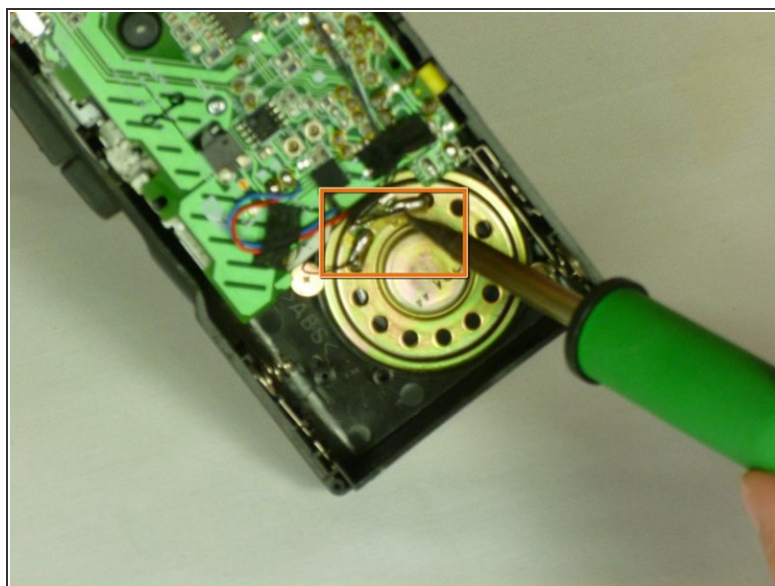
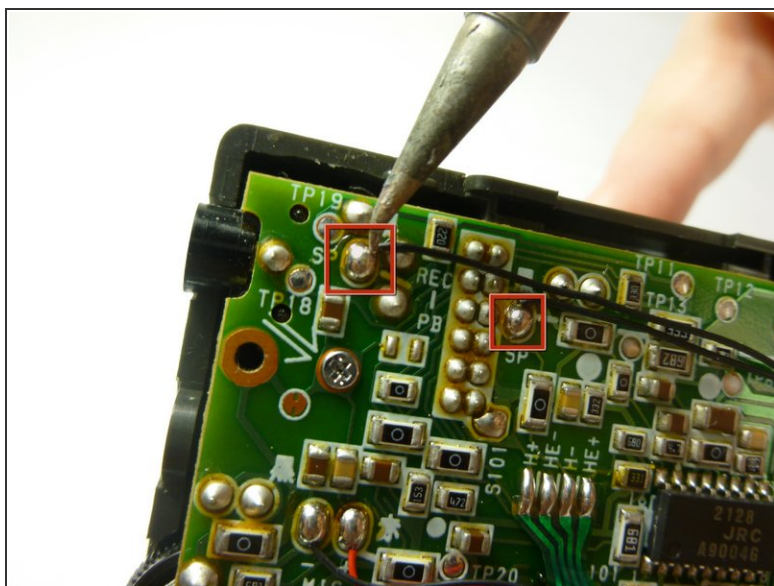
- With a firm grip on the larger half, remove the back cover by lifting first on the battery area.
- The back cover should lift cleanly off.

Step 7 — Speaker



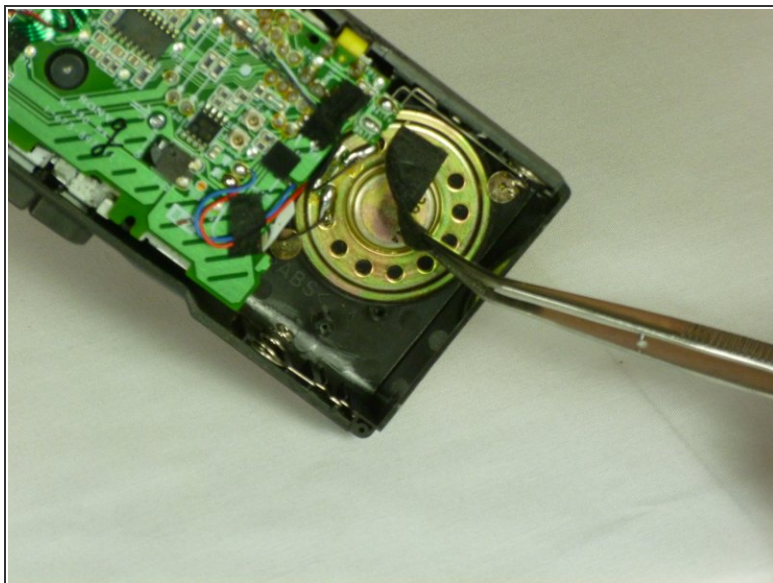
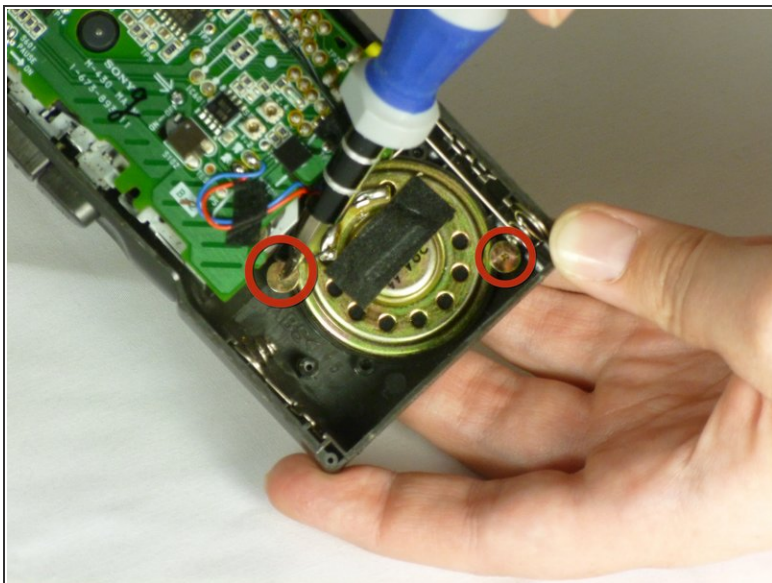
- The speaker is the large gold circular piece attached under where the batteries would normally be.
- It is connected to the device with two black wires that run along one side of the motherboard, as shown on the top of the picture.

Step 8



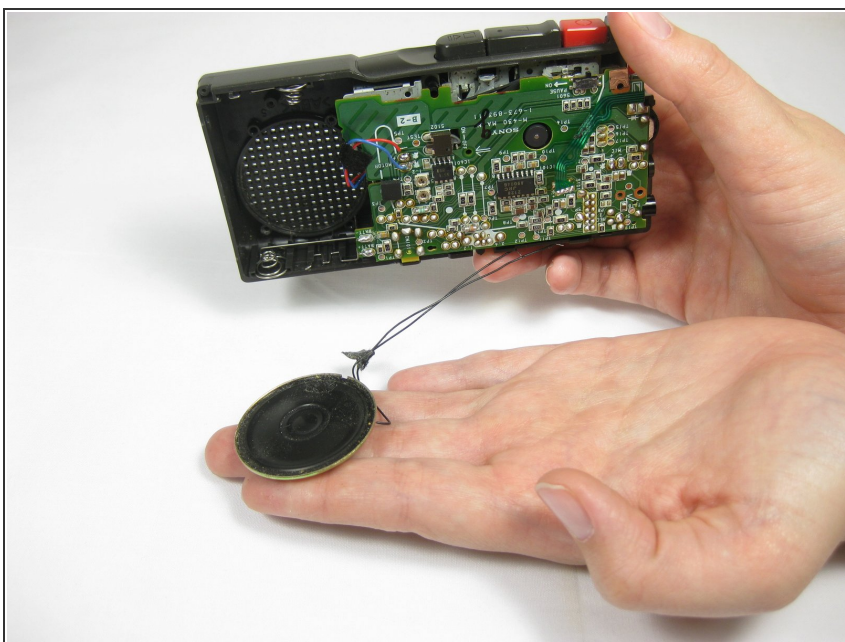
- Depending on the replacement speaker you have, there are two places you can desolder the wire.
- If your replacement speaker has a wire already attached to it, desolder the old wire from where it connects to the motherboard.
- If the replacement speaker has no wire, desolder the old wire where it connects to the broken speaker.

Step 9



- Unscrew the 2 Phillips head screws (2x2.5 mm) around the edge of the speaker with a #00 Phillips screwdriver.
- Use a pair of tweezers to remove the black tape on the speaker. Put the tape on the back of the new speaker.

Step 10



- Now that the speaker is detached from the device, simply tilt the device over and let the speaker fall out.

To reassemble your device, follow these instructions in reverse order.