



Fujitsu LIFEBOOK P7010D Hard Drive Replacement

Written By: Nicholas Ross



TOOLS:

Anti-Static Wrist Strap (1)

Phillips #0 Screwdriver (1)

Spudger (1)

Step 1 — Battery



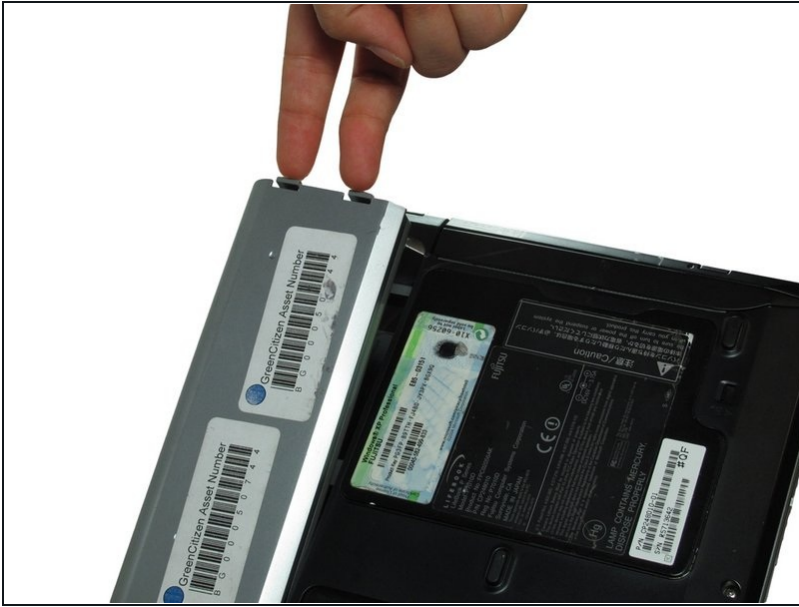
- Place the laptop upside down on a table.

Step 2



- Locate the battery (the grey block). Find the two tabs on one end of the battery near the side of the laptop.
- Using your fingers, press both tabs down at once until they are fully depressed.

Step 3



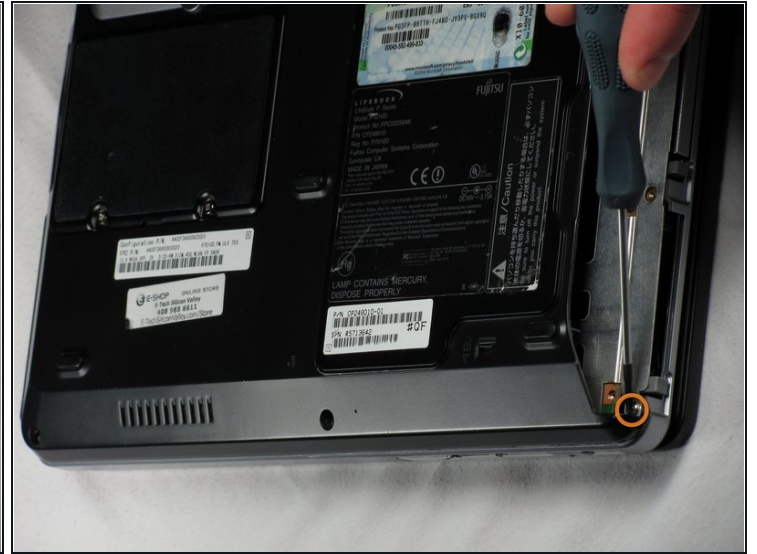
- While holding the tabs down, slowly pivot the battery up.
- The battery is now free and safe to pull out.

Step 4 — Disc Drive



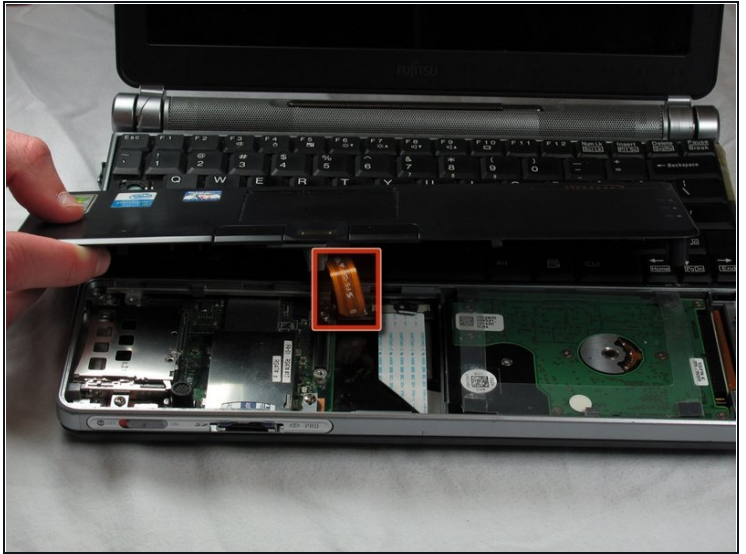
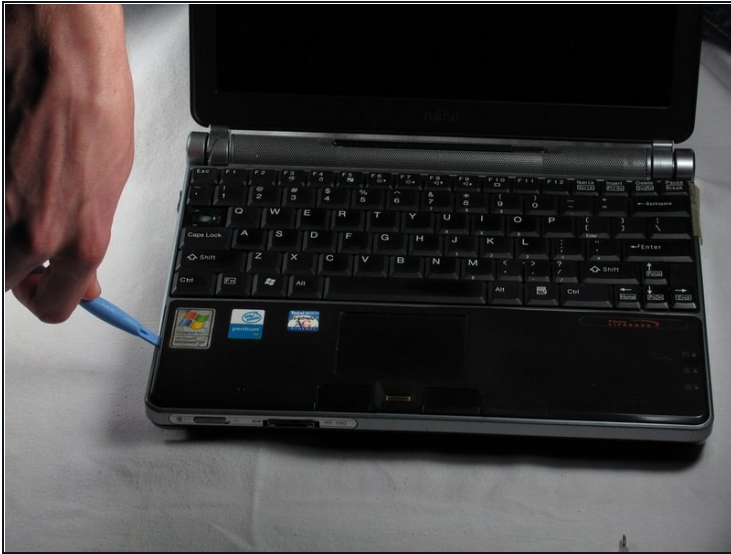
- Push the tab down as far as possible using your finger or plastic opening tool to unlock the disc drive.
- While still holding the tab down, use your other hand to pull out the disc drive straight out of its place.

Step 5 — Hard Drive



- On the bottom of the laptop, find the bottom-plate screw holes. They are located near the disc drive. Parallel to them is a 2.4mm screw.
- After locating the 2.4mm screw, use a Phillips #0 screwdriver to unscrew.

Step 6

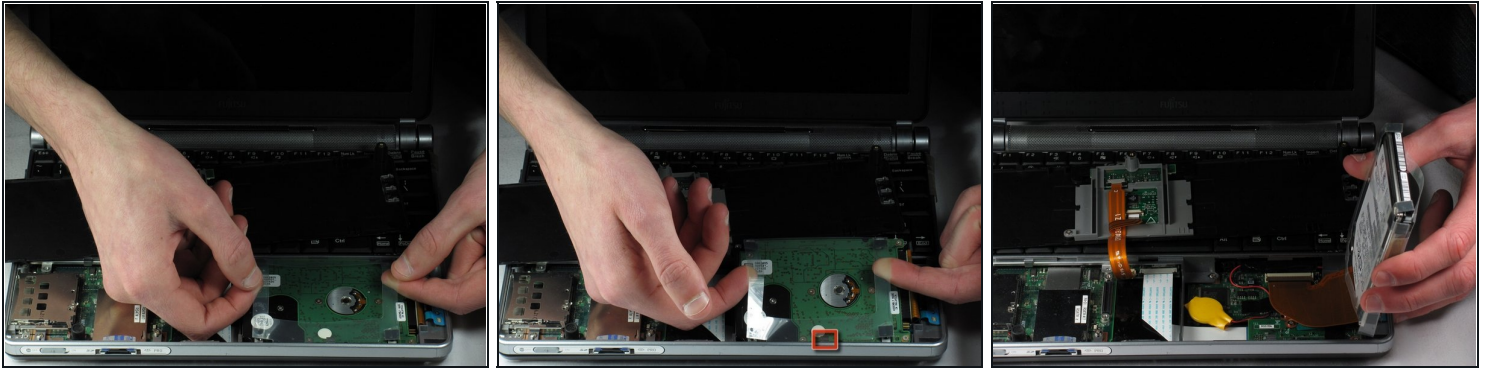


- Flip the laptop over and open it facing you.
- Use a spudger to lift the bottom black cover on both sides.

⚠ The cover is connected to an aluminum strip, so be careful lifting it.

- ① For the proceeding steps, put on an [anti-static wrist strap](#) and clip it to something metal. Ensure that it's clipped to a grounded metal in order to protect the delicate circuitry inside the computer.

Step 7



- Once the black cover is lifted, flip it and set it on the keyboard.
- Locate the hardware disc on the right side and gently lift it out. Place it on the side of the laptop.

⚠ The hard drive is connected with a strip, so be careful when lifting it out.

Step 8



- Flip the hard drive on its side.

⚠ The pins connected to the hard drive are extremely fragile. Take care in handling the next few steps.

- Hold the hard drive and use a spudger, preferably a wider one, to remove the black pin holder on the side where it touches the hard drive.
- Gently wiggle the black pin holder back and forth, on each side, until the holder comes off.

To reassemble your device, follow these instructions in reverse order.