



HP Pavilion x360 m3-u001dx USB Port Shield Replacement

Written By: Subhleen





TOOLS:

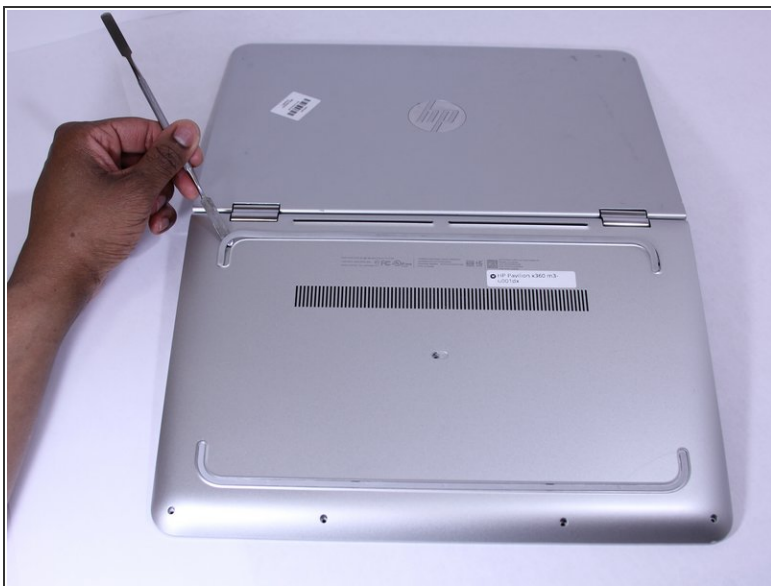
- [Phillips #00 Screwdriver](#) (1)
- [Metal Spudger](#) (1)
- [iFixit Opening Tools](#) (1)

Step 1 — Keyboard



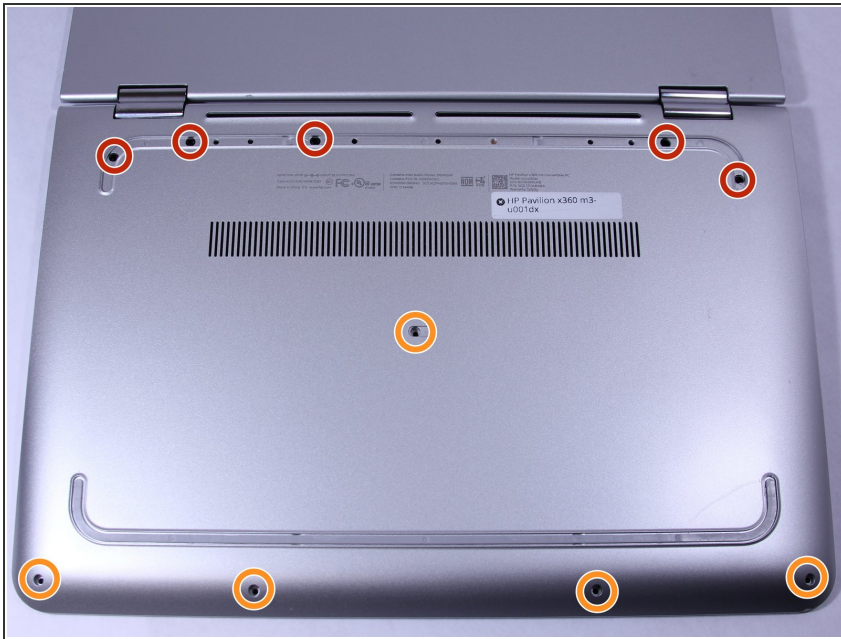
- Shut down the computer.
 - Disconnect the power and all external devices connected to the computer.
- ⚠ Working on your device while it is turned on may result in electric shock.

Step 2



- Use a Metal Spudger and remove the rubber foot closet from the bottom of the laptop.

Step 3



- Remove all of the screws located on the bottom of the laptop:
 - 5 Phillips 2.4 x 5.7 mm screws
 - 5 Phillips 2.0 x 5.0 mm screws
 - ① Make special note of each screw and screw lock size and location during removal and replacement.


Step 4



- Turn the computer over onto its base, with the computer open and the keyboard facing upward.

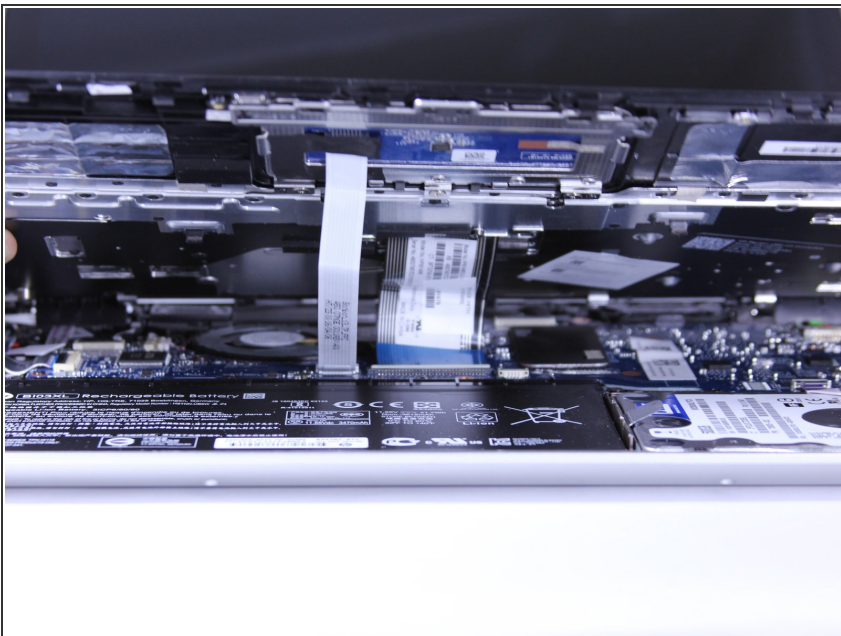
Step 5




 The keyboard is attached internally by clips. Use a small amount of force when removing the keyboard.

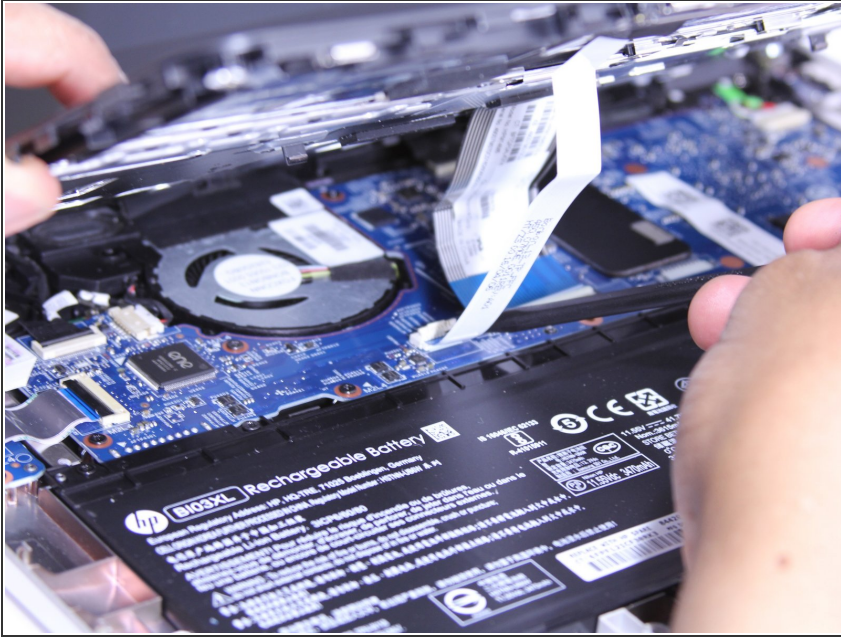
- Use the Plastic Opening Tool to separate the keyboard from the base of the laptop.

Step 6



- Raise the keyboard slightly to access the touch pad and keyboard cables.
-  Raising the keyboard too far or with excessive force may cause damage to the keyboard, touch pad cables, or their connectors.

Step 7



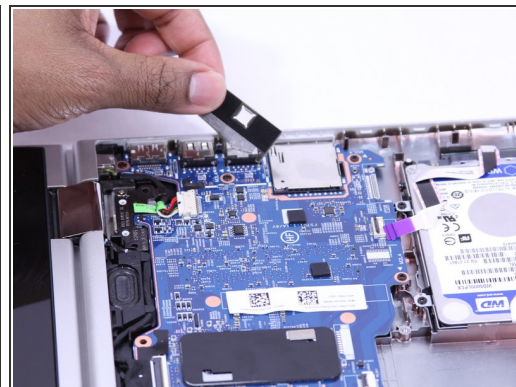
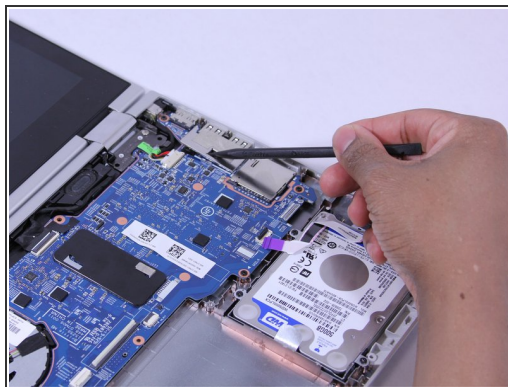
- Disconnect the ribbon cables attaching the touch pad and keyboard to the system board (motherboard).
- Using the Heavy-Duty Spudger lift up the plastic locks connecting the ribbon cable to the motherboard.
- Use the blue plastic tab on the ribbon cable to pull it out from the lock on the motherboard.

Step 8



- Lift the keyboard away from the base of the laptop.

Step 9 — USB Port Shield



- (You don't NEED to remove this shielding as you can remove the board with it still there.)
- Remove the adhesive strip.
- Lift the shield away from the base of the laptop.

Follow these instructions in reverse order to reassemble your device.