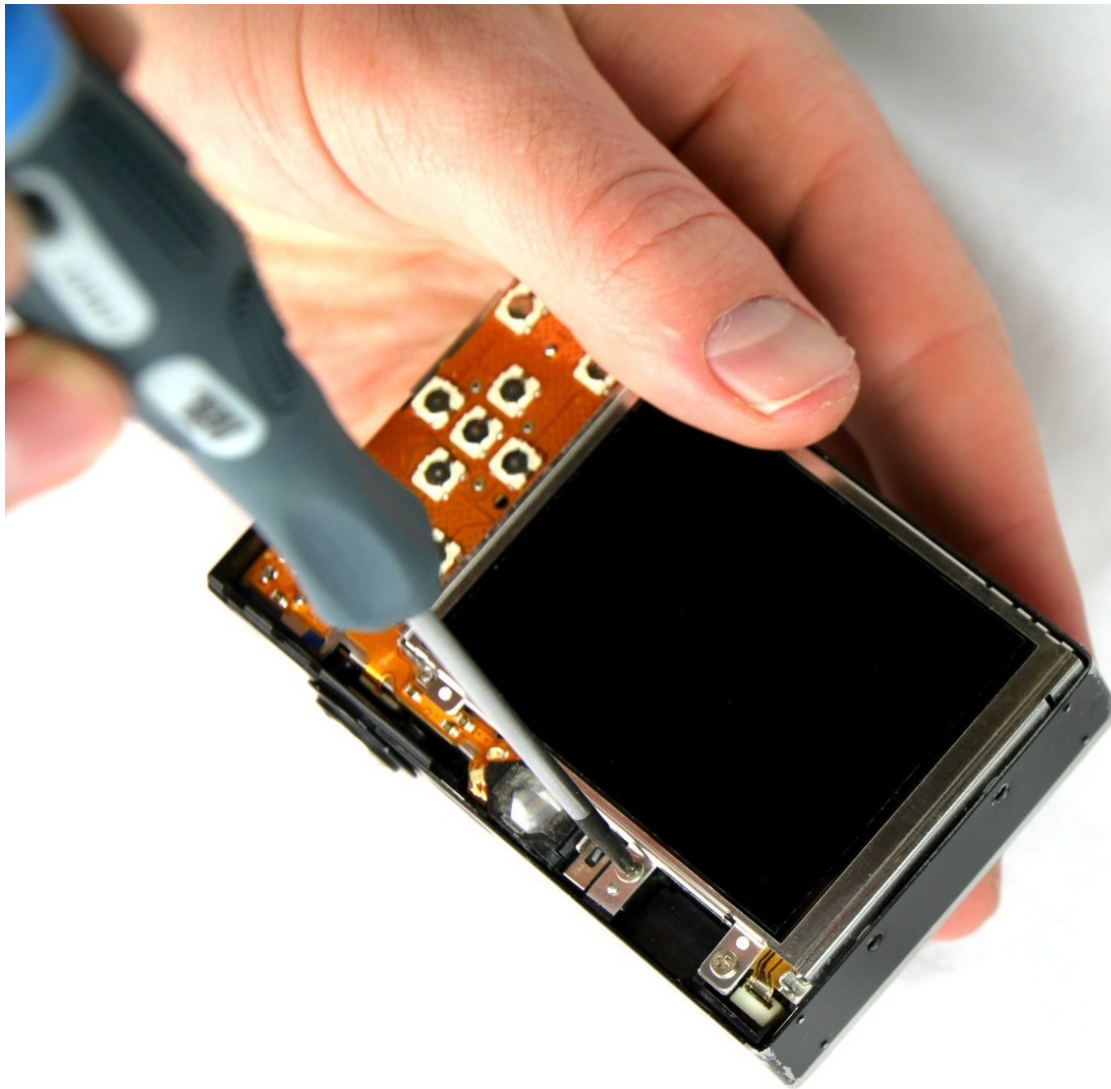




# Canon PowerShot SD1000 LCD Screen Replacement

This is the removal of the Canon PowerShot SD1000 LCD screen in order to clean or replace it.

Written By: Phillip Phung

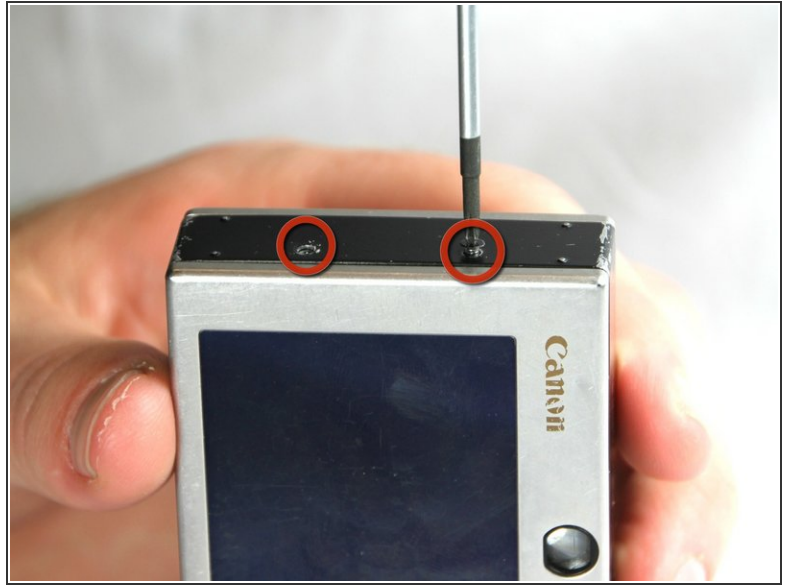




## TOOLS:

- [Phillips #00 Screwdriver](#) (1)
  - [Spudger](#) (1)
-

## Step 1 — Back Panel



- Remove the two 2.9 mm screws from the side panel closest to the camera lens.

## Step 2



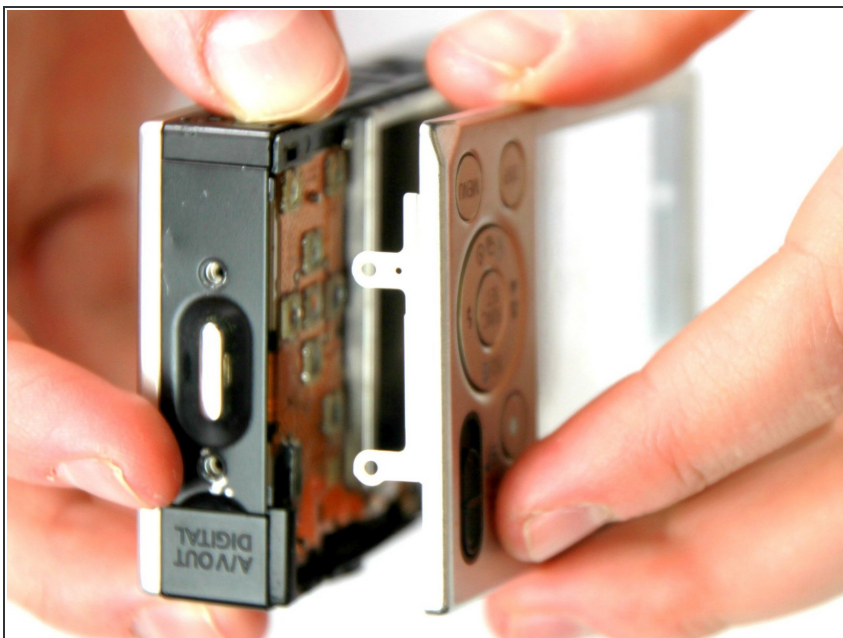
- Remove the two 2.9 mm screws from the camera bottom panel.

### Step 3



- Remove the two 2.9 mm screws from the side panel farthest from the lens.

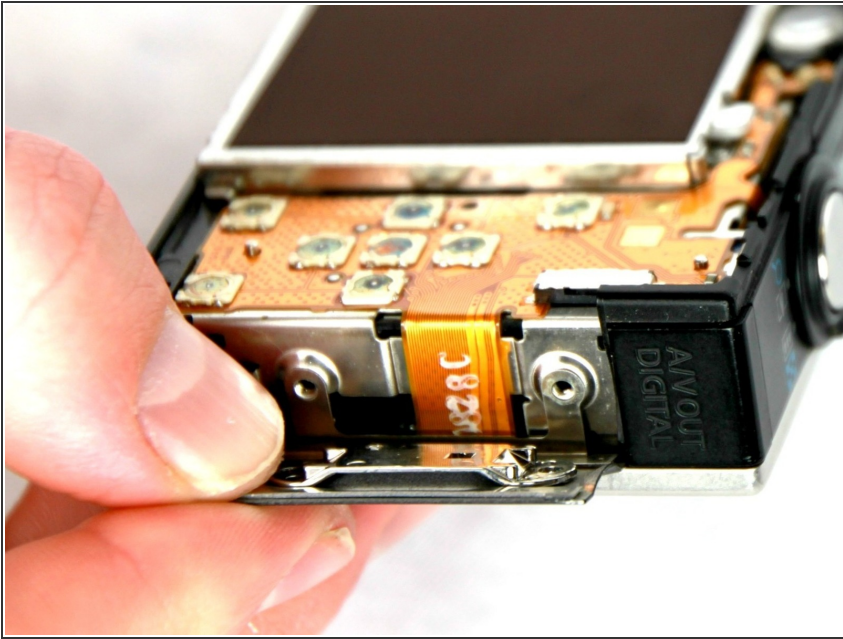
### Step 4



- Pull the back panel away from the camera body, starting at the end with the function buttons.

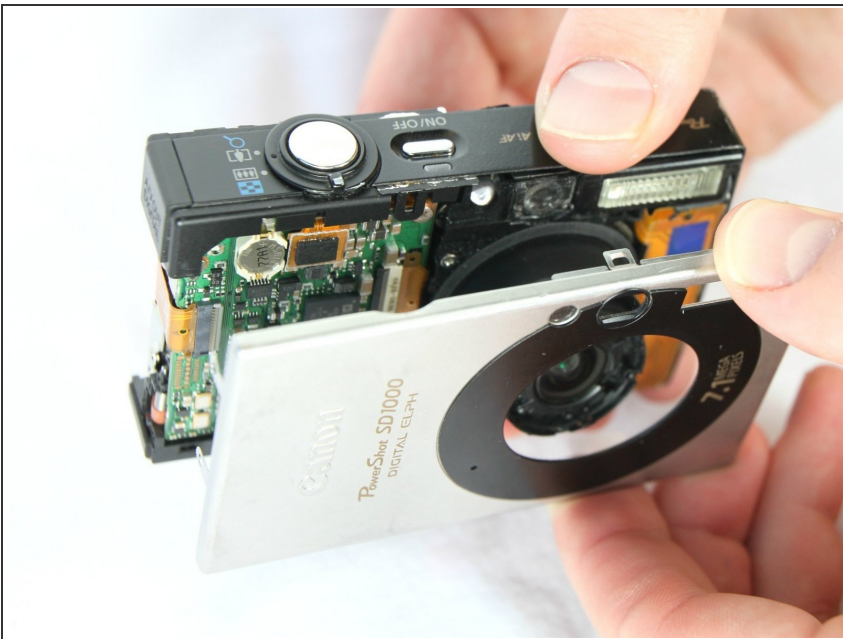


## Step 5



- Remove the small cover panel and the attached wrist strap mount.

## Step 6 — Front Case



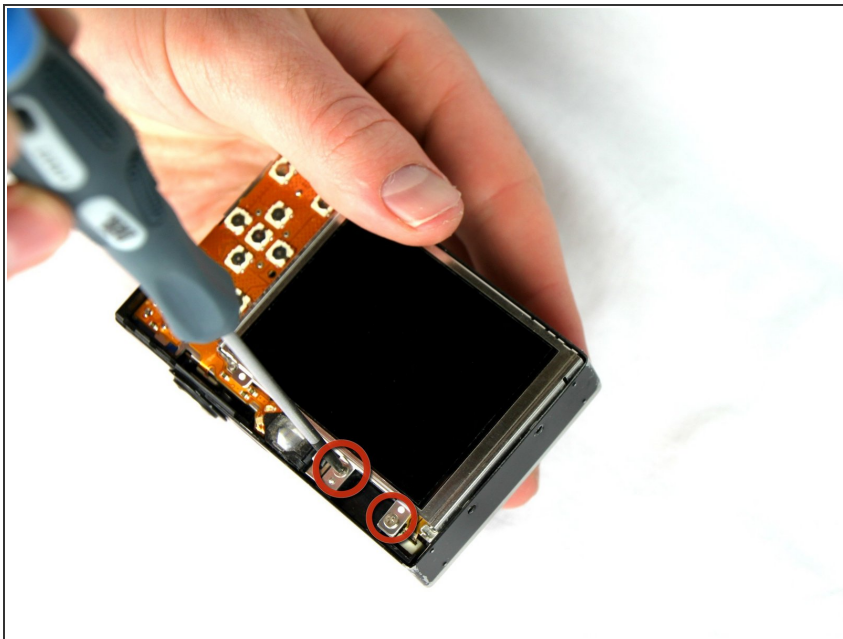
- Remove the front cover by gently pulling it away from the camera body.

## Step 7



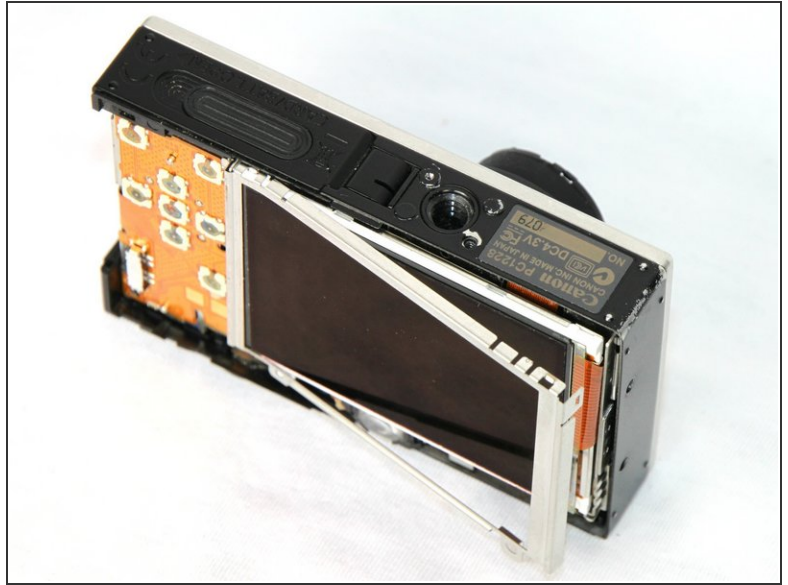
- Place the front cover, back cover, and wrist strap mount in a safe place until you are ready for reassembly.

## Step 8 — LCD Screen



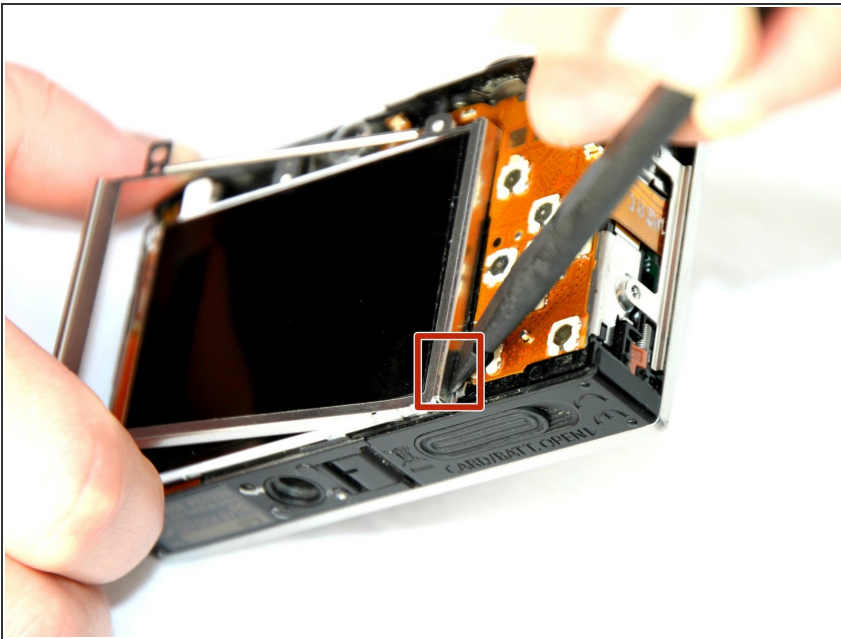
- Remove the two 2.4 mm screws located at the top of the LCD panel.

## Step 9



- Pull up the metal frame surrounding the LCD screen starting at the side of the camera.

## Step 10



- Push the metal frame away from the metal tab using the spudger to detach the frame.
- Rotate the metal frame upwards.
- ⓘ The metal framing should be attached by a metal tab towards the bottom of the camera, near the function buttons.



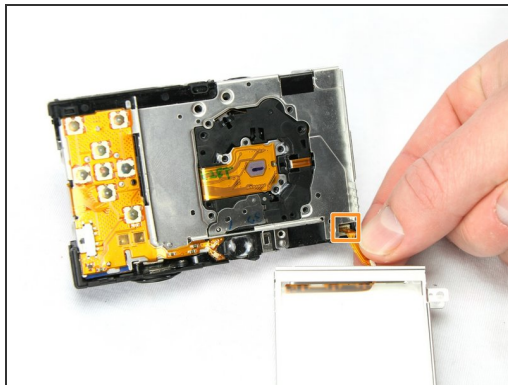
## Step 11



- Carefully lift the metal frame from the camera.
- Remove the black LCD screen, leaving the thin lens pieces in place.

**⚠ BE CAREFUL;** both components are attached by an orange connector ribbon and cannot be removed yet.

## Step 12



- Carefully pull on the orange connector ribbon to disconnect the LCD screen.
  - The LCD screen can be pulled out of the frame before disconnecting its connector ribbon.
- i** Tweezers are helpful to disconnect the ribbon.



To reassemble your device, follow these instructions in reverse order.