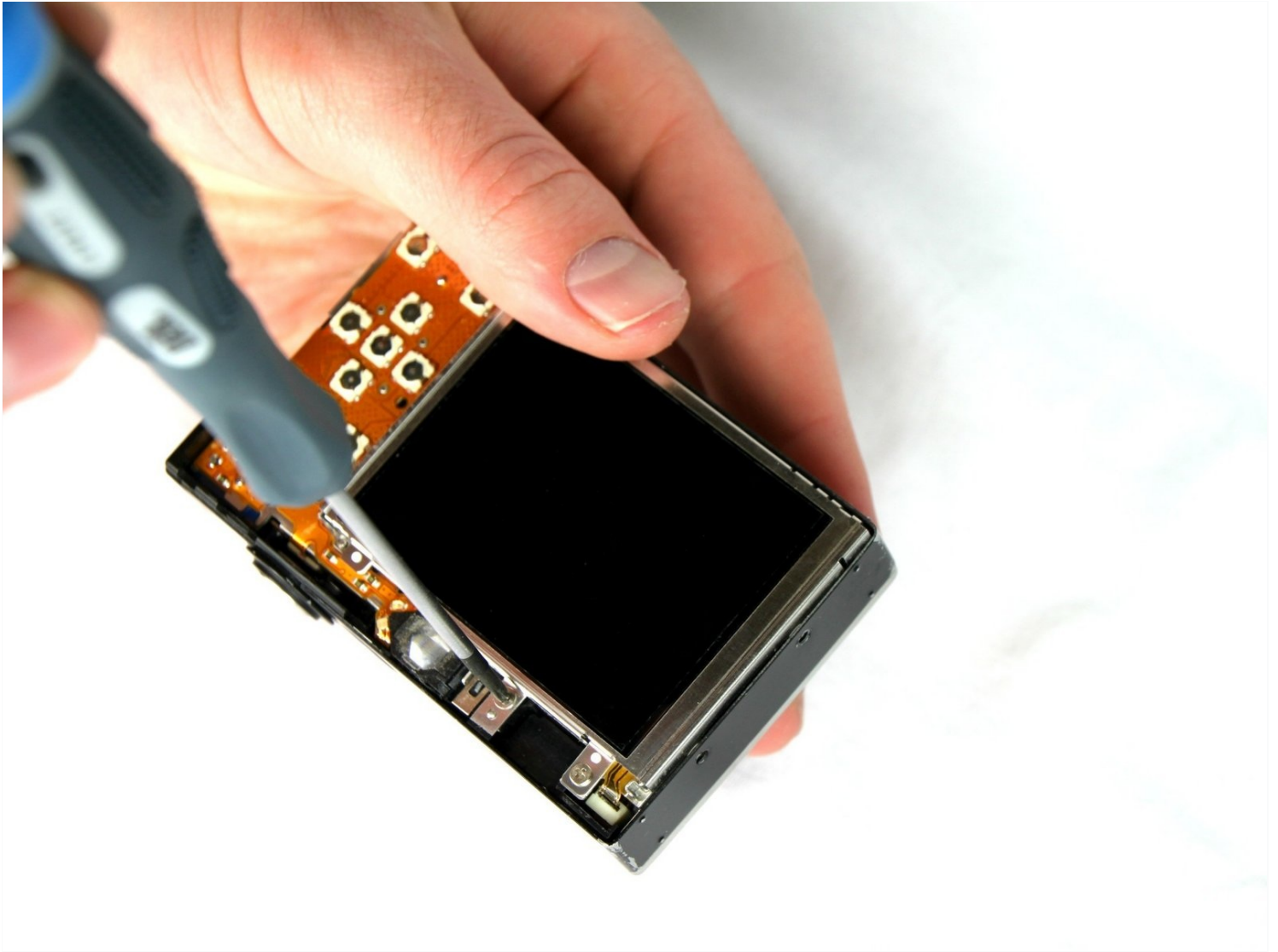




Canon PowerShot SD1000 LCD Screen Replacement

Written By: Phillip Phung



TOOLS:

Phillips #00 Screwdriver (1)

Spudger (1)

Step 1 — Back Panel



- Remove the two 2.9 mm screws from the side panel closest to the camera lens.

Step 2



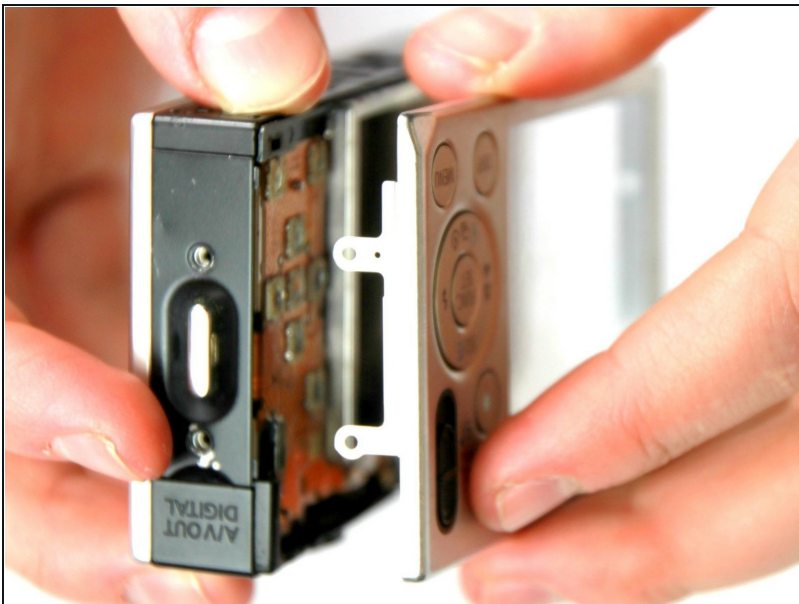
- Remove the two 2.9 mm screws from the camera bottom panel.

Step 3



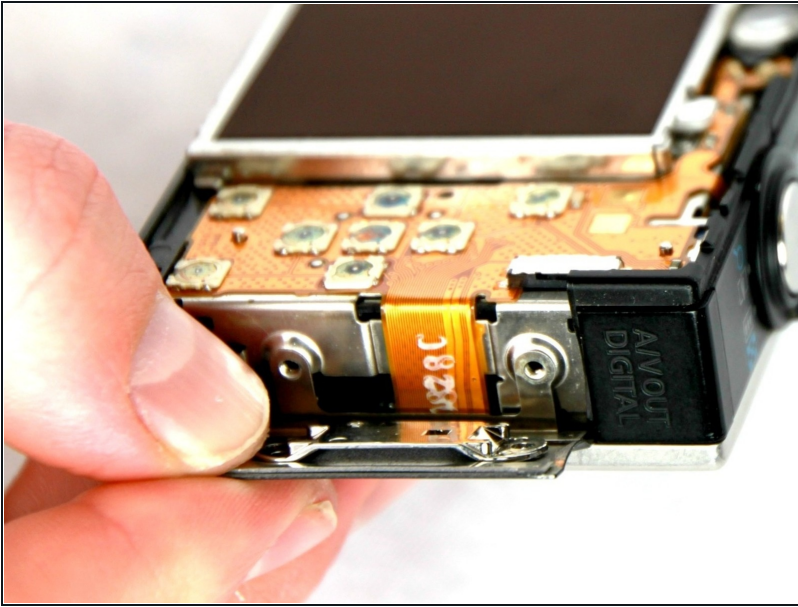
- Remove the two 2.9 mm screws from the side panel farthest from the lens.

Step 4



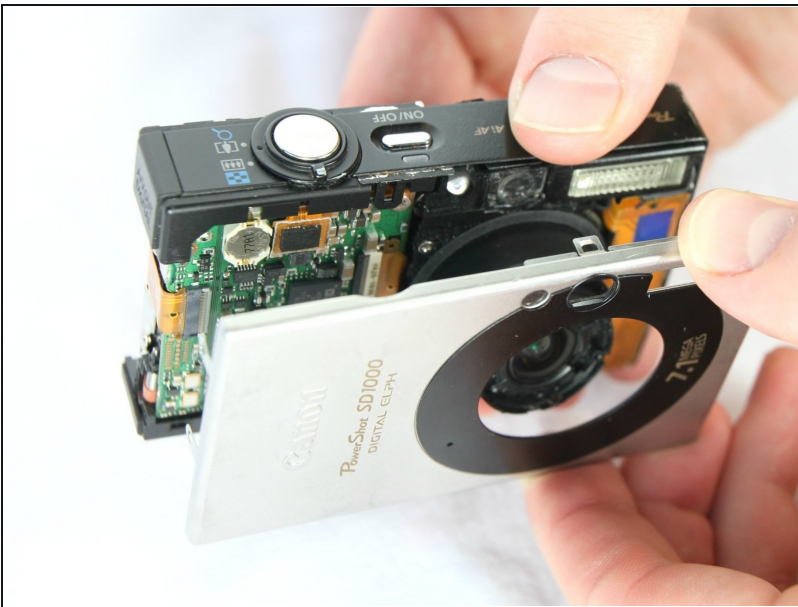
- Pull the back panel away from the camera body, starting at the end with the function buttons.

Step 5



- Remove the small cover panel and the attached wrist strap mount.

Step 6 — Front Case



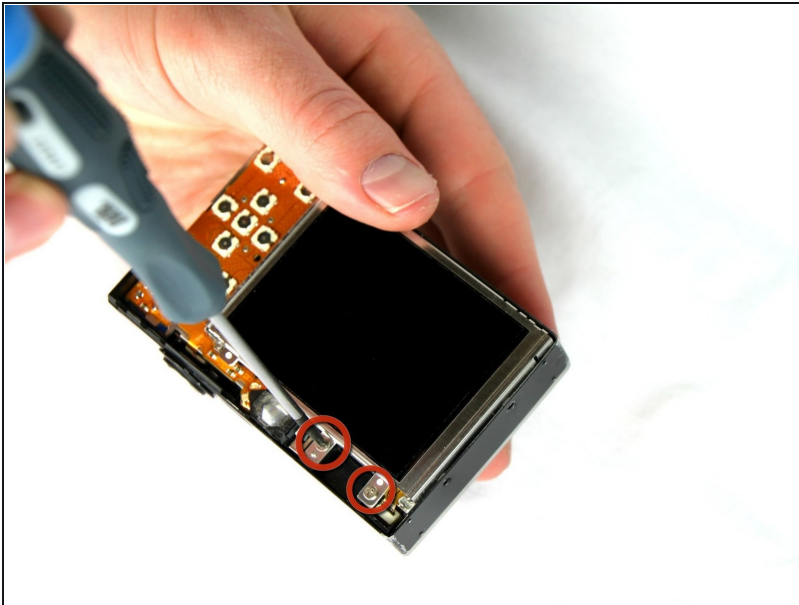
- Remove the front cover by gently pulling it away from the camera body.

Step 7



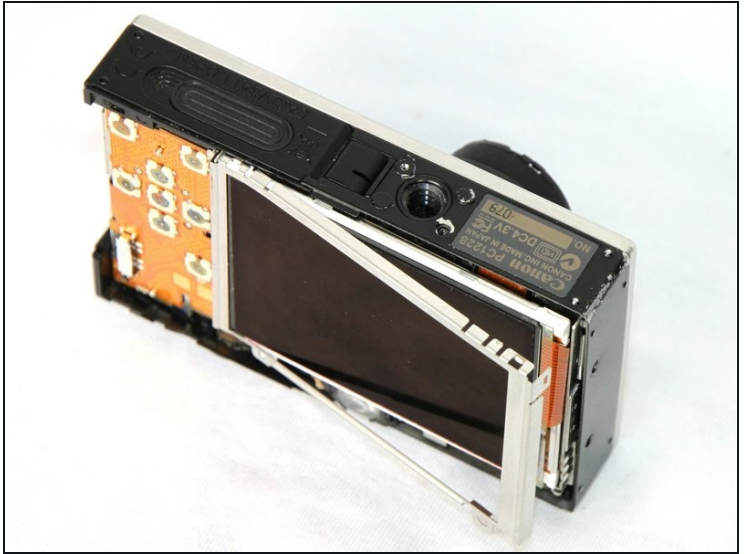
- Place the front cover, back cover, and wrist strap mount in a safe place until you are ready for reassembly.

Step 8 — LCD Screen



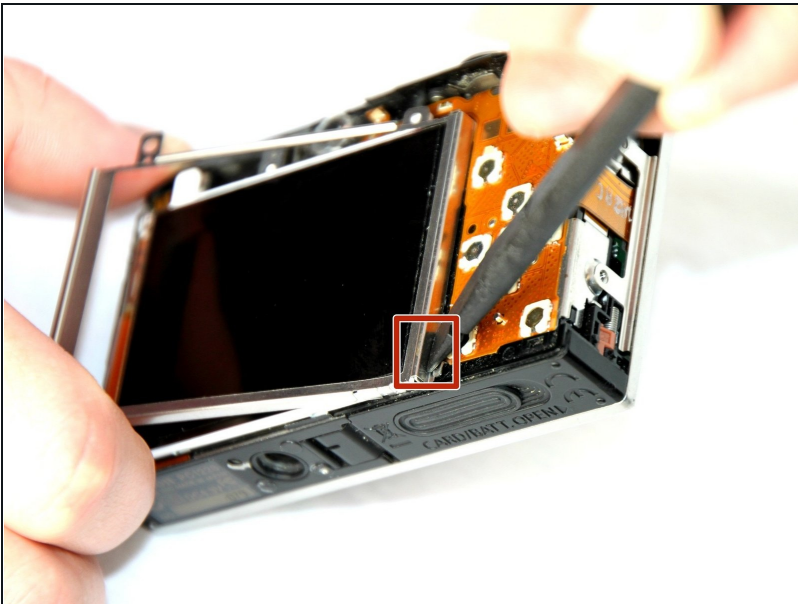
- Remove the two 2.4 mm screws located at the top of the LCD panel.

Step 9



- Pull up the metal frame surrounding the LCD screen starting at the side of the camera.

Step 10



- Push the metal frame away from the metal tab using the spudger to detach the frame.
- Rotate the metal frame upwards.
- ① The metal framing should be attached by a metal tab towards the bottom of the camera, near the function buttons.

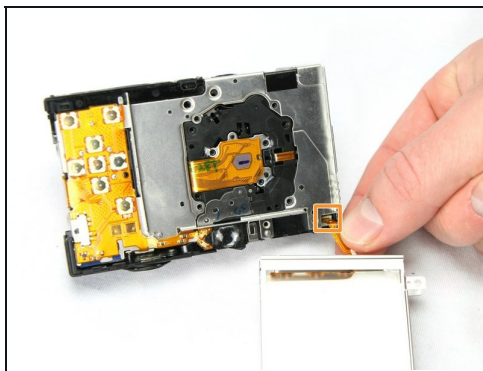
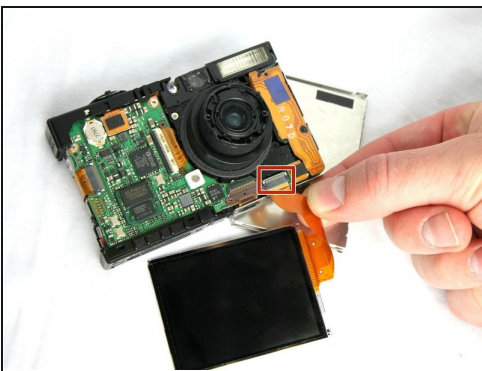
Step 11



- Carefully lift the metal frame from the camera.
- Remove the black LCD screen, leaving the thin lens pieces in place.

⚠ BE CAREFUL; both components are attached by an orange connector ribbon and cannot be removed yet.

Step 12



- Carefully pull on the orange connector ribbon to disconnect the LCD screen.
 - The LCD screen can be pulled out of the frame before disconnecting its connector ribbon.
- ① [Tweezers](#) are helpful to disconnect the ribbon.

To reassemble your device, follow these instructions in reverse order.