



Samsung Galaxy Tab 3 10.1 Rear-Facing Camera Replacement

Written By: Corey Brown



TOOLS:

Phillips #000 Screwdriver (1)
iFixit Opening Picks (Set of 6) (1)
Spudger (1)
Tweezers (1)
Nylon Tipped Tweezers (1)

PARTS:

Galaxy Tab 3 10.1 Rear Camera (1)

Step 1 — Rear Case



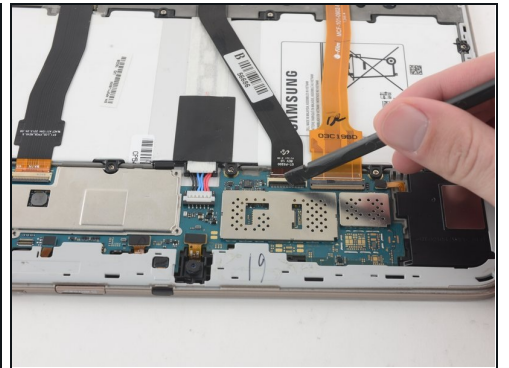
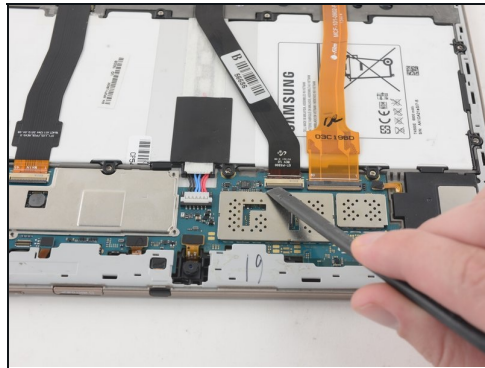
- Insert an opening pick between the rear case and the plastic rim.
- ① You may need to add multiple picks to detach the clips.
- Slide the pick along the edge of the rear case until you release the plastic clips attaching the rear case to the display.
- Continue to slide the pick around the edge of the rear case until all clips are released.

Step 2



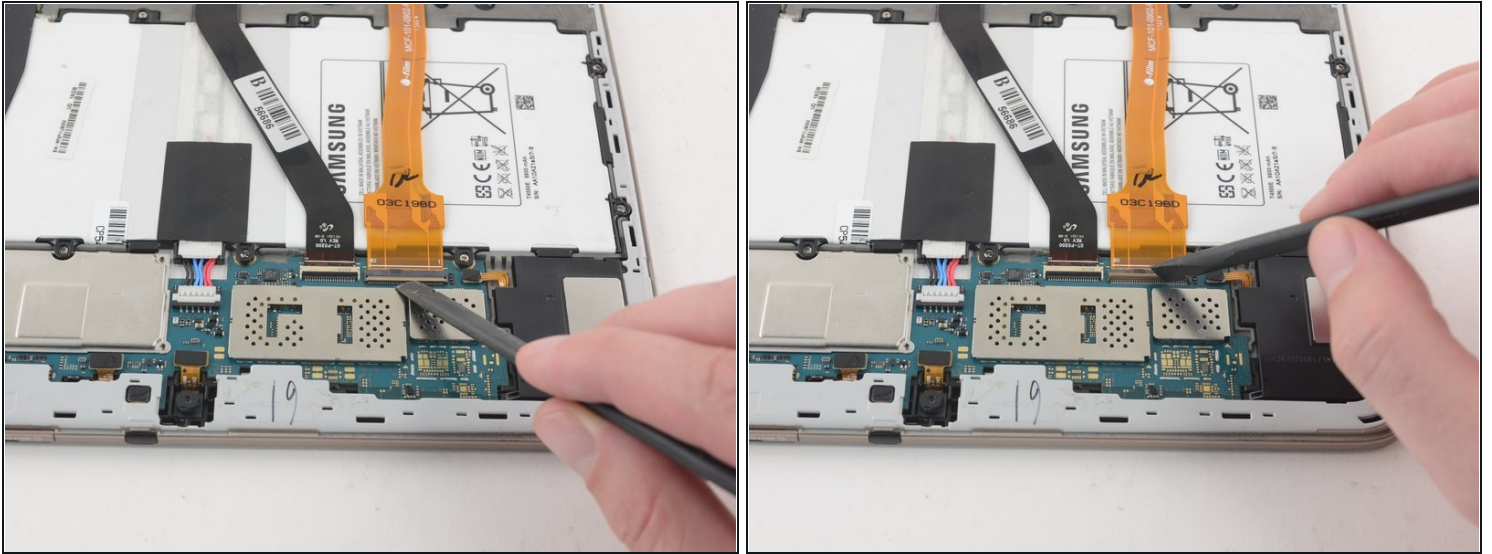
- Lift the case up to remove it.

Step 3 — Battery



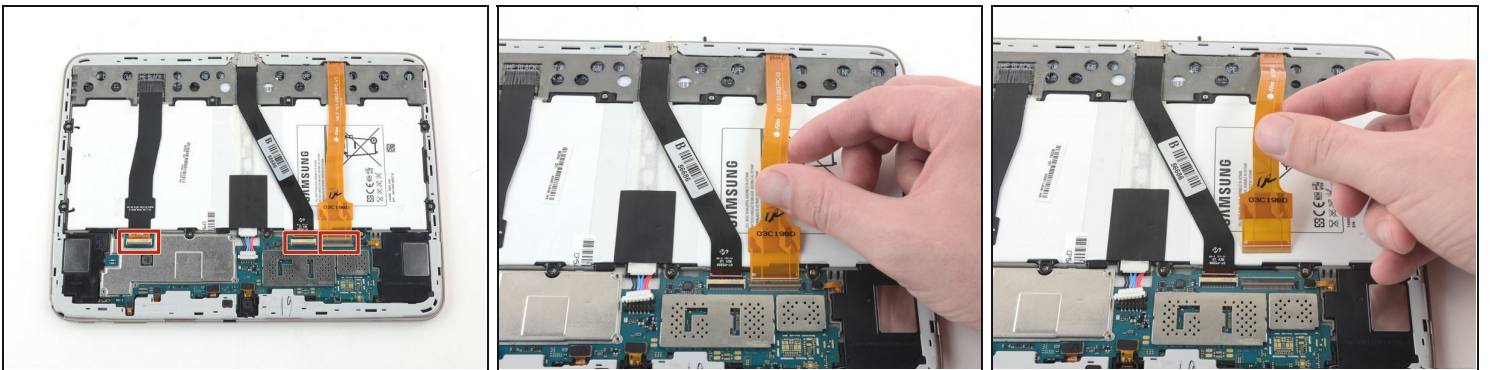
- Use the flat end of a nylon spudger to pry up the **black** plastic tabs securing the two ZIF connectors.

Step 4



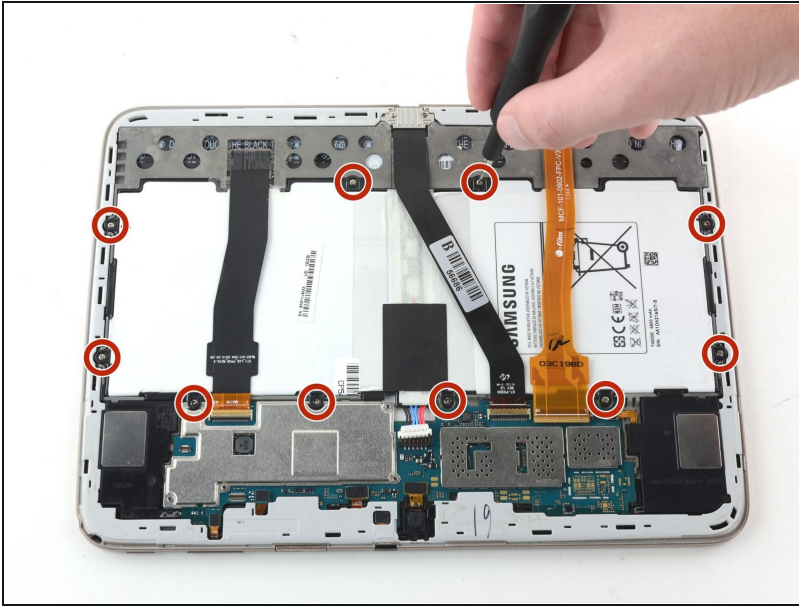
- Use the flat end of a nylon spudger to pry up the **brown** plastic tab securing the orange ribbon cable.

Step 5



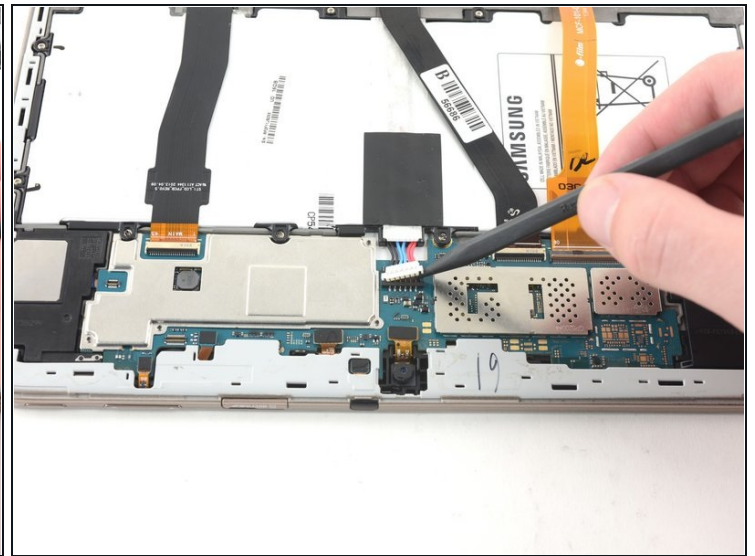
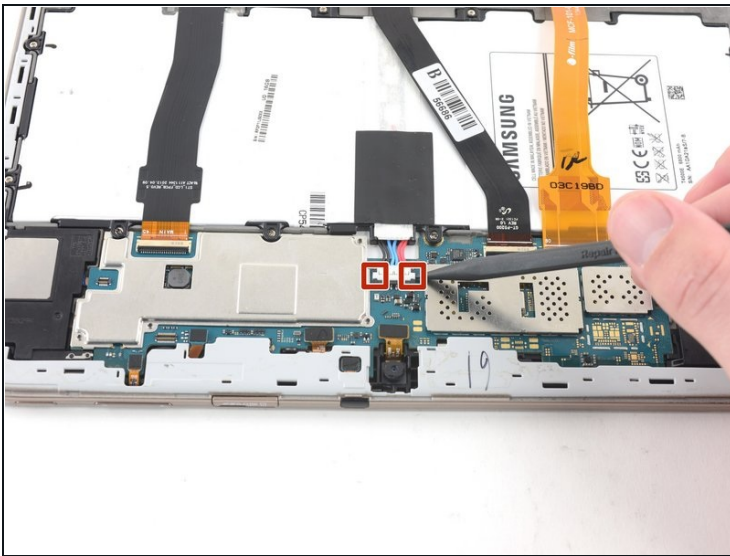
- Remove all three ribbon cables by gently pulling the cables away from the ZIF connectors.

Step 6



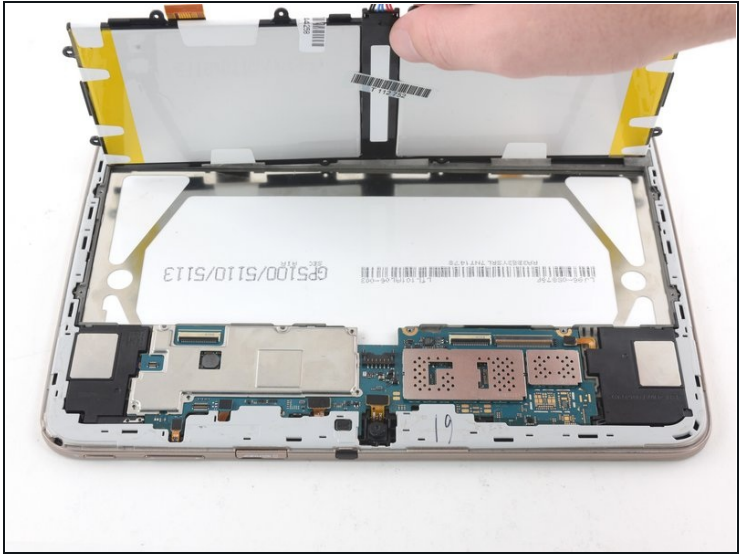
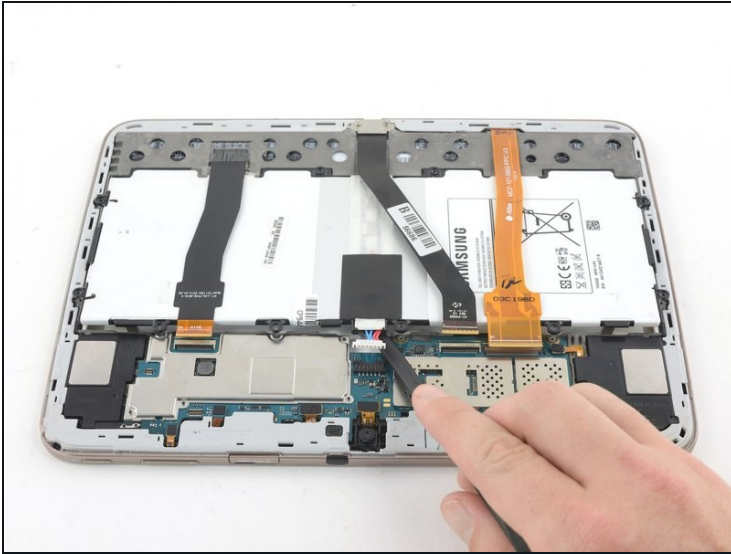
- Use a Phillips #000 screwdriver to remove the ten 3mm screws securing the battery to the chassis.

Step 7



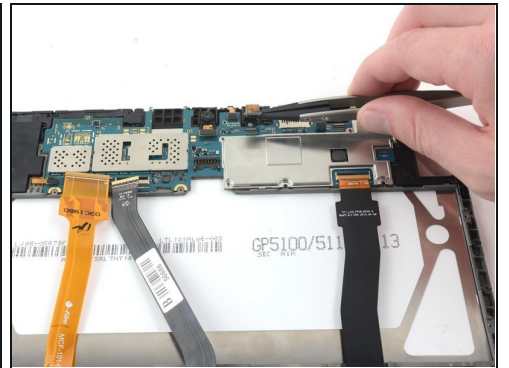
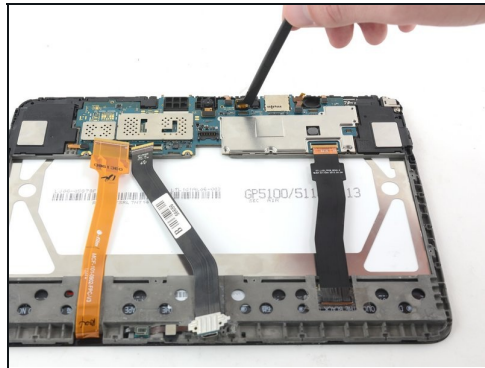
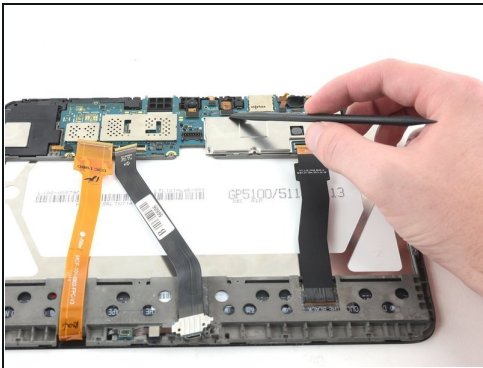
- Use the pointed end of a nylon spudger to pry the two battery connections away from the motherboard.

Step 8



- Lift with a nylon spudger to remove the battery.

Step 9 — Rear-Facing Camera



- Use the flat end of a plastic spudger to pry up the press-fit connector from the motherboard.
- Remove the camera by gently pulling upward with a pair of [tweezers](#).

To reassemble your device, follow these instructions in reverse order.