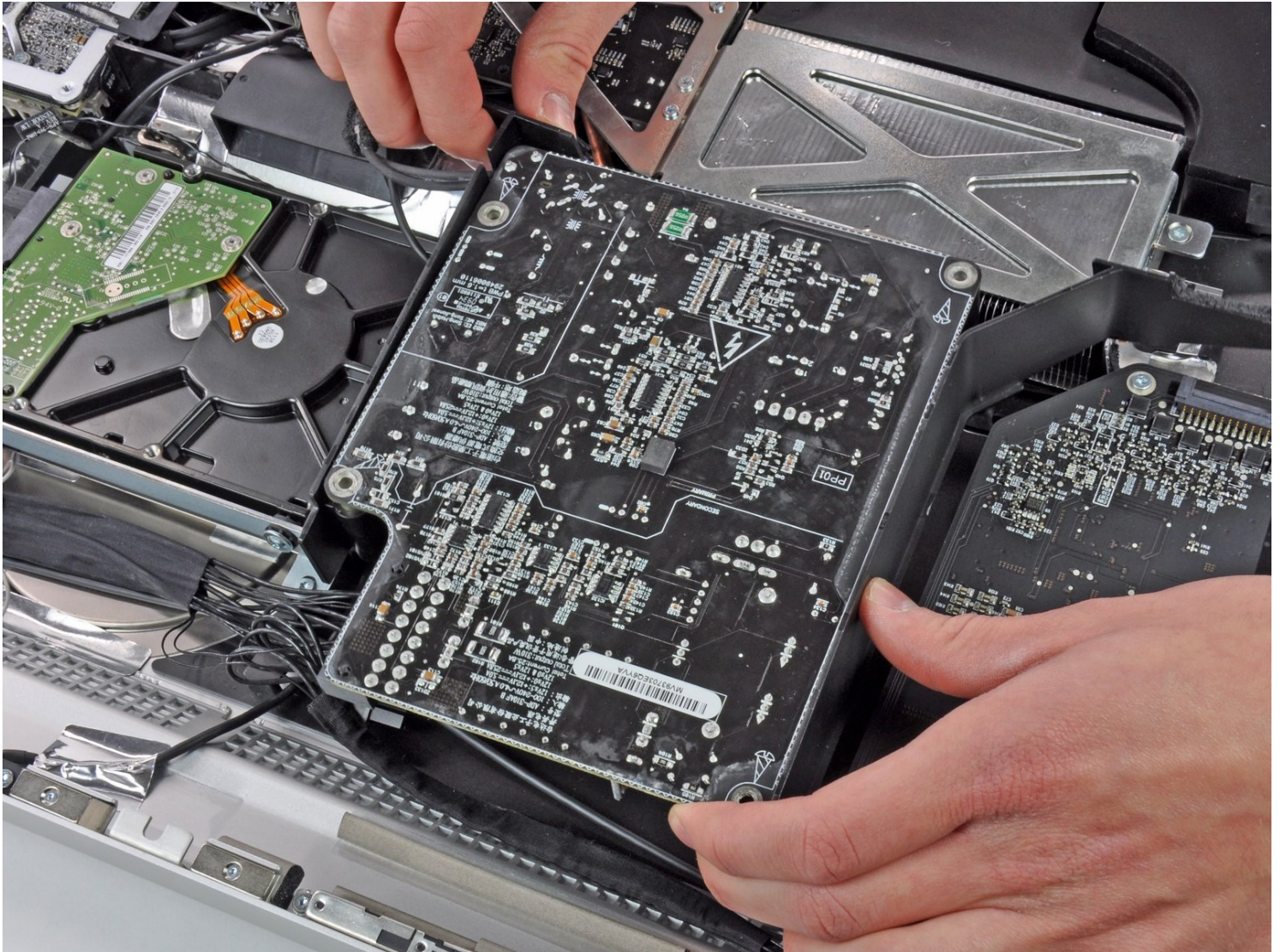




iMac Intel 27" EMC 2429 Power Supply Replacement

This guide will help you replace the power supply.

Written By: Phillip Takahashi



INTRODUCTION

This guide will help you replace the power supply.

TOOLS:

Heavy-Duty Suction Cups (Pair) (1)
Paper Clip (1)
Spudger (1)
TR10 Torx Security Screwdriver (1)

PARTS:

iMac Intel 27" EMC 2309, 2374, 2390 or
2429 Power Supply (1)

Step 1 — Glass Panel



- Stick a heavy-duty suction cup near each of the two top corners of the glass panel.
- ① To attach the [suction cups](#), first position the suction cup with the movable handle parallel to the face of the glass panel (as indicated in the second picture).
- While lightly holding the suction cup against the glass, raise the movable handle until it is parallel with the other handle (as indicated by the third picture).
- ① If your suction cups refuse to stick, try cleaning both the glass panel and the suction cup with a damp soft, lint-free cloth. (Dampen with distilled water, and if needed, an equal ratio of distilled water and white vinegar for best results.)
- ⚠ Do not use the suction cups to carry the display glass because if one of them fails to stick, you could drop the screen and break it.
- ① The original iMac box makes a good place to store the glass panel. Otherwise, a padded horizontal surface, like a towel on a desk, will do nicely.

Step 2



- Gently lift the glass panel perpendicular to the face of the LCD, enough to clear the steel mounting pins attached along the underside of the top edge of the glass panel.
- Pull the glass panel away from the lower edge of the iMac and carefully set it aside.
 - ⚠ Don't use the suction cups to carry the glass panel—if either one loses its grip, the panel could fall and break.
 - ⚠ After setting the glass panel down safely, be sure to release the suction cups, as the suction force over time can crack the glass.
- ☑ During reinstallation, be sure to meticulously clean the inside of the glass panel and the face of the LCD as any dust or fingerprints trapped inside will be annoyingly visible when the machine is turned on.

Step 3 — Display

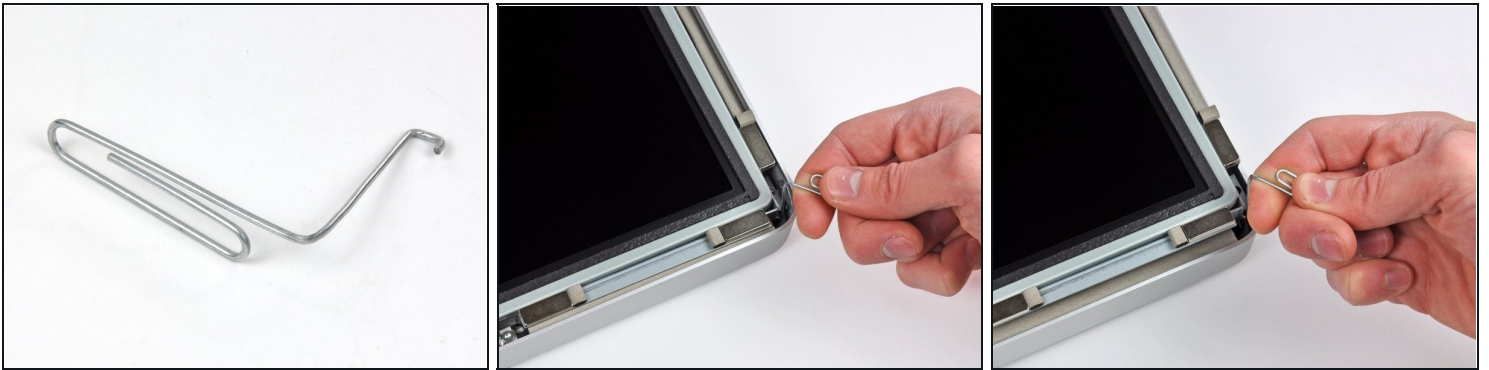


- Remove the eight T10 Torx screws securing the LCD to the outer case.

⚠ Be careful not to touch the display as the oil from your fingers may leave a residue that can be difficult to remove.

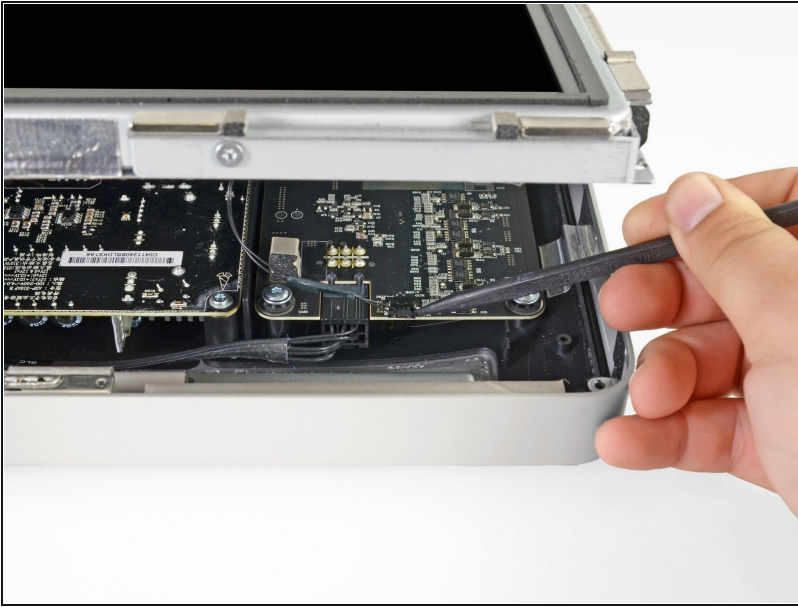
ⓘ If necessary, peel the EMI gaskets located near the top center edge of the display assembly.

Step 4 — Display



- Carefully lay the iMac stand-side down on a flat surface.
 - ① Due to tight tolerances, you will have to use a thin hooked tool to lift the display out of the outer case. As seen in the first picture, we made one out of a bent paperclip. A pair of angled [tweezers](#) can also work well.
 - Use a thin hooked tool to lift one side of the top edge of the display by its steel outer frame.
 - ① After lifting the top edge of the display on one side, hold it out of the outer case while you use a hooked tool to lift the other side.
 - Raise and hold the display high enough to access the cables.
- ⚠ Do not lift the top edge of the display out of the outer case too far, as several short ribbon cables still connect the two components.

Step 5



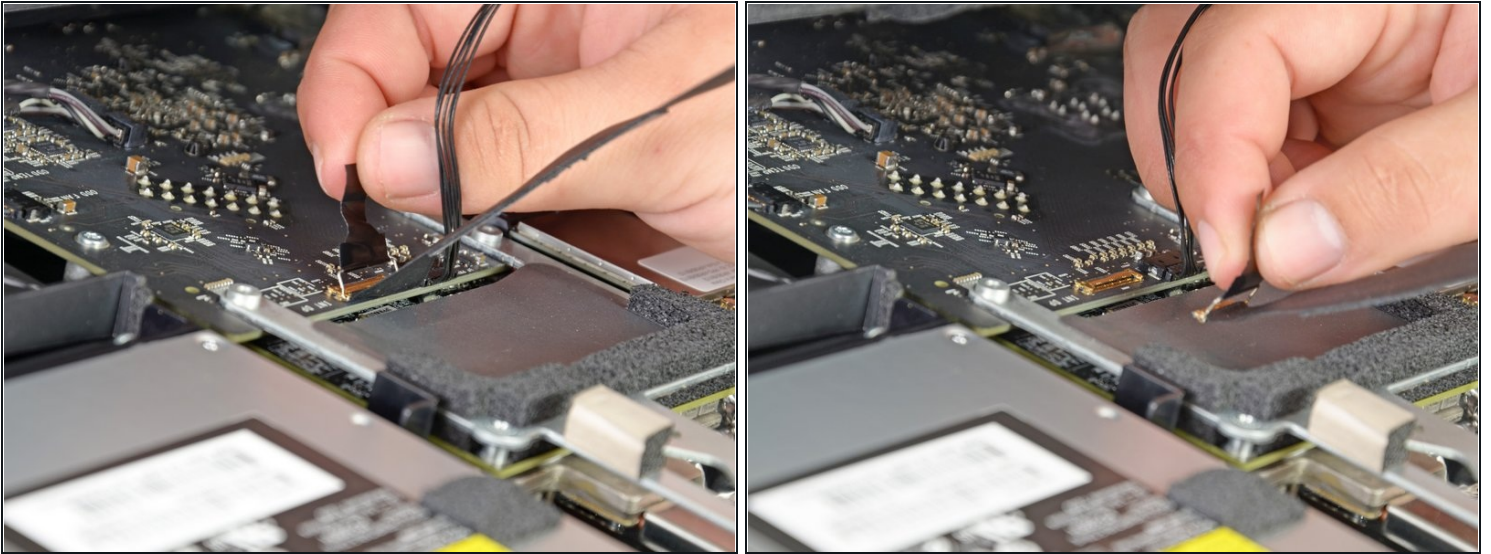
- Disconnect the vertical sync cable in the upper left corner of the screen. Use the tip of a spudger to push on the connector's side tabs and gently **walk** it out of its socket.

Step 6



- ⚠ This step brings your hands close to the exposed rear of the power supply. To avoid a high-voltage shock from the many large capacitors attached to the board, do **NOT** touch the rear of the power supply.
- Disconnect the LED backlight driver cable with your hand by pressing the tab down and sliding it towards the bottom of the display.

Step 7

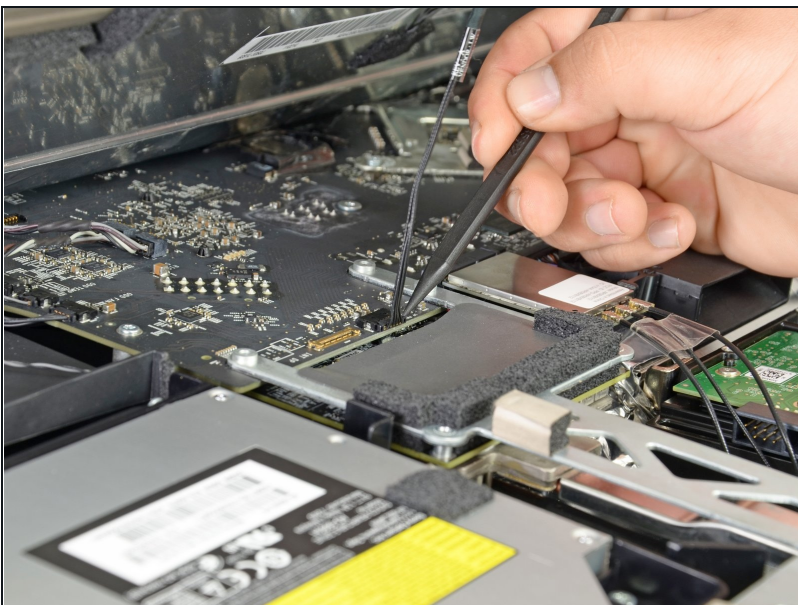


- Pull the black tab straight up to disconnect the latch on the display data cable ZIF connector.

⚠ Do not pull up too hard or you will damage the connector and socket.

- Continue to pull the black tab up toward the top of the device, to detach the display data cable.

Step 8



- Use the tip of a spudger to disconnect the display power cable next to the display data cable.

Step 9



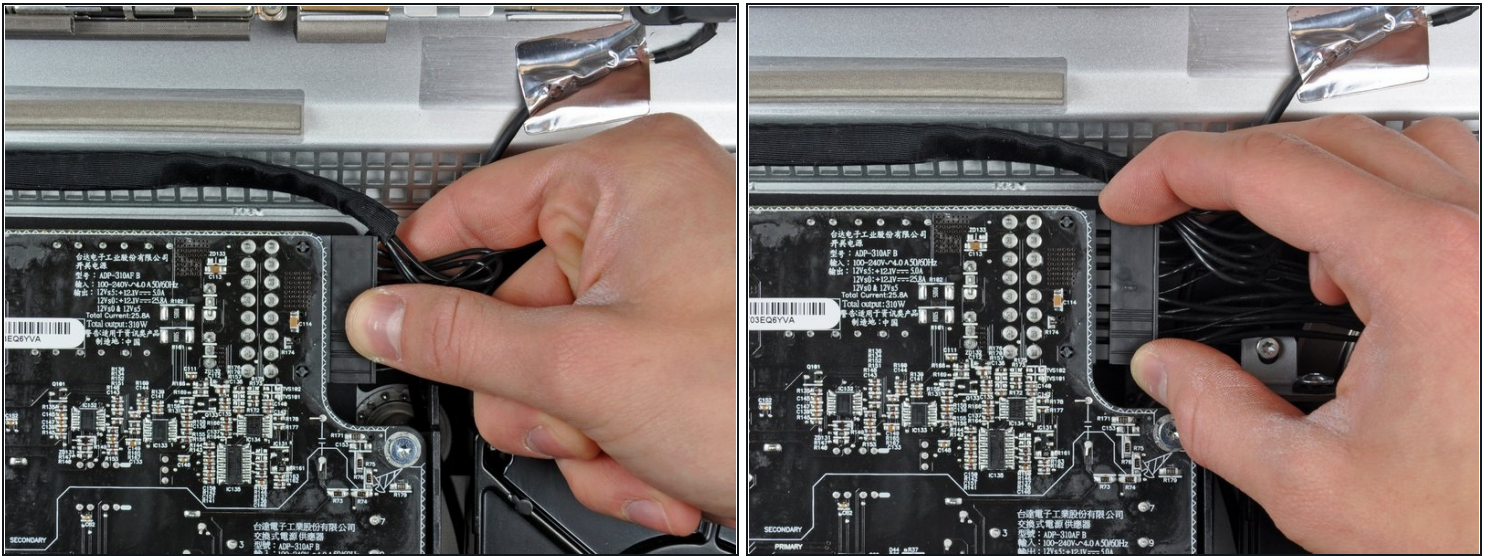
- Carefully pull the display toward the top edge of your iMac and lift it out of the iMac case.

Step 10



- Lay the display face down on a flat, soft surface.
- ❗ If you are replacing the display panel, you will need to transfer additional components from the old panel to the new one. Compare the back of the old display with the replacement display. Note all cables, sensors, and foam cushioning that are missing from the new display.
- If there is a wire or cable underneath adhesive tape, always pull the tape off first. Do not pull on the cable directly.
- If the cable is glued to the chassis, use a heated iOpener or a hair dryer to soften the adhesive first. You can then slide an opening pick underneath the cable to loosen it. Never pull on the delicate connectors.
- Slide an opening pick underneath the foam cushion pieces to separate them from the display, and gently pull them off. You may need some double sided tape to re-attach them to the new display.

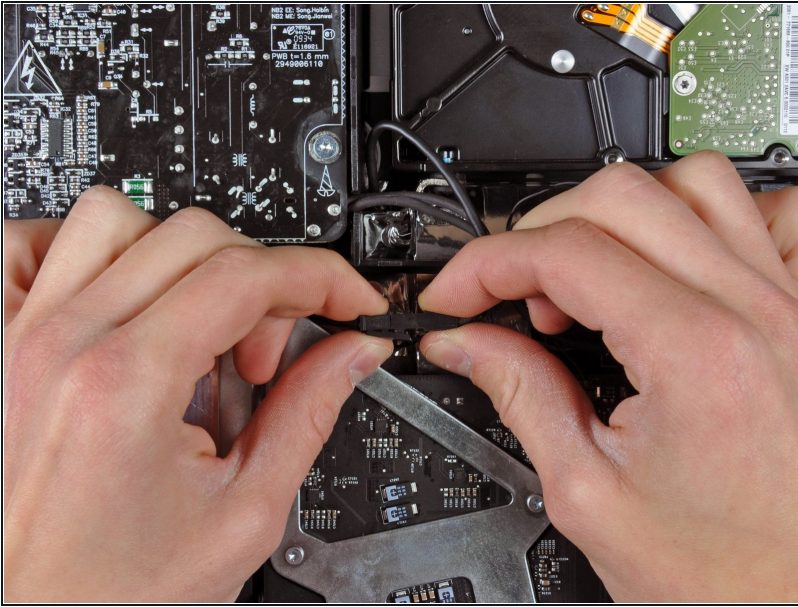
Step 11 — Power Supply



⚠ The next few steps bring your hands close to the exposed face of the power supply. To avoid a high voltage shock from the many large capacitors attached to the board, **do not** touch the face of the power supply.

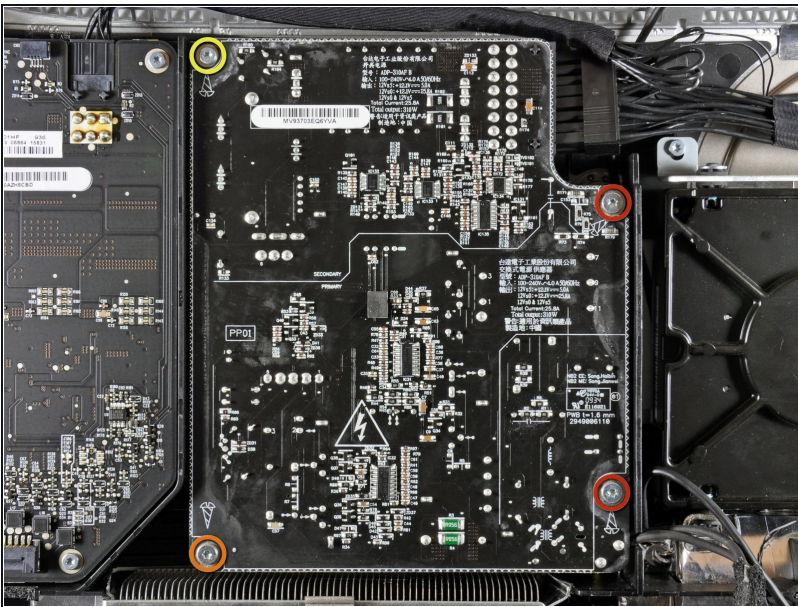
- Disconnect the DC power cable by using your index finger to depress the locking mechanism on the back of the connector while you pull the connector away from its socket on the power supply.
- Once the locking mechanism has cleared the socket, pull the DC power connector away from the power supply.

Step 12



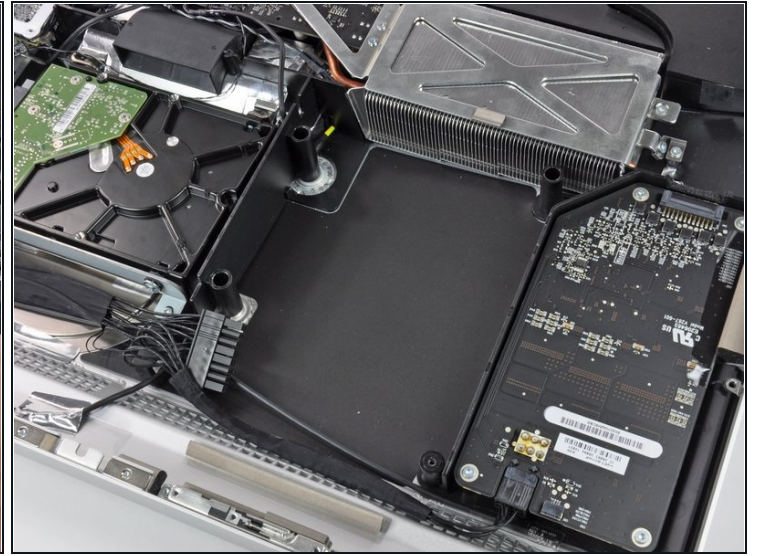
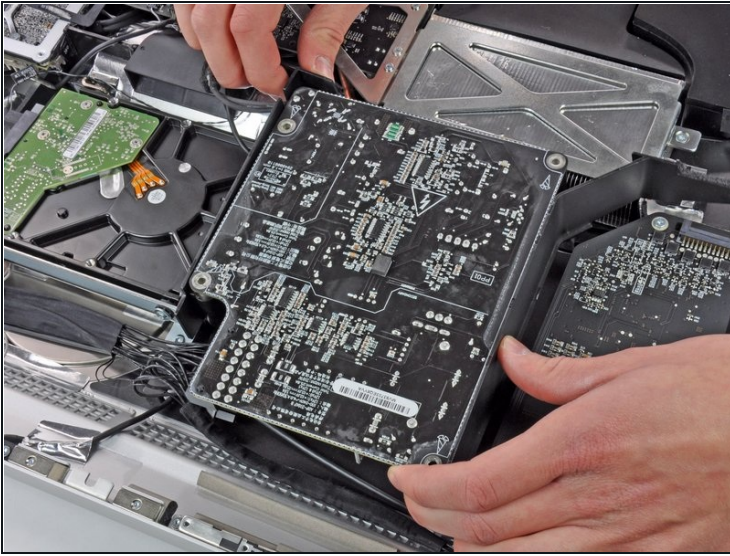
- Disconnect the AC power inlet cable by depressing the locking mechanism while pulling the connector away from its socket.

Step 13



- Remove the following screws securing the power supply to the outer case:
 - Two fine-thread shouldered T10 Torx
 - One coarse-thread shouldered T10 Torx
 - One short coarse-thread T10 Torx

Step 14



- Lift the power supply out of the outer case while gently de-routing it from any wires that may get caught.
 - ① Two plastic brackets may lift out with the power supply. Their correct orientation is shown in the second picture.
-

To reassemble your device, follow these instructions in reverse order.