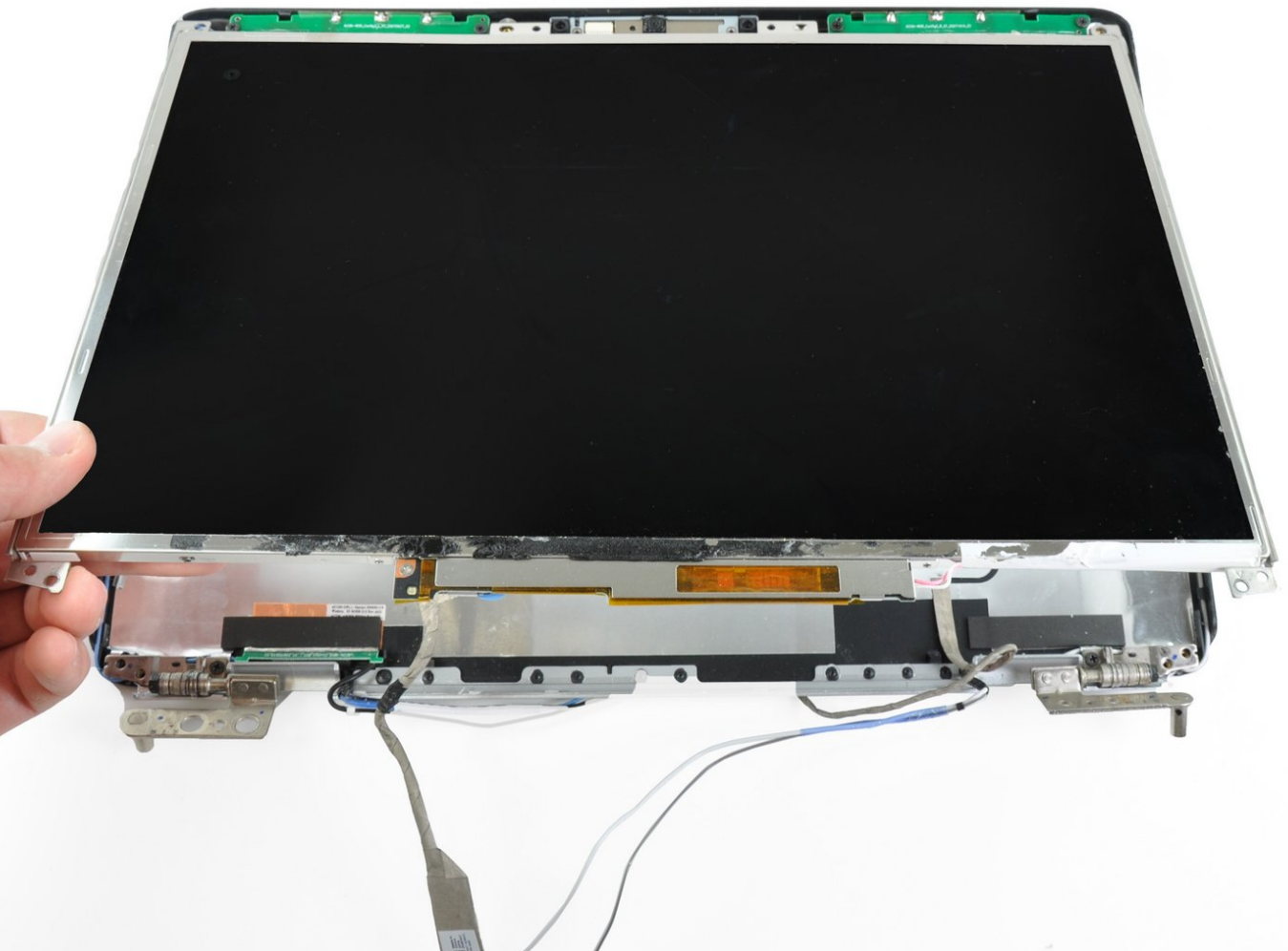




# Dell Inspiron 1525 LCD Replacement

Replace the LCD on a Dell Inspiron 1525.

Written By: Miroslav Djuric



# INTRODUCTION

Use this guide to help you replace the LCD on a Dell Inspiron 1525.



## TOOLS:

- [Phillips #1 Screwdriver](#) (1)
- [Spudger](#) (1)



## PARTS:

- [15.4" PC Laptop LCD CLAA154WP05A](#) (1)

## Step 1 — Battery



- Locate the battery release switch on the bottom of the laptop.

## Step 2



- Slide the battery release switch away from the lock symbol until you hear the battery click.
- Slide the battery towards the back of the laptop until it comes free.

## Step 3 — Central Control Cover



- Remove the two 4.00 mm Phillips #1 screws from the battery tray.

## Step 4



- Insert the flat end of a spudger into the slot on the right side of the central control cover and pry it up.
  - Carefully pull the central control cover up along its edges.
- ⚠ Do not attempt to completely remove the cover, as it is still attached via a ribbon cable.



## Step 5



- Peel back the silver tape securing the ribbon cable to the cover.
- Pull the small brown latch on the ribbon cable connector out.
- Disconnect the ribbon cable to completely free the central control cover.

## Step 6 — Keyboard



- Remove the two 5.75 mm Phillips #1 screws securing the keyboard to the laptop.
  - Gently slide the keyboard towards the display until the tabs on its front side are free.
- ⚠ Do not force the keyboard too far forward or attempt to remove it yet, as there is still a ribbon cable connected to it.

## Step 7



- Use a spudger to gently lift the ribbon cable retaining flap.
- Disconnect the ribbon cable.
- Shift the keyboard sideways enough to free one side from its retaining tab. Then lift the keyboard away from the laptop.



## Step 8 — Bottom Cover



- Remove/loosen the eight 4.80 mm Phillips #1 screws securing the bottom panel.
  - The screws may only need to be loosened, as they are generally retained by plastic washers.
- Remove the bottom panel.

## Step 9 — Display Assembly



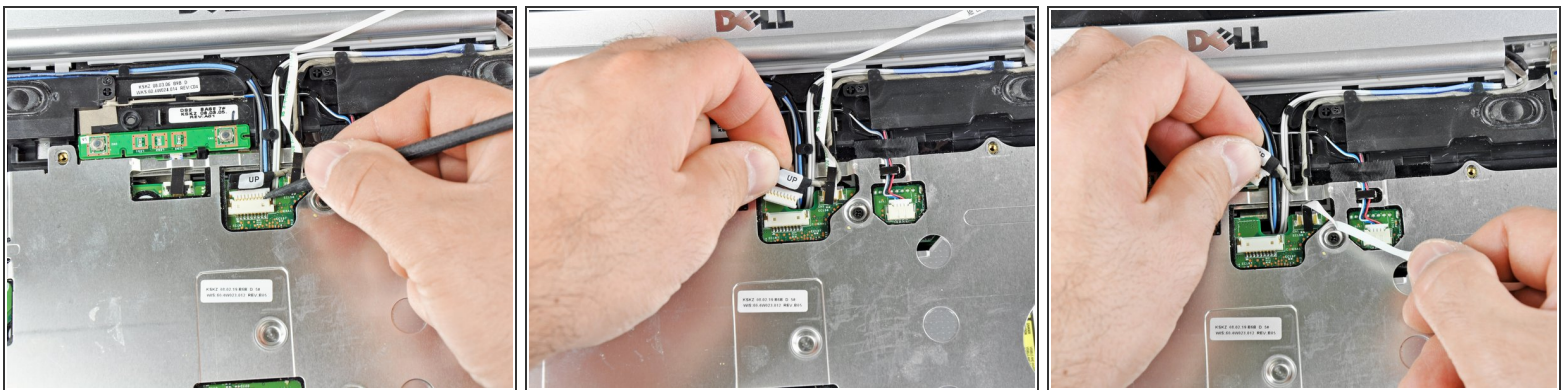
- Disconnect the five antennas from their respective cards.
- De-route the antennas from their routing retainers.

## Step 10



- Remove the two 5.70 mm Phillips #1 screws securing the display assembly to the bottom case half.
- ⓘ The screw holes will be denoted by an embossed "D" by the hole.

## Step 11



- Use the flat end of a spudger to push the camera connector out of its socket. Alternate pushing on either side to evenly remove the connector.
- Carefully release the connector from its retaining tabs.



## Step 12



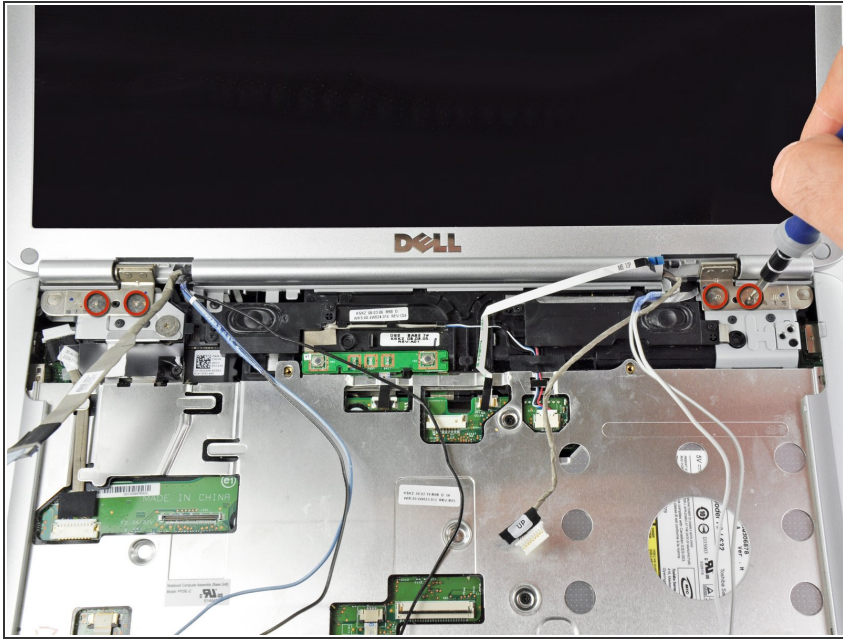
- Push the antenna wires through their hole in the bottom case half.
- Release the antennas from their retaining tabs on the upper case.

## Step 13



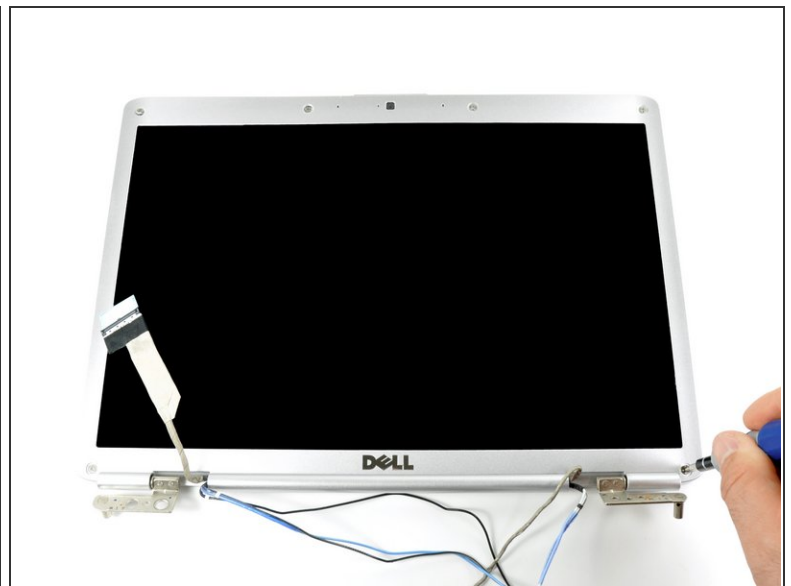
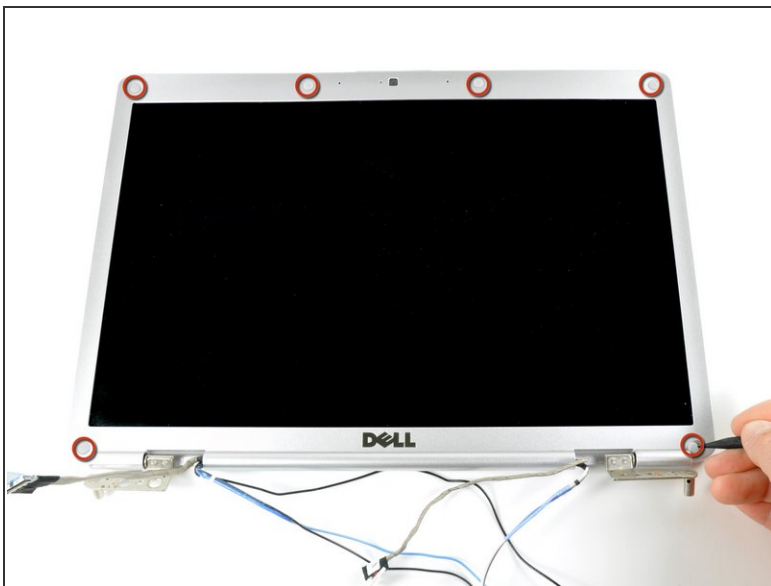
- Disconnect the flat LCD ribbon cable by pulling it up by the tab.
- Free the ribbon cable from its retaining clips.

## Step 14



- Remove the four 3.45 mm Phillips #1 screws securing the display assembly to the laptop chassis.
- ⚠ Support the display assembly as you remove these screws to prevent damage to the screw and hole threads.
- Remove the display assembly from the laptop.

## Step 15 — LCD



- Use the pointed side of a spudger to peel the six small rubber feet off the display assembly.
- Remove the six 6.05 mm Phillips #1 screws hidden beneath each of the rubber feet.
- ⓘ You may need to scrape glue out of the screw heads for the screwdriver to fit properly.



## Step 16



- Use the flat end of a spudger to gently pry the front bezel off the display assembly. Start at a corner and work your way around.
- Remove the front display bezel when it comes free.

## Step 17



- Remove the two 5.70 mm Phillips #1 screws securing the LCD to the display assembly.
- Remove the LCD from the display assembly.

To reassemble your device, follow these instructions in reverse order.