



Acer Aspire 3000 Wireless Card Replacement

This guide will explain how to remove and install a new wireless card.

Written By: Lykia Harper



INTRODUCTION

This step-by- step process demonstrates how to install remove and install a new wireless card on your Acer Aspire 3000. It is important to follow the steps carefully in order to prevent damage to the cables upon removal. Damage to the cables may cause a bad connection with the replacement wireless card. Use caution to always remove the battery whenever you are repairing parts of your device.



TOOLS:

- [Heavy-Duty Spudger](#) (1)
 - [J1 Screwdriver Bit](#) (1)
 - [64 Bit Driver Kit](#) (1)
-

Step 1 — Battery



- Begin with the device face down.
- Orient the laptop so that the battery is on the side opposite of you and the headphone ports are facing towards you.

Step 2



- Slide the button found below the battery to the left into the unlocked position.
- ⓘ You will know the battery is unlocked if the tab is pushed to the side where the symbol is unlocked.

Step 3



- Locate the battery and the tab to the right of it.
 - Pull the tab to the right while simultaneously pushing the battery away from you.
- ⚠ Make sure you push the battery only when tab is held in the right position in order to avoid damage to the device.

Step 4 — Wireless Card



- Remove the two 4.6 mm Phillips #1 screws on the lower edge of the laptop case.

Step 5



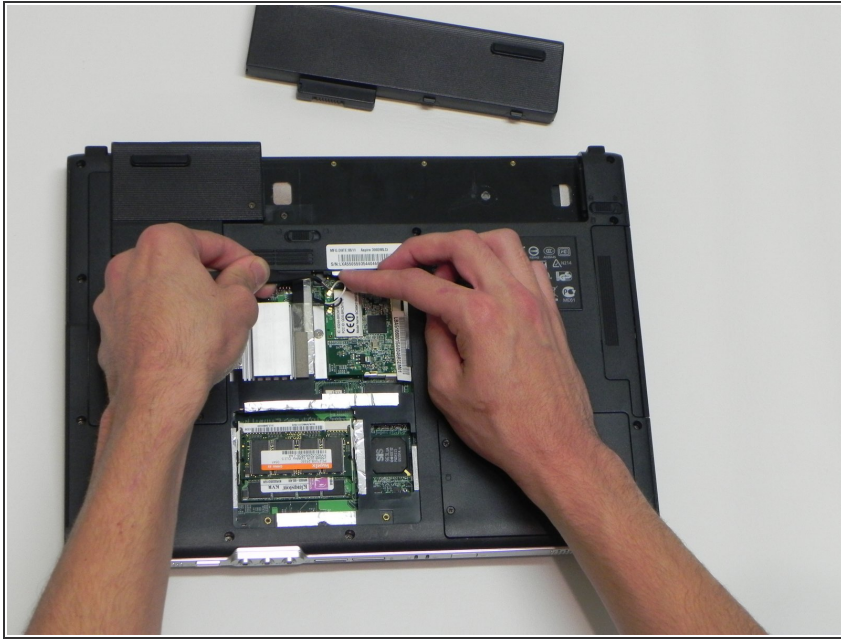
- Pop the three side tabs out of the back case.

Step 6




- Remove the panel that covers the graphics card.

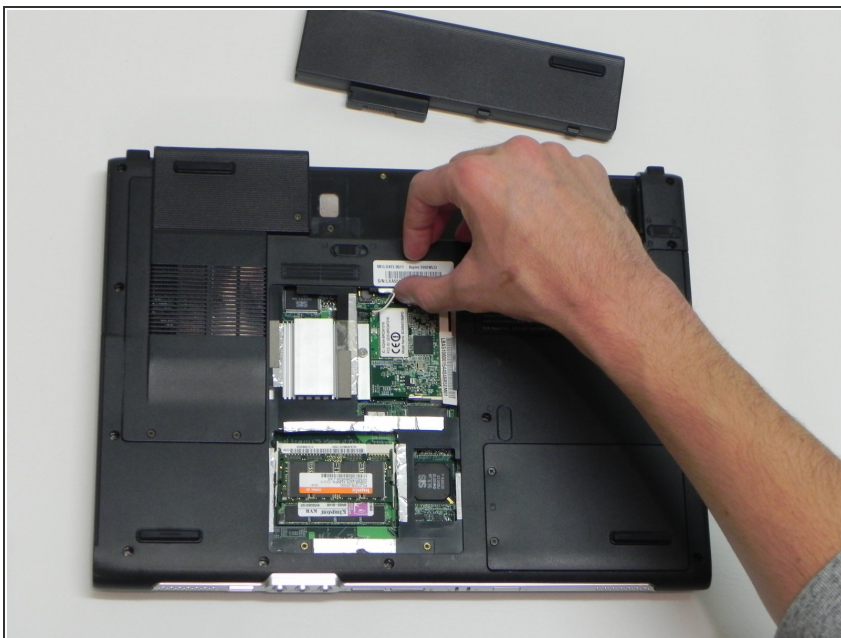
Step 7




- Remove the black and white cables attached to the graphics card.

 Be careful to lift vertically as to not mess up either part of the connectors.

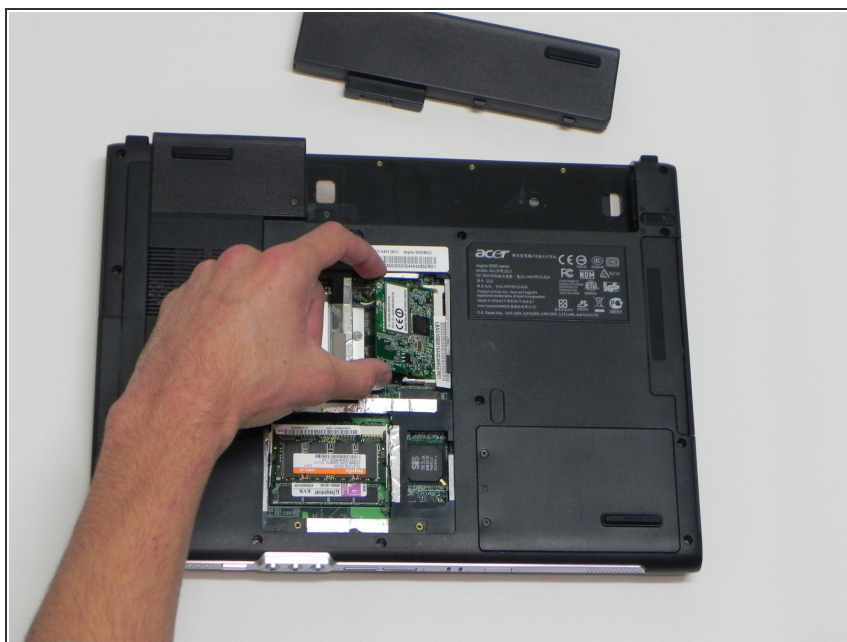
Step 8



- Push the white flanges on either side of the graphics card out.

 The card should lift on its own slightly out of the case.

Step 9



- Remove the card by lifting up and away from the edge that has all of the contacts on it.

To reassemble your device, follow these instructions in reverse order.