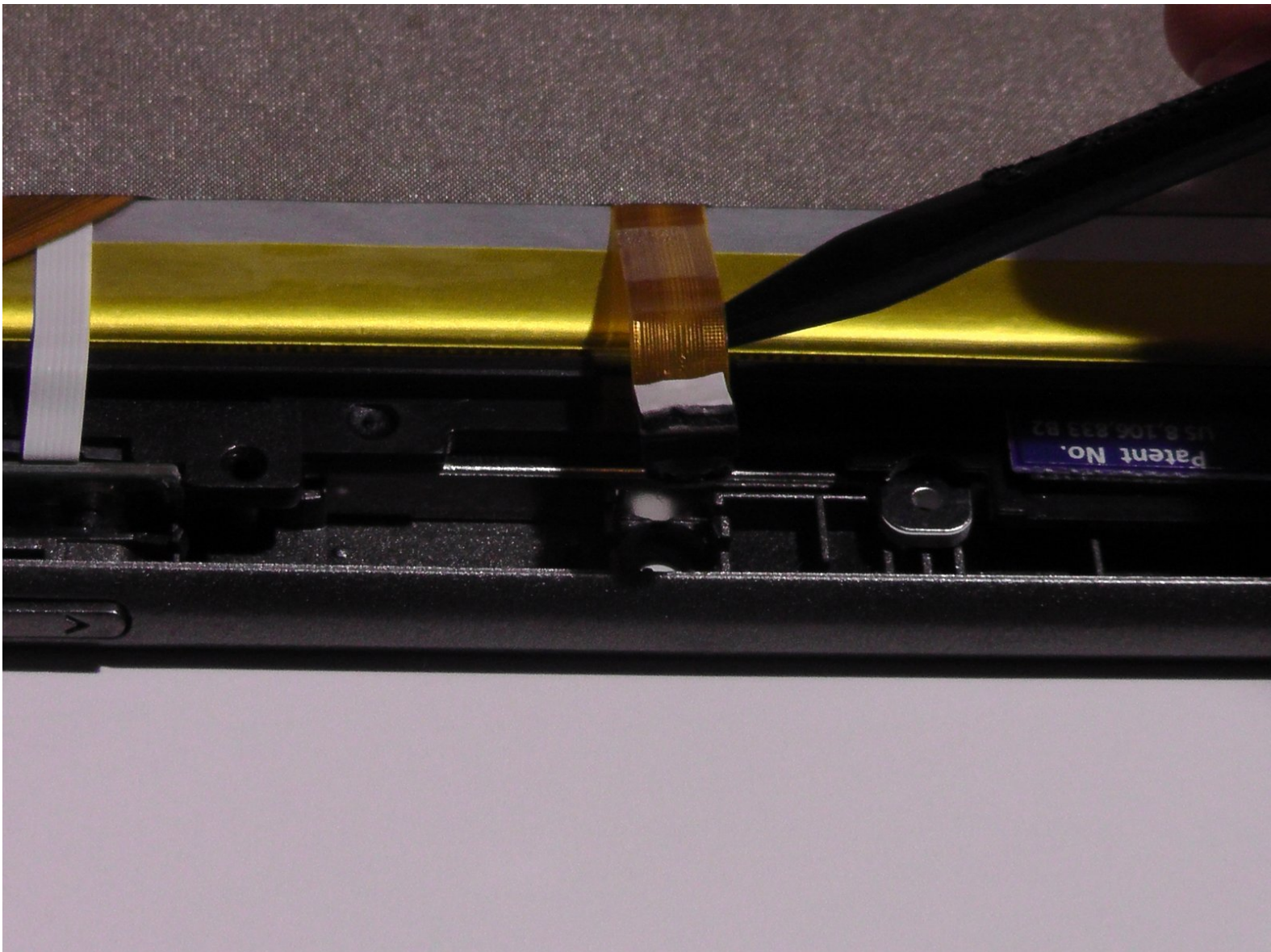




Neo3Do Front and Back Camera Replacement

Use the steps given in this guide to remove and replace the Neo3DO front and back camera.

Written By: Daniel Evans





TOOLS:

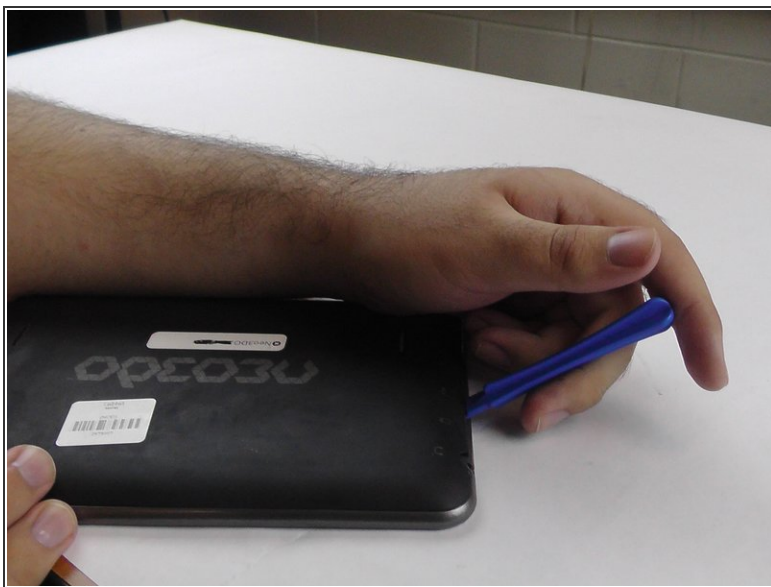
- [iFixit Opening Tools](#) (1)
 - [Precision Tweezers Set](#) (1)
 - [Spudger](#) (1)
-

Step 1 — Back Panel



- Turn the Neo3DO face down so that the logo is facing toward you.
- Insert the plastic opening tool between the metal frame and the plastic back panel, as shown.

Step 2



- Gently pry the back panel upwards.
- ⚠ Ensure the tool does not slip into the device and damage the internals.

Step 3



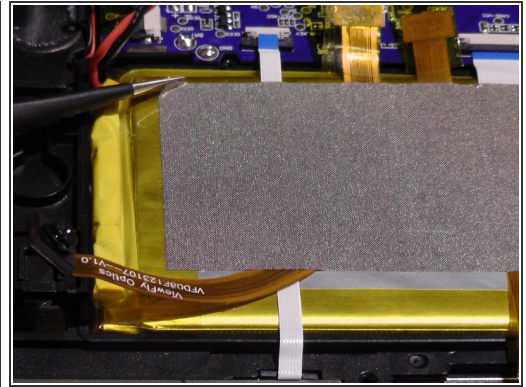
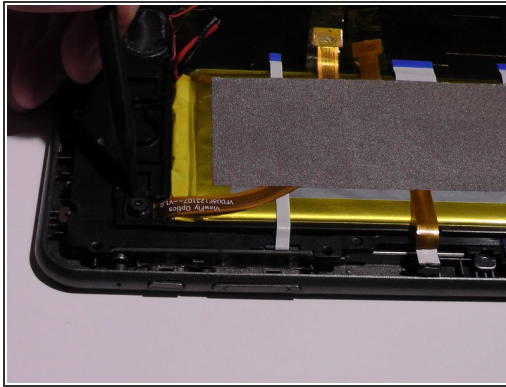
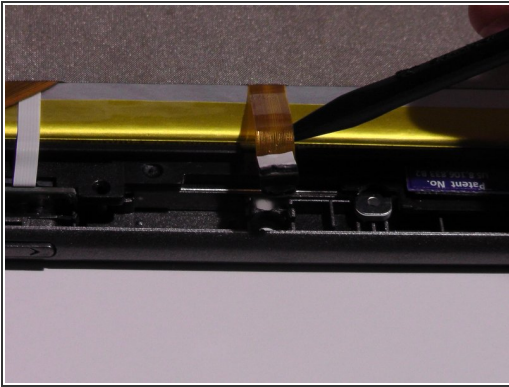
- Once the back panel has been pried away from the bottom and sides of the Neo3DO, lift the back panel up and away from the tablet.

Step 4



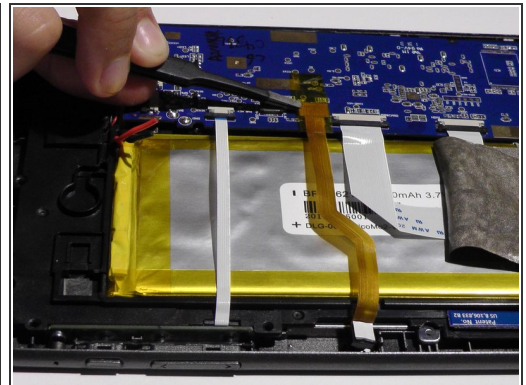
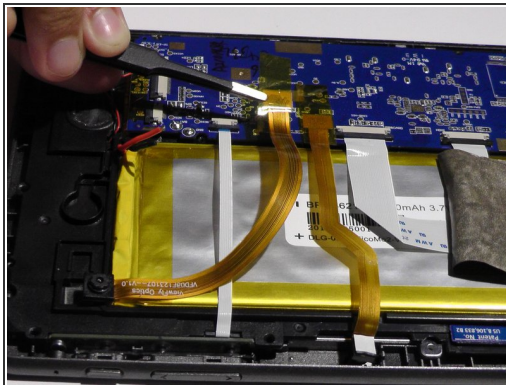
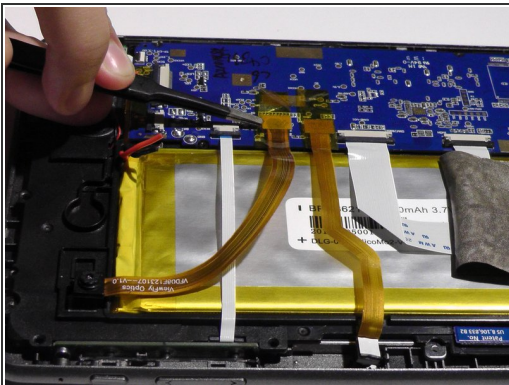
- When replacing the back panel, place the top edge of the back panel against the top edge of the Neo3DO, as shown.
- ⓘ The top edge of the device is the edge closest to the camera. The top of the back panel is the side with the hole for the camera.

Step 5 — Front and Back Camera



- Remove the front and back camera from their sockets.
- Remove the silver tape from the battery.

Step 6



- Remove the ribbon wire from the socket.

⚠ Gripping the wire belt and pulling upwards may cause damage, be sure to avoid it.

To reassemble your device, follow these instructions in reverse order.