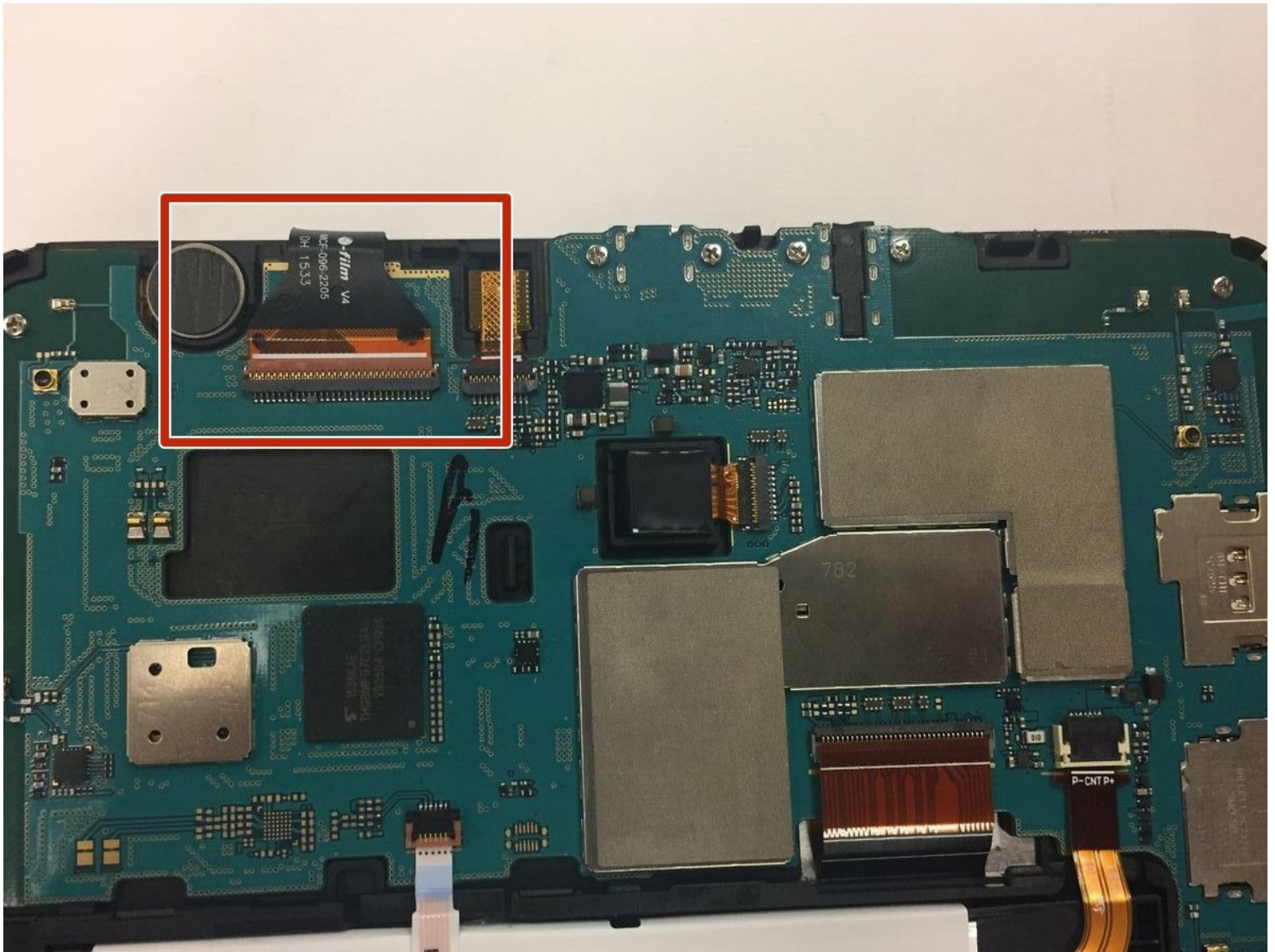




Samsung Galaxy Tab E 9.6 Verizon Front Panel Replacement

Front panel removal for the Samsung Galaxy Tab...

Written By: Dave Dorzback



INTRODUCTION

Front panel removal for the Samsung Galaxy Tab E Verizon.



TOOLS:

[iFixit Opening Tool](#) (1)

[Suction Handle](#) (1)

[Tweezers](#) (1)

Step 1 — Back Casing

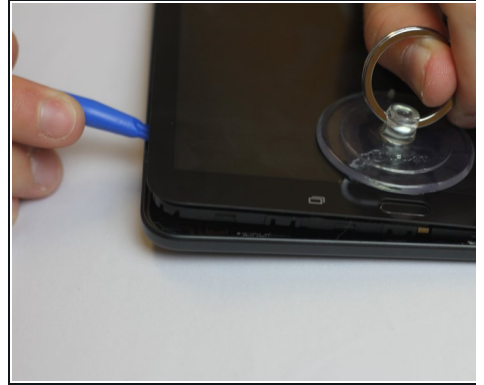
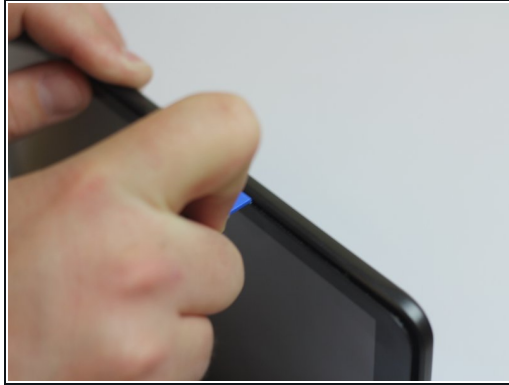
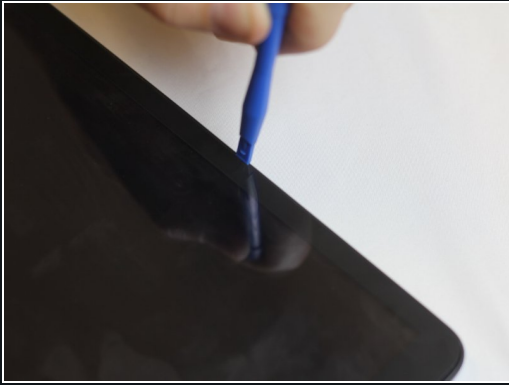


⚠ Remove any micro-SD or SIM cards before continuing.

⚠ Verify your device is turned OFF.

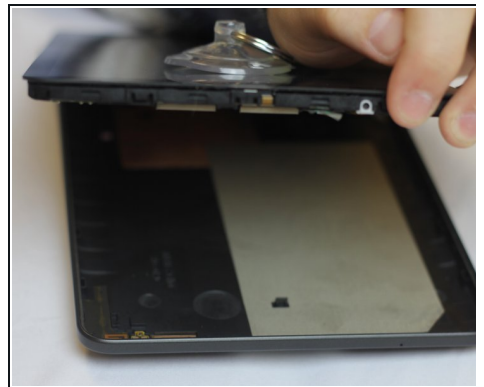
⚠ Disconnect all external devices from your tablet.

Step 2



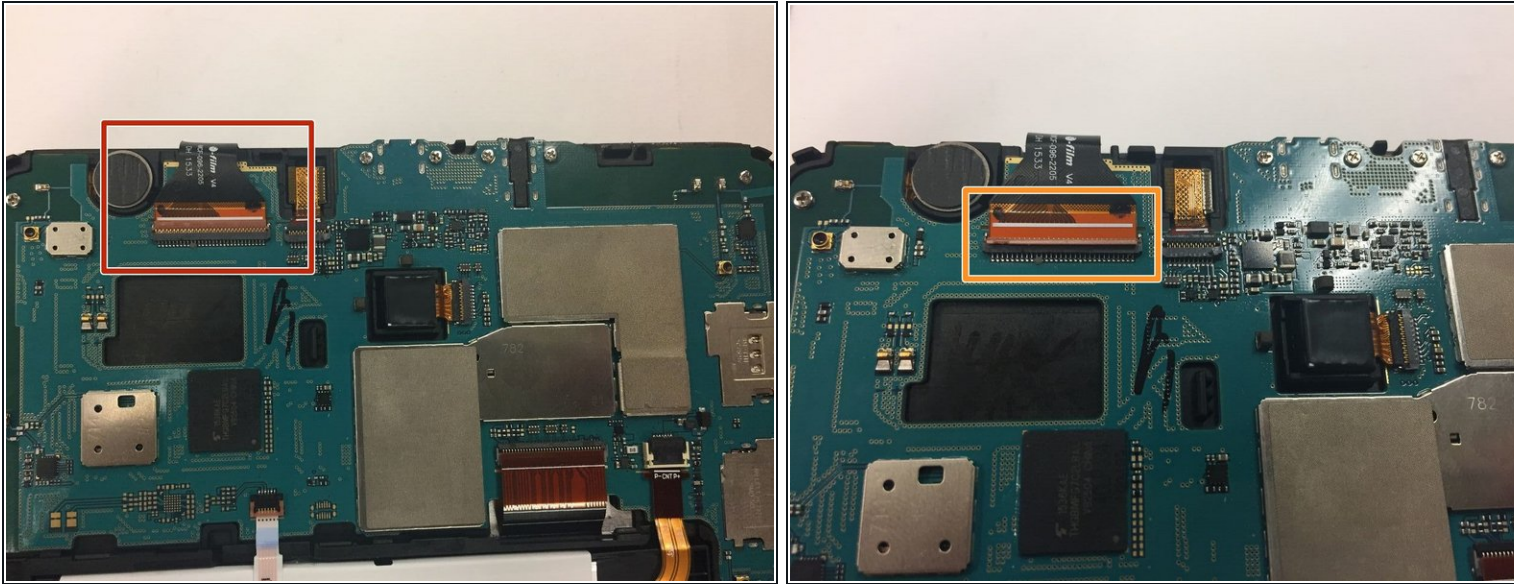
- Insert the plastic opening tool by wedging it between the device's screen and back cover.
 - Move the plastic tool around the edges of the device to undo the plastic lips holding the casing together.
- i** This step may require more force than expected. If difficult, try using a suction cup on the screen.

Step 3



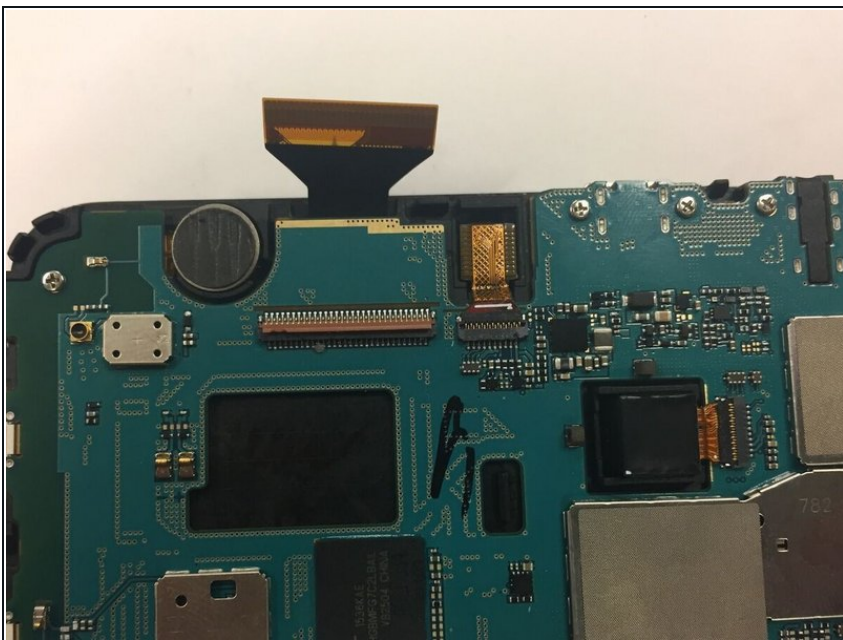
- This process will become easier as more clips are separated.
 - Use your hands to gently pull the back cover off the device after about half of the clips are separated.
- ★** A suction cup can be used in this step as well to assist in pulling the device apart.

Step 4 — Front Panel



- Turn the device over so the screen is facing down. Locate the front panel assembly connector at the top left corner of the motherboard.
- To remove the connector, first use a pair of tweezers and flip the connector lock upwards towards the battery.

Step 5



- Once you've undone the connector lock, use a pair of tweezers to pull the cable front its housing.

Step 6



- Turn the device back over and use a plastic opening tool to detach the adhesive glue securing the front casing.
- You will need to wedge a plastic opening tool in between the front casing and the screen. Then move the tool around the perimeter of the device to break the adhesive.
- Once you've loosed the front panel enough with the prying tool, you can use your hands to pull the front panel off of the device.

To reassemble your device, follow these instructions in reverse order.