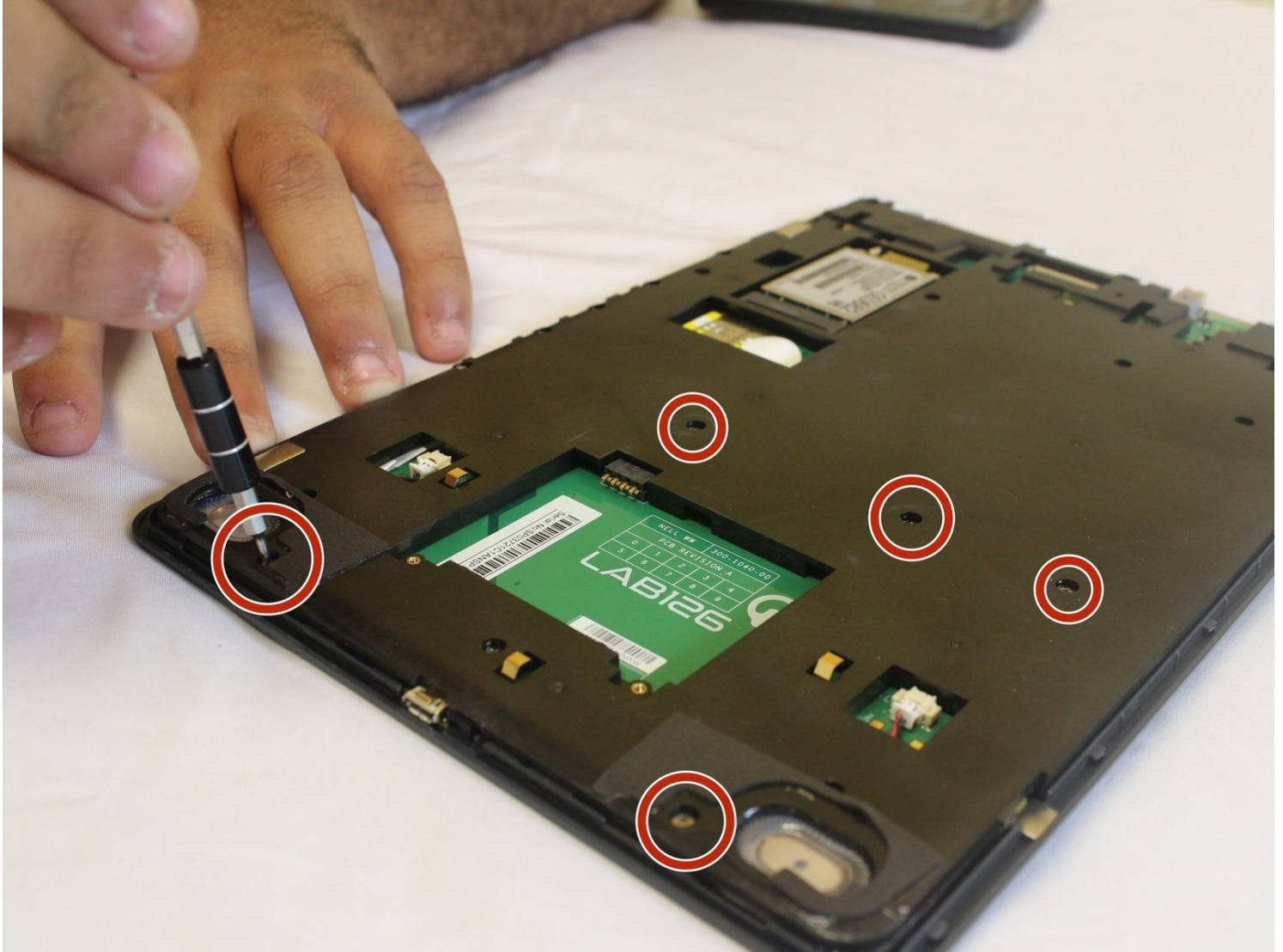




Amazon Kindle DX Previous Page Key Replacement

This guide shows you how to replace keyboard...

Written By: Lori White



INTRODUCTION

This guide shows you how to replace keyboard keys on an Amazon Kindle DX and uses the “previous page” key as an example. The “previous page” key has the less than symbol (<) on it and is located on the right side of the Amazon Kindle DX.

Prior to using this guide, test the keys to confirm that the [keyboard is not working properly](#). To determine whether a key is faulty, press on the key to see if it performs the correct function. If not, the key is faulty. For example, when you press down on the “previous page” key of your Amazon Kindle DX and it doesn’t bring you to the previous page, the key is faulty.

This guide requires you to use the Phillips screwdriver, sizes PH0, PH00, and PH000, as well as a precision tweezer and opening tool. You must purchase a replacement key for the faulty key you are attempting to replace.

Before you begin, turn the Kindle off and unplug it from any external power source.



TOOLS:

[iFixit Opening Tool](#) (1)
[Phillips #00 Screwdriver](#) (1)
[ESD Safe Blunt Nose Tweezers](#) (1)



PARTS:

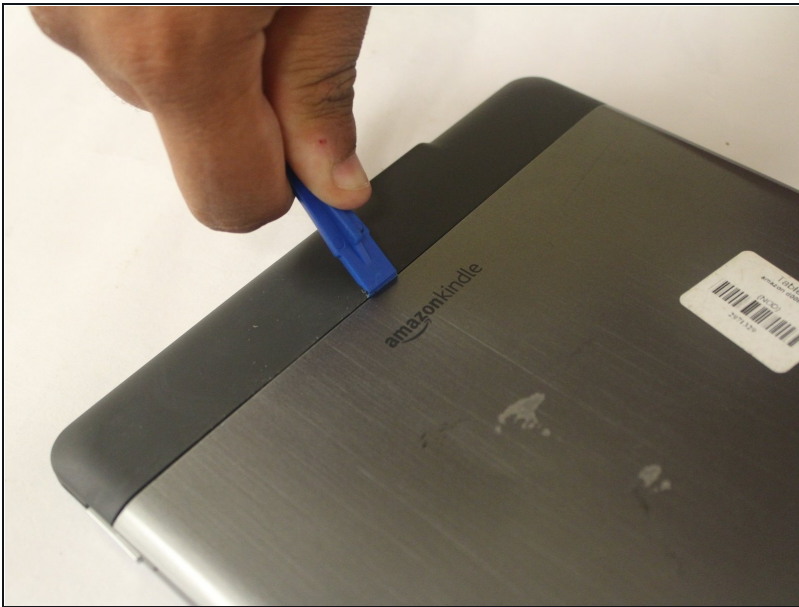
[170-1012-00](#) (1)

Step 1 — Battery



- Flip the Kindle so the back is facing upwards.

Step 2



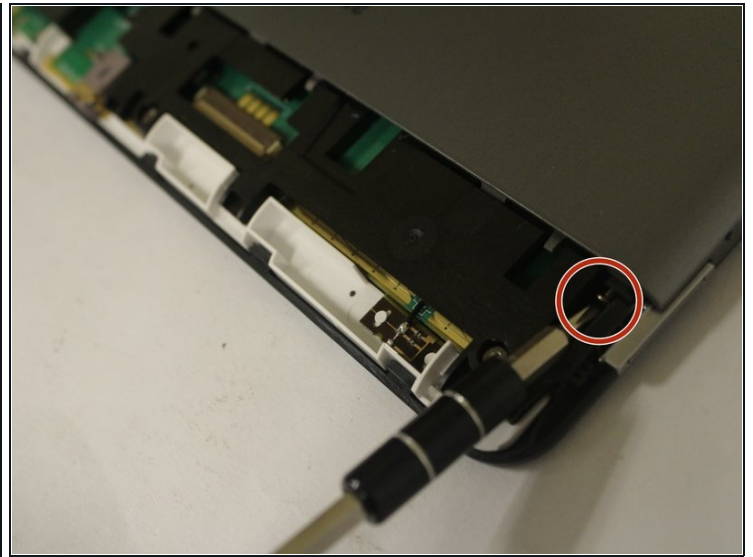
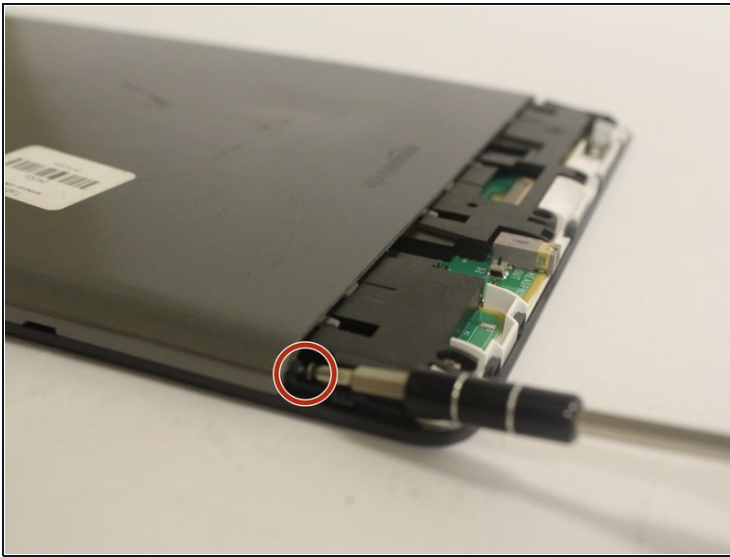
- Push an opening tool against the bottom cover edge of the device. Move the tool's edge around the bottom plastic piece to pop it open.

Step 3



- Remove the plastic piece.

Step 4



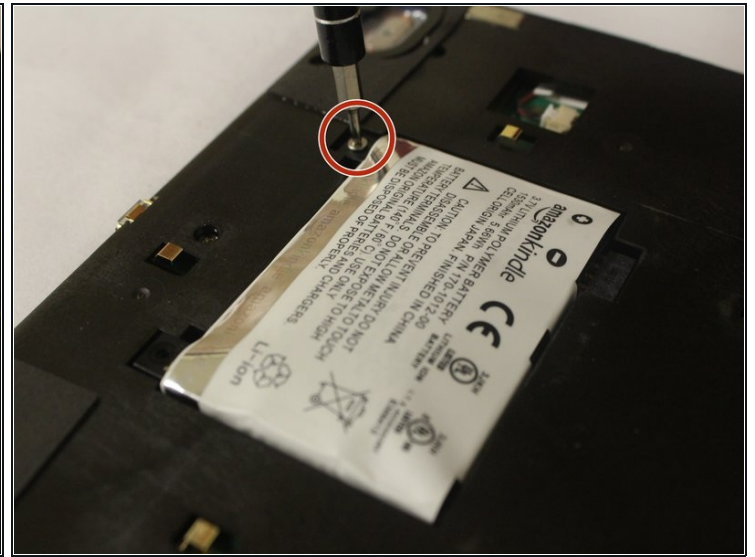
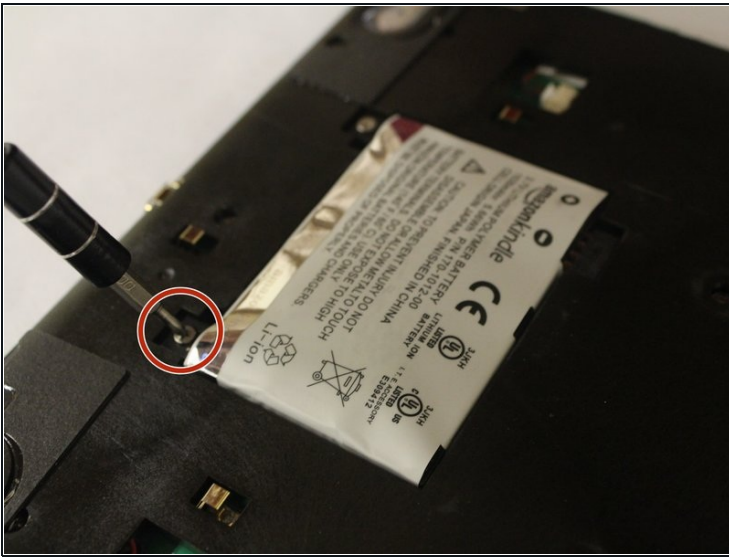
- Remove two 40 mm screws (one on each corner) using a Phillips #00 screwdriver.

Step 5



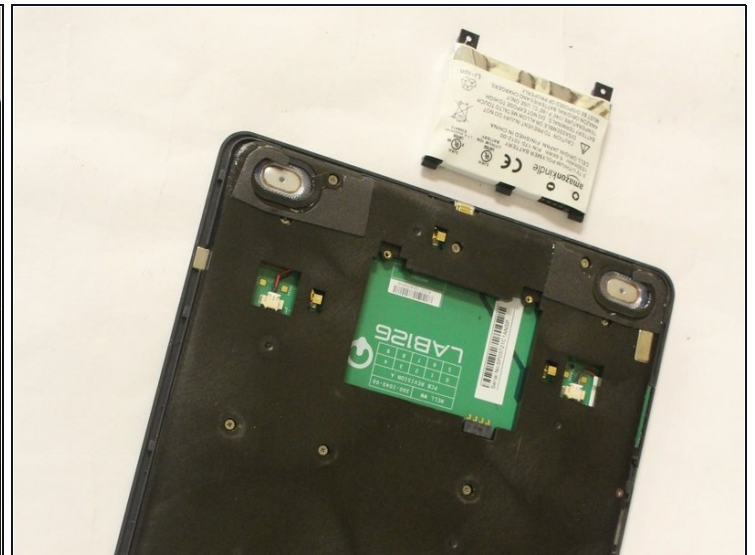
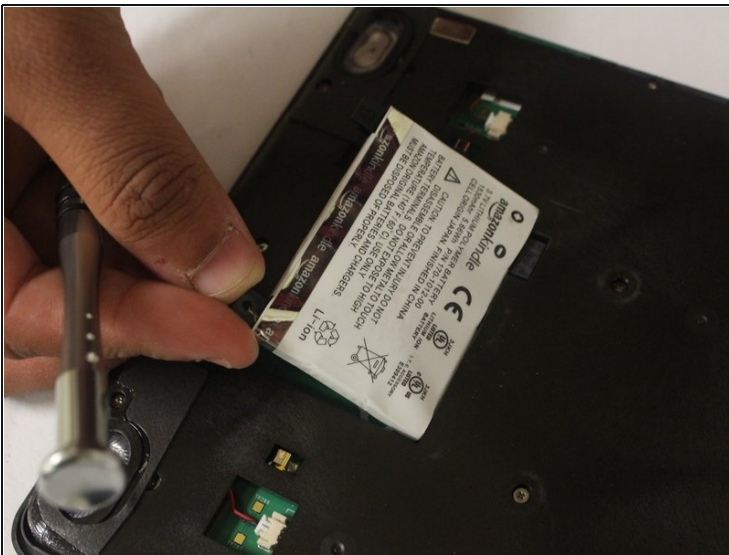
- Use the edges of the opening tool, get in between the seams of the front and back panel, and use the tool to separate the pieces. Once loose, lift back panel off of the device.

Step 6



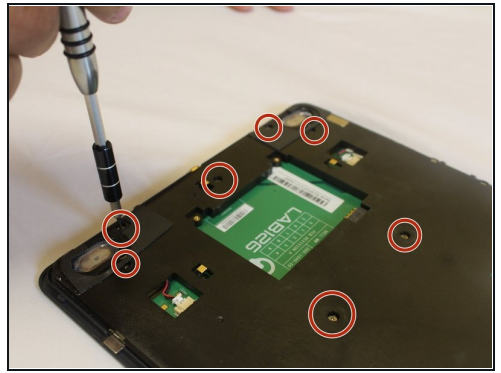
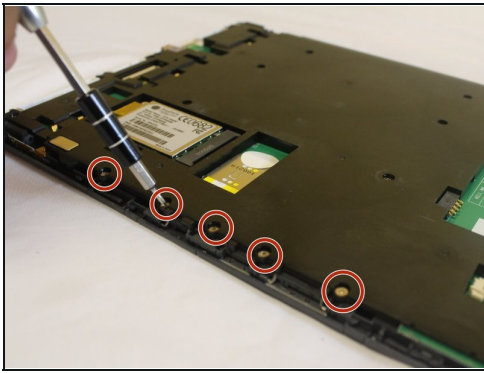
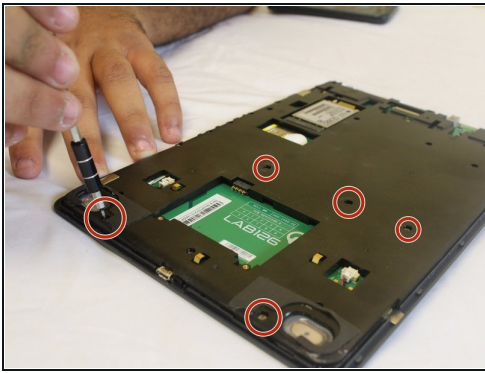
- Remove two 30 mm screws securing the battery with a Phillips #00 screwdriver.

Step 7



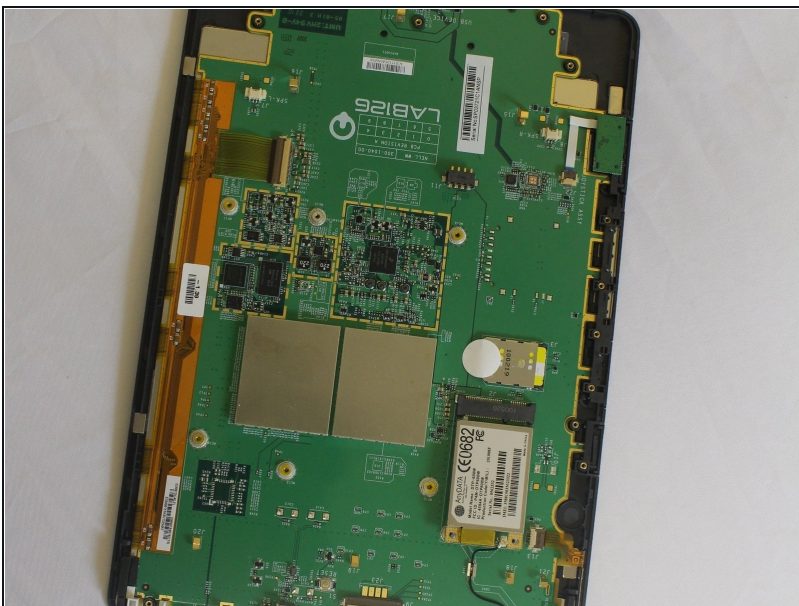
- Remove the battery from the device.

Step 8 — Previous Page Key



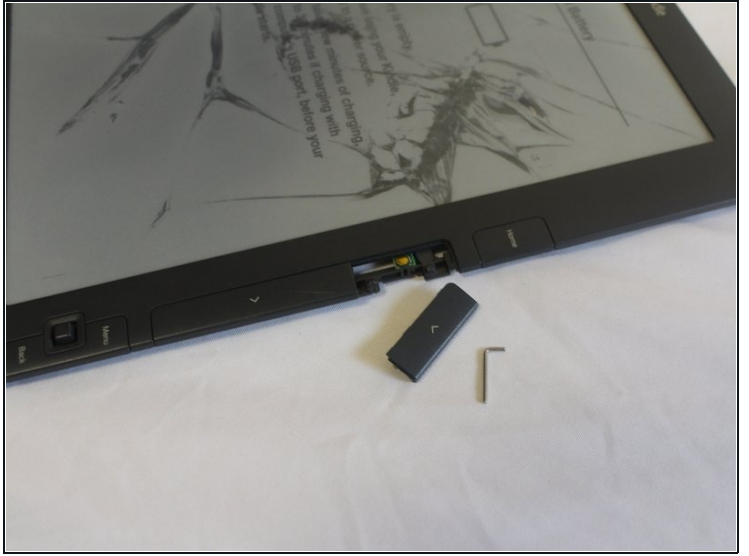
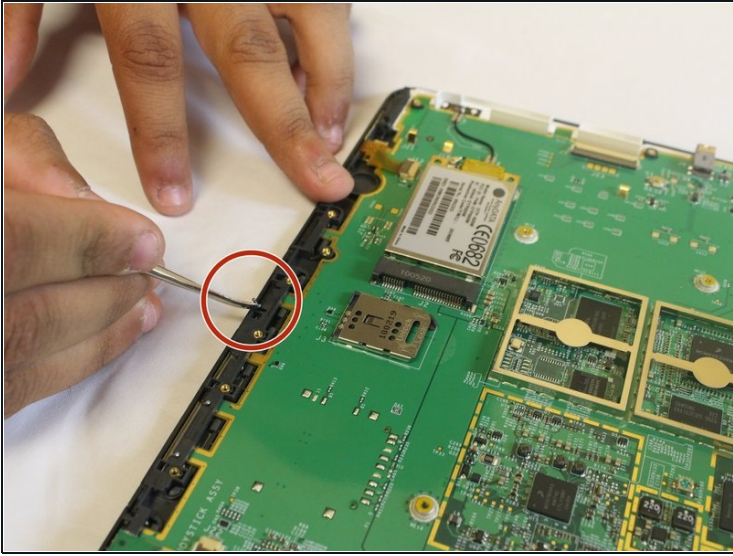
- Remove five 30 mm screws from the midframe using a Phillips #000 screwdriver.

Step 9



- Remove the midframe to reveal the motherboard.

Step 10



- Remove the "previous page" button from the side function keys using a pair of tweezers.

To reassemble your device, follow these instructions in reverse order.