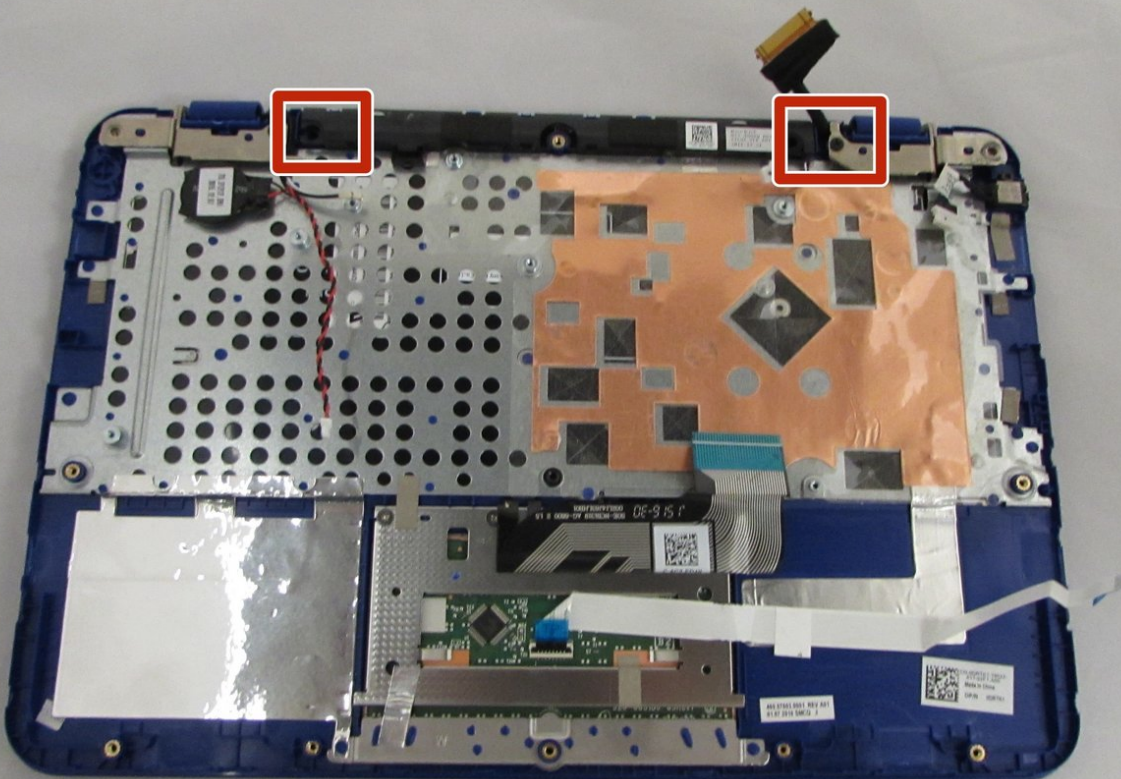




Dell Inspiron 11-3162 LCD Screen Replacement

This guide will teach you how to replace the LCD screen on a Dell Inspiron 11-3162

Written By: Jared Johnson



INTRODUCTION

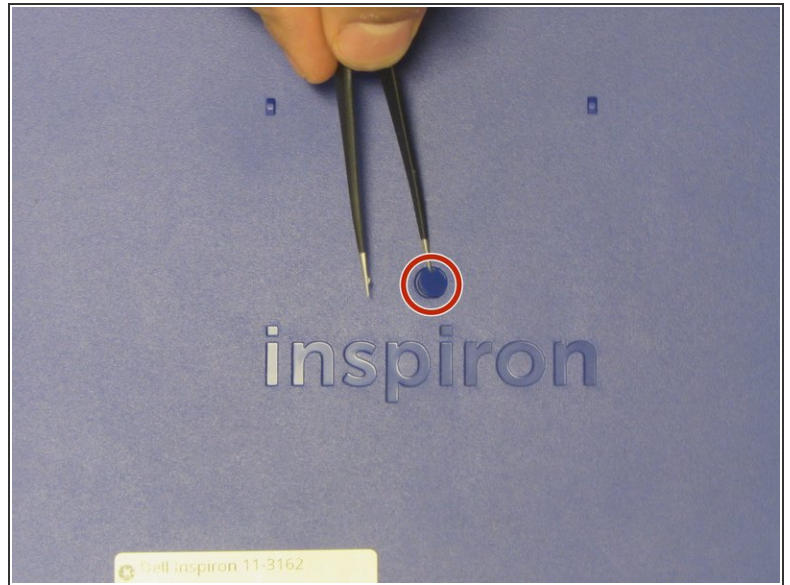
This guide will tell you how to replace your LCD screen. When working with screens, be careful about electrical discharges, and take steps to assure that the battery is disconnected for awhile before you follow this guide.



TOOLS:

- [Phillips PH000 Screwdriver](#) (1)
 - [Tweezers](#) (1)
 - [Heavy-Duty Spudger](#) (1)
 - [phillips Screwdriver PH00](#) (1)
-

Step 1 — Back Cover Removal



i Before you begin, be sure to turn off your laptop and unplug it from the outlet.

- Use tweezers to pry and remove the center screw cover on the back cover.

Step 2



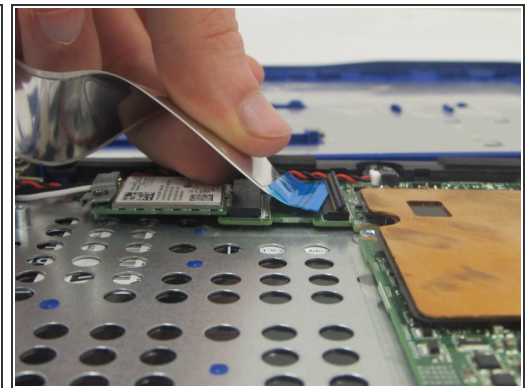
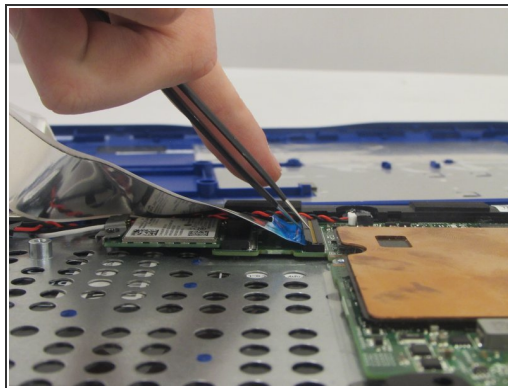
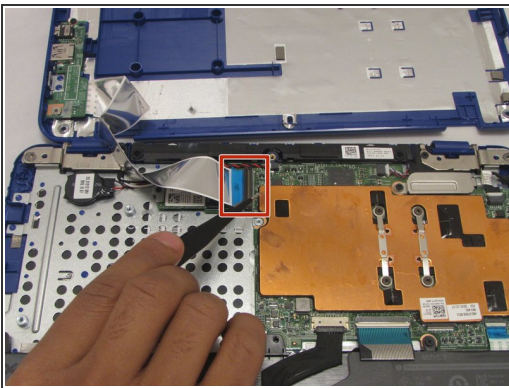
- Use a Phillips screwdriver to unscrew the nine 6.8 mm screws securing the back cover.

Step 3



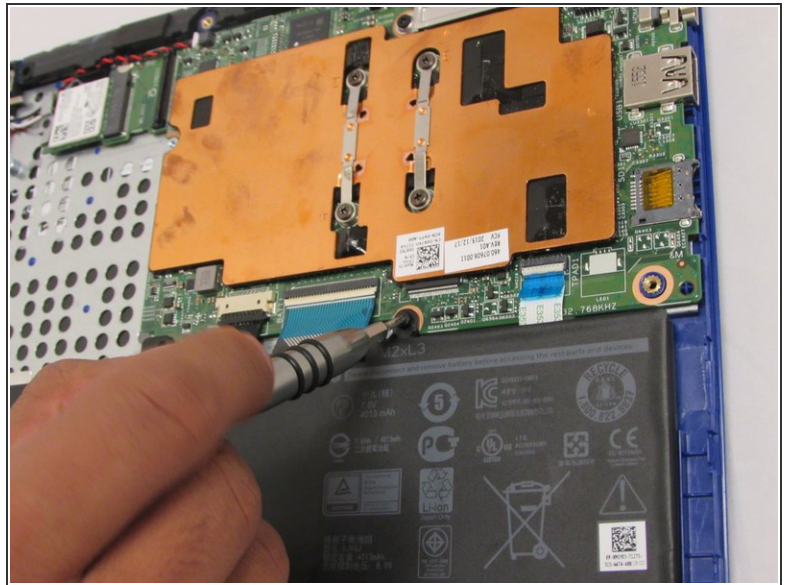
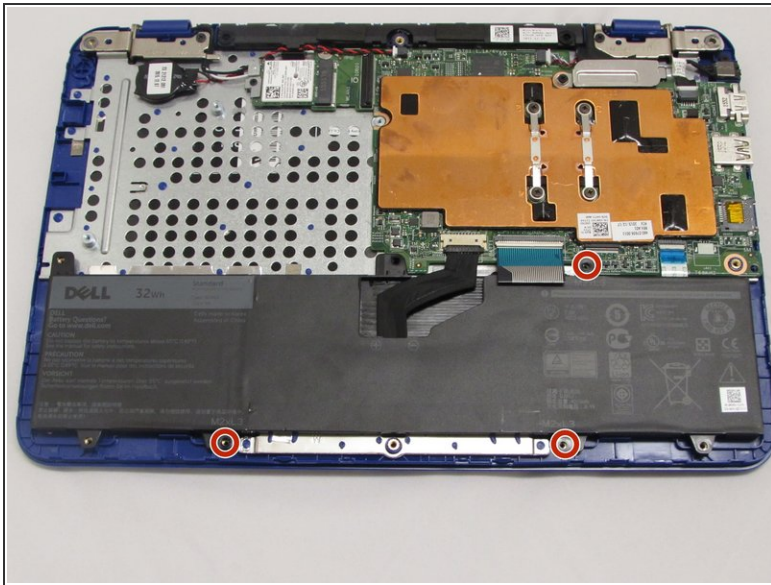
- Use a spudger to pry around the base edges of the back cover to loosen it from the laptop.
- ⚠ Do not fully remove the cover, as it is still attached to the laptop with cables.

Step 4



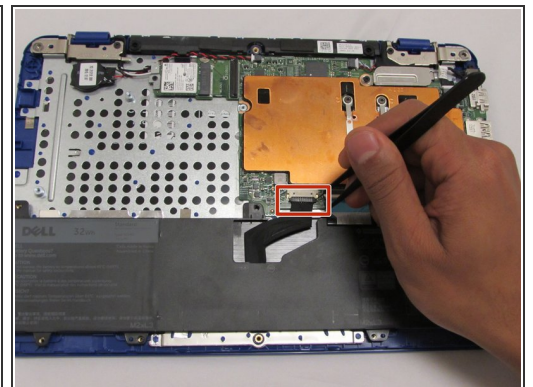
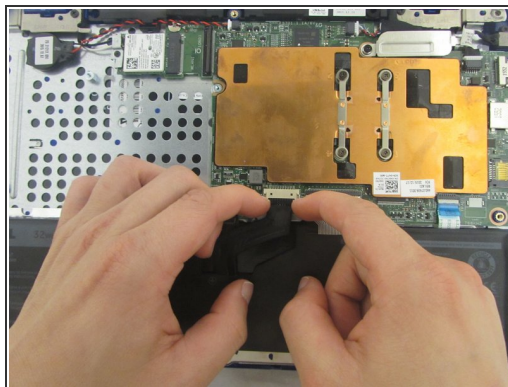
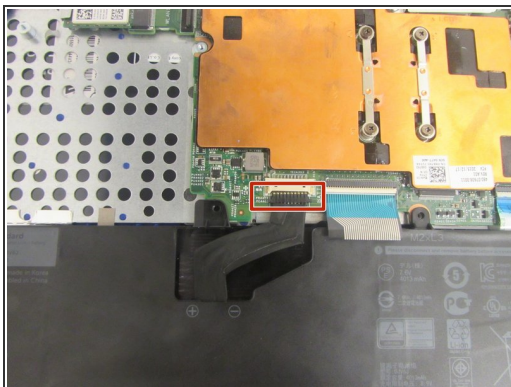
- ⓘ If you are only replacing the battery, you can skip this step. Be careful not to strain the still-connected cable as you work.
- Unlock the wide ZIF connector securing the flex cable.
- ⓘ To unlock a [ZIF connector](#), use the tip of a spudger or your fingernail to flip up the small, hinged locking flap.
- Pull the ribbon cable outwards to disconnect the back cover from the motherboard.

Step 5 — Battery



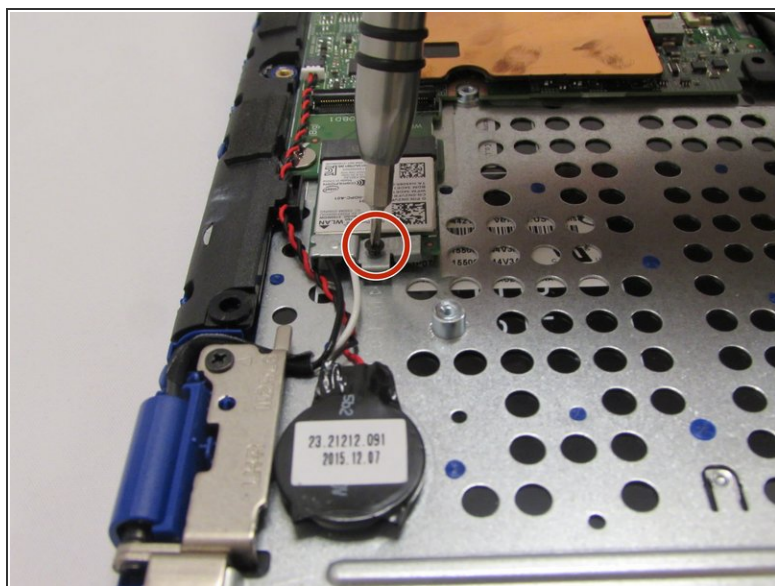
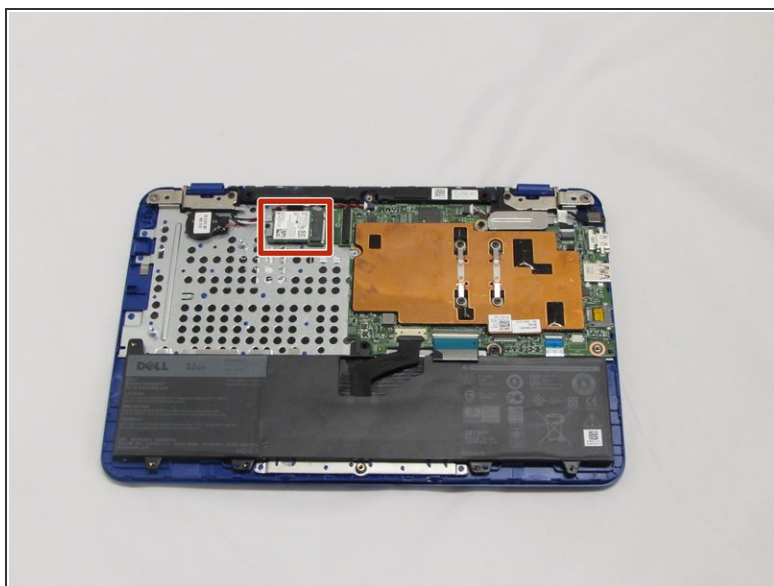
- Use a Phillips screwdriver to unscrew the three 4 mm screws securing the battery.

Step 6



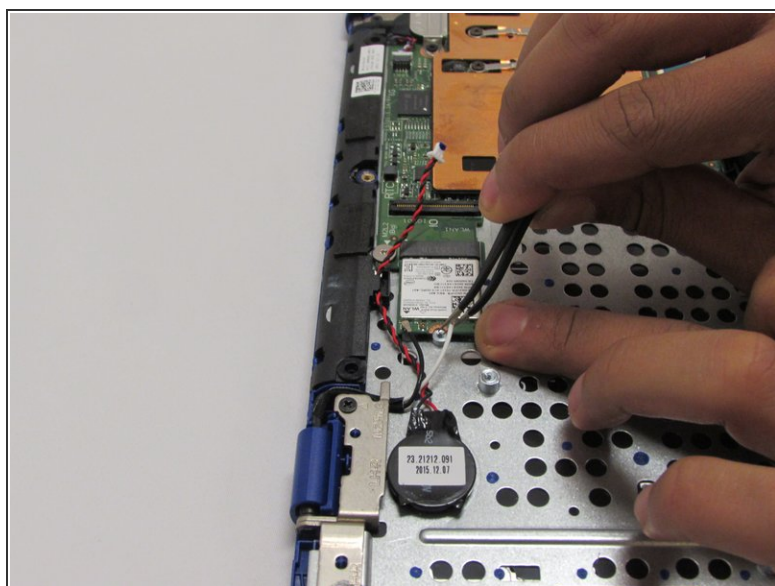
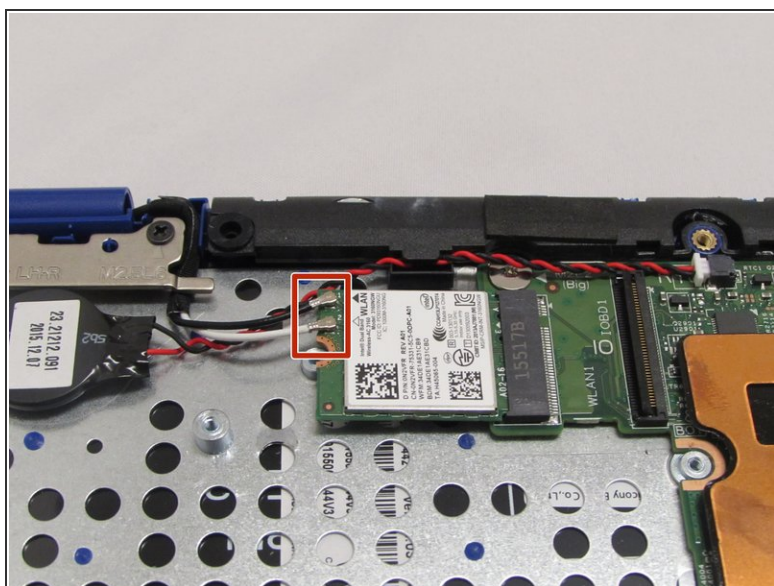
- Use your fingers (or a set of tweezers) to disconnect the battery cable from the motherboard by gently pulling it towards the battery.
 - ⚠ Pull parallel to the battery, not straight up.
- Lift and remove the battery from its recess.

Step 7 — Wireless WLAN Card



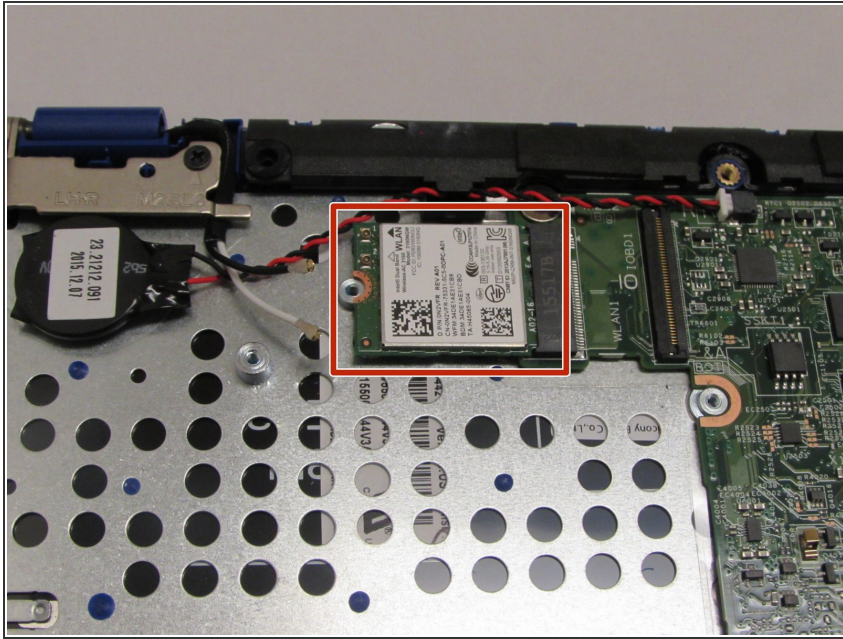
- Use the Phillips screwdriver with the PH000 head to unscrew the 3.8mm screw.

Step 8



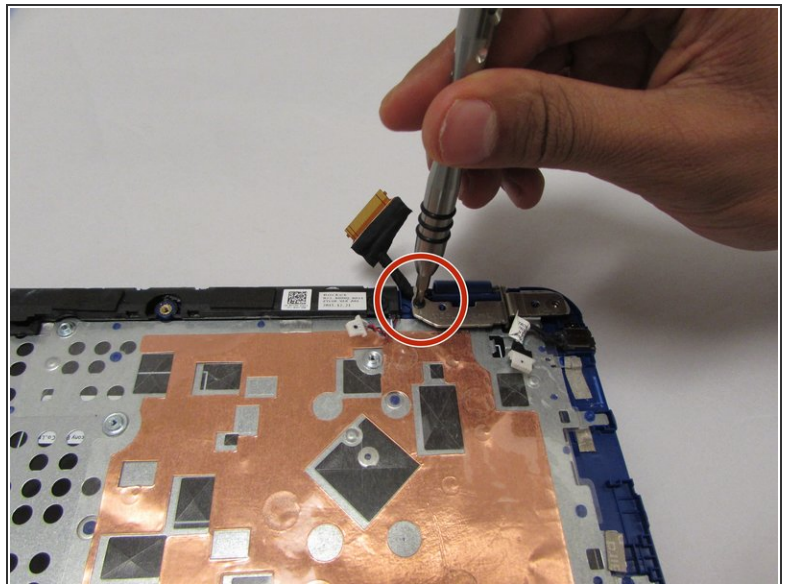
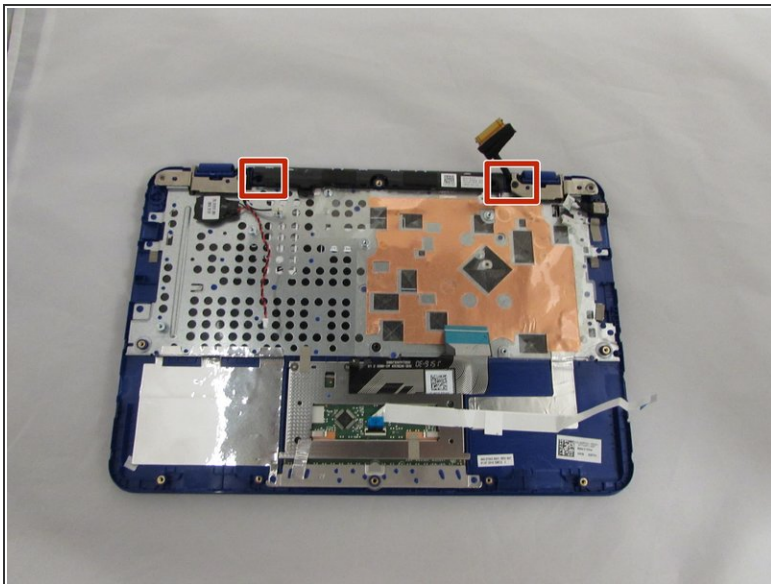
- Using the tweezers, pull the white and black wires off of the WiFi Chip.

Step 9



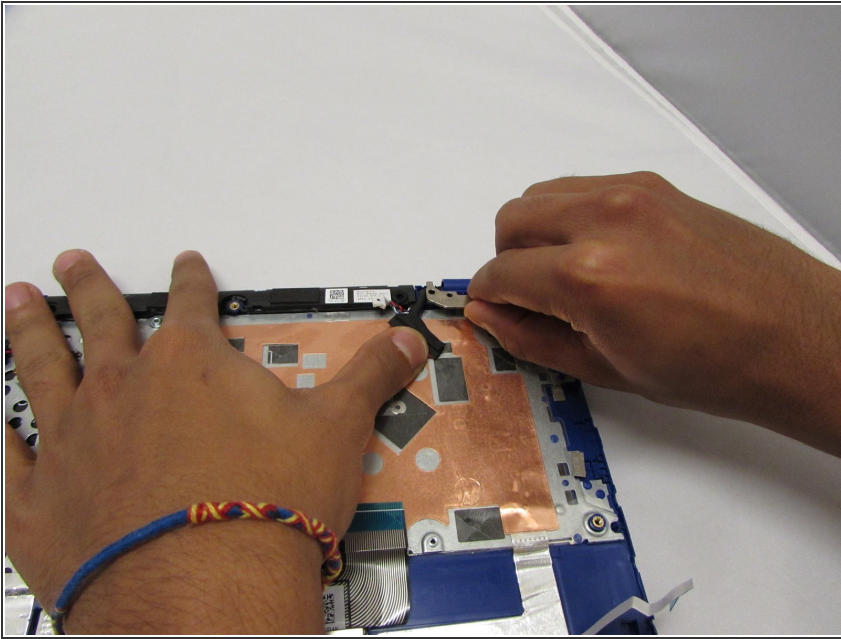
- Pull out the WiFi Chip.

Step 10 — LCD Screen



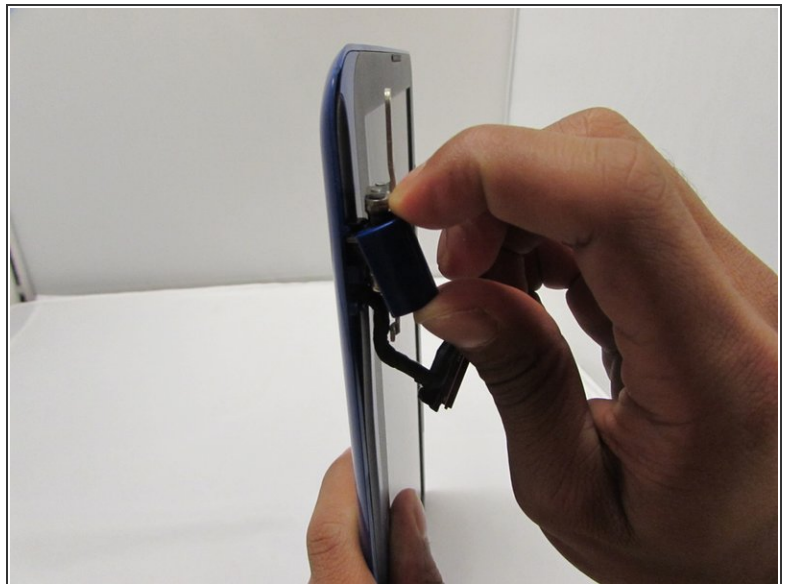
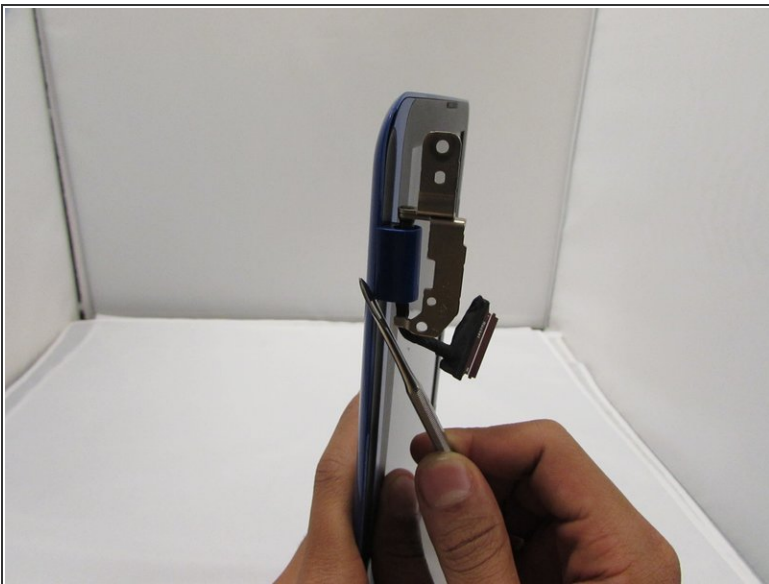
- Remove the two screws that hold down the LCD hinges.

Step 11



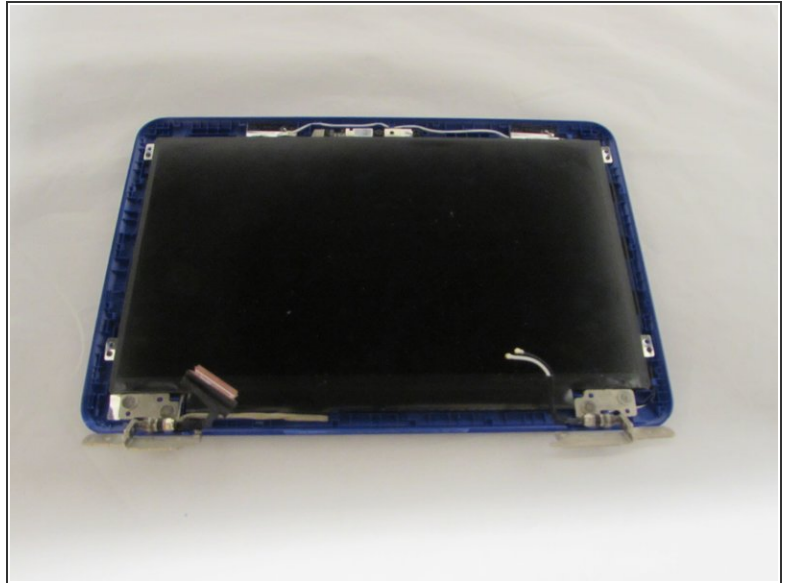
- Pull the hinges back and remove the screen.

Step 12



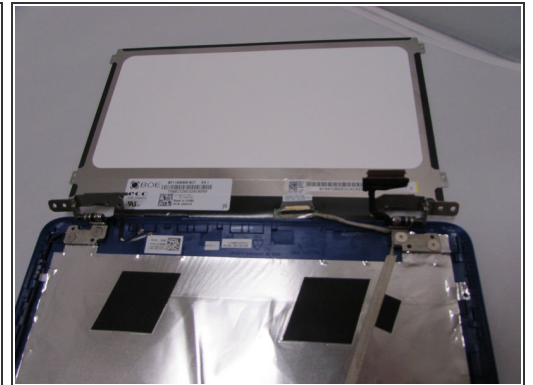
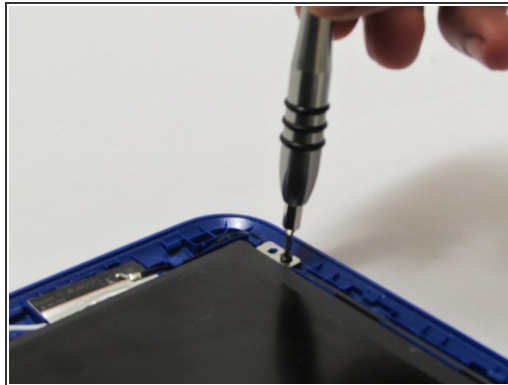
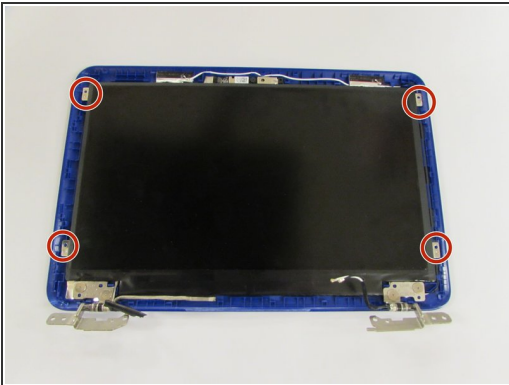
- Remove the hinge covers with your spudger tool.

Step 13



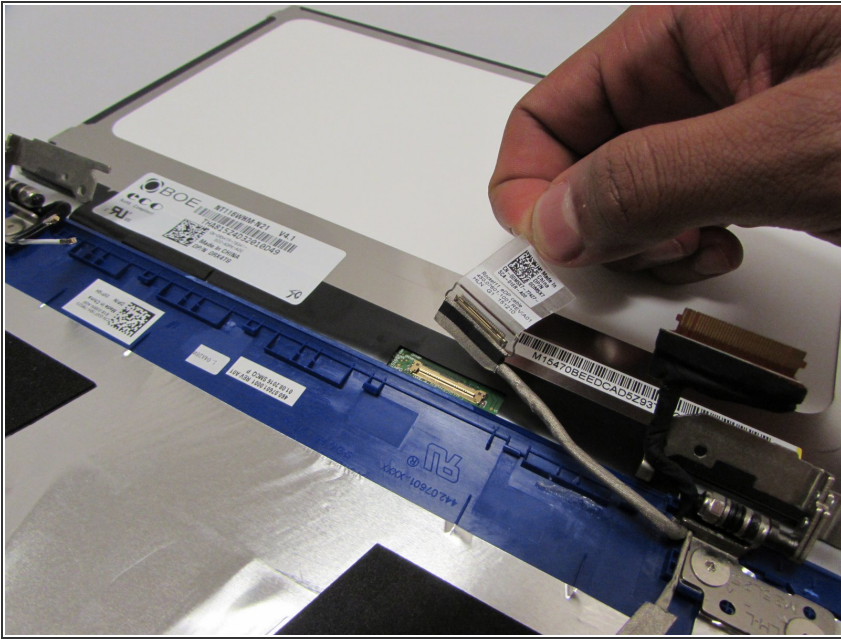
- Carefully remove the LCD Bezel with your regular black nylon spudger tool by bringing it all the way around the outer edges of your screen.

Step 14



- Remove the four screws with a PH00 sized bit.
- Flip the screen over.

Step 15



- Loosen the tape, and remove the LCD Cable.
- Remove the screen.

To reassemble your device, follow these instructions in reverse order.