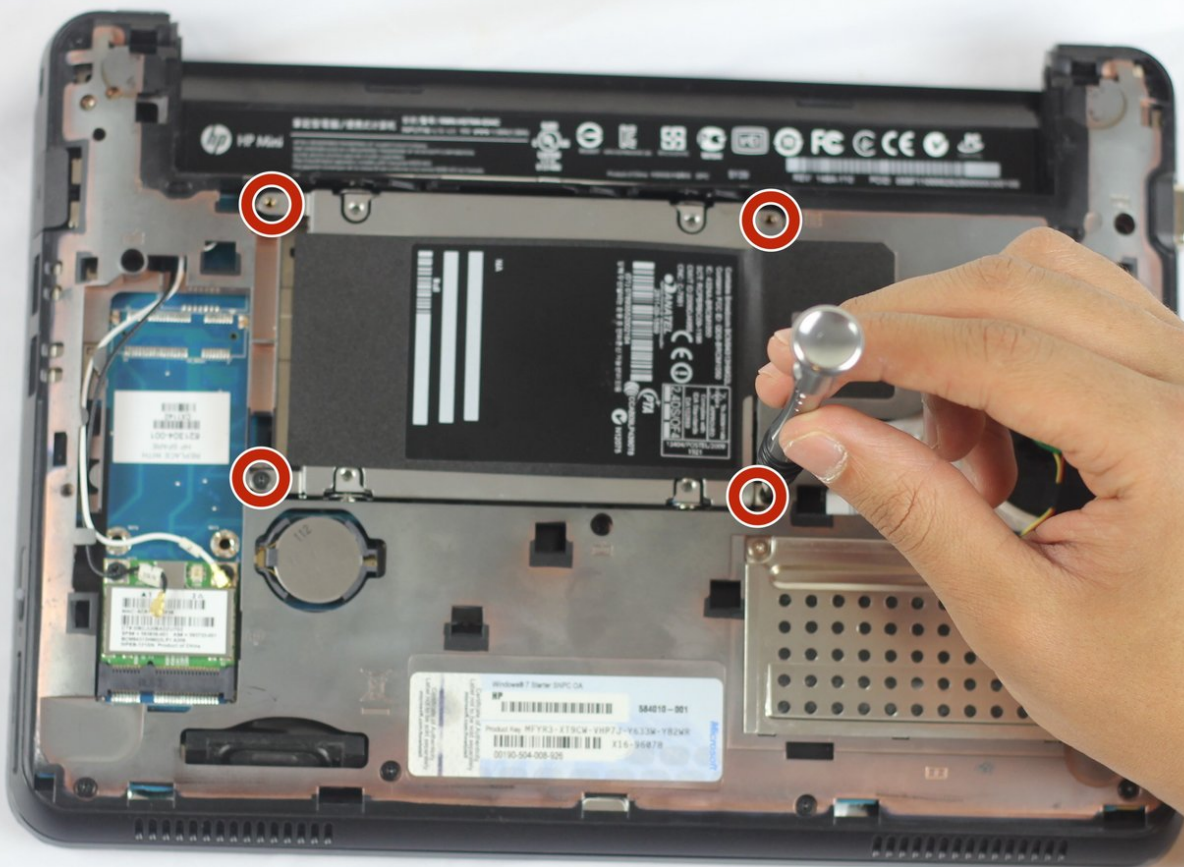




# HP Mini 110-3131dx Hard Drive Replacement

Replace your old corrupt hard drive with a new hard drive for your HP Mini 110-3131dx

Written By: aarondcollege





## TOOLS:

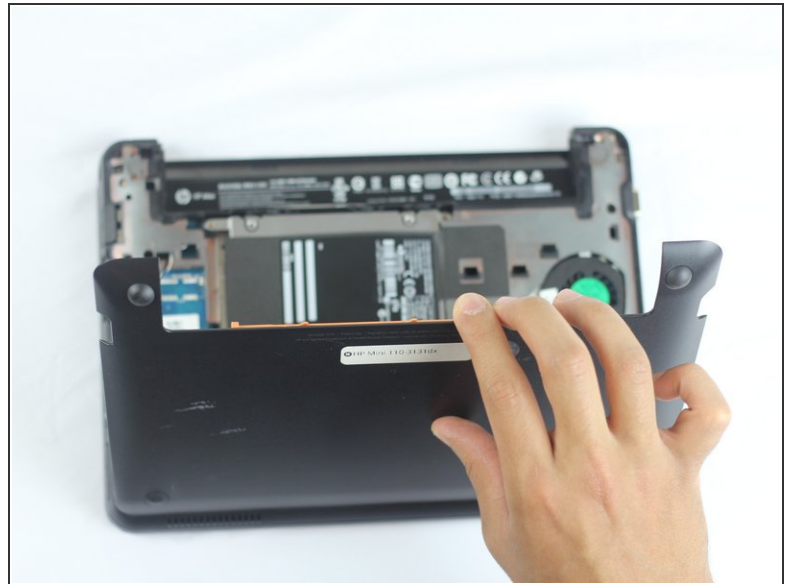
- [Phillips #1 Screwdriver](#) (1)
-

## Step 1 — Battery



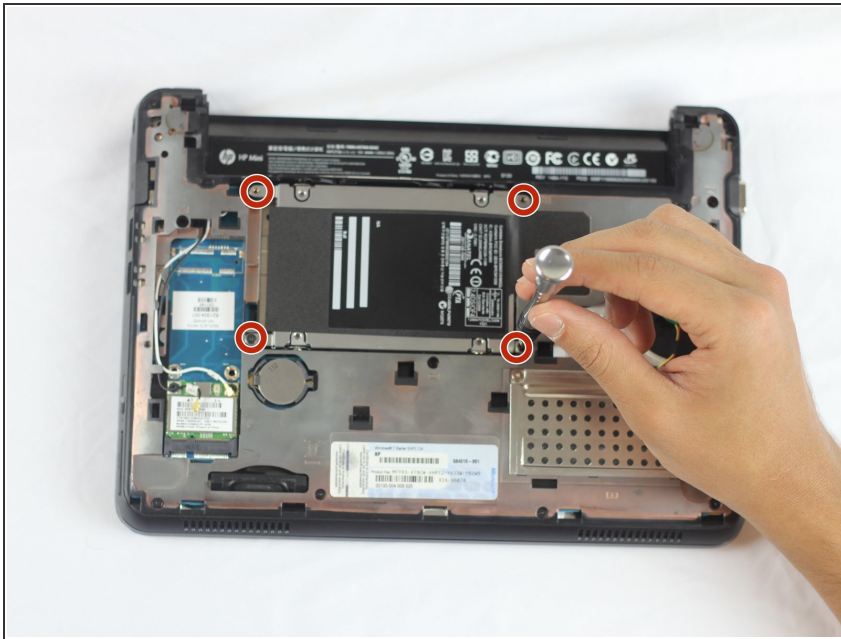
- Power off the laptop before trying to remove the battery.
- Turn the laptop upside down, and locate the sliding tabs on the battery.
- Slide both tabs in an inward direction, then slide the battery away from the laptop.

## Step 2 — Back Cover



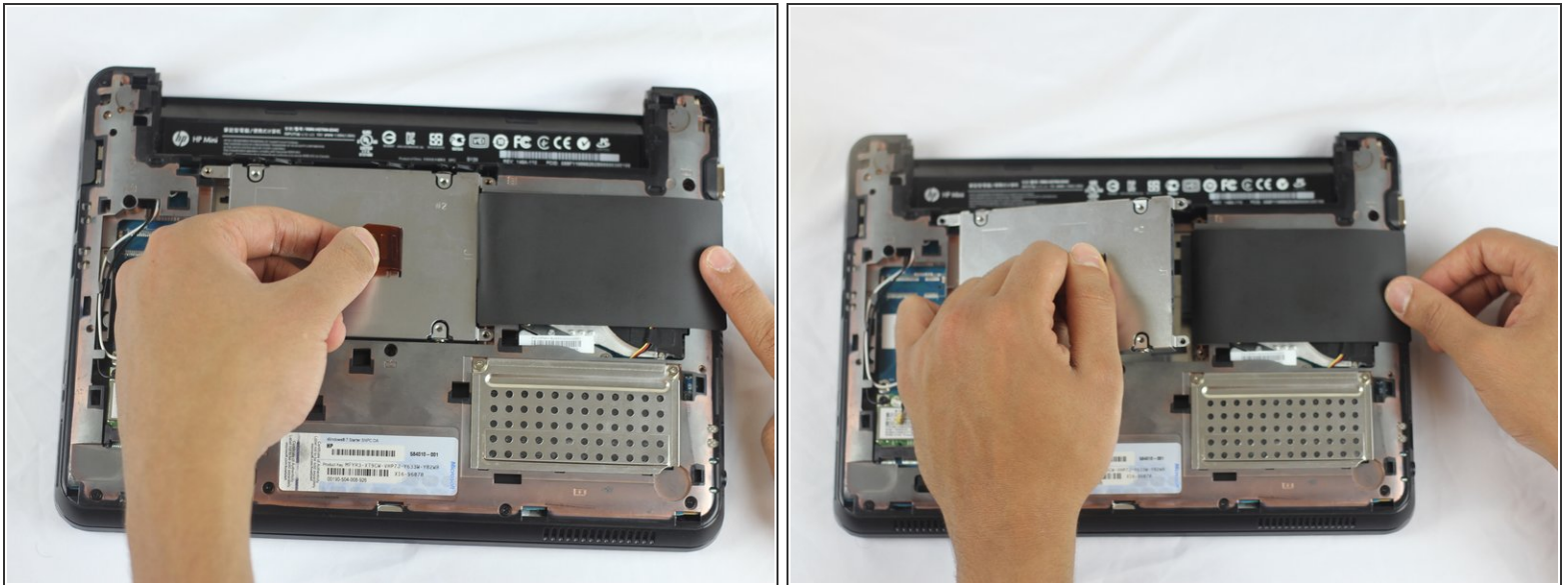
- To remove the bottom cover pull the orange tab to the right until it clicks.
- Carefully disconnect the clips as you lift the bottom cover.

## Step 3 — Hard Drive



- Remove the four screws holding down the hard drive using a Phillips #1 screwdriver.

## Step 4



- Lift the black flap covering the hard drive then slide it towards the left using the orange tab until it's released from its receptacle.
- Pull the hard drive out of the laptop.
- ❗ Put the hard drive in an anti-static bag to decrease the likelihood of harming it with static electricity.

To reinstall a new or old hard drive, follow these instructions in reverse order.