



D-link DI-524 Teardown

This D-link router was originally made in 2004 and featured a maximum range of 328 feet indoors at 2.4 GHz. Data transfer speeds were maximum 54 Mbps. Please note, the steps are reversible so if you are fixing your router, this guide is still usefull.

Written By: Imad Knight





TOOLS:

- [Essential Electronics Toolkit \(1\)](#)
-

Step 1 — Overview



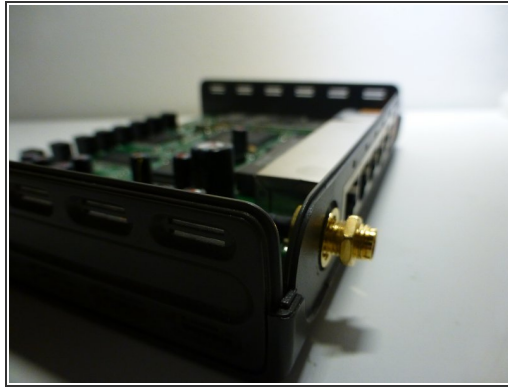
- This is the router, in all of its 12 year old glory.

Step 2 — Opening it up



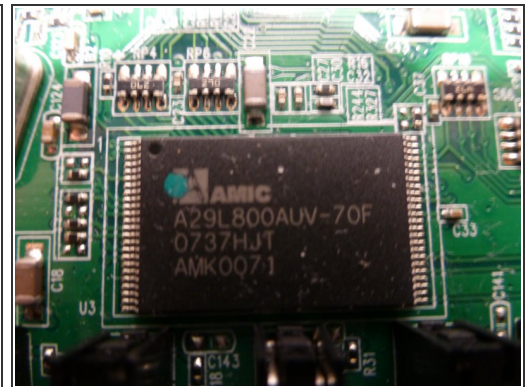
- First of, remove the antenna by simply unscrewing it.
- With that done, flip the router over and remove the 2 screws marked out in orange (pic 2).
- Then simply flip the router back over and lift up the top plastic.

Step 3 — Removing the board



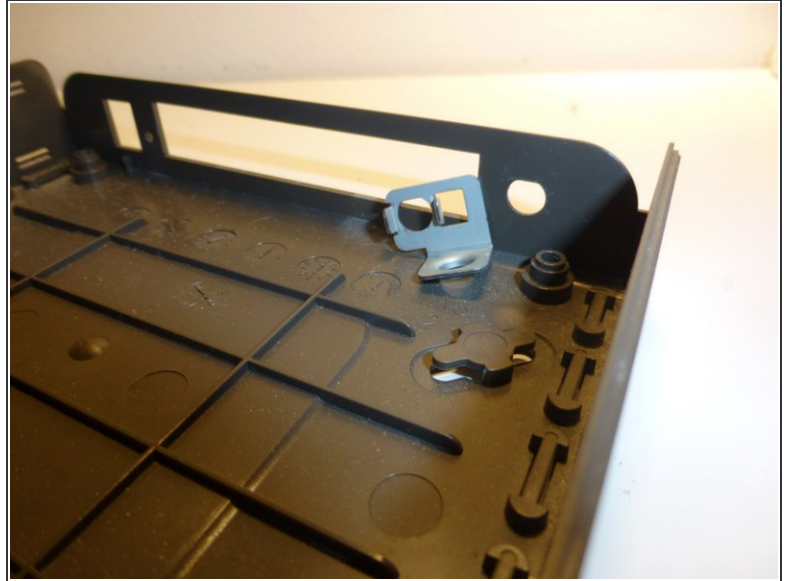
- With the plastic removed, we get a look at the board itself. Now remove the two other screws at the back (also marked out in orange).
- Before being able to lift the whole board out, you will also have to unscrew a nut where the antenna was attached to. This can easily be done with a pair of pliers.
- With that done, simply pull the connector out and lift the board 'up and out'.

Step 4 — The chips



- This is simply a better look at the board chips. If anyone reading this knows specifically what they are, feel free to comment and I will add the information.
- (There is also one more chip but iFixit allows only 3 pictures)

Step 5 — The lone metal clip



- The last piece of the router is this small metal clip here. Simply pull it up.

Step 6 — Thats it!



- You have successfully taken apart a D-link DI-524.
- I was unable to remove anything more from the mother board as it is all soldered on.