



Steelseries Rival 700 Gaming Mouse Sensor Assembly Replacement

The mouse is provided with a high performance PixArt PMW3360 optical sensor assembly that can be easily replaced with a Pixart 9800 Laser Sensor, depending on your needs.

Written By: Vincent Monteil



INTRODUCTION

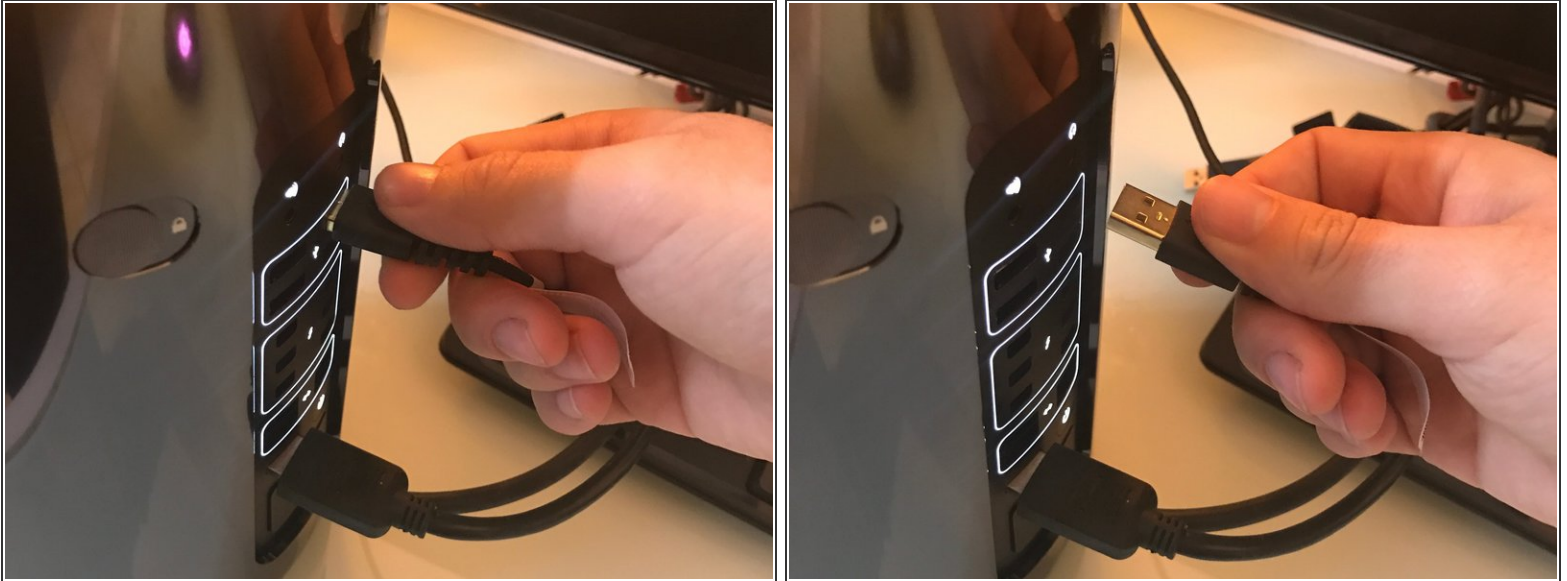
The mouse is provided with a high performance PixArt PMW3360 optical sensor assembly that can be easily replaced with a Pixart 9800 Laser Sensor, depending on your needs.



PARTS:

- [Steelseries Rival 700 Nameplate](#) (1)
 - [Steelseries Rival 700 Top Cover](#) (1)
 - [Steelseries Pixart 9800 Laser Sensor](#) (1)
-

Step 1 — Disconnect the mouse from your computer



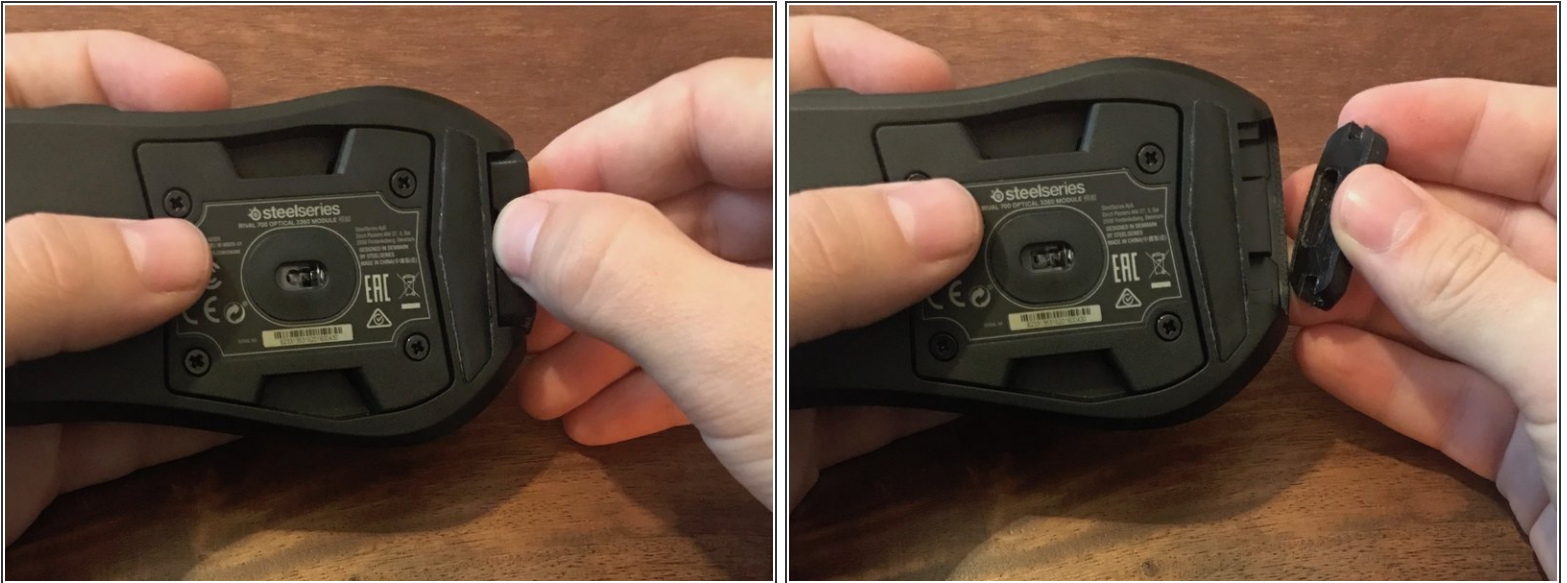
- To avoid electronically damaging either your computer or your mouse, unplug the usb cable from its socket.

Step 2 — Disconnect the cable from the mouse



- The Rival 700 mouse is a non wireless mouse. The micro-USB cable end is an elbow socket, secured by a plastic clip.
- To **disconnect** the cable from the mouse, firmly press the plastic clip using your thumb

Step 3 — Nameplate removal



- The original nameplate is a soft rubber one that can be removed just by pulling it softly out of its socket.
- **WARNING:** When reassembling, if you're using a custom nameplate that may not be as stretchable as the original one, insert it softly, and use a lime tool on the new part to avoid damaging the mouse socket.

Step 4 — Nameplate printing



- You will be able to download the 3D files to design a custom nameplate on the Steelseries website. The link is also provided in the part description.
- On this picture, the original "RIVAL" nameplate will be replaced with a new one on which i just had my Twitch ID printed.
- Be creative, use colored plastic, put logos and drawings on your mouse.

Step 5 — Top cover removal



- Use both your index and thumb to gently pry the top cover out from the mouse.
- This part is a thin plastic one which needs a certain amount of strength to be removed. Be careful not to break it.

Step 6 — Top cover replacement



- Steelseries sells a set of two different covers to replace the original one, with a sweat-resistant one f.e.
- Check the parts section for the purchase link.
- On the left, you can see on the wide led slot that is used to color the Steelseries logo on your mouse.

Step 7 — Sensor screws



- Use a Philips #0 screwdriver to remove the four screws that are keeping the mouse sensor assembly sealed.

Step 8 — Sensor removal



- Insert your thumb and index in the two mouse holes and gently pry the sensor assembly out from its socket.

To reassemble your device, follow these instructions in reverse order.