



Sony MV1 CamCorder Disassembly

This guide will show you how to disassemble...

Written By: Cafony



INTRODUCTION

This guide will show you how to disassemble your Sony CamCorder

Step 1 — Removing the back cover



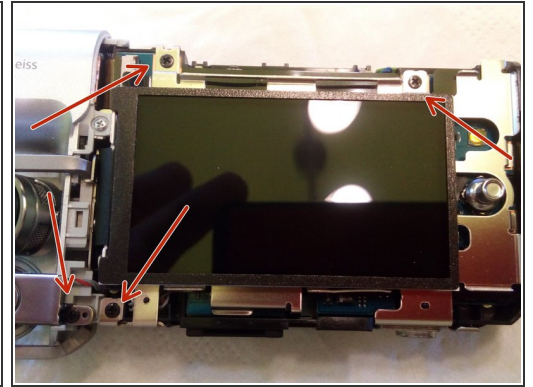
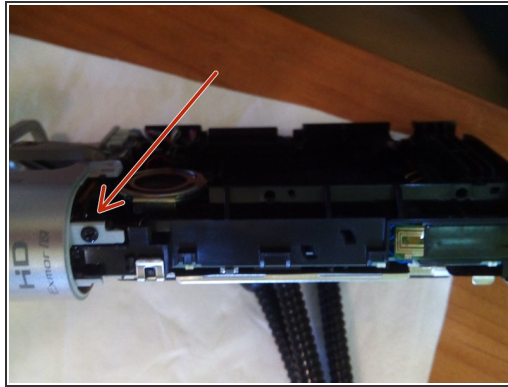
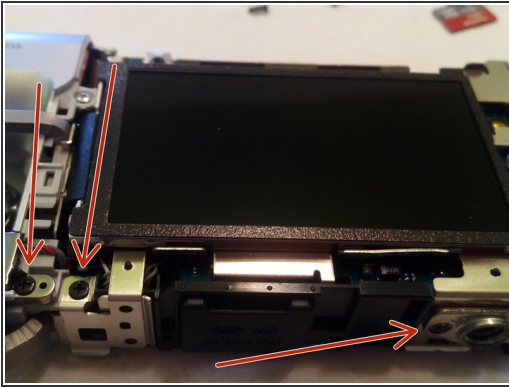
- Unscrew the two screws next to the battery compartment.
- Then the four on the bottom.
- Now you can pull off the back cover.

Step 2 — Removing the screen cover



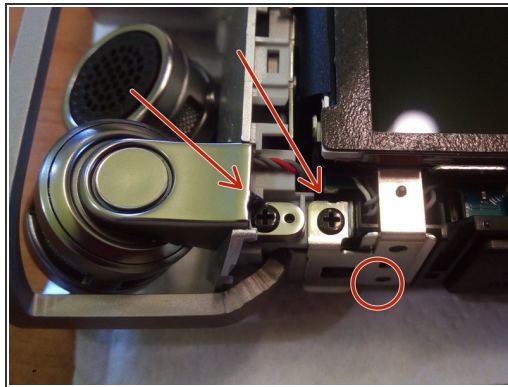
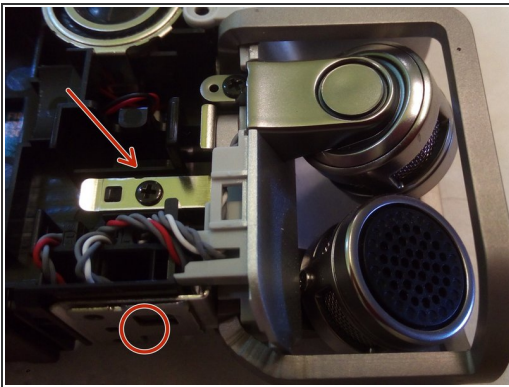
- Remove the two Phillips head screws on the side of the camera.
- Now loosen the bracket holding the camera.
- Now unscrew the two screws as seen in the third image.

Step 3 — Removing the metal screen support



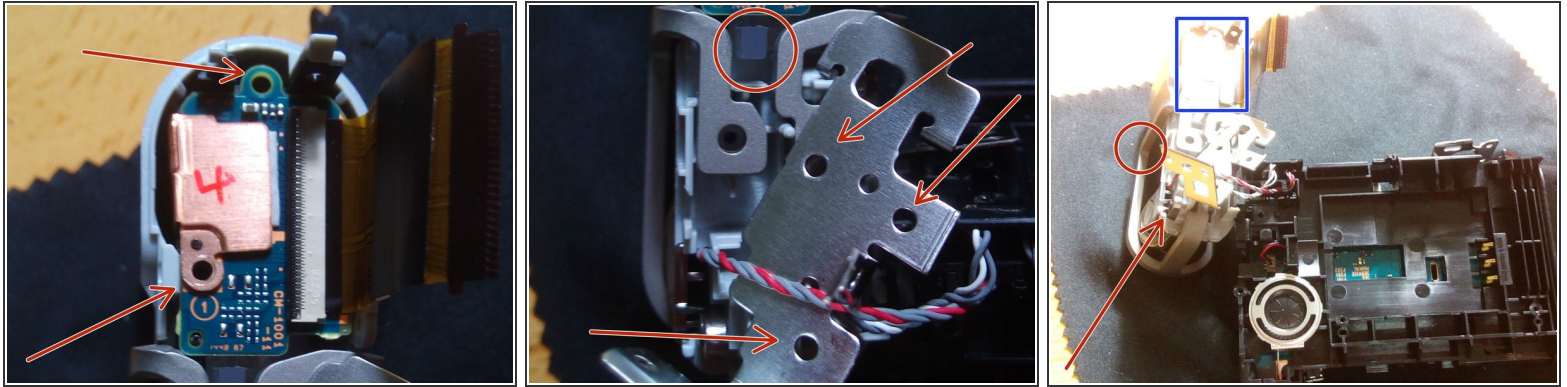
● Insert instructions here

Step 4 — Removing the microphone/lens support



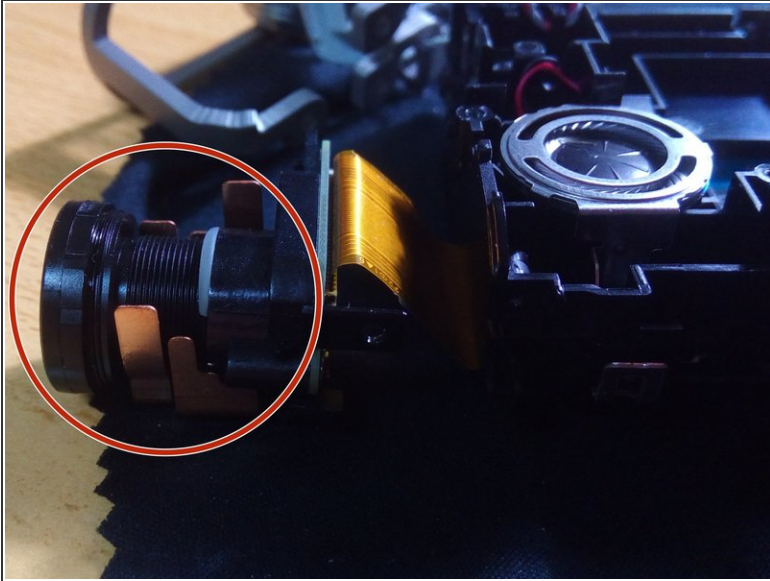
● Insert instructions here

Step 5 — Removing the lens



- 1 - Remove 2 screws from the lens board.
- 2 - On the second photo one "can't see" the screws, but remove 3 of them, then remove gently in the circle the recording plastic light.
- 3 - Remove the mic screw, so that you can remove the metal protection to free the lens board.

Step 6 — Focussing manually the lens



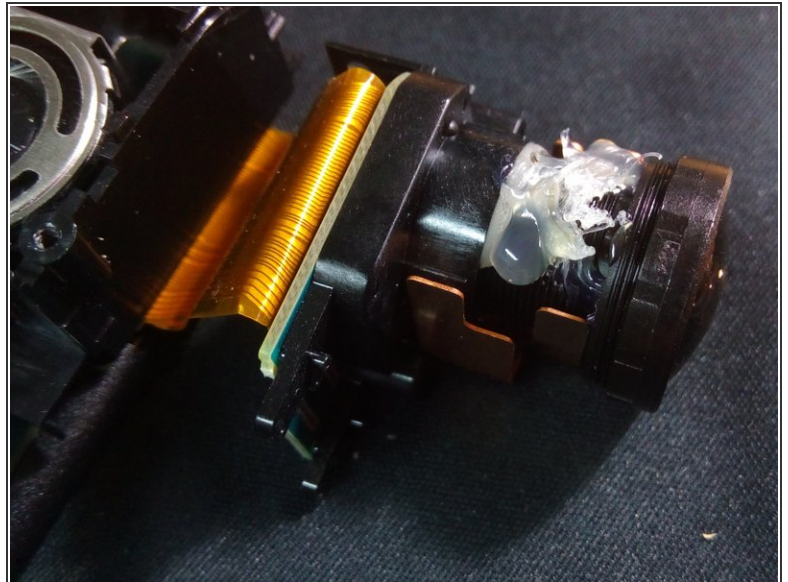
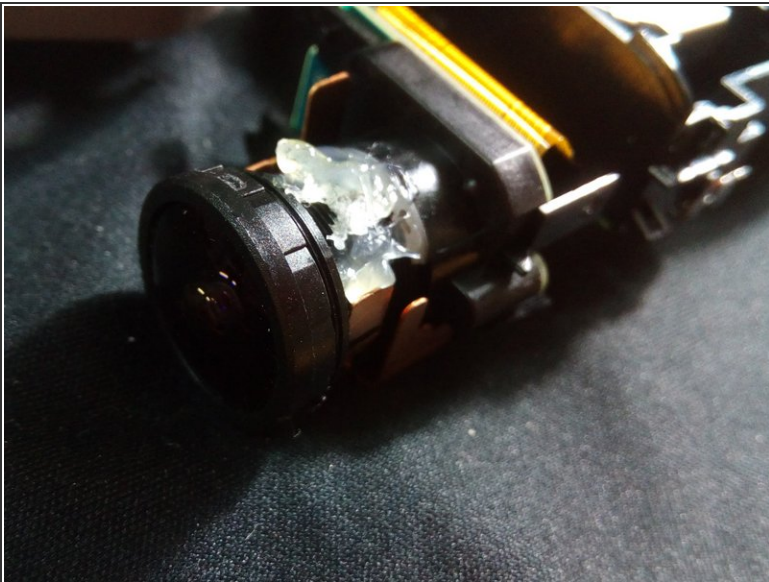
- 1 - The lens can be rotated manually until you can see it.
- 2 - With camera open insert battery, hold it by hand to make contact.
- 3 - Click the power button and start the camera.
- 4 - Look at the screen and with the other hand focus the lense.

Step 7 — Adding the battery and focussing manually



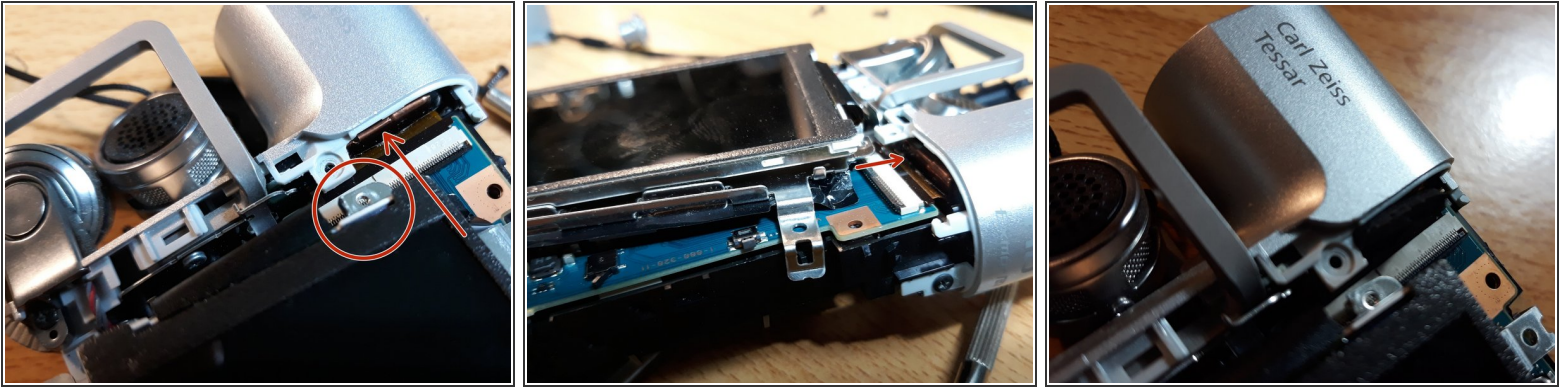
- Insert battery, hold power button. Check screen and focus lens manually. Enjoy!

Step 8 — Applying hot glue to the lens of Sony MV1



- After you tuned the "lens" you should get some hot glue on the lens, cause with time it will get out of place. I had to open my camera two times for this reason.

Step 9 — "Black Screen" on Sony MV-1



- Over time, the lens recedes from its original position.
- It will start having contact with the small metal base where the screw is.
- With a metal file, remove the metal base of the screw a little.
- Before assembling the camera, put the battery in and try to turn it on!
- Check if the display is working.

To reassemble your device, follow these instructions in reverse order.