



Shark Rocket HV301 Rotary Brush Replacement

This guide will teach you how to remove and replace the rotary brush on the Shark Rocket HV301.

Written By: Jonathan Baruch



INTRODUCTION

This guide will teach you how to remove and replace the rotary brush on the Shark Rocket HV301. There are a few reasons you may need to replace the rotary brush on your vacuum. For instance, the bristles may wear over time or the bearing caps on the ends of the brush may seize up, preventing the brush from spinning properly.

This is a simple repair that can be done by anyone and can improve the capabilities and lifespan of your vacuum. It can be done with common tools almost everyone should have easy access to. However, links are provided throughout in the case that you do not have one of the necessary tools. A link to the owner's manual can be found found [here](#).



TOOLS:

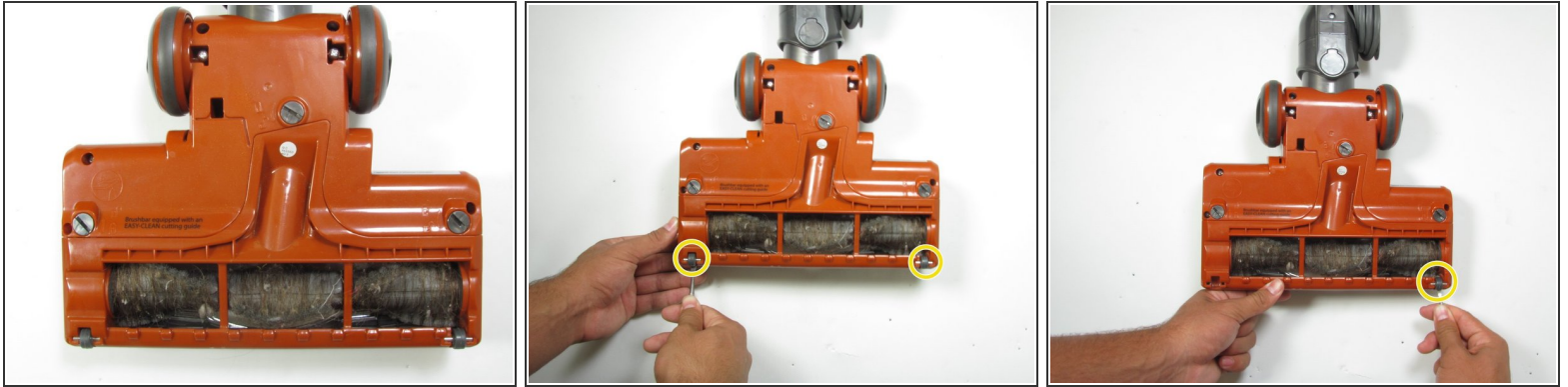
- [iFixit Opening Tool](#) (1)
- [Phillips #2 Screwdriver](#) (1)
- [Spudger](#) (1)



PARTS:

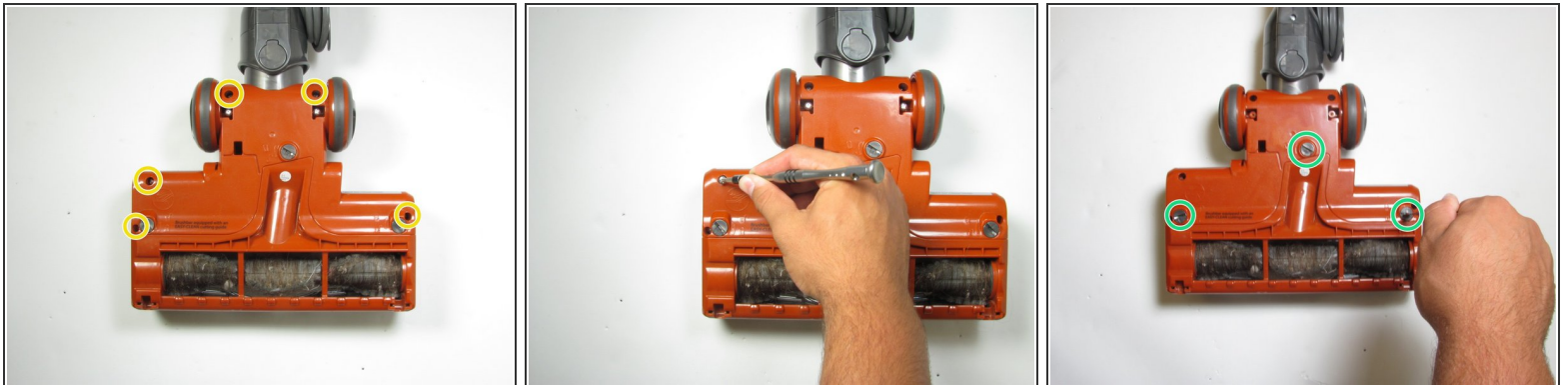
- [Shark Rocket HV301 Rotary Brush](#) (1)

Step 1 — Rotary Brush



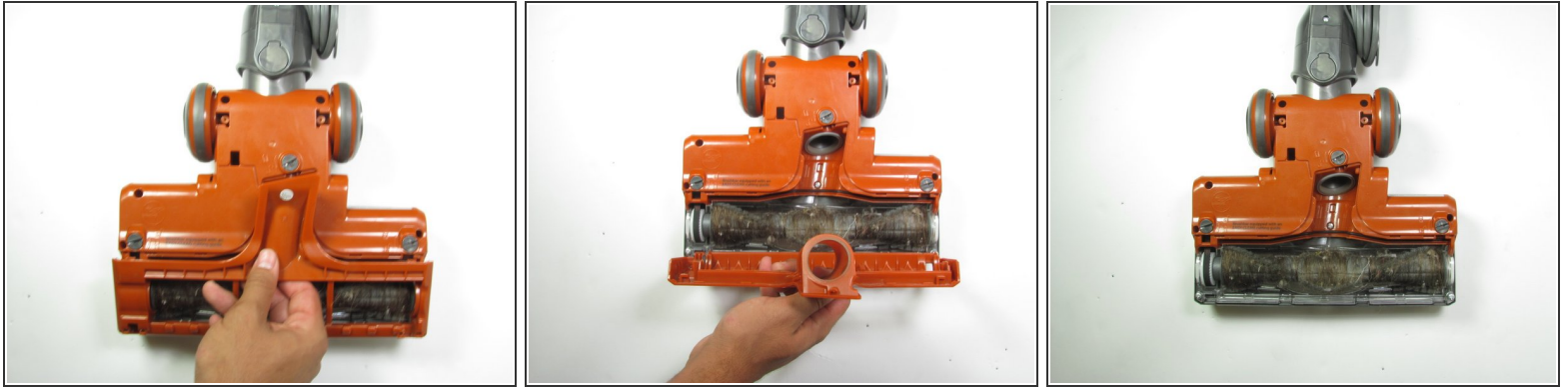
- Flip the vacuum so the bottom base is visible.
- Gently pry the bottom two wheels off with a plastic opening tool.

Step 2



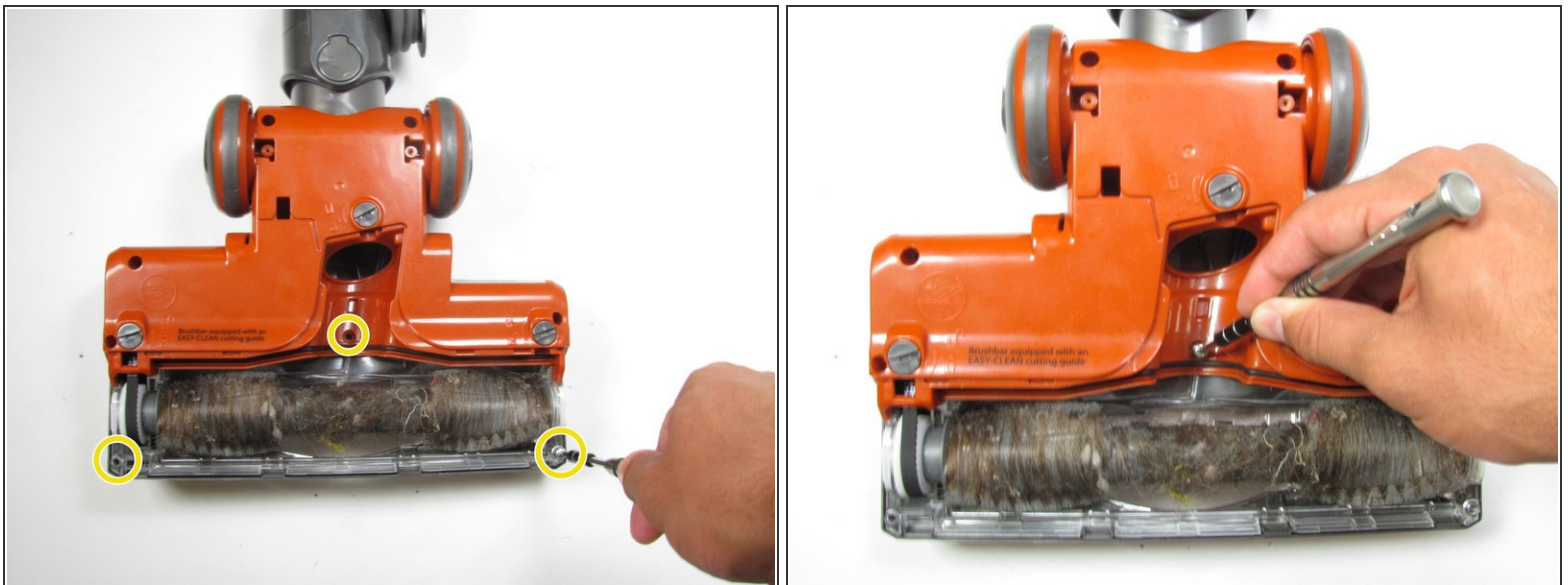
- Remove five visible screws with a Phillips #2 screwdriver.
- Locate and twist the three plastic screws to the unlock position with a quarter or flathead screwdriver.

Step 3



- Remove plate covering the roller brush.

Step 4



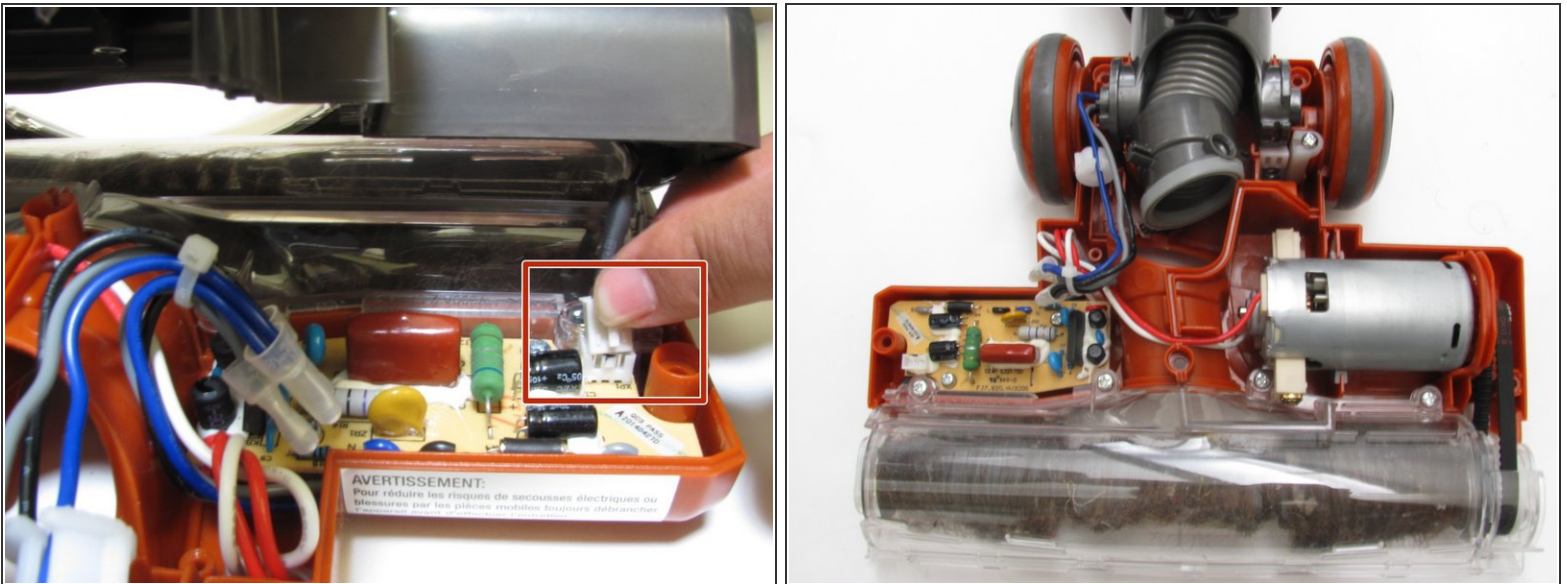
- Use a Phillips #2 screwdriver to extract the three screws revealed from removing the plate.

Step 5



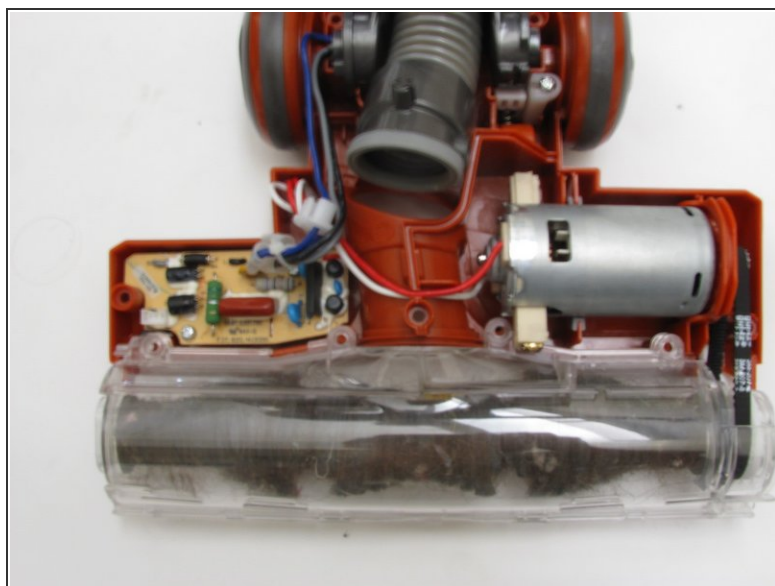
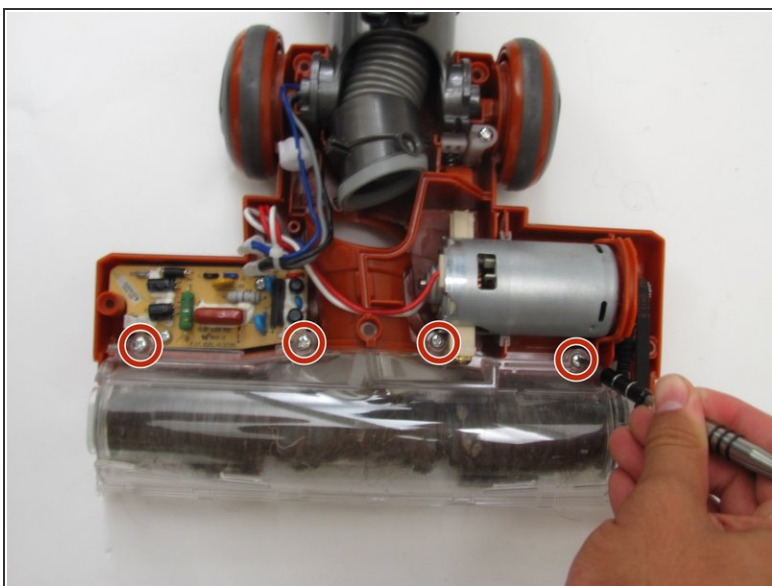
- Turn the vacuum over so the rotary brush is on the ground.
- Grab the vacuum on both sides of the hose and pull up to remove the top of the vacuum halfway.

Step 6



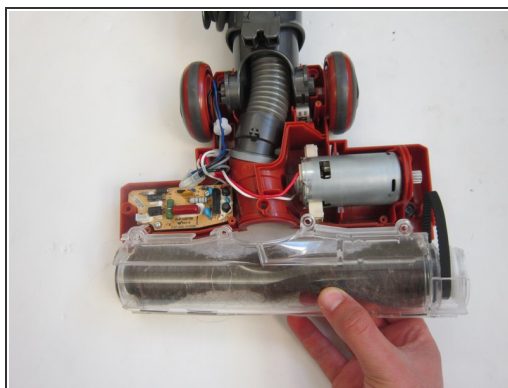
- Gently pinch the head of the cable and pull upwards until the casing disconnects from the vacuum.
- Proceed with removing the upper casing.

Step 7



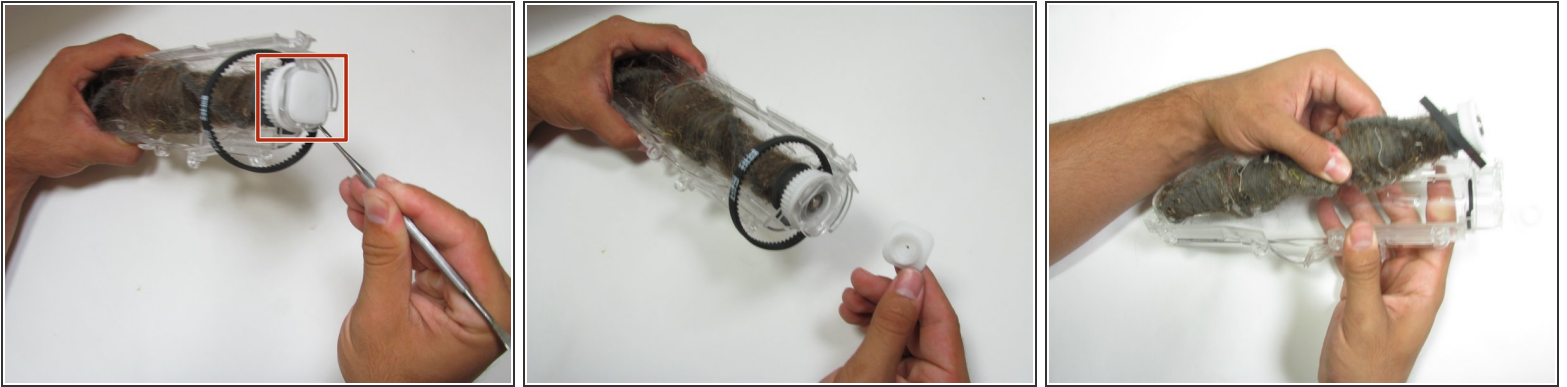
- Use a Phillips #2 screwdriver to remove the four visible screws securing the rotary brush to the vacuum.

Step 8



- Remove the rotary belt on right side of vacuum from the bearing.
- Gently lift the casing to remove the belt and brush from the vacuum.

Step 9



- Gently pry off the plastic casing on both sides of rotary brush.
- Lift the clear plastic shell from the rotary brush.

Step 10



- Remove the rotary belt attached to the brush and replace it if needed.

To reassemble your device, follow these instructions in reverse order.